

PRODUCT INFORMATION PACKET

Model No: G131513.00

Catalog No: G131513.00

Obsolete in the US,

132433.00 - .3HP..3515RPM.182TC.TEFC.208-230/460V.3PH.60HZ.CONTINUOUS.40C.1.15SF.C FACE.C182T34FC



Regal and are trademarks of Regal Rexnord Corporation or one of its affiliated companies.

©2022 Regal Rexnord Corporation, All Rights Reserved. MC017097E

Nameplate Specifications

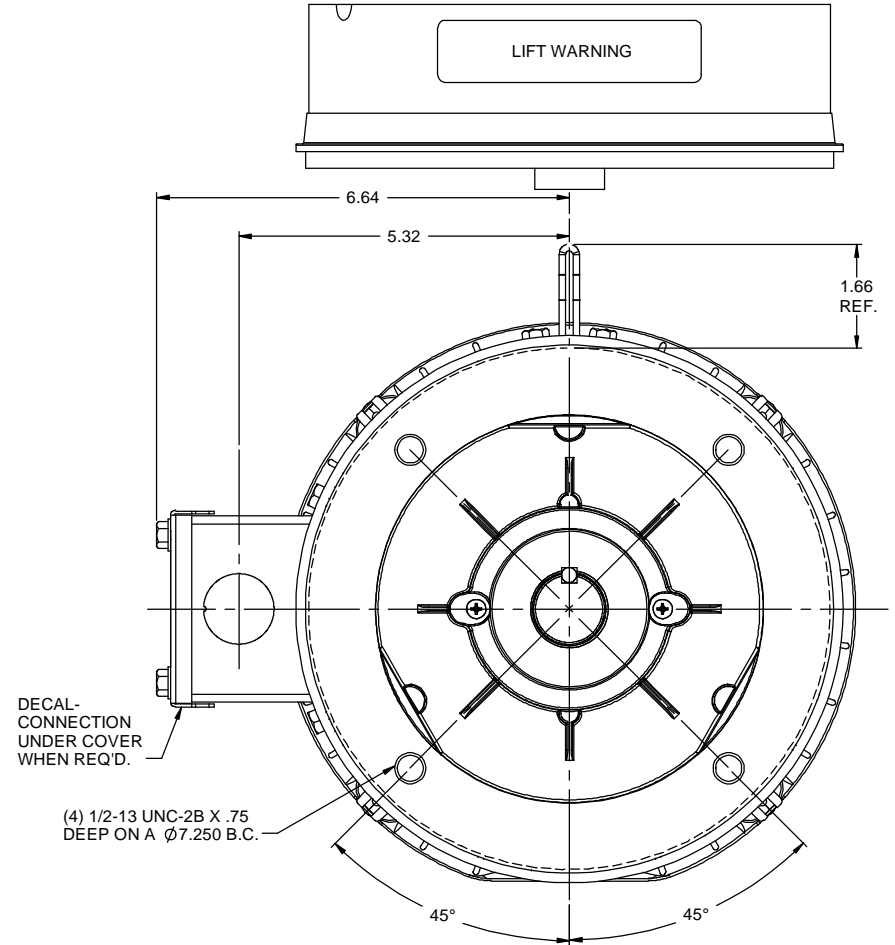
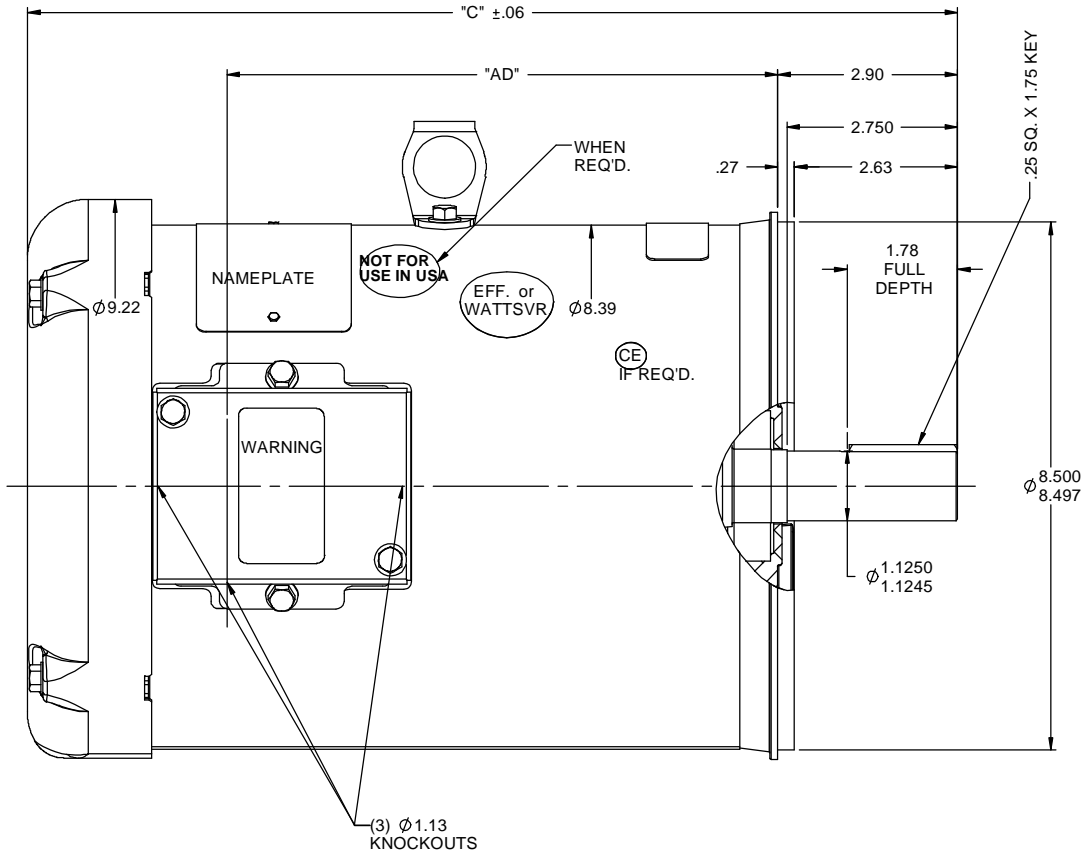
| | | | |
|------------------------|---------------|----------------------------|-----------------------------|
| Output HP | 3 Hp | Output KW | 2.2 kW |
| Frequency | 60 Hz | Voltage | 230/460 V |
| Current | 7.6/3.8 A | Speed | 3515 rpm |
| Service Factor | 1.15 | Phase | 3 |
| Efficiency | 85.5 % | Power Factor | 87 |
| Duty | Continuous | Insulation Class | F |
| Design Code | B | KVA Code | K |
| Frame | 182TC | Enclosure | Totally Enclosed Fan Cooled |
| Thermal Protection | No Protection | Ambient Temperature | 40 °C |
| Drive End Bearing Size | 6206 | Opp Drive End Bearing Size | 6205 |
| UL | Recognized | CSA | Y |
| CE | Y | IP Code | 43 |
| Number of Speeds | 1 | | |

Technical Specifications

| | | | |
|-----------------------|-----------------------------|-----------------------|-----------------|
| Electrical Type | Squirrel Cage Induction Run | Starting Method | Across The Line |
| Poles | 2 | Rotation | Reversible |
| Resistance Main | 3.72 Ohms | Mounting | Round |
| Drive End Bearing | Ball | Opp Drive End Bearing | Ball |
| Frame Material | Rolled Steel | Shaft Type | T |
| Assembly/Box Mounting | VERIFY | | |
| Connection Drawing | 005010.01 | Outline Drawing | 035518-850 |


This is an uncontrolled document once printed or downloaded and is subject to change without notice. Date Created:07/18/2022

RBC PROPRIETARY AND CONFIDENTIAL INFORMATION
This document is the property of REGAL BELOIT CORPORATION ("RBC") including its subsidiaries and divisions and contains proprietary information of RBC. This document is loaned on the express condition that neither it nor the information contained therein shall be disclosed to others without the express written consent of RBC, and that the information shall be used by the recipient only as approved expressly by RBC. This document shall be returned to RBC upon its request. This document may be subject to certain restrictions under U.S. export control laws and regulations.



GASKETS THROUGHOUT
MAXIMUM FACE RUNOUT TO BE .004 T.I.R.
MAXIMUM PILOT ECCENTRICITY TO BE .004 T.I.R.
PERMISSIBLE SHAFT RUNOUT TO BE .002 T.I.R.

| DASH NO. | "C" | "AD" |
|----------|-------|-------|
| 750 | 12.97 | 6.88 |
| 800 | 13.47 | 7.38 |
| 850 | 13.97 | 7.88 |
| 900 | 14.47 | 8.38 |
| 950 | 14.97 | 8.88 |
| 1000 | 15.47 | 9.38 |
| 1050 | 15.97 | 9.88 |
| 1100 | 16.47 | 10.38 |
| 1150 | 16.97 | 10.88 |

| | | | | | | |
|-----------------------------------|----------|-----------|-----|--------------------------------|---|-------------------|
| | | | | TOLERANCES UNLESS SPECIFIED |  REGAL-BELOIT CORPORATION | DRAWN RDW 4/18/07 |
| | | | | DEC INCHES | | CHK |
| | | | | X ±.1 | TITLE OUTLINE - 180TC FRAME TEFC - "C" FACE MATL GENERAL PURPOSE | APPR SW 4/18/07 |
| | | | | XX ±.03 | | SCALE 1:2 |
| | | | | XXX ±.005 | | REF 035452 |
| - UPDATED & REDRAWN IN SOLIDWORKS | | | | XXXX ±.0005 | FINISH | FMF |
| NO | REVISION | BY & DATE | CHK | ANG ±1/2° | | PAGE OF |
| THIRD ANGLE PROJECTION | | | RF | PREV | SIZE B | DRAWING NO 035518 |
| | | | | NETWORK FILE NAME | | REV - |

005010-01

VIEW FROM OUTSIDE OF MOTOR AT SWITCH END.



| | | | | | | | | | | | |
|--|-----------------------|--------------|-----|--------------------------------|----------|---|--|------|-------------|--------------|----------|
| | | | | TOLERANCES UNLESS SPECIFIED | |  Regal Beloit America, Inc. | | | DRAWN | RDW 04/12/02 | |
| | | | | DEC. | INCHES | | | | CHK | | |
| | | | | .X | ±.1 | | | | APPD | | |
| | | | | .XX | ±.01 | | | | SCALE | 1=1 | |
| | | | | .XXX | ±.005 | TITLE | EXTERNAL WIRING DIAGRAM 3 PHASE W/O PROTECTOR | | | REF | FIG.2-51 |
| A | UPDATED TO REGAL LOGO | SAJ 06/26/15 | AJY | .XXXX | ±.0005 | MAT'L. | DECAL - 004014 | | | FMF | |
| NO. | REVISION | BY & DATE | CHK | ANG | ±1/2" | FINISH | | | | PREV | |
| THIS DRAWING IN DESIGN AND DETAIL IS OUR PROPERTY AND MUST NOT BE USED EXCEPT IN CONNECTION WITH OUR WORK ALL RIGHTS OF DESIGN AND INVENTION ARE RESERVED THIS IS AN ELECTRONICALLY GENERATED DOCUMENT - DO NOT SCALE THIS PRINT | | | | RFP | 04/12/02 | CAD FILE | 00501001 | SIZE | DRAWING NO. | | REV |
| | | | | DIST BRF-NLV | | | | A | 005010-01 | | A |