

# PRODUCT INFORMATION PACKET



Model No: G131510.00

Catalog No: G131510.00

Obsolete in the US,

132561.00 - ..7 1/2HP..3505RPM.184TC.TEFC.230/460V.3PH.60HZ.CONTINUOUS.40C.1.0SF.C FACE.C184T34FC2

Regal and Leeson are trademarks of Regal Rexnord Corporation or one of its affiliated companies.

©2023 Regal Rexnord Corporation, All Rights Reserved. MC017097E





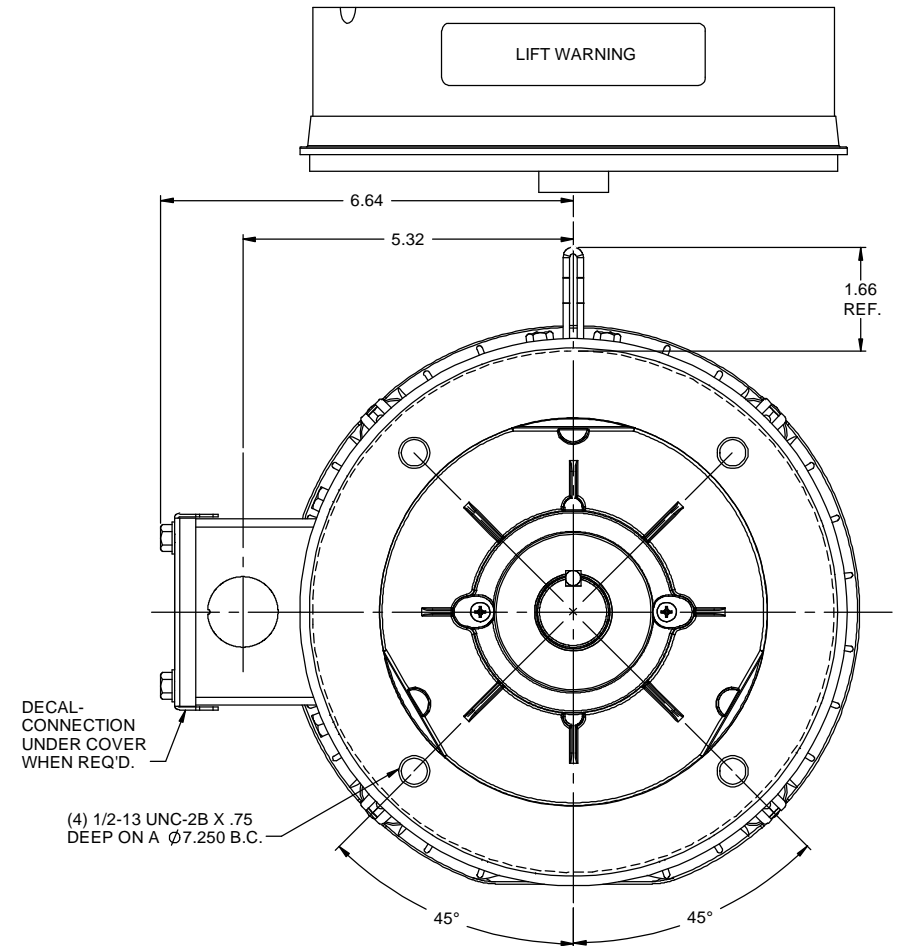
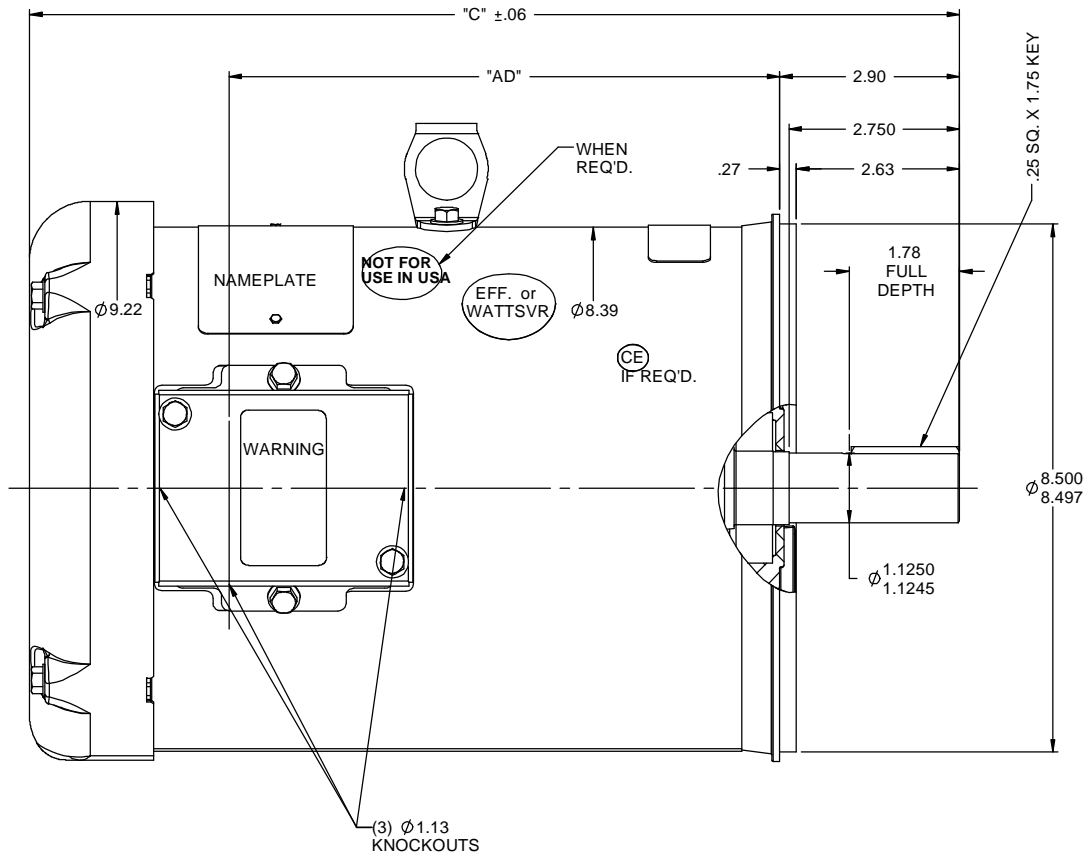
## Nameplate Specifications

Output HP	7.50 Hp	Output KW	5.6 kW
Frequency	60 Hz	Voltage	230/460 V
Current	16.8/8.4 A	Speed	3505 rpm
Service Factor	1	Phase	3
Efficiency	88.5 %	Power Factor	94.5
Duty	Continuous	Insulation Class	F
Design Code	B	KVA Code	J
Frame	184TC	Enclosure	Totally Enclosed Fan Cooled
Thermal Protection	No Protection	Ambient Temperature	40 °C
Drive End Bearing Size	6206	Opp Drive End Bearing Size	6205
UL	Recognized	CSA	Y
CE	Y	IP Code	43
Number of Speeds	1		

## Technical Specifications



Electrical Type	Squirrel Cage Induction Run	Starting Method	Across The Line
Poles	2	Rotation	Reversible
Resistance Main	.27 Ohms	Mounting	Round
Drive End Bearing	Ball	Opp Drive End Bearing	Ball
Frame Material	Rolled Steel	Shaft Type	T
Assembly/Box Mounting	VERIFY		
Outline Drawing	035518-1050	Connection Drawing	005010.01

This is an uncontrolled document once printed or downloaded and is subject to change without notice. Date Created:03/30/2023



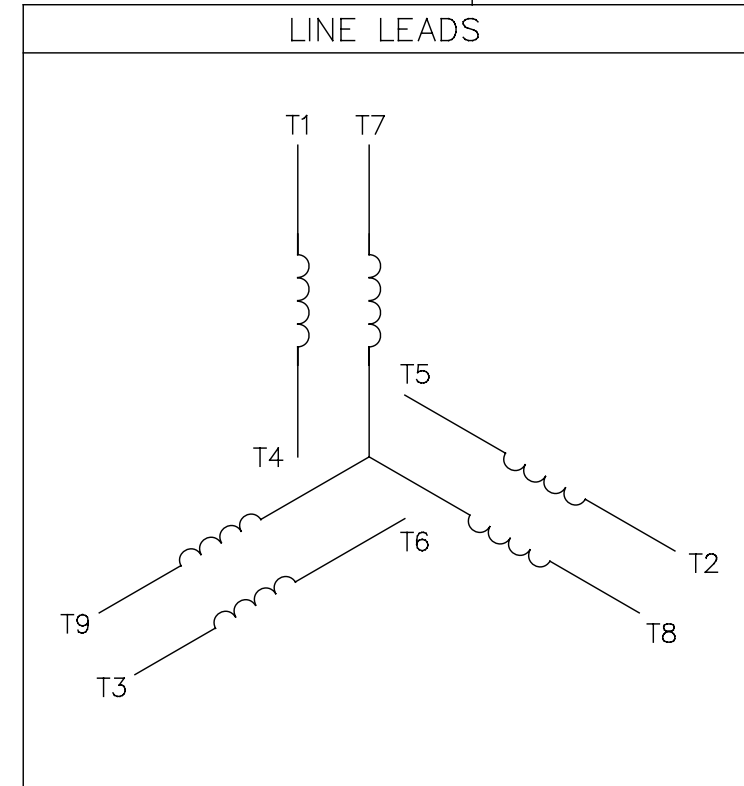
GASKETS THROUGHOUT  
MAXIMUM FACE RUNOUT TO BE .004 T.I.R.  
MAXIMUM PILOT ECCENTRICITY TO BE .004 T.I.R.  
PERMISSIBLE SHAFT RUNOUT TO BE .002 T.I.R.

DASH NO.	"C"	"AD"
750	12.97	6.88
800	13.47	7.38
850	13.97	7.88
900	14.47	8.38
950	14.97	8.88
1000	15.47	9.38
1050	15.97	9.88
1100	16.47	10.38
1150	16.97	10.88


					TOLERANCES UNLESS SPECIFIED	 <b>REGAL-BELOIT CORPORATION</b>	DRAWN RDW 4/18/07				
				DEC	INCHES		CHK				
				X	±.1		APPR SW 4/18/07				
				XX	±.03		SCALE 1:2				
				XXX	±.005		REF 035452				
-	UPDATED & REDRAWN IN SOLIDWORKS		LST 12/17/2009	XXXX	±.0005		MATL GENERAL PURPOSE				
NO	REVISION		BY DATE	CHK	ANG	±1/2°		FINISH	PAGE OF		
<div>THIRD ANGLE PROJECTION</div> 			RFP		PREV				SIZE	DRAWING NO	REV
			NETWORK FILE NAME						B	035518	

005010-01

VIEW FROM OUTSIDE OF MOTOR AT SWITCH END.



VOLTAGE	L1	L2	L3	JOIN & INSULATE
HIGH	T1	T2	T3	(T4,T7) (T5,T8) (T6,T9)
LOW	T1,T7	T2,T8	T3,T9	T4,T5,T6

				TOLERANCES UNLESS SPECIFIED		 <b>Regal Beloit America, Inc.</b>	DRAWN RDW 04/12/02	
				DEC.	INCHES		CHK	
				.X	±.1		APPD	
				.XX	±.01		SCALE 1=1	
				.XXX	±.005		REF FIG.2-51	
A	UPDATED TO REGAL LOGO	SAJ 06/26/15	AJY	.XXXX	±.0005	TITLE	EXTERNAL WIRING DIAGRAM 3 PHASE W/O PROTECTOR	
NO.	REVISION	BY & DATE	CHK	ANG	±1/2"	FINISH	PREV	
				RFP	04/12/02	CAD FILE	00501001	SIZE
				DIST	BRF-NLV			DRAWING NO.
THIS DRAWING IN DESIGN AND DETAIL IS OUR PROPERTY AND MUST NOT BE USED EXCEPT IN CONNECTION WITH OUR WORK ALL RIGHTS OF DESIGN AND INVENTION ARE RESERVED THIS IS AN ELECTRONICALLY GENERATED DOCUMENT - DO NOT SCALE THIS PRINT								1=1
								FIG.2-51
								FMF
								REF
								APPD
								CHK
								DRAWN
								RDW
								04/12/02
								005010-01
								A
								A

## EC Declaration of Conformity

The undersigned representing  
the manufacturer:

Regal Beloit America  
100 East Randolph St.  
Wausau, WI 54401

and the authorized representative  
established within the Community:

Marathon Electric UK  
6F Thistleton Road Ind. Estate  
Market Overton  
Oakham, Rutland LE15 7PP UK

are committed to providing customers with products that comply with applicable regulations and international protocols to which they are subject, including the requirements of the European Parliament Directive on the Harmonization of the laws relating to electrical equipment designed for use within certain voltage limits (2014/35/EU).

Regal Beloit America declares that the following product(s), to which this declaration relates, are in conformity with the relevant sections of the EC standards listed below.

This statement supersedes any statements previously issued pertaining to the product(s) listed below and is subject to change without notice.

Model No : G131510.00

(Model No. may contain prefix and/or suffix characters)

Catalog No : G131510.00

Rework No : N/A

Directives :

Low Voltage Directive 2014/35/EU

Harmonized Standards Used :

EN 60034-1: 2010 (IEC 60034-1: 2010)

EN 60034-5: 2001/A1:2007 (IEC 60034-5: 2000/A1:2006)

Authorized Representative:



Michael A. Logsdon  
Vice President, Technology

Authorized Representative in the Community:



Julian Clark  
Marketing Engineer

Created on 09/01/2022

**CE 22**