

PRODUCT INFORMATION PACKET

Model No: G131171.00

Catalog No: G131171.00

SOLETE - REPLACED BY 132201.00 - 5HP..1750RPM.184.TEFC./V.3PH.60HZ.CONT.NOT.40C.1.15SF.RIGID C.WA:
HGUARD.C184T17WK5E

Regal and are trademarks of Regal Rexnord Corporation or one of its affiliated companies.
©2022 Regal Rexnord Corporation, All Rights Reserved. MC017097E



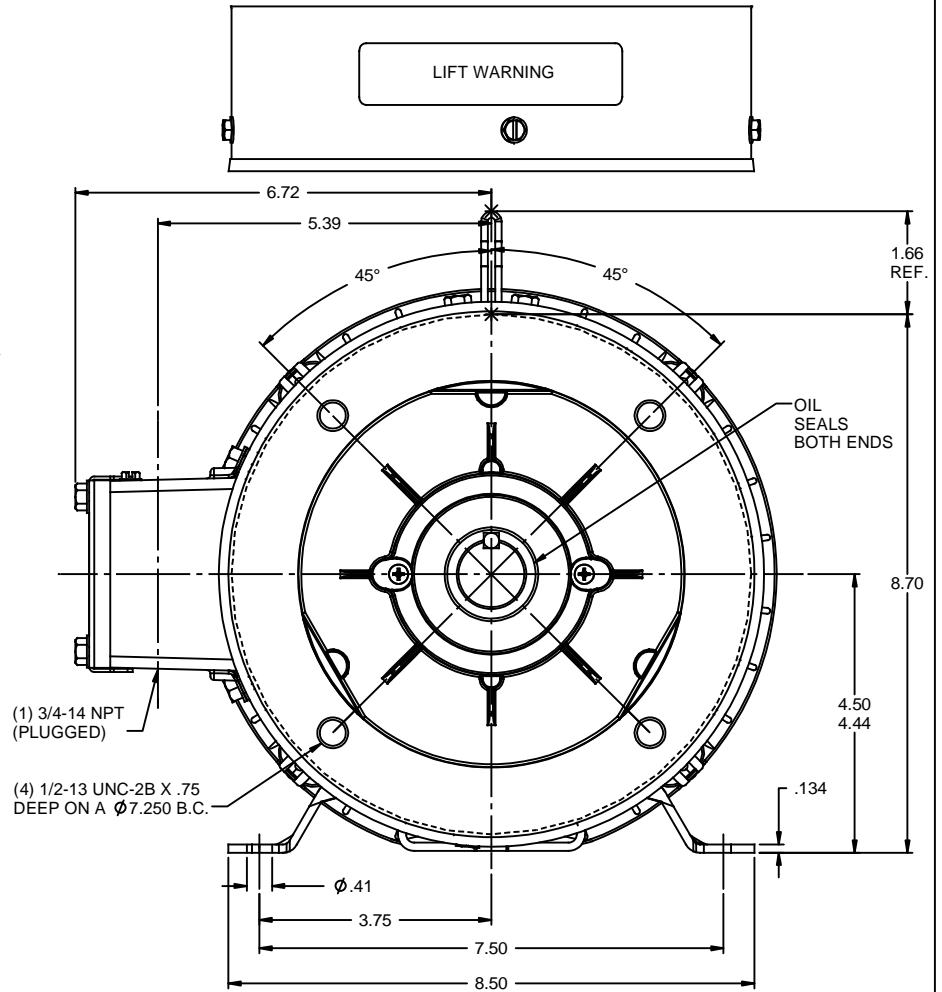
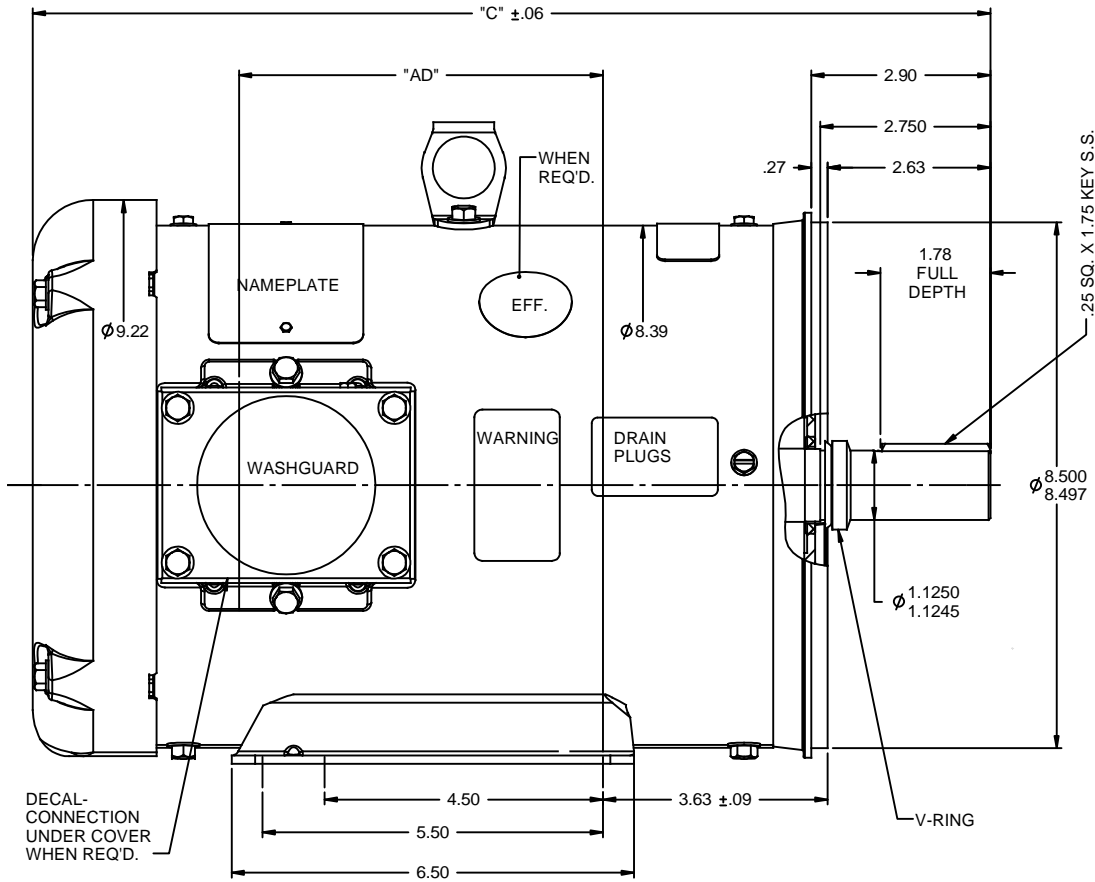
Nameplate Specifications

Output HP	5 Hp	Output KW	3.7 kW
Frequency	60 Hz	Voltage	208-230/460 V
Current	14.0-13.0/6.5 A	Speed	1750 rpm
Service Factor	1.15	Phase	3
Efficiency	87.5 %	Power Factor	82
Duty	Continuous	Insulation Class	F
Design Code	B	KVA Code	J
Frame	184TC	Enclosure	Totally Enclosed Fan Cooled
Thermal Protection	No Protection	Ambient Temperature	40 °C
Drive End Bearing Size	6207	Opp Drive End Bearing Size	6205
UL	Recognized	CSA	Y
CE	Y	IP Code	55
Number of Speeds	1		

Technical Specifications

Electrical Type	Squirrel Cage Induction Run	Starting Method	Across The Line
Poles	4	Rotation	Reversible
Resistance Main	3.08 Ohms	Mounting	Rigid C base
Motor Orientation	Nan	Drive End Bearing	Ball
Opp Drive End Bearing	Ball	Frame Material	Rolled Steel
Shaft Type	T	Assembly/Box Mounting	NAN
Connection Drawing	005010.01	Outline Drawing	035462-900



This is an uncontrolled document once printed or downloaded and is subject to change without notice. Date Created:07/18/2022



SPECIAL FEATURES:
SHAFT SEALS & V-RING
DRAIN HOLES IN FRAME & CONDUIT BOX
STAINLESS STEEL SHAFT, HARDWARE & NAMEPLATE
GASKETS THROUGHOUT

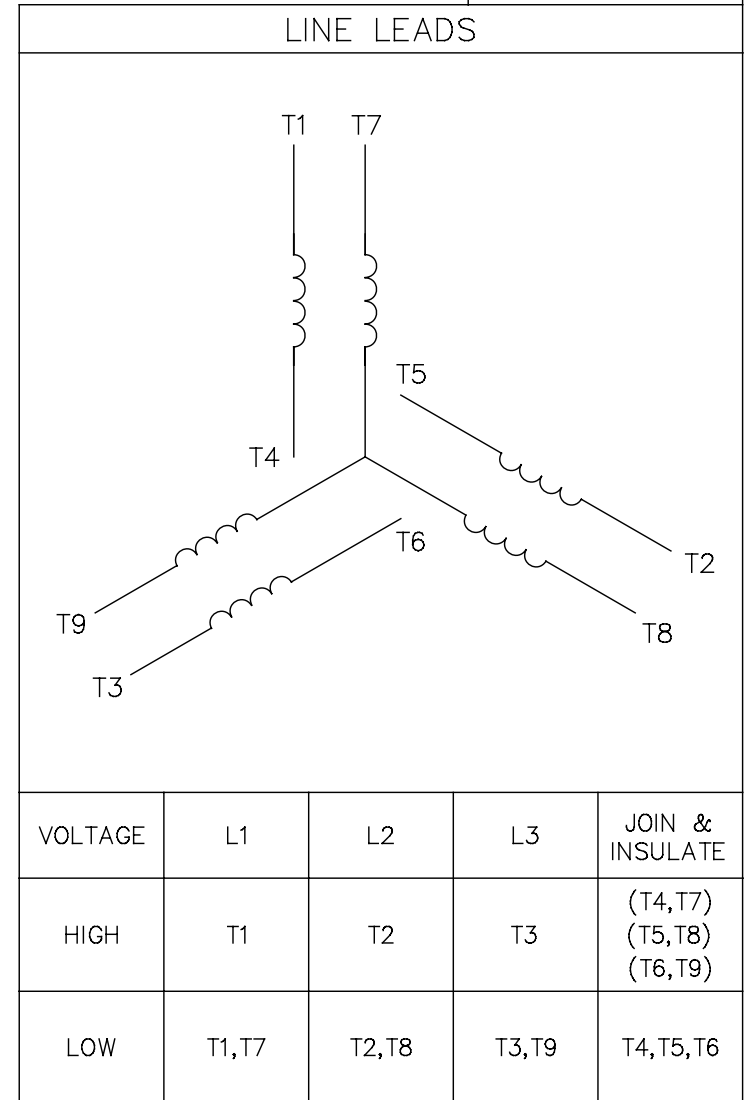
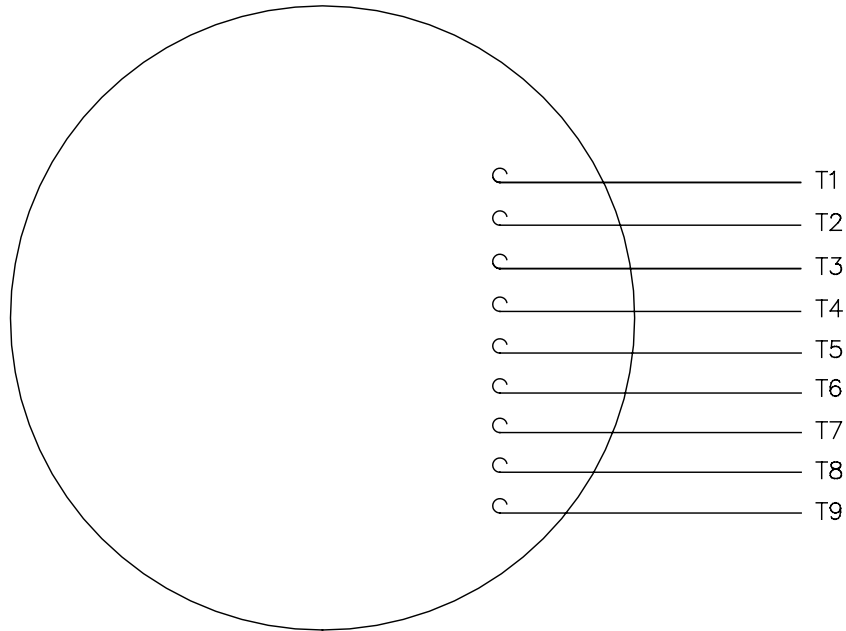
MAXIMUM FACE RUNOUT TO BE .004 T.I.R.
MAXIMUM PILOT ECCENTRICITY TO BE .004 T.I.R.
PERMISSIBLE SHAFT RUNOUT TO BE .002 T.I.R.


DASH NO.	"C"	"AD"
900	14.47	4.87
950	14.97	5.37
1000	15.47	5.87
1050	15.97	6.37
1100	16.47	6.87
1150	16.97	7.37

					TOLERANCES UNLESS SPECIFIED			DRAWN RDW 2/19/03			
					DEC	INCHES		CHK			
					X	$\pm .1$		APPR	SW 2/19/03		
04	UPDATED PER ISAAC 11-0758		LST 2/17/2011	XX	XX	$\pm .03$	TITLE OUTLINE - 180TC FRAME		SCALE 1:2		
03	UPDATED PER ISAAC 10-0580		LST 5/12/2010	XX	XXX	$\pm .005$	TEFC - RIGID "C"		REF		
-	UPDATED & REDRAWN IN SOLIDWORKS		LST 11/17/2008	XX	XXXX	$\pm .0005$	MATL WASHGUARD		FMF		
NO	REVISION		BY & DATE	CHK	ANG	$\pm 1/2^\circ$	FINISH		PAGE OF		
THIRD ANGLE PROJECTION						RFP	PREV		SIZE B	DRAWING NO 035462	REV 04
				NETWORK FILE NAME		035462					

005010-01

VIEW FROM OUTSIDE OF MOTOR AT SWITCH END.



				TOLERANCES UNLESS SPECIFIED		 Regal Beloit America, Inc.			DRAWN RDW 04/12/02					
				DEC.	INCHES				CHK					
				.X	±.1				APPD					
				.XX	±.01				SCALE 1=1					
				.XXX	±.005	TITLE EXTERNAL WIRING DIAGRAM 3 PHASE W/O PROTECTOR			REF FIG.2-51					
A	UPDATED TO REGAL LOGO	SAJ 06/26/15	AJY	.XXXX	±.0005				MAT'L. DECAL - 004014			FMF		
NO.	REVISION	BY & DATE	CHK	ANG	±1/2"	FINISH			PREV					
THIS DRAWING IN DESIGN AND DETAIL IS OUR PROPERTY AND MUST NOT BE USED EXCEPT IN CONNECTION WITH OUR WORK ALL RIGHTS OF DESIGN AND INVENTION ARE RESERVED THIS IS AN ELECTRONICALLY GENERATED DOCUMENT - DO NOT SCALE THIS PRINT			RFP		04/12/02		CAD FILE		00501001		SIZE A	DRAWING NO. 005010-01		REV. A
			DIST		BRF-NLV									