

PRODUCT INFORMATION PACKET

Model No: G130328.00

Catalog No: G130328.00

OBSOLETE - REPLACED BY 131502.00,

5HP..1750RPM.184.TEFC./V.3PH.60HZ.CONT.NOT.40C.1.15SF.RIGID C.GENERAL PURPOSE.C184T17FK14E

Regal and are trademarks of Regal Rexnord Corporation or one of its affiliated companies.

©2022 Regal Rexnord Corporation, All Rights Reserved. MC017097E



Nameplate Specifications

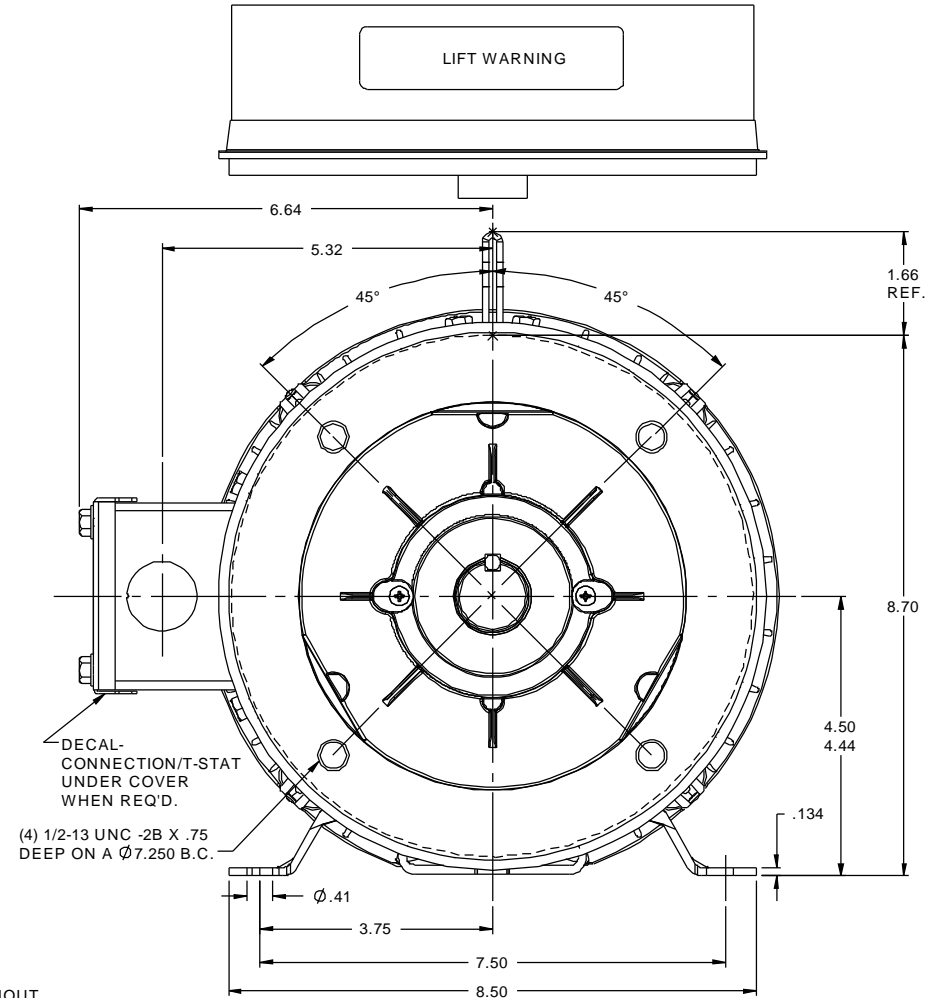
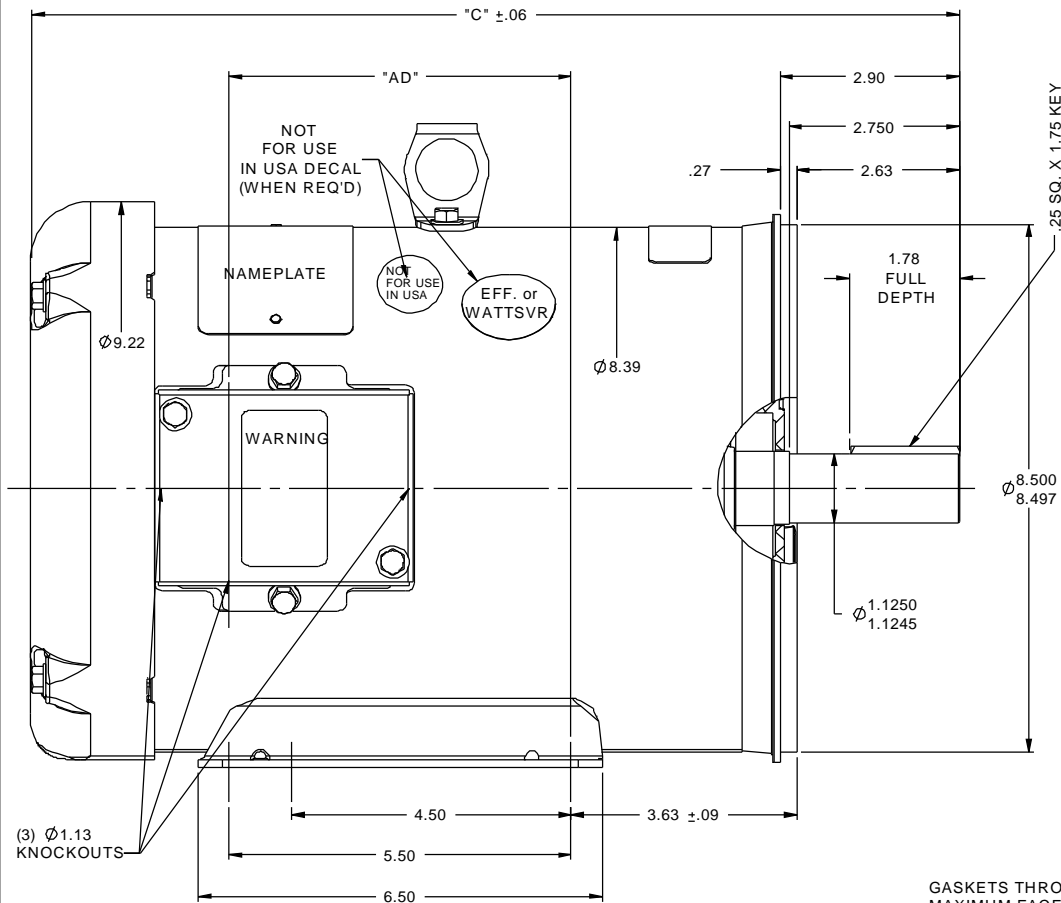
Output HP	5 Hp	Output KW	3.7 kW
Frequency	60 Hz	Voltage	208-230/460 V
Current	14.0-13.0/6.5 A	Speed	1750 rpm
Service Factor	1.15	Phase	3
Efficiency	87.5 %	Power Factor	82
Duty	Continuous	Insulation Class	F
Design Code	B	KVA Code	J
Frame	184TC	Enclosure	Totally Enclosed Fan Cooled
Thermal Protection	No Protection	Ambient Temperature	40 °C
Drive End Bearing Size	6206	Opp Drive End Bearing Size	6205
UL	Recognized	CSA	Y
CE	Y	IP Code	43
Number of Speeds	1		

Technical Specifications

Electrical Type	Squirrel Cage Induction Run	Starting Method	Across The Line
Poles	4	Rotation	Reversible
Resistance Main	3.08 Ohms	Mounting	Rigid C base
Motor Orientation	Nan	Drive End Bearing	Ball
Opp Drive End Bearing	Ball	Frame Material	Rolled Steel
Shaft Type	T	Assembly/Box Mounting	NAN
Outline Drawing	035453-850	Connection Drawing	005010.01



This is an uncontrolled document once printed or downloaded and is subject to change without notice. Date Created:07/18/2022

RBC PROPRIETARY AND CONFIDENTIAL INFORMATION
This document is the property of REGAL BELOIT CORPORATION ("RBC") including its subsidiaries and divisions and contains proprietary information of RBC. This document is loaned on the express condition that neither it nor the information contained therein shall be disclosed to others without the express written consent of RBC, and that the information shall be used by the recipient only as approved expressly by RBC. This document shall be returned to RBC upon its request. This document may be subject to certain restrictions under U.S. export control laws and regulations.



GASKETS THROUGHOUT
MAXIMUM FACE RUNOUT TO BE .004 T.I.R.
MAXIMUM PILOT ECCENTRICITY TO BE .004 T.I.R.
PERMISSIBLE SHAFT RUNOUT TO BE .002 T.I.R.

DASH NO.	"C"	"AD"
850	13.97	4.50
900	14.47	5.00
950	14.97	5.50
1000	15.47	6.00
1050	15.97	6.50
1100	16.47	7.00
1150	16.97	7.50

				TOLERANCES UNLESS SPECIFIED		 REGAL-BELOIT CORPORATION	DRAWN RDW 1/21/03	
				DEC	INCHES		CHK	
				X	$\pm .1$	TITLE OUTLINE - 180TC FRAME TEFC - RIGID "C"	APPR	SW 1/21/03
1	ADDED DECAL NOT FOR USE IN USA	GR 06/04/12	JD	XX	$\pm .03$		SCALE	1:2
-	UPDATED & REDRAWN IN SOLIDWORKS	LST 12/17/2009	XX	XXX	$\pm .005$		REF	035346
NO	REVISION	BY & DATE	CHK	ANG	$\pm 1/2^\circ$		FMF	
THIRD ANGLE PROJECTION 				RFP	ANG	FINISH	PAGE	OF
				PREV			SIZE	DRAWING NO
				NETWORK FILE NAME			B	035453
								REV
								1

005010-01

VIEW FROM OUTSIDE OF MOTOR AT SWITCH END.



				TOLERANCES UNLESS SPECIFIED		 Regal Beloit America, Inc.			DRAWN	RDW 04/12/02		
				DEC.	INCHES				CHK			
				.X	±.1				APPD			
				.XX	±.01				SCALE	1=1		
				.XXX	±.005	TITLE	EXTERNAL WIRING DIAGRAM 3 PHASE W/O PROTECTOR			REF	FIG.2-51	
A	UPDATED TO REGAL LOGO		SAJ 06/26/15	AJY	.XXXX	±.0005	MAT'L. DECAL - 004014			FMF		
NO.	REVISION		BY & DATE	CHK	ANG	±1/2"	FINISH			PREV		
THIS DRAWING IN DESIGN AND DETAIL IS OUR PROPERTY AND MUST NOT BE USED EXCEPT IN CONNECTION WITH OUR WORK ALL RIGHTS OF DESIGN AND INVENTION ARE RESERVED THIS IS AN ELECTRONICALLY GENERATED DOCUMENT - DO NOT SCALE THIS PRINT				RFP	04/12/02		CAD FILE		00501001	SIZE	DRAWING NO.	REV
				DIST		BRF-NLV				A	005010-01	