

# PRODUCT INFORMATION PACKET



Model No: EXLM21086

Catalog No: EXLM21086

EXLM21086..5HP..3530RPM.213U.TEFC.460V.3PH.60HZ.CONT.65C.1.0SF.RIGID.....

Regal and Leeson are trademarks of Regal Rexnord Corporation or one of its affiliated companies.  
©2024 Regal Rexnord Corporation, All Rights Reserved. MC017097E





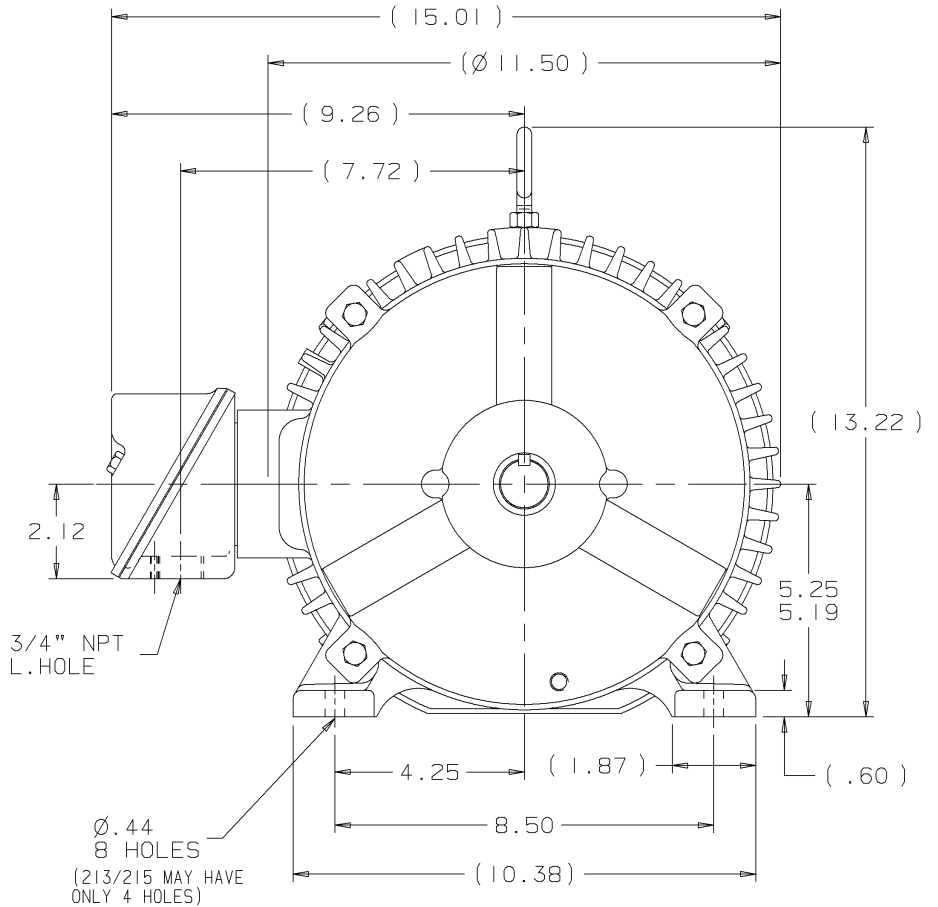
### Nameplate Specifications

Phase	3	Output HP	5 Hp
Output KW	3.7 kW	Voltage	460 V
Speed	3530 rpm	Service Factor	1
Frame	213U	Enclosure	Totally Enclosed Fan Cooled
Thermal Protection	No Protection	Efficiency	87.5 %
Ambient Temperature	65 °C	Frequency	60 Hz
Current	6.4 A	Power Factor	85
Duty	Continuous	Insulation Class	F
Design Code	B	KVA Code	G
Drive End Bearing Size	307	Opp Drive End Bearing Size	206
UL	Recognized	CSA	Y
CE	Y	IP Code	43
Number of Speeds	1		

### Technical Specifications

Electrical Type	Squirrel Cage Induction Run	Starting Method	Across The Line
Poles	2	Rotation	Reversible
Resistance Main	2.1 Ohms	Mounting	Rigid Base
Motor Orientation	Horizontal	Drive End Bearing	Ball
Opp Drive End Bearing	Ball	Frame Material	Cast Iron
Shaft Type	U	Assembly/Box Mounting	F1/F2 CAPABLE
Outline Drawing	B-SS88189LN-725	Connection Drawing	A-EE7300-LN

This is an uncontrolled document once printed or downloaded and is subject to change without notice. Date Created:10/01/2024



1. CONDUIT BOX CAN BE ROTATED IN 90° STEPS.
2. CONDUIT BOX CAN BE MOUNTED ON OPPOSITE SIDE BY REMOVING BRACKETS AND TURNING FRAME 180°.
3. NAMEPLATE TO BE READ FROM CONDUIT BOX SIDE OF MOTOR

9/5/2007 6:28:53 AM -

ERROR: syntaxerror  
OFFENDING COMMAND: --nostringval--

STACK:

/RS  
-dictionary-  
/Pscript\_WinNT\_Compat  
-dictionary-


EE7300-LN

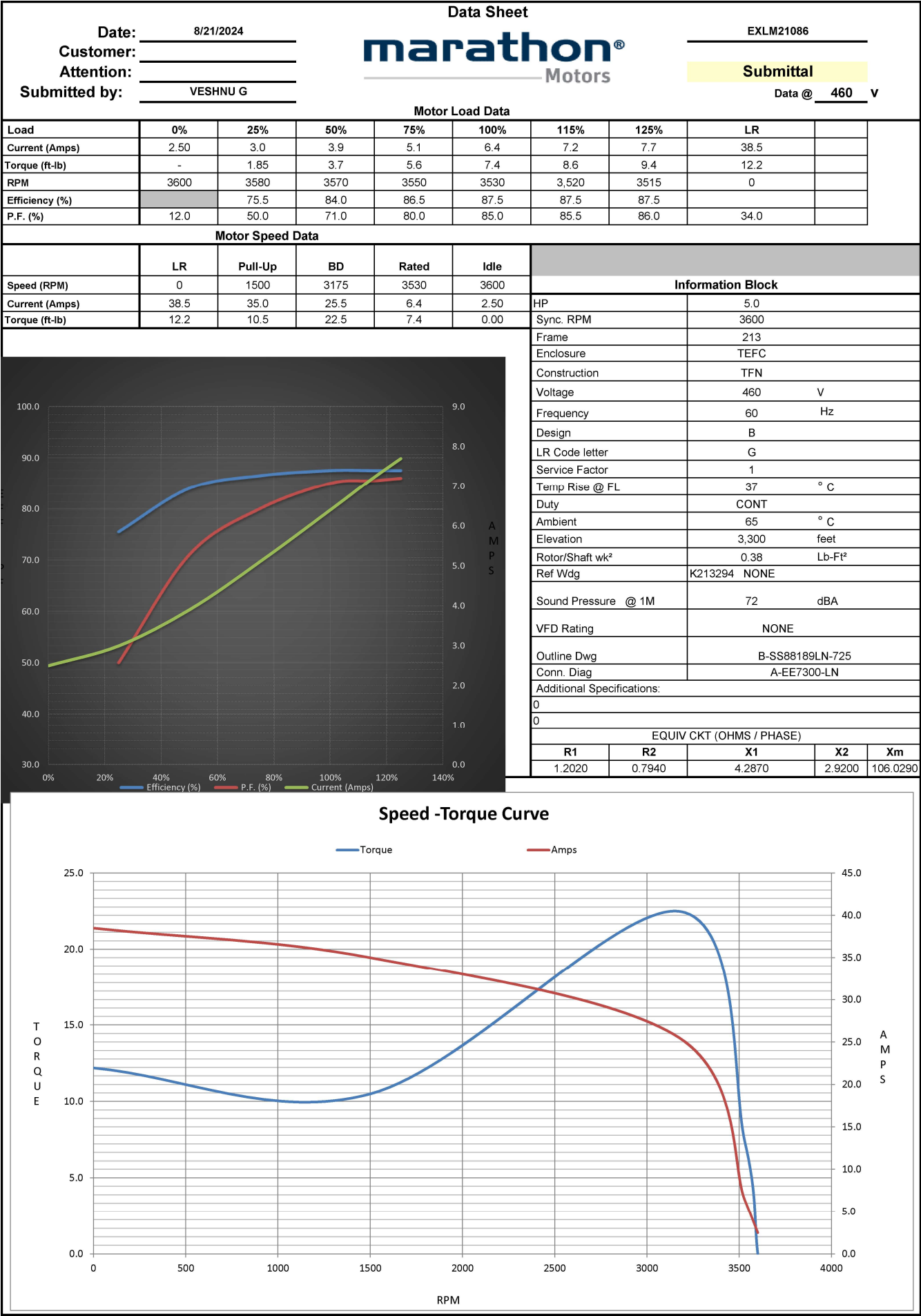
The diagram illustrates a three-phase induction motor. The stator (labeled B) is a circular structure with three windings (T1, T2, T3) distributed around its circumference. The rotor (labeled C) is a circular structure inside the stator, with a label 'A' indicating the air gap. The entire assembly is mounted on a base (labeled D). The stator is labeled B and the rotor is labeled C.

The diagram illustrates three parallel merging operations. Each operation consists of two input lines on the left and one output line on the right. The inputs are labeled T1, T2, and T3, and the outputs are labeled L1, L2, and L3. The lines for each operation are connected by a small black dot, representing a merge point.

VIEW OF TERMINAL END

L1	<u>WHITE</u>
L2	<u>RED</u>
L3	BLACK

				TOLERANCES UNLESS SPECIFIED			DRAWN BLR 08-13-1999		
				DEC.	INCHES		CHK ML 08-13-1999		
				.X	±.1		APPD GK 08-13-1999		
				.XX	±.02		SCALE 1=1		
2	ADDED OPTIONAL CORD CONNECTION PER MU47226	CTO 03-31-2004	PJB	.XXX	±.005	TITLE CONNECTION DIAGRAM SINGLE VOLT – 3Ø MOTOR	REF		
1	NEW DRAWING	CTO 08-13-1999		.XXXX	±.0005	MAT'L.	FMF		
NO.	REVISION	BY & DATE	CHK	ANG	± 7'30"	FINISH	PREV		
THIS DRAWING IN DESIGN AND DETAIL IS OUR PROPERTY AND MUST NOT BE USED EXCEPT IN CONNECTION WITH OUR WORK ALL RIGHTS OF DESIGN AND INVENTION ARE RESERVED THIS IS AN ELECTRONICALLY GENERATED DOCUMENT – DO NOT SCALE THIS PRINT				RFP		CAD FILE EE7300_LN	SIZE A	DRAWING NO. EE7300-LN	PAGE OF 2
				DIST WP					



6 of 6