

PRODUCT INFORMATION PACKET



Model No: EXLM16301

Catalog No: EXLM16301

EXLM16301..10HP..1745/1440RPM.215TC.TEFC.230/460//208/415V.3PH.60/50HZ.CONT.40C.1.25/1.0SF.ROUND...

.....

Regal and Leeson are trademarks of Regal Rexnord Corporation or one of its affiliated companies.

©2023 Regal Rexnord Corporation, All Rights Reserved. MC017097E





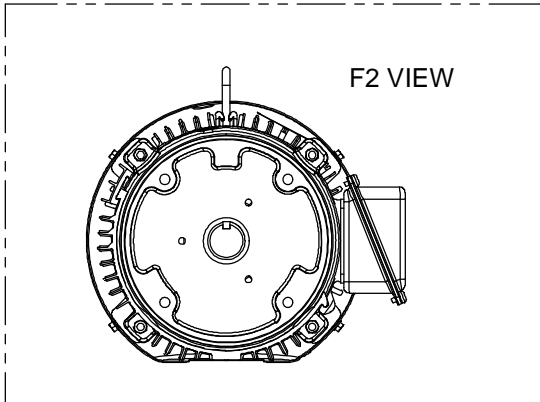
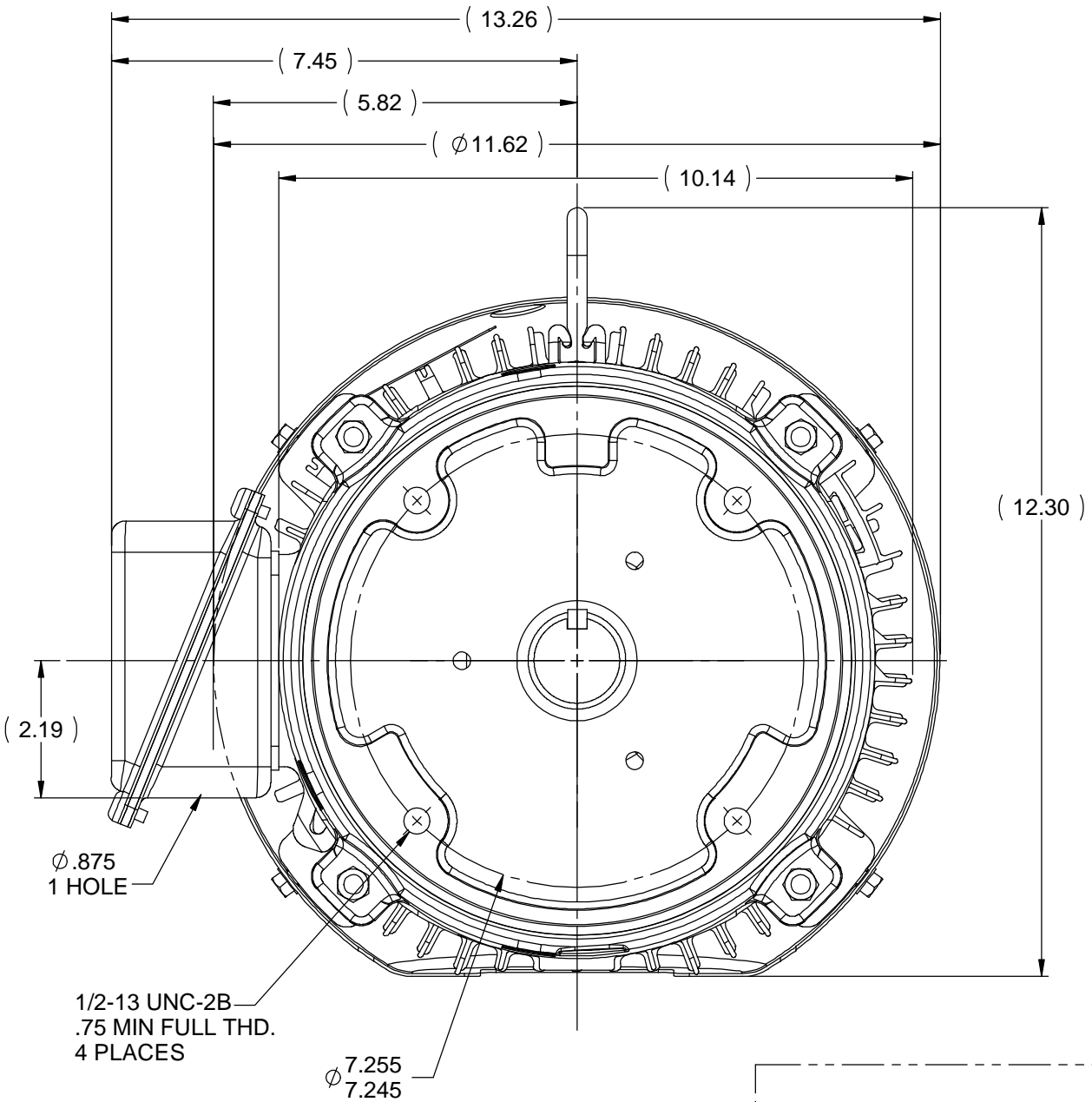
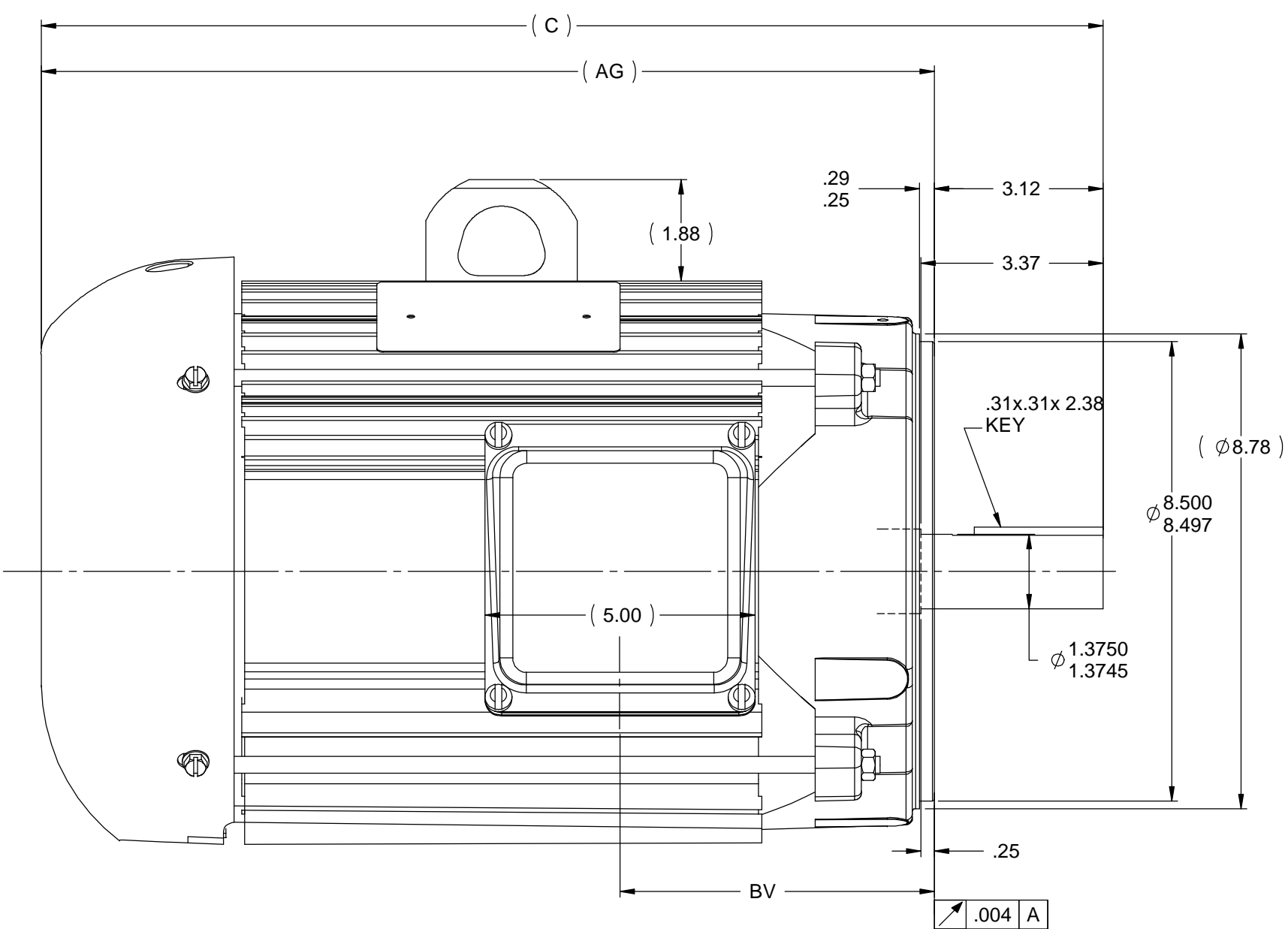
Nameplate Specifications

Phase	3	Output HP	10 & 10 Hp
Output KW	7.5 & 7.5 kW	Voltage	230/460 & 208/415 V
Speed	1745 & 1440 rpm	Service Factor	1.25 & 1.0
Frame	215TC	Enclosure	Totally Enclosed Fan Cooled
Thermal Protection	No Protection	Efficiency	89.5 & 86.5 %
Ambient Temperature	40 °C	Frequency	60 & 50 Hz
Current	27/13.5 & 31/15.5 A	Power Factor	78
Duty	Continuous	Insulation Class	F
Design Code	B	KVA Code	G
Drive End Bearing Size	208	Opp Drive End Bearing Size	206
UL	Recognized	CSA	Y
CE	Y	IP Code	43
Number of Speeds	1		

Technical Specifications


Electrical Type	Squirrel Cage Inverter Rated	Starting Method	Line Or Inverter
Poles	4	Rotation	Reversible
Resistance Main	1.16 Ohms	Mounting	Round
Motor Orientation	Horizontal	Drive End Bearing	Ball
Opp Drive End Bearing	Ball	Frame Material	Aluminum
Shaft Type	T	Assembly/Box Mounting	F1/F2 CAPABLE
Inverter Load	VARIABLE 10:1		
Outline Drawing	B-SS330122LN-950	Connection Drawing	A-EE7308-LN

This is an uncontrolled document once printed or downloaded and is subject to change without notice. Date Created:06/23/2023



NOTES:
1- BOX CAN BE ROTATED IN 90° STEPS.
2- NAMEPLATE TO BE READ FROM C'BOX SIDE OF MOTOR.

DASH	FRAME	C	AG	BV
800	215TC	18.13	15.01	5.81
950	215TC	19.63	16.51	5.81
1050	215TC	20.63	17.51	5.81

				TOLERANCES UNLESS SPECIFIED			DRAWN MJK 08-29-05		
				DEC	INCHES		CHK DRS 08-29-05		
				.X	±.1		APPR DRN 08-29-05		
3	ADDED TOLERANCE TO C-FACE	NK 09-25-2018	ST	.XX	±.03	TITLE OUTLINE NEMA MOTORS 210T0 FR. - TEFC - FOOTLESS	SCALE 1:2.66667		
2	CORRECTED AG & BV 08-0059	RWR 01-08-2008	ML	.XXX	±.005		REF		
1	SWITCH 'BV' AND 'AG' LABELS ECN8850	RWR 07-05-2006	ML	.XXXX	±.0005	MAT'L	FMF		
NO	REVISION	BY & DATE	CHK	ANG	±7°30"	FINISH	PREV		
THIS DRAWING IN DESIGN AND DETAIL IS OUR PROPERTY AND MUST NOT BE USED EXCEPT IN CONNECTION WITH OUR WORK. ALL RIGHTS OF DESIGN AND INVENTION ARE RESERVED. THIS IS AN ELECTRONICALLY GENERATED DOCUMENT - DO NOT SCALE THIS PRINT			RFP			CAD FILE SS330122LN	SIZE	DRAWING NO	REV
			DIST LB				B	SS330122LN	3

THREE PHASE
DUAL VOLTAGE MOTOR

HIGH VOLTAGE



LOW VOLTAGE



VIEW OF TERMINAL END

REF.
WINDING DIAGRAM

T8Y, T2Y, T2BL, T4BX, T2EC, T2G
T6BZ, T2B, T6BL, T4AV, T6B, T4B

OPTIONAL CORD
CONNECTION

L1 — WHITE
L2 — RED
L3 — BLACK

				TOLERANCES UNLESS SPECIFIED			DRAWN BLR 06/11/1999			
				DEC.	INCHES		CHK ML 06/18/1999			
				.X	±.1		APPD GK 06/18/1999			
3	ADDED THE OPTIONAL CORD CONNECTION MU46318	RDH 04/24/2003	DRS	.XX	±.02	TITLE CONNECTION DIAGRAM 3ø – DUAL VOLTAGE MOTOR	SCALE 1=1			
2	RE-ISSUE, ADDED '-' TO PART NUMBER	BLR 08/09/1999	GK	.XXX	±.005		REF			
1	NEW DRAWING	BLR 06/18/1999	GK	.XXXX	±.0005	MAT'L.	FMF			
NO.	REVISION	BY & DATE	CHK	ANG	±7'30"	FINISH	PREV			
THIS DRAWING IN DESIGN AND DETAIL IS OUR PROPERTY AND MUST NOT BE USED EXCEPT IN CONNECTION WITH OUR WORK ALL RIGHTS OF DESIGN AND INVENTION ARE RESERVED THIS IS AN ELECTRONICALLY GENERATED DOCUMENT – DO NOT SCALE THIS PRINT			RFP		CAD FILE EE7308LN		SIZE	DRAWING NO.	PAGE OF	REV.
			DIST WP				A	EE7308-LN		3