

# PRODUCT INFORMATION PACKET



Model No: EXG825192.00

Catalog No: EXG825192.00

EXG825192.00..7.5/5HP..1760/1470RPM.213TC.EPFC.230/460//190/380V.3PH.60/50HZ.CONT.40C.1.0SF.ROUND..

.....

Regal and Leeson are trademarks of Regal Rexnord Corporation or one of its affiliated companies.

©2023 Regal Rexnord Corporation, All Rights Reserved. MC017097E





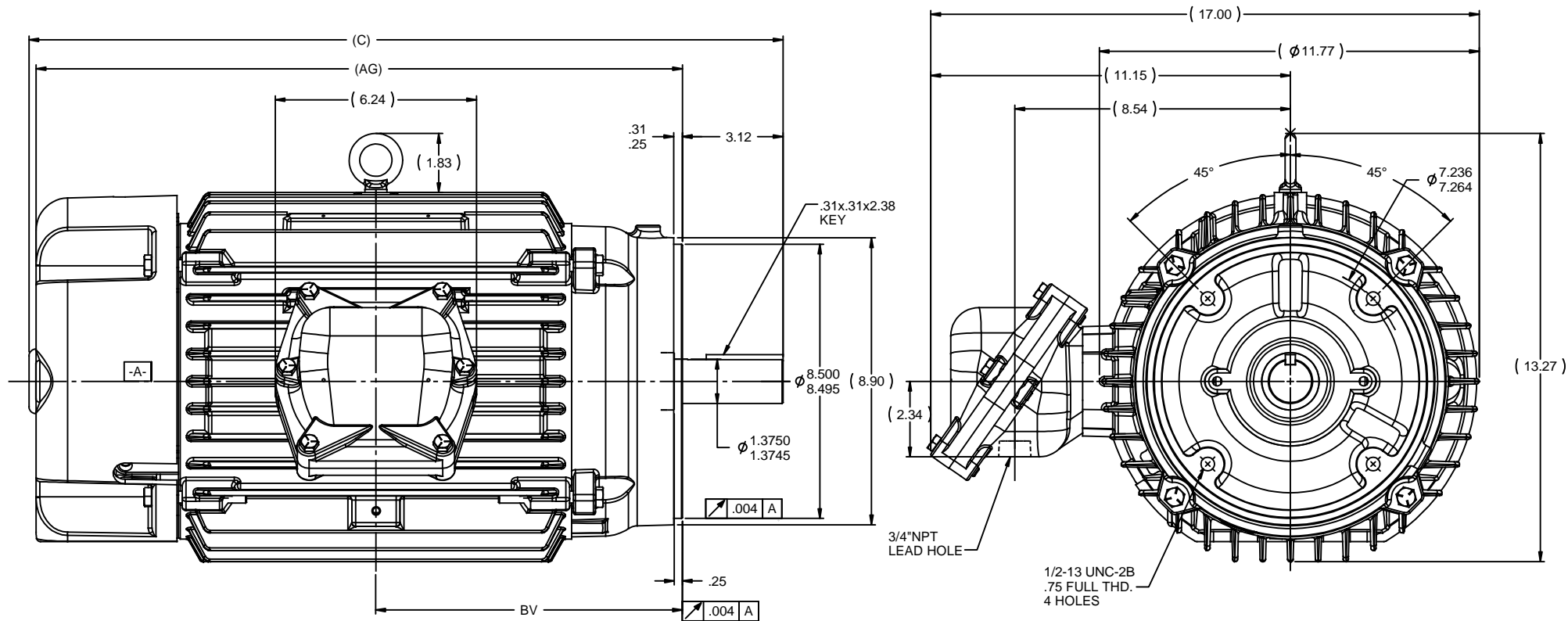
## Nameplate Specifications

Phase	3	Output HP	7.50 & 5 Hp
Output KW	5.6 & 3.7 kW	Voltage	230/460 & 190/380 V
Speed	1760 & 1470 rpm	Service Factor	1.0 & 1.0
Frame	213TC	Enclosure	Explosion Proof Fan cooled
Thermal Protection	Thermostat	Efficiency	89.5 & 89.5 %
Ambient Temperature	40 °C	Frequency	60 & 50 Hz
Current	20/10 & 17/8.5 A	Power Factor	78
Duty	Continuous	Insulation Class	B
Design Code	B	KVA Code	H
Drive End Bearing Size	6208	Opp Drive End Bearing Size	6309
UL	No	CSA	N
CE	N	IP Code	54
Number of Speeds	1	Hazardous Location	EXP PROOF CL I GR D CL II GR F&G T3B

## Technical Specifications

Electrical Type	Squirrel Cage Induction Run	Starting Method	Across The Line
Poles	4	Rotation	Reversible
Resistance Main	1.56 Ohms	Mounting	Round
Motor Orientation	Horizontal	Drive End Bearing	Ball
Opp Drive End Bearing	Ball	Frame Material	Cast Iron
Shaft Type	T	Assembly/Box Mounting	F1 ONLY
Outline Drawing	037703LE-1212	Connection Drawing	EE7308T-LE


This is an uncontrolled document once printed or downloaded and is subject to change without notice. Date Created:06/23/2023



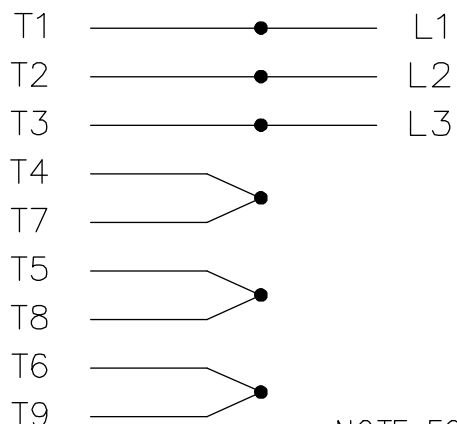
NOTES:

1. CONDUIT BOX CAN BE ROTATED IN 90° STEPS.
2. CONDUIT BOX CAN BE MOUNTED IN OPPOSITE SIDE BY REMOVING BRACKETS AND TURNING FRAME 180°. THIS MODIFICATION CAN BE PERFORMED ONLY BY THE ORIGINAL EQUIPMENT MANUFACTURER, OR BY A FACILITY THAT IS COVERED UNDER UNDERWRITERS LABORATORIES INC. CATEGORY PTKQ, TITLED "MOTOR AND GENERATORS,. REBUILT FOR USE IN HAZARDOUS LOCATION".
3. NAMEPLATE TO BE READ FROM CONDUIT BOX SIDE OF MOTOR.

1212	213/215	23.45	20.11	9.5
912	213/215	20.45	17.11	8
DASH	FRAME	C	AG	BV

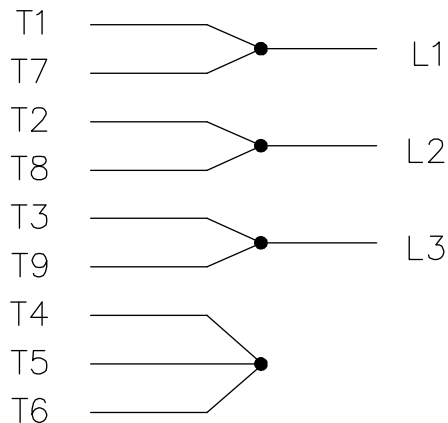
					TOLERANCES UNLESS SPECIFIED		ELECTRIC MOTORS GEARMOTORS AND DRIVES		DRAWN NB 9/15/2011		
				DEC	INCHES				CHK	ST 9/15/2011	
				X	±.1				APPR		
				XX	±.02				SCALE	1:8	
				XXX	±.005				REF	037703	
				XXXX	±.0005	MATL		FMF			
NO	REVISION	BY & DATE	CHK	ANG	±7°30"	FINISH			PREV		
THIS DRAWING IN DESIGN AND DETAIL IS OUR PROPERTY AND MUST NOT BE USED EXCEPT IN CONNECTION WITH OUR WORK. ALL RIGHTS OF DESIGN AND INVENTION ARE RESERVED. THIS IS AN ELECTRONICALLY GENERATED DOCUMENT - DO NOT SCALE THIS PRINT						RFP	CAD FILE		SIZE	DRAWING NO	REV
			DIST		037703LE	B	037703LE				

# HIGH VOLTAGE



NOTE FOR FACTORY USE ONLY:  
TO SURGE TEST FOR COMMON CONNECT:  
HIGH VOLT: CONNECT P1 TO T1  
THEN P2 TO L1  
LOW VOLT: CONNECT P1 TO T1 & T7,  
THEN P2 TO L1

# LOW VOLTAGE

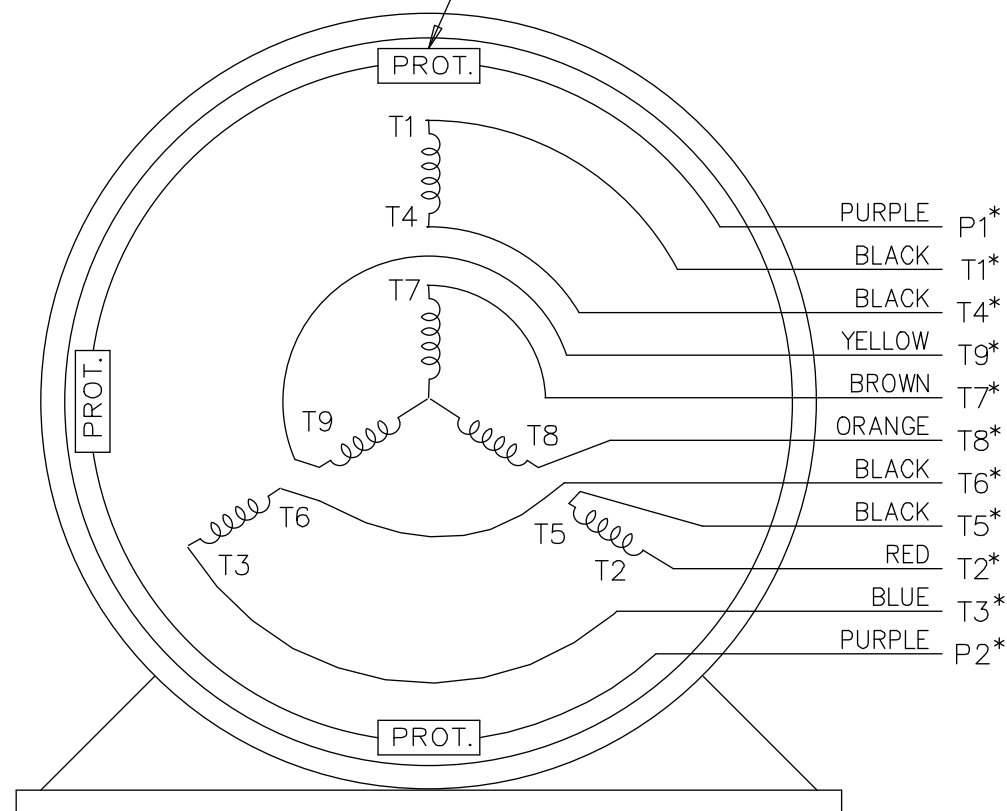


\* USE LEADS AS PER PLANT STANDARD IRRWSPECTIVE OF THEIR COLOUR.


# THREE PHASE DUAL VOLTAGE MOTOR

EE7308T-LE

THREMO-PROTECTORS  
CONNECTED IN SERIES.



VIEW OF TERMINAL END

			TOLERANCES UNLESS SPECIFIED			 ELECTRIC MOTORS GEARMOTORS AND DRIVES	DRAWN TJB 05-07-2002		
05	ADDED * NOTE PER ECN # 26921	UD 01-30-2013	JD	DEC.	INCHES		CHK	ML	05-08-2002
04	ADDED COLORS TO "T & P" LEADS CN 40494	MSG 08-08-2006	ML	.X	±.1	TITLE CONNECTION DIAGRAM 3 PHASE - DUAL VOLTAGE MOTOR	APPD	TB	05-08-2002
03	RE-ISSUE	NJS 04-21-2004	JET	.XX	±.02		SCALE	1=1	
02	REDRAWN	TAT 04-20-2004	ML	.XXX	±.005		REF		
01	NEW DRAWING CN 34708	TJB 05-08-2002	ML	.XXXX	±.0005		FMF		
NO.	REVISION	BY & DATE	CHK	ANG	±7'30"	FINISH	PREV		
THIS DRAWING IN DESIGN AND DETAIL IS OUR PROPERTY AND MUST NOT BE USED EXCEPT IN CONNECTION WITH OUR WORK ALL RIGHTS OF DESIGN AND INVENTION ARE RESERVED THIS IS AN ELECTRONICALLY GENERATED DOCUMENT - DO NOT SCALE THIS PRINT			RFP			CAD FILE EE7308T_LE	SIZE A	DRAWING NO. EE7308T-LE	PAGE OF 05
			DIST LB-WP-LE						