

PRODUCT INFORMATION PACKET



Model No: EXG825188.00

Catalog No: EXG825188.00

EXG825188.00..7.5/5HP..3530/2950RPM.213TC.EPFC.230/460//190/380V.3PH.60/50HZ.CONT.40C.1.15SF.ROUND.

.....

Regal and Leeson are trademarks of Regal Rexnord Corporation or one of its affiliated companies.

©2023 Regal Rexnord Corporation, All Rights Reserved. MC017097E



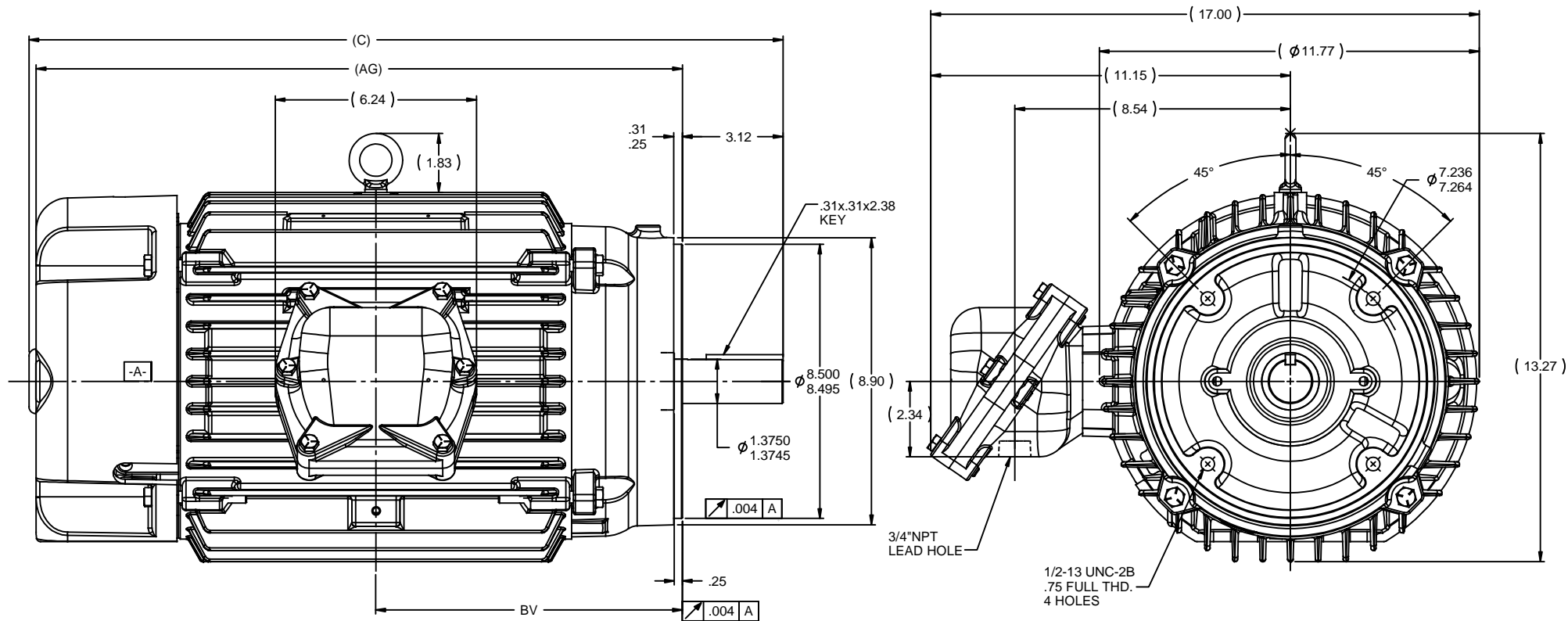


Nameplate Specifications

Phase	3	Output HP	7.50 & 5 Hp
Output KW	5.6 & 3.7 kW	Voltage	230/460 & 190/380 V
Speed	3530 & 2950 rpm	Service Factor	1.15 & 1.15
Frame	213TC	Enclosure	Explosion Proof Fan cooled
Thermal Protection	Thermostat	Efficiency	88.5 & 89.5 %
Ambient Temperature	40 °C	Frequency	60 & 50 Hz
Current	19/9.5 & 15/7.5 A	Power Factor	86
Duty	Continuous	Insulation Class	F
Design Code	B	KVA Code	H
Drive End Bearing Size	6309	Opp Drive End Bearing Size	6208
UL	No	CSA	N
CE	N	IP Code	54
Number of Speeds	1	Hazardous Location	EXP PROOF CL I GR D CL II GR F&G T3B

Technical Specifications


Electrical Type	Squirrel Cage Inverter Rated	Starting Method	Line Or Inverter
Poles	2	Rotation	Reversible
Resistance Main	1.15 Ohms	Mounting	Round
Motor Orientation	Horizontal	Drive End Bearing	Ball
Opp Drive End Bearing	Ball	Frame Material	Cast Iron
Shaft Type	T	Assembly/Box Mounting	F1 ONLY
Inverter Load	CONSTANT 10:1		
Outline Drawing	037703LE-1212	Connection Drawing	A-EE7308T-LE



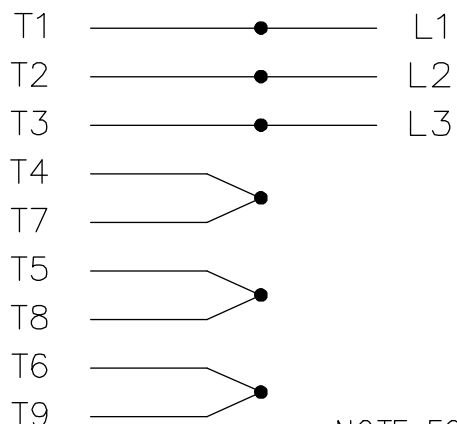
NOTES:

1. CONDUIT BOX CAN BE ROTATED IN 90° STEPS.
2. CONDUIT BOX CAN BE MOUNTED IN OPPOSITE SIDE BY REMOVING BRACKETS AND TURNING FRAME 180°. THIS MODIFICATION CAN BE PERFORMED ONLY BY THE ORIGINAL EQUIPMENT MANUFACTURER, OR BY A FACILITY THAT IS COVERED UNDER UNDERWRITERS LABORATORIES INC. CATEGORY PTKQ, TITLED "MOTOR AND GENERATORS,. REBUILT FOR USE IN HAZARDOUS LOCATION".
3. NAMEPLATE TO BE READ FROM CONDUIT BOX SIDE OF MOTOR.

1212	213/215	23.45	20.11	9.5
912	213/215	20.45	17.11	8
DASH	FRAME	C	AG	BV

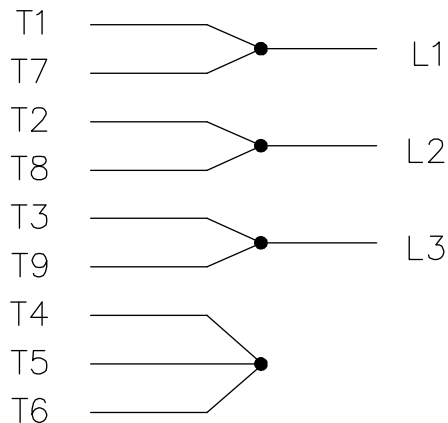
					TOLERANCES UNLESS SPECIFIED		ELECTRIC MOTORS GEARMOTORS AND DRIVES	DRAWN NB 9/15/2011		
				DEC	INCHES			CHK	ST 9/15/2011	
				X	±.1			APPR		
				XX	±.02			SCALE	1:8	
				XXX	±.005			REF	037703	
				XXXX	±.0005	MATL	FMF			
NO	REVISION	BY & DATE	CHK	ANG	±7°30"	FINISH		PREV		
THIS DRAWING IN DESIGN AND DETAIL IS OUR PROPERTY AND MUST NOT BE USED EXCEPT IN CONNECTION WITH OUR WORK. ALL RIGHTS OF DESIGN AND INVENTION ARE RESERVED. THIS IS AN ELECTRONICALLY GENERATED DOCUMENT - DO NOT SCALE THIS PRINT						RFP	CAD FILE	SIZE	DRAWING NO	REV
						DIST	037703LE	B	037703LE	

HIGH VOLTAGE



NOTE FOR FACTORY USE ONLY:
TO SURGE TEST FOR COMMON CONNECT:
HIGH VOLT: CONNECT P1 TO T1
THEN P2 TO L1
LOW VOLT: CONNECT P1 TO T1 & T7,
THEN P2 TO L1

LOW VOLTAGE

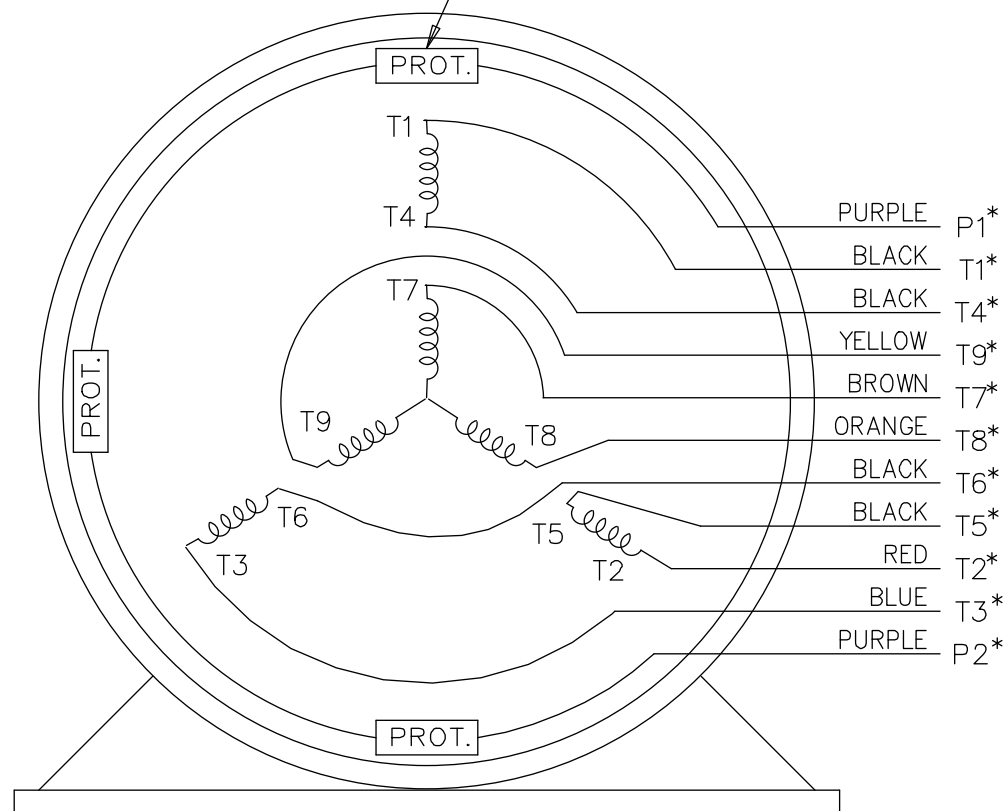


* USE LEADS AS PER PLANT STANDARD IRRWSPECTIVE OF THEIR COLOUR.


THREE PHASE DUAL VOLTAGE MOTOR

EE7308T-LE

THREMO-PROTECTORS
CONNECTED IN SERIES.



VIEW OF TERMINAL END

				TOLERANCES UNLESS SPECIFIED		 ELECTRIC MOTORS GEARMOTORS AND DRIVES	DRAWN TJB 05-07-2002			
05	ADDED * NOTE PER ECN # 26921	UD 01-30-2013	JD	DEC.	INCHES		CHK ML 05-08-2002			
04	ADDED COLORS TO "T & P" LEADS CN 40494	MSG 08-08-2006	ML	.X	±.1		APPD TB 05-08-2002			
03	RE-ISSUE	NJS 04-21-2004	JET	.XX	±.02	TITLE CONNECTION DIAGRAM 3 PHASE – DUAL VOLTAGE MOTOR	SCALE 1=1			
02	REDRAWN	TAT 04-20-2004	ML	.XXX	±.005		REF			
01	NEW DRAWING CN 34708	TJB 05-08-2002	ML	.XXXX	±.0005	MAT'L.	FMF			
NO.	REVISION	BY & DATE	CHK	ANG	±7'30"	FINISH	PREV			
THIS DRAWING IN DESIGN AND DETAIL IS OUR PROPERTY AND MUST NOT BE USED EXCEPT IN CONNECTION WITH OUR WORK ALL RIGHTS OF DESIGN AND INVENTION ARE RESERVED THIS IS AN ELECTRONICALLY GENERATED DOCUMENT – DO NOT SCALE THIS PRINT			RFP			CAD FILE EE7308T_LE	SIZE	DRAWING NO.	PAGE OF	REV.
			DIST LB-WP-LE				A	EE7308T-LE		05