

PRODUCT INFORMATION PACKET



Model No: EXG131970.00

Catalog No: EXG131970.00

EXG131970.00..7.5/5.0/HP..3505/2930RPM.184JM.TEFC.208-230/460//190/380V.3PH.60/50HZ.CONT.40C.1.15SF
.RIGID.....

Regal and Leeson are trademarks of Regal Rexnord Corporation or one of its affiliated companies.

©2023 Regal Rexnord Corporation, All Rights Reserved. MC017097E





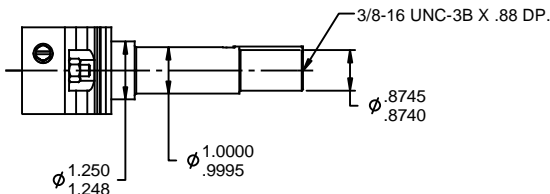
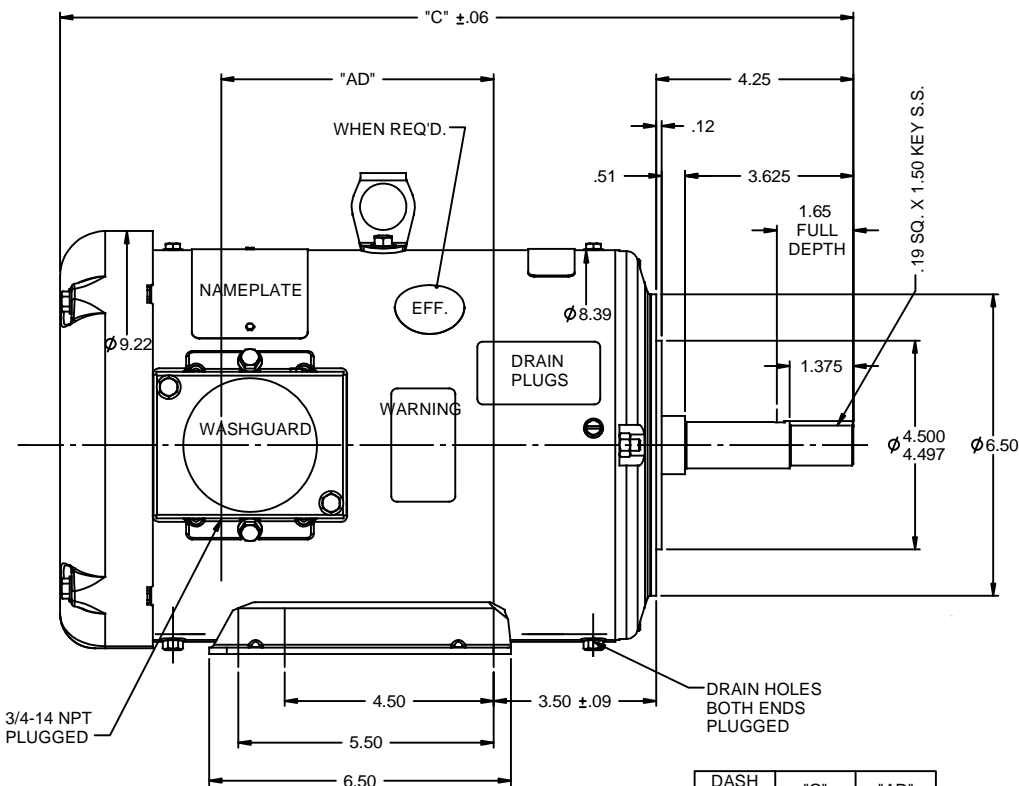
Nameplate Specifications

| | | | |
|------------------------|------------------------|----------------------------|-----------------------------|
| Phase | 3 | Output HP | 7.50 & 5 Hp |
| Output KW | 5.6 & 3.7 kW | Voltage | 208-230/460 & 190/380 V |
| Speed | 3505 & 2930 rpm | Service Factor | 1.15 & 1.15 |
| Frame | 184JM | Enclosure | Totally Enclosed Fan Cooled |
| Thermal Protection | No Protection | Efficiency | 88.5 % |
| Ambient Temperature | 40 °C | Frequency | 60 & 50 Hz |
| Current | 17.6-16.8/8.4 & 14/7 A | Power Factor | 94.5 |
| Duty | Continuous | Insulation Class | F |
| Design Code | B | KVA Code | J |
| Drive End Bearing Size | 6207 | Opp Drive End Bearing Size | 6205 |
| UL | Recognized | CSA | Y |
| CE | Y | IP Code | 55 |
| Number of Speeds | 1 | | |

Technical Specifications

| | | | |
|-----------------------|-----------------------------|-----------------------|-----------------|
| Electrical Type | Squirrel Cage Induction Run | Starting Method | Across The Line |
| Poles | 2 | Rotation | Reversible |
| Resistance Main | .27 Ohms | Mounting | Rigid Base |
| Motor Orientation | Horizontal | Drive End Bearing | Ball |
| Opp Drive End Bearing | Ball | Frame Material | Rolled Steel |
| Shaft Type | JM | Assembly/Box Mounting | F1 ONLY |
| Outline Drawing | 035480-1050 | Connection Drawing | 005010.01 |

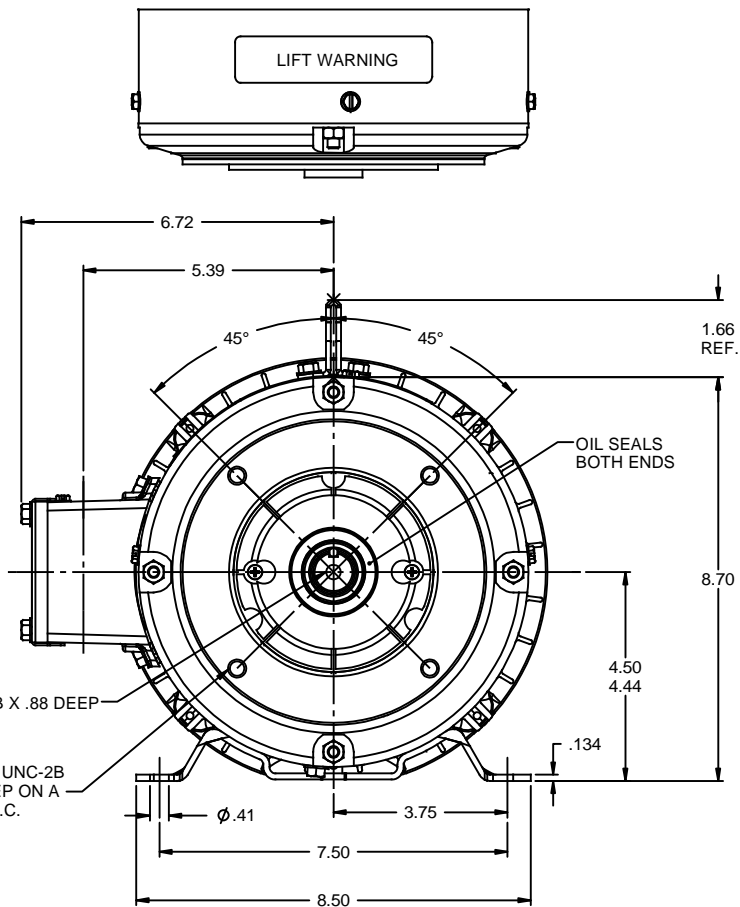
This is an uncontrolled document once printed or downloaded and is subject to change without notice. Date Created:06/22/2023



SHAFT DETAIL

| DASH NO. | "C" | "AD" |
|----------|-------|------|
| 900 | 16.13 | 4.87 |
| 950 | 16.63 | 5.37 |
| 1000 | 17.13 | 5.87 |
| 1050 | 17.63 | 6.37 |
| 1100 | 18.13 | 6.87 |
| 1150 | 18.63 | 7.37 |

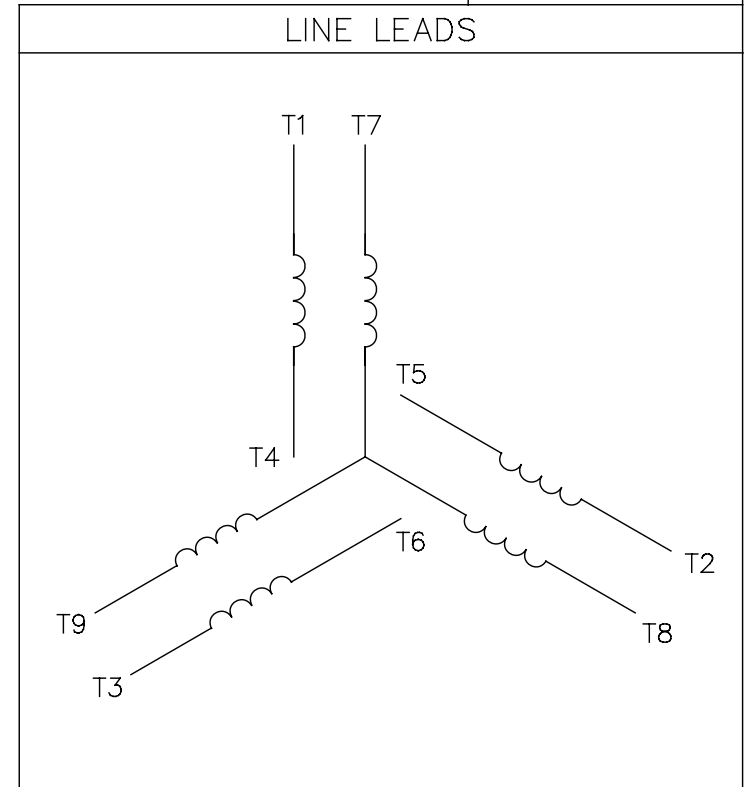
SPECIAL FEATURES:
 SHAFT SEAL & V-RING
 DRAIN HOLES IN FRAME & CONDUIT BOX
 STAINLESS STEEL SHAFT, HARDWARE & NAMEPLATE
 GASKETS THROUGHOUT




| | | | | | |
|------------------------|---------------------------------|-----------------------------|----------------|-----------------------------|-------------------|
| | | TOLERANCES UNLESS SPECIFIED | | | DRAWN LST 7/23/03 |
| | | DEC | INCHES | | |
| | | X | ±.1 | REGAL-BELOIT CORPORATION | CHK |
| | | XX | ±.03 | | APPR RW 7/29/03 |
| 02 | UPDATED PER ISAAC 10-0580 | LST 5/12/2010 | XX XXX ±.005 | TITLE OUTLINE - 180JM FRAME | SCALE 3:8 |
| - | UPDATED & REDRAWN IN SOLIDWORKS | LST 12/8/2009 | XX XXXX ±.0005 | TEFC - "JM" PUMP MOUNT | REF 035357 |
| | | | | MATL WASHGUARD | FMF |
| REVISION | | BY & DATE | CHK ANG ±1/2" | FINISH | PAGE OF |
| THIRD ANGLE PROJECTION | | RFP | PREV | SIZE B | DRAWING NO |
| | | NETWORK FILE NAME | 035480 | | REV 02 |
| | | | | | 035480 |

005010-01

VIEW FROM OUTSIDE OF MOTOR AT SWITCH END.



| VOLTAGE | L1 | L2 | L3 | JOIN & INSULATE |
|---------|-------|-------|-------|-------------------------------|
| HIGH | T1 | T2 | T3 | (T4,T7) (T5,T8) (T6,T9) |
| LOW | T1,T7 | T2,T8 | T3,T9 | T4,T5,T6 |

| | | | | | | | | | | | |
|--|-----------------------|--------------|-----|--------------------------------|--------|---|--|-----------|--------------------------|--|-----------|
| | | | | TOLERANCES UNLESS SPECIFIED | |  Regal Beloit America, Inc. | | | DRAWN RDW 04/12/02 | | |
| | | | | DEC. | INCHES | | | | CHK | | |
| | | | | .X | ±.1 | | | | APPD | | |
| | | | | .XX | ±.01 | | | | SCALE 1=1 | | |
| | | | | .XXX | ±.005 | TITLE EXTERNAL WIRING DIAGRAM 3 PHASE W/O PROTECTOR | | | REF FIG.2-51 | | |
| A | UPDATED TO REGAL LOGO | SAJ 06/26/15 | AJY | .XXXX | ±.0005 | | | | MAT'L DECAL - 004014 | | |
| NO. | REVISION | BY & DATE | CHK | ANG | ±1/2" | FINISH | | | PREV | | |
| THIS DRAWING IN DESIGN AND DETAIL IS OUR PROPERTY AND MUST NOT BE USED EXCEPT IN CONNECTION WITH OUR WORK ALL RIGHTS OF DESIGN AND INVENTION ARE RESERVED THIS IS AN ELECTRONICALLY GENERATED DOCUMENT - DO NOT SCALE THIS PRINT | | | | RFP 04/12/02 | | CAD FILE 00501001 | | SIZE A | DRAWING NO. 005010-01 | | REV. A |
| | | | | DIST BRF-NLV | | | | | | | |