

# PRODUCT INFORMATION PACKET



Model No: EXG131885.00

Catalog No: EXG131885.00

EXG131885.00..7.5/5.0HP..3505/2910RPM.180JP.ODP.208-230/460//190/380V.3PH.60/50HZ.CONT.40C.1.15SF.R  
IGID.....

Regal and Leeson are trademarks of Regal Rexnord Corporation or one of its affiliated companies.

©2023 Regal Rexnord Corporation, All Rights Reserved. MC017097E





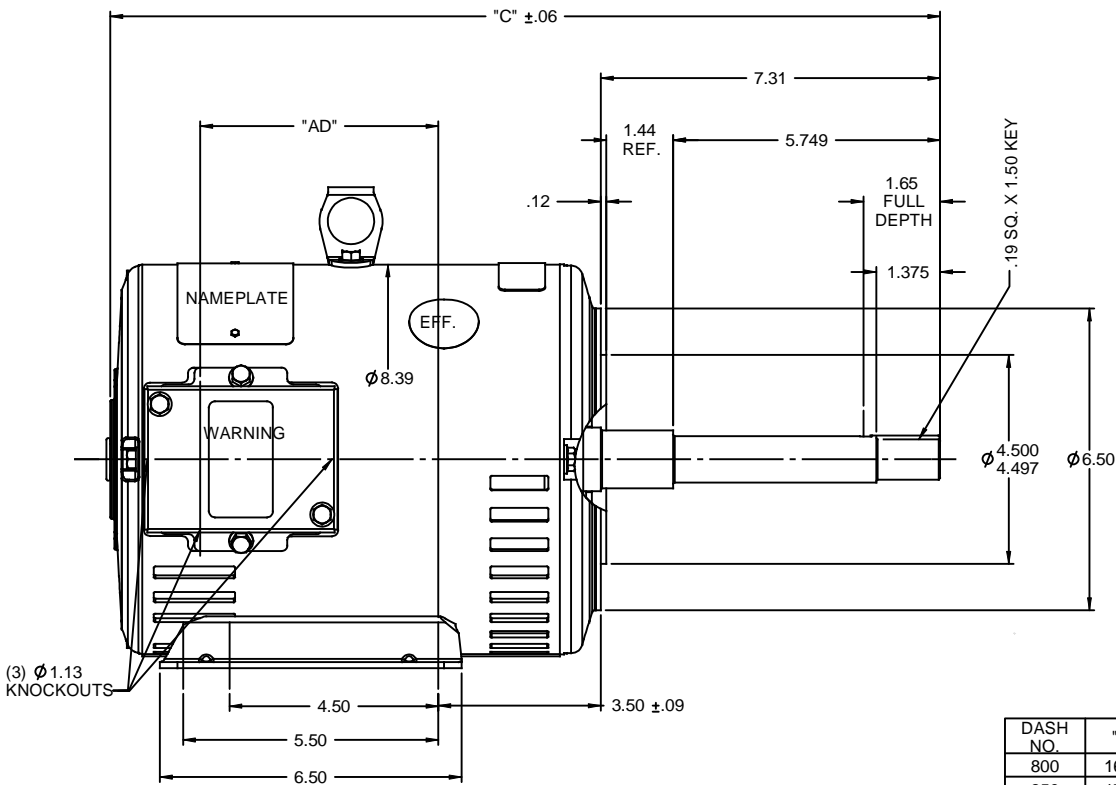
## Nameplate Specifications

Phase	3	Output HP	7.50 & 5 Hp
Output KW	5.6 & 3.7 kW	Voltage	208-230/460 & 190/380 V
Speed	3505 & 2910 rpm	Service Factor	1.15 & 1.15
Frame	180JP	Enclosure	Drip Proof
Thermal Protection	No Protection	Efficiency	87.5 %
Ambient Temperature	40 °C	Frequency	60 & 50 Hz
Current	19-17.6/8.8 & 14/7 A	Power Factor	91
Duty	Continuous	Insulation Class	F
Design Code	B	KVA Code	J
Drive End Bearing Size	6207	Opp Drive End Bearing Size	6205
UL	Recognized	CSA	Y
CE	Y	IP Code	23
Number of Speeds	1		

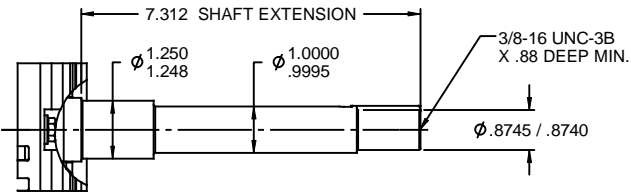
## Technical Specifications

Electrical Type	Squirrel Cage Induction Run	Starting Method	Across The Line
Poles	2	Rotation	Reversible
Resistance Main	.382 Ohms	Mounting	Rigid Base
Motor Orientation	Horizontal	Drive End Bearing	Ball
Opp Drive End Bearing	Ball	Frame Material	Rolled Steel
Shaft Type	JP	Assembly/Box Mounting	F1 ONLY
Outline Drawing	035752-1050	Connection Drawing	005010.01

This is an uncontrolled document once printed or downloaded and is subject to change without notice. Date Created:06/22/2023



(3) Ø1.13  
KNOCKOUTS

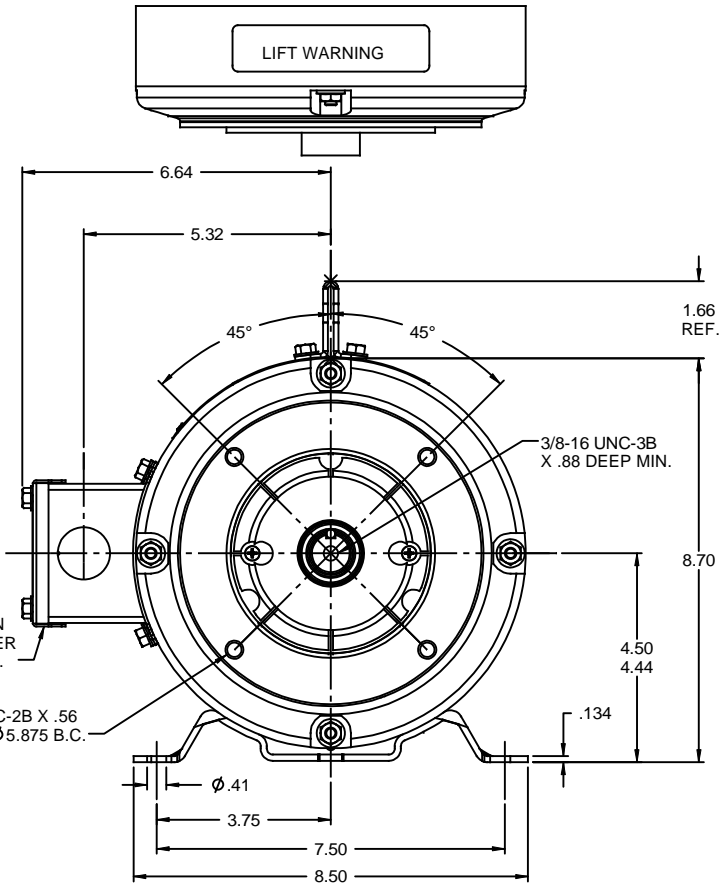


SHAFT DETAIL

DASH NO.	"C"	"AD"
800	16.88	4.13
850	17.38	4.63
900	17.88	5.13
950	18.38	5.63
1000	18.88	6.13
1050	19.38	6.63
1100	19.88	7.13
1150	20.38	7.63
1200	20.88	8.13

DECAL-  
CONNECTION  
UNDER COVER  
WHEN REQ'D.

(4) 3/8-16 UNC-2B X .56  
DEEP ON A Ø5.875 B.C.

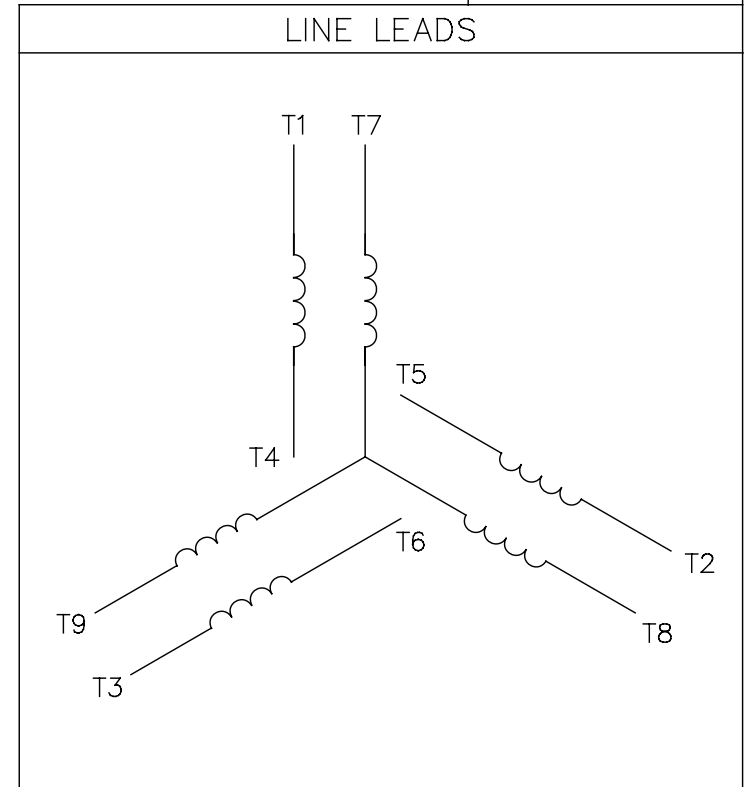


GASKETS THROUGHOUT  
 MAXIMUM FACE RUNOUT TO BE .004 T.I.R.  
 MAXIMUM PILOT ECCENTRICITY TO BE .004 T.I.R.  
 PERMISSIBLE SHAFT RUNOUT TO BE .008 T.I.R.


				TOLERANCES UNLESS SPECIFIED		<b>REGAL-BELOIT CORPORATION</b>	DRAWN LST 1/8/10	
				DEC	INCHES		CHK	
				X	±.1		APPR	
				XX	±.03		SCALE	3:8
				XXX	±.005		REF	
				XXXX	±.0005	MATL	FMF	
NO	REVISION			CHK	ANG ±1/2°	FINISH	PAGE	OF
	THIRD ANGLE PROJECTION			RFP	PREV		SIZE	DRAWING NO
				NETWORK FILE NAME			<b>B</b>	<b>035752</b>
								REV

005010-01

VIEW FROM OUTSIDE OF MOTOR AT SWITCH END.



VOLTAGE	L1	L2	L3	JOIN & INSULATE
HIGH	T1	T2	T3	(T4,T7) (T5,T8) (T6,T9)
LOW	T1,T7	T2,T8	T3,T9	T4,T5,T6

				TOLERANCES UNLESS SPECIFIED		 <b>Regal Beloit America, Inc.</b>			DRAWN RDW 04/12/02		
				DEC.	INCHES				CHK		
				.X	±.1				APPD		
				.XX	±.01				SCALE 1=1		
				.XXX	±.005	TITLE EXTERNAL WIRING DIAGRAM 3 PHASE W/O PROTECTOR			REF FIG.2-51		
A	UPDATED TO REGAL LOGO	SAJ 06/26/15	AJY	.XXXX	±.0005				MAT'L DECAL - 004014		
NO.	REVISION	BY & DATE	CHK	ANG	±1/2"	FINISH			PREV		
THIS DRAWING IN DESIGN AND DETAIL IS OUR PROPERTY AND MUST NOT BE USED EXCEPT IN CONNECTION WITH OUR WORK ALL RIGHTS OF DESIGN AND INVENTION ARE RESERVED THIS IS AN ELECTRONICALLY GENERATED DOCUMENT - DO NOT SCALE THIS PRINT				RFP 04/12/02		CAD FILE 00501001		SIZE	DRAWING NO.		REV.
				DIST BRF-NLV				A	005010-01		A