

# PRODUCT INFORMATION PACKET



Model No: EXG131884.00

Catalog No: EXG131884.00

EXG131884.00..5.0/3.0HP..3500/2920RPM.184JP.ODP.208-230/460//190/380V.3PH.60/50HZ.CONT.40C.1.15SF.R  
IGID.....

Regal and Leeson are trademarks of Regal Rexnord Corporation or one of its affiliated companies.

©2023 Regal Rexnord Corporation, All Rights Reserved. MC017097E





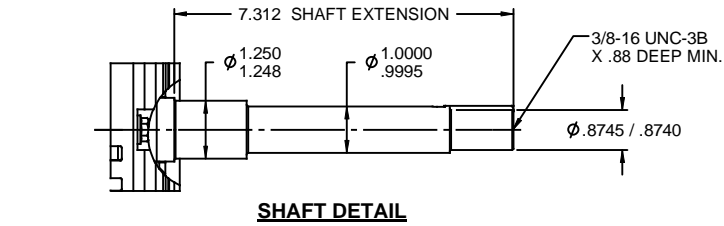
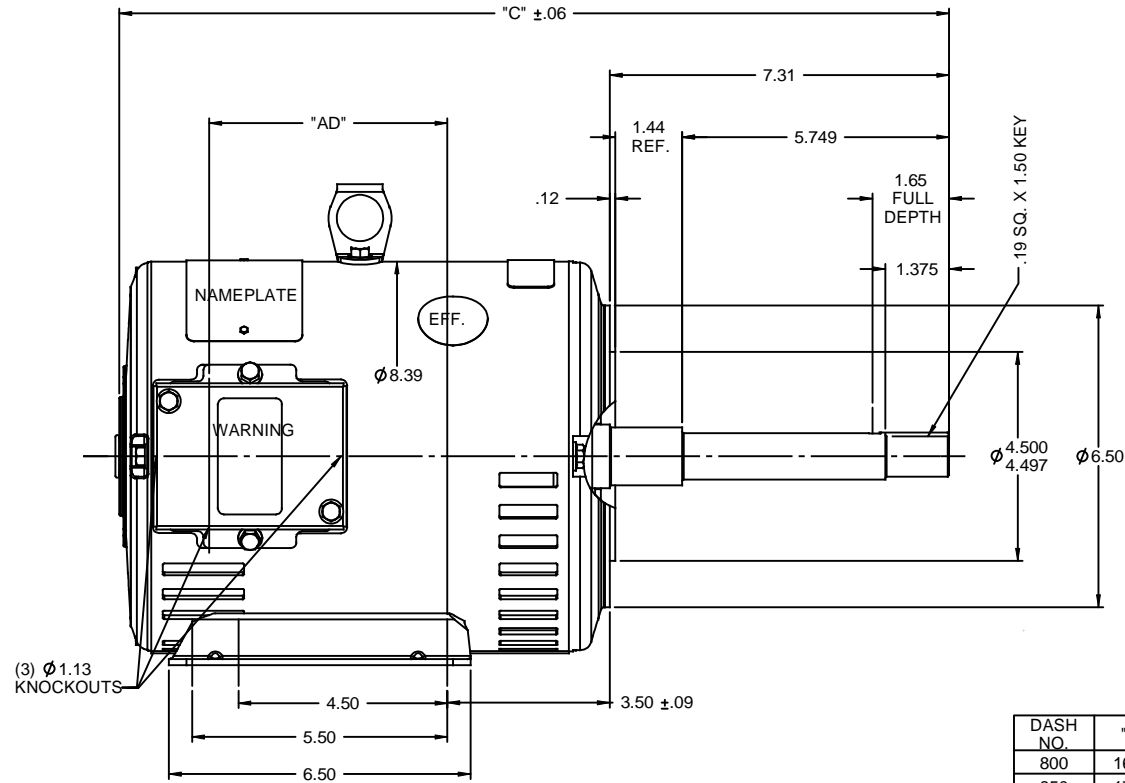
### Nameplate Specifications

Phase	3	Output HP	5 & 3 Hp
Output KW	3.7 & 2.2 kW	Voltage	208-230/460 & 190/380 V
Speed	3500 & 2920 rpm	Service Factor	1.15 & 1.15
Frame	184JP	Enclosure	Drip Proof
Thermal Protection	No Protection	Efficiency	85.5 %
Ambient Temperature	40 °C	Frequency	60 & 50 Hz
Current	13.2-12.2/6.1 & 9.4/4.7 A	Power Factor	90
Duty	Continuous	Insulation Class	F
Design Code	B	KVA Code	J
Drive End Bearing Size	6207	Opp Drive End Bearing Size	6205
UL	Recognized	CSA	Y
CE	Y	IP Code	23
Number of Speeds	1		

### Technical Specifications

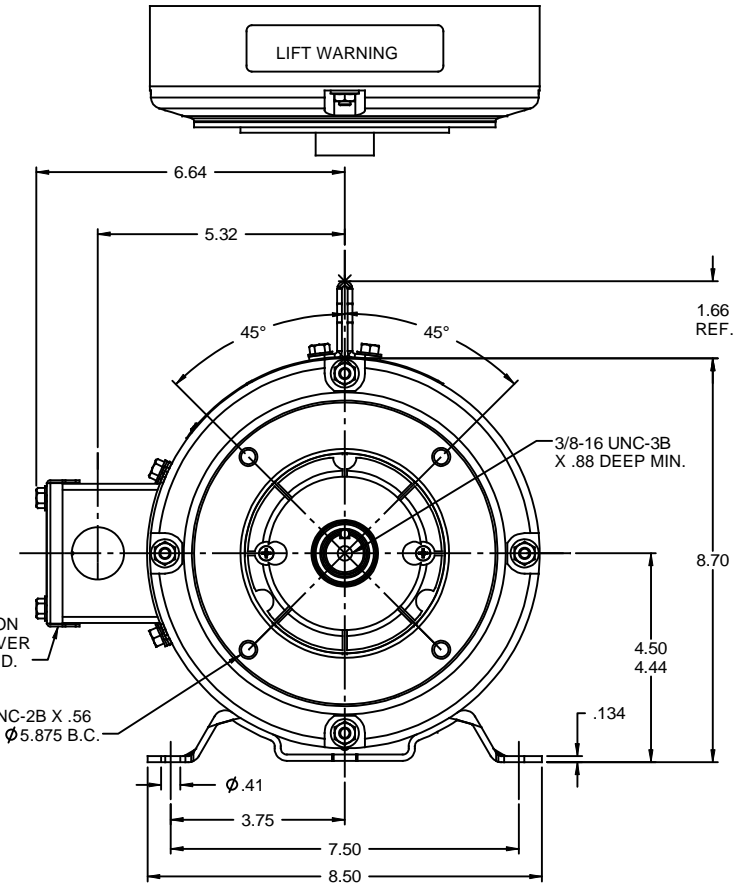
Electrical Type	Squirrel Cage Induction Run	Starting Method	Across The Line
Poles	2	Rotation	Reversible
Resistance Main	2.74 Ohms	Mounting	Rigid Base
Motor Orientation	Horizontal	Drive End Bearing	Ball
Opp Drive End Bearing	Ball	Frame Material	Rolled Steel
Shaft Type	JP	Assembly/Box Mounting	F1 ONLY
Outline Drawing	035752-900	Connection Drawing	005010.01

This is an uncontrolled document once printed or downloaded and is subject to change without notice. Date Created:06/22/2023





DECAL-  
CONNECTION  
UNDER COVER  
WHEN REQ'D.

(4) 3/8-16 UNC-2B X .56  
DEEP ON A  $\phi 5.875$  B.C.



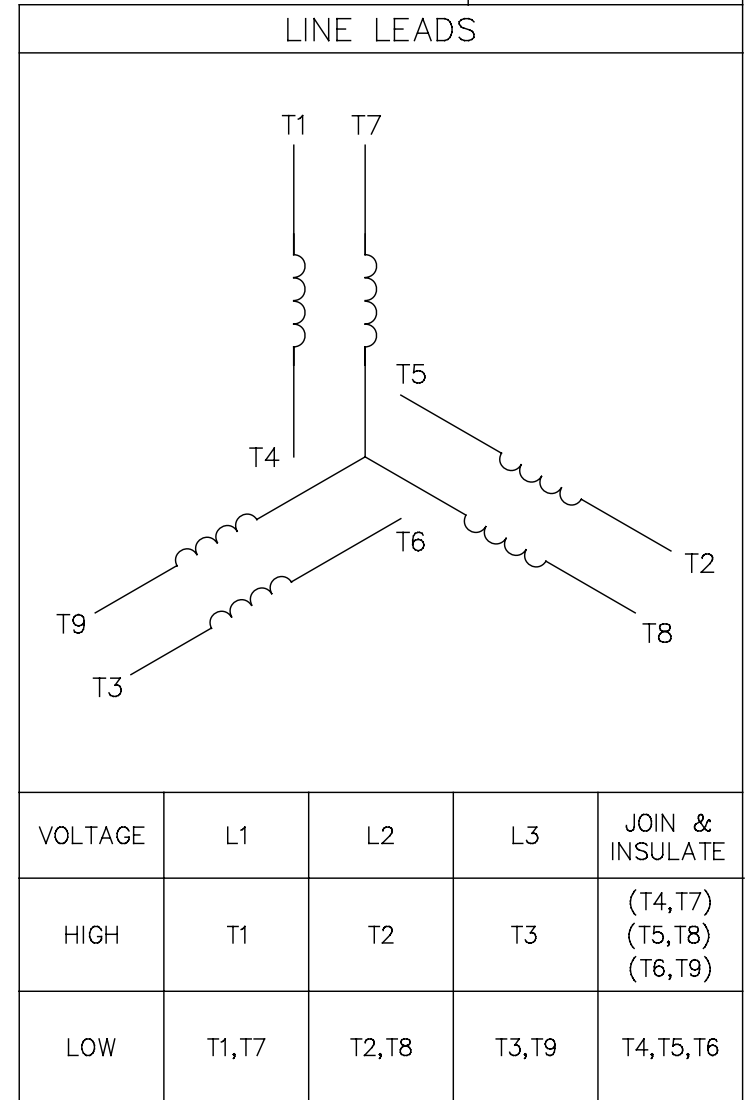
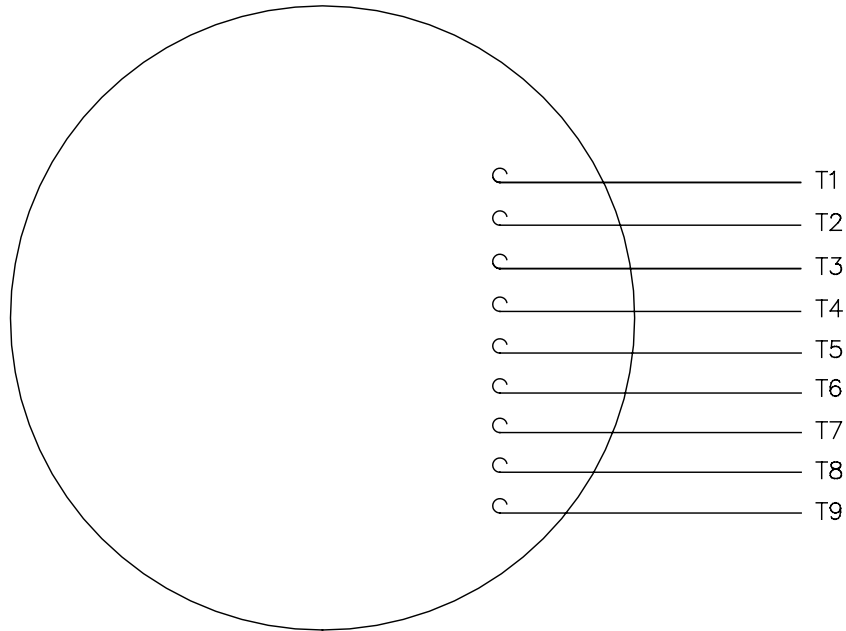
DASH NO.	"C"	"AD"
800	16.88	4.13
850	17.38	4.63
900	17.88	5.13
950	18.38	5.63
1000	18.88	6.13
1050	19.38	6.63
1100	19.88	7.13
1150	20.38	7.63
1200	20.88	8.13


GASKETS THROUGHOUT  
MAXIMUM FACE RUNOUT TO BE .004 T.I.R.  
MAXIMUM PILOT ECCENTRICITY TO BE .004 T.I.R.  
PERMISSIBLE SHAFT RUNOUT TO BE .008 T.I.R.

				TOLERANCES UNLESS SPECIFIED		 <b>REGAL-BELOIT CORPORATION</b>	DRAWN LST 1/8/10			
				DEC INCHES			CHK			
				X ±.1			APPR			
				XX ±.03			TITLE OUTLINE - 184JP FRAME			
				XXX ±.005			SCALE 3:8			
				XXXX ±.0005			REF			
						MATL		FMF		
NO	REVISION			BY & DATE	CHK ANG ±1/2°	FINISH		PAGE OF		
<div>THIRD ANGLE PROJECTION</div> 					RFP	PREV		SIZE	DRAWING NO	REV
					NETWORK FILE NAME			B	035752	

005010-01

VIEW FROM OUTSIDE OF MOTOR AT SWITCH END.



				TOLERANCES UNLESS SPECIFIED		 <b>Regal Beloit America, Inc.</b>			DRAWN RDW 04/12/02	
				DEC.	INCHES				CHK	
				.X	±.1				APPD	
				.XX	±.01				SCALE 1=1	
				.XXX	±.005	TITLE EXTERNAL WIRING DIAGRAM 3 PHASE W/O PROTECTOR			REF FIG.2-51	
A	UPDATED TO REGAL LOGO	SAJ 06/26/15	AJY	.XXXX	±.0005				MAT'L DECAL - 004014	
NO.	REVISION	BY & DATE	CHK	ANG	±1/2"	FINISH			PREV	
THIS DRAWING IN DESIGN AND DETAIL IS OUR PROPERTY AND MUST NOT BE USED EXCEPT IN CONNECTION WITH OUR WORK ALL RIGHTS OF DESIGN AND INVENTION ARE RESERVED THIS IS AN ELECTRONICALLY GENERATED DOCUMENT - DO NOT SCALE THIS PRINT			RFP 04/12/02		CAD FILE 00501001		SIZE A	DRAWING NO. 005010-01		REV. A
			DIST BRF-NLV							