

PRODUCT INFORMATION PACKET



Model No: EXG131562.00

Catalog No: EXG131562.00

EXG131562.00..3.0/2.0HP..1760/1475RPM.182JM.ODP.208-230/460//190/380V.3PH.60/50HZ.CONT.40C.1.15SF.R
IGID.....

Regal and Leeson are trademarks of Regal Rexnord Corporation or one of its affiliated companies.

©2023 Regal Rexnord Corporation, All Rights Reserved. MC017097E





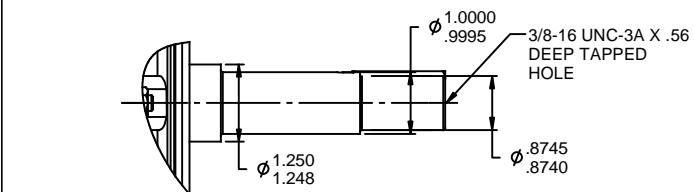
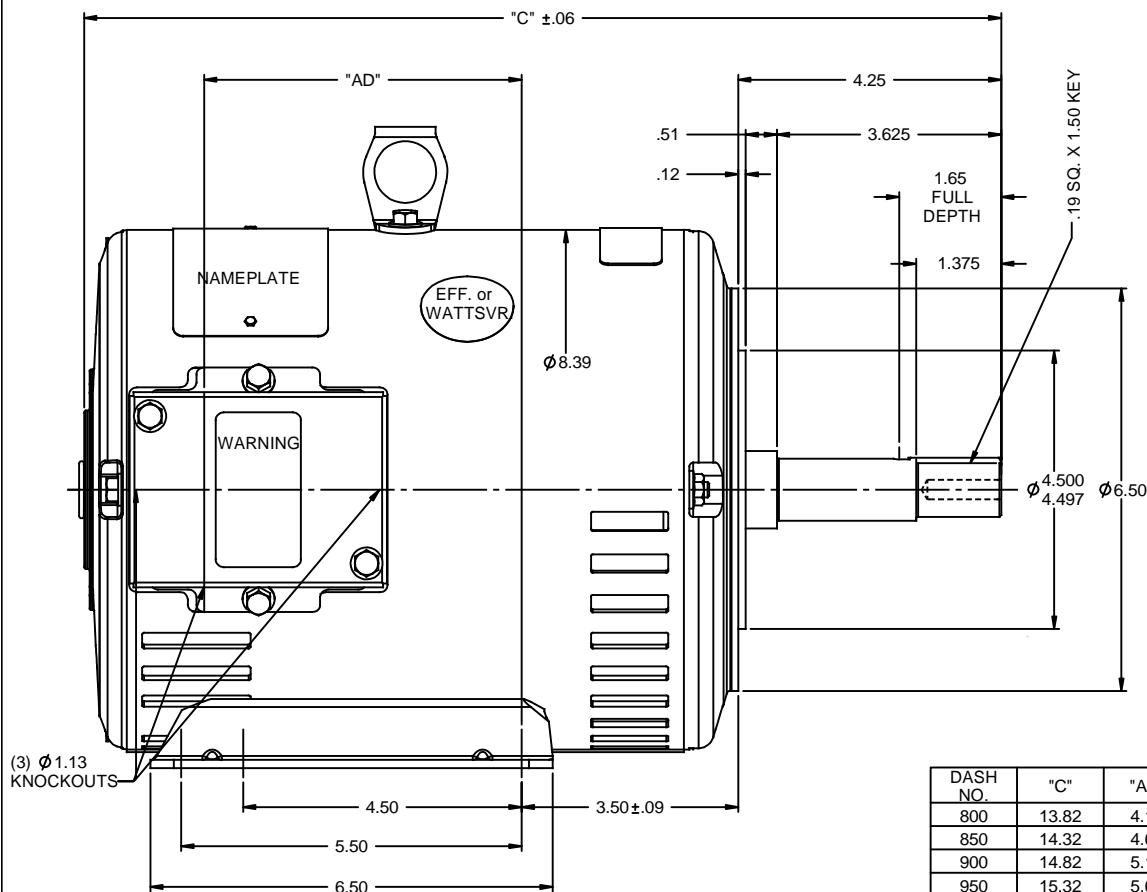
Nameplate Specifications

Phase	3	Output HP	3 & 2 Hp
Output KW	2.2 & 1.5 kW	Voltage	208-230/460 & 190/380 V
Speed	1760 & 1475 rpm	Service Factor	1.15 & 1.15
Frame	182JM	Enclosure	Drip Proof
Thermal Protection	No Protection	Efficiency	86.5 & 87 %
Ambient Temperature	40 °C	Frequency	60 & 50 Hz
Current	9-8.8/4.4 & 7.8/3.9 A	Power Factor	73
Duty	Continuous	Insulation Class	F
Design Code	B	KVA Code	K
Drive End Bearing Size	6207	Opp Drive End Bearing Size	6205
UL	Recognized	CSA	Y
CE	Y	IP Code	22
Number of Speeds	1		

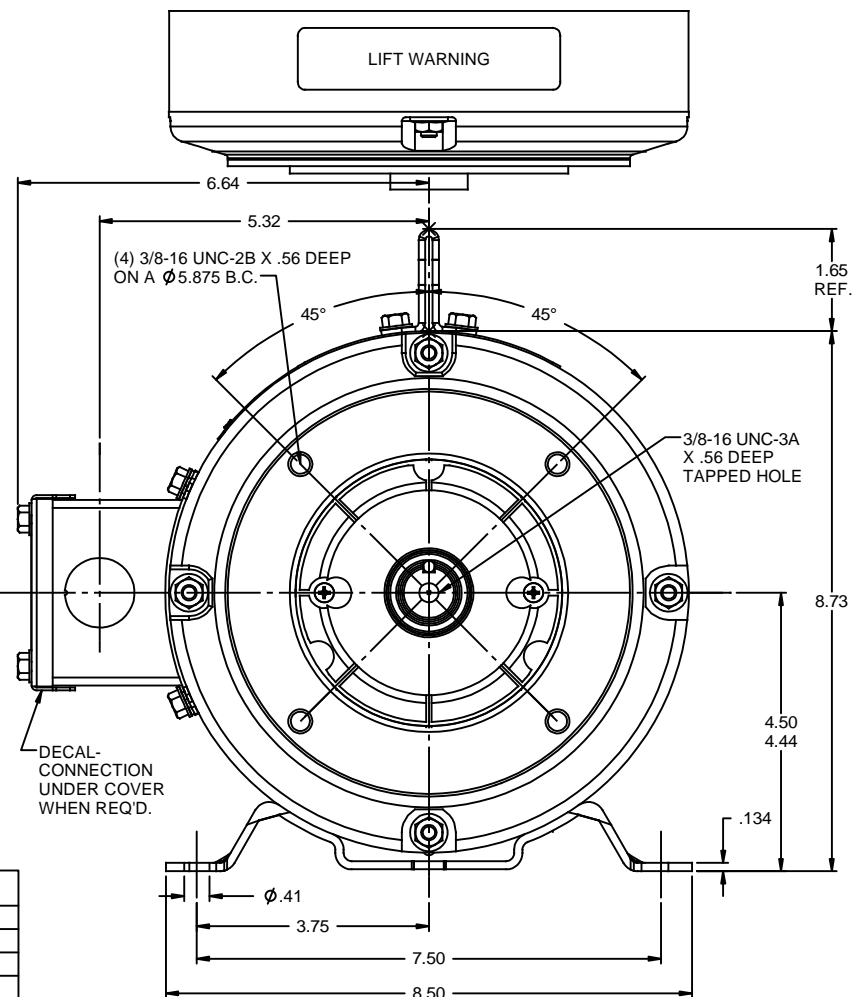
Technical Specifications

Electrical Type	Squirrel Cage Induction Run	Starting Method	Across The Line
Poles	4	Rotation	Reversible
Resistance Main	4.85 Ohms	Mounting	Rigid Base
Motor Orientation	Horizontal	Drive End Bearing	Ball
Opp Drive End Bearing	Ball	Frame Material	Rolled Steel
Shaft Type	JM	Assembly/Box Mounting	F1 ONLY
Outline Drawing	035361-850	Connection Drawing	005010.01

This is an uncontrolled document once printed or downloaded and is subject to change without notice. Date Created:06/23/2023




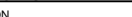
SHAFT DETAIL



DASH NO.	"C"	"AD"
800	13.82	4.13
850	14.32	4.63
900	14.82	5.13
950	15.32	5.63
1000	15.82	6.13
1050	16.32	6.63
1100	16.82	7.13

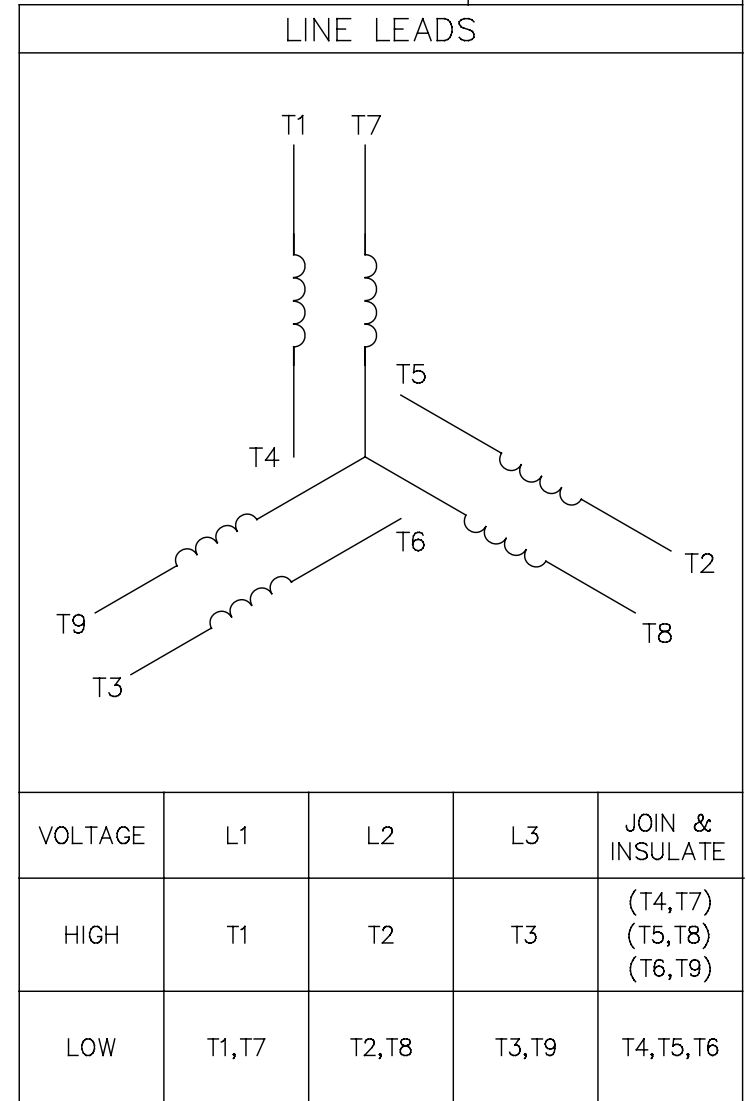
GASKETS THROUGHOUT


MAXIMUM FACE RUNOUT TO BE .004 T.I.R.
MAXIMUM PILOT ECCENTRICITY TO BE .004 T.I.R.
PERMISSIBLE SHAFT RUNOUT TO BE .002 T.I.R.

				TOLERANCES UNLESS SPECIFIED:		 REGAL-BELOIT CORPORATION		DRAWN RSK 9/22/97	
				DEC INCHES				CHK RK 9/23/97	
				X ±.1				APPR RSK 9/23/97	
				XX ±.03				SCALE 1:2	
				XXX ±.005		TITLE OUTLINE - 180JM FRAME DRIP PROOF - JM PUMP MOUNT - 3PH		REF 035326	
- UPDATED & REDRAWN IN SOLIDWORKS		LST 12/18/2009 XX XXXX ±.0005		MATL				FMF 131562	
NO REVISION		BY & DATE		CHK ANG ±1/2°		FINISH		PAGE OF	
THIRD ANGLE PROJECTION 		RFP		PREV		SIZE B		DRAWING NO 035361	
		NETWORK FILE NAME						REV	

005010-01

VIEW FROM OUTSIDE OF MOTOR AT SWITCH END.



				TOLERANCES UNLESS SPECIFIED		 Regal Beloit America, Inc.	DRAWN RDW 04/12/02	
				DEC.	INCHES		CHK	
				.X	±.1		APPD	
				.XX	±.01		SCALE 1=1	
				.XXX	±.005	TITLE EXTERNAL WIRING DIAGRAM 3 PHASE W/O PROTECTOR	REF FIG.2-51	
A	UPDATED TO REGAL LOGO	SAJ 06/26/15	AJY	.XXXX	±.0005		FMF	
NO.	REVISION	BY & DATE	CHK	ANG	±1/2"	FINISH	PREV	
THIS DRAWING IN DESIGN AND DETAIL IS OUR PROPERTY AND MUST NOT BE USED EXCEPT IN CONNECTION WITH OUR WORK ALL RIGHTS OF DESIGN AND INVENTION ARE RESERVED THIS IS AN ELECTRONICALLY GENERATED DOCUMENT - DO NOT SCALE THIS PRINT				RFP	04/12/02	CAD FILE	00501001	SIZE
				DIST	BRF-NLV			A
							DRAWING NO.	
							005010-01	
							REV.	
							A	