

PRODUCT INFORMATION PACKET



Model No: EX141180.00

Catalog No: EX141180.00

EX141180.00..10/7.5HP..1755/1465RPM.215TZ.TEFC.208-230/460//190/380V.3PH.60/50HZ.CONT.40C.1.15SF.RI
GID.....

Regal and Leeson are trademarks of Regal Rexnord Corporation or one of its affiliated companies.

©2023 Regal Rexnord Corporation, All Rights Reserved. MC017097E





Nameplate Specifications

Phase	3	Output HP	10 & 7.50 Hp
Output KW	7.5 & 5.6 kW	Voltage	208-230/460 & 190/380 V
Speed	1755 & 1465 rpm	Service Factor	1.15 & 1.15
Frame	215TZ	Enclosure	Totally Enclosed Fan Cooled
Thermal Protection	No Protection	Efficiency	89.5 & 91 %
Ambient Temperature	40 °C	Frequency	60 & 50 Hz
Current	28-26/13 & 23/11.5 A	Power Factor	81
Duty	Continuous	Insulation Class	F
Design Code	B	KVA Code	G
Drive End Bearing Size	6307	Opp Drive End Bearing Size	6206
UL	Recognized	CSA	Y
CE	N	IP Code	43
Number of Speeds	1		

Technical Specifications

Electrical Type	Squirrel Cage Inverter Rated	Starting Method	Line Or Inverter
Poles	4	Rotation	Reversible
Resistance Main	1.05 Ohms	Mounting	Rigid Base
Motor Orientation	Horizontal	Drive End Bearing	Ball
Opp Drive End Bearing	Ball	Frame Material	Rolled Steel
Shaft Type	Single Special Extension	Assembly/Box Mounting	F1 ONLY
Inverter Load	CONSTANT 10:1		
Outline Drawing	609-0008	Connection Drawing	A-EE7308-LE

This is an uncontrolled document once printed or downloaded and is subject to change without notice. Date Created:06/22/2023

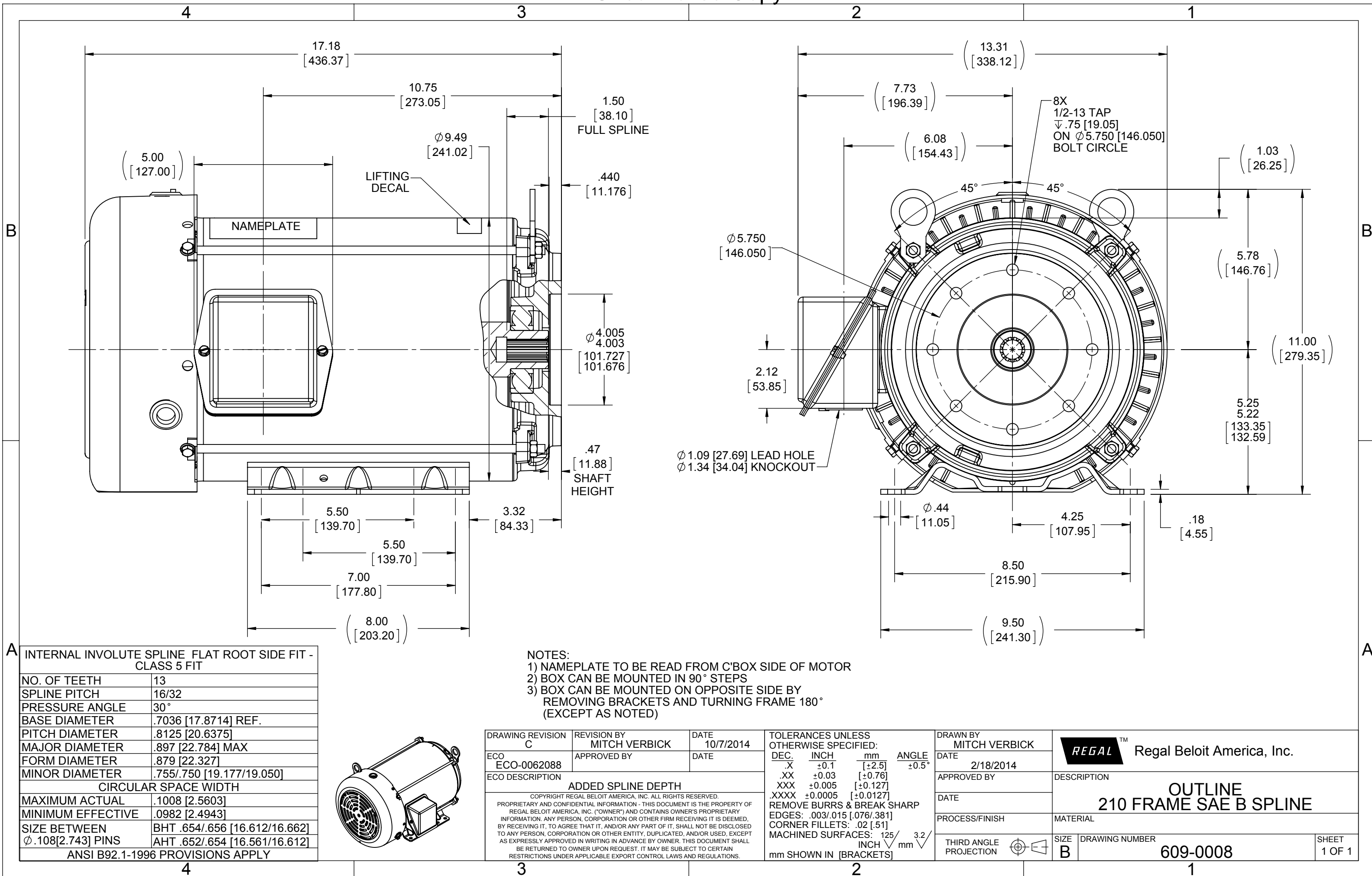


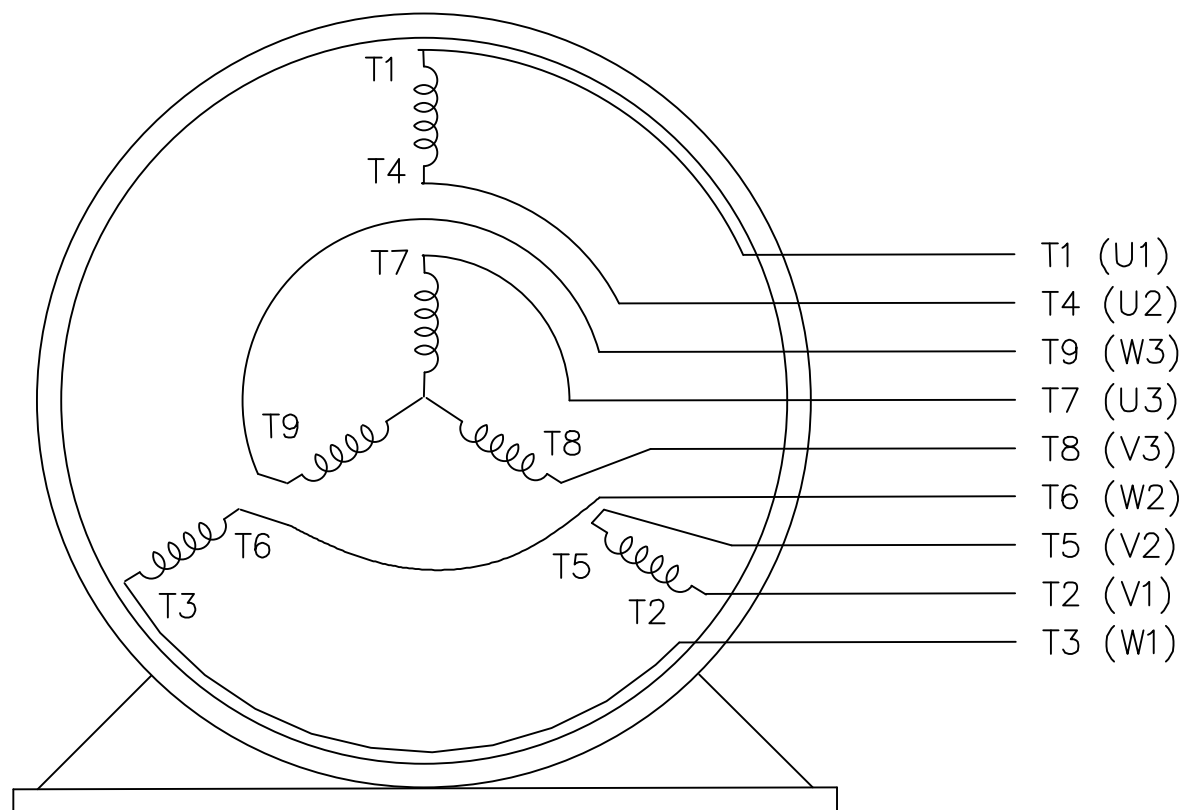
Diagram illustrating a quantum circuit with 9 qubits (T1 to T9) and their connections to L1, L2, and L3. The qubits are grouped into three sets: (U1) T1, (V1) T2, (W1) T3; (U2) T4, (U3) T7; (V2) T5, (V3) T8; (W2) T6, (W3) T9. The connections are as follows: T1 is connected to L1, T2 to L2, and T3 to L3. T4 and T7 are connected to a single point. T5 and T8 are connected to a single point. T6 and T9 are connected to a single point.

The diagram illustrates a 3-to-1 multiplexer structure. It consists of three 2-to-1 multiplexers arranged vertically. Each 2-to-1 multiplexer has two inputs on the left and one output on the right. The inputs are labeled as follows:

- Top 2-to-1 multiplexer: Inputs are (U1) T1 and (U3) T7. Output is L1.
- Middle 2-to-1 multiplexer: Inputs are (V1) T2 and (V3) T8. Output is L2.
- Bottom 2-to-1 multiplexer: Inputs are (W1) T3 and (W3) T9. Output is L3.

Below these, there are three more inputs that are not connected to any multiplexer:


- (U2) T4
- (V2) T5
- (W2) T6



VIEW OF TERMINAL END

REF.
WINDING DIAGRAM

T8Y, T2Y, T2BL, T4BX, T2EC, T2G
T6BZ, T2B, T6BL, T4AV, T6B, T4B

				TOLERANCES UNLESS SPECIFIED		 ELECTRIC MOTORS GEARMOTORS AND DRIVES	DRAWN HLB 04-29-2002			
				DEC.	INCHES		CHK ML 05-03-2002			
				.X	±.1		APPD GK 05-03-2002			
				.XX	±.01		SCALE 1=1			
2	ADDED IEC NOTATIONS... (U1), (V1) ETC. (MU105786)	REP 01-11-2012	DR	.XXX	±.005	TITLE CONNECTION DIAGRAM 3ø – DUAL VOLTAGE MOTOR	REF			
1	NEW DRAWING	HLB 05-03-2002	ML	.XXXX	±.0005	MAT'L.	FMF			
NO.	REVISION	BY & DATE	CHK	ANG	±1/2"	FINISH	PREV			
THIS DRAWING IN DESIGN AND DETAIL IS OUR PROPERTY AND MUST NOT BE USED EXCEPT IN CONNECTION WITH OUR WORK ALL RIGHTS OF DESIGN AND INVENTION ARE RESERVED THIS IS AN ELECTRONICALLY GENERATED DOCUMENT – DO NOT SCALE THIS PRINT				RFP		CAD FILE EE7308-LE	SIZE	DRAWING NO.	PAGE OF	REV.
				DIST LB-WP			A	EE7308-LE	2	