

# PRODUCT INFORMATION PACKET



Model No: EX132004.00

Catalog No: EX132004.00

EX132004.00..3HP..1800/1500RPM.182TCZ.ODP.220/380/440V.3PH.60/50HZ.CONT.40C.1.15SF.ROUND.....

...

Regal and Leeson are trademarks of Regal Rexnord Corporation or one of its affiliated companies.

©2023 Regal Rexnord Corporation, All Rights Reserved. MC017097E





### Nameplate Specifications

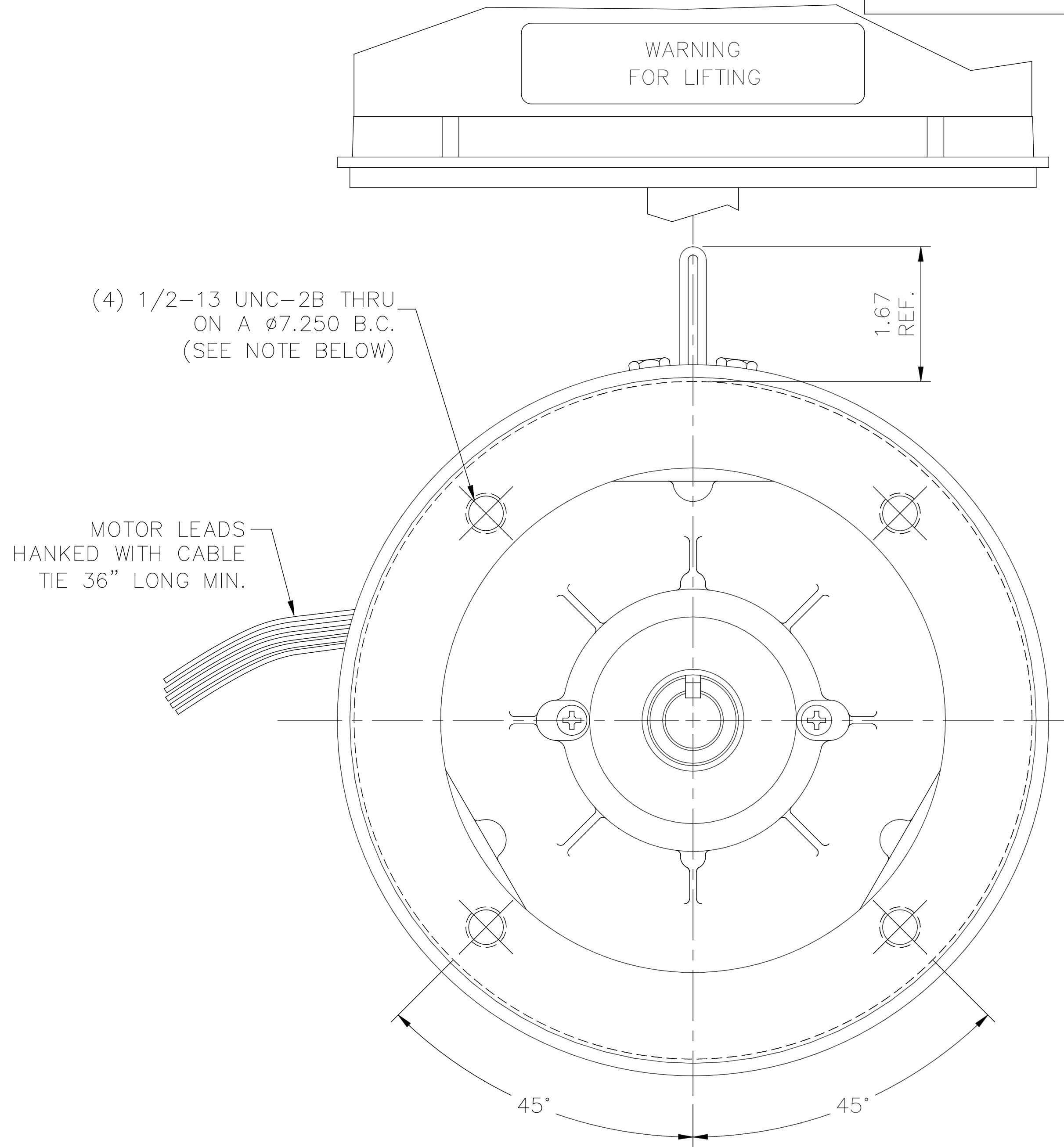
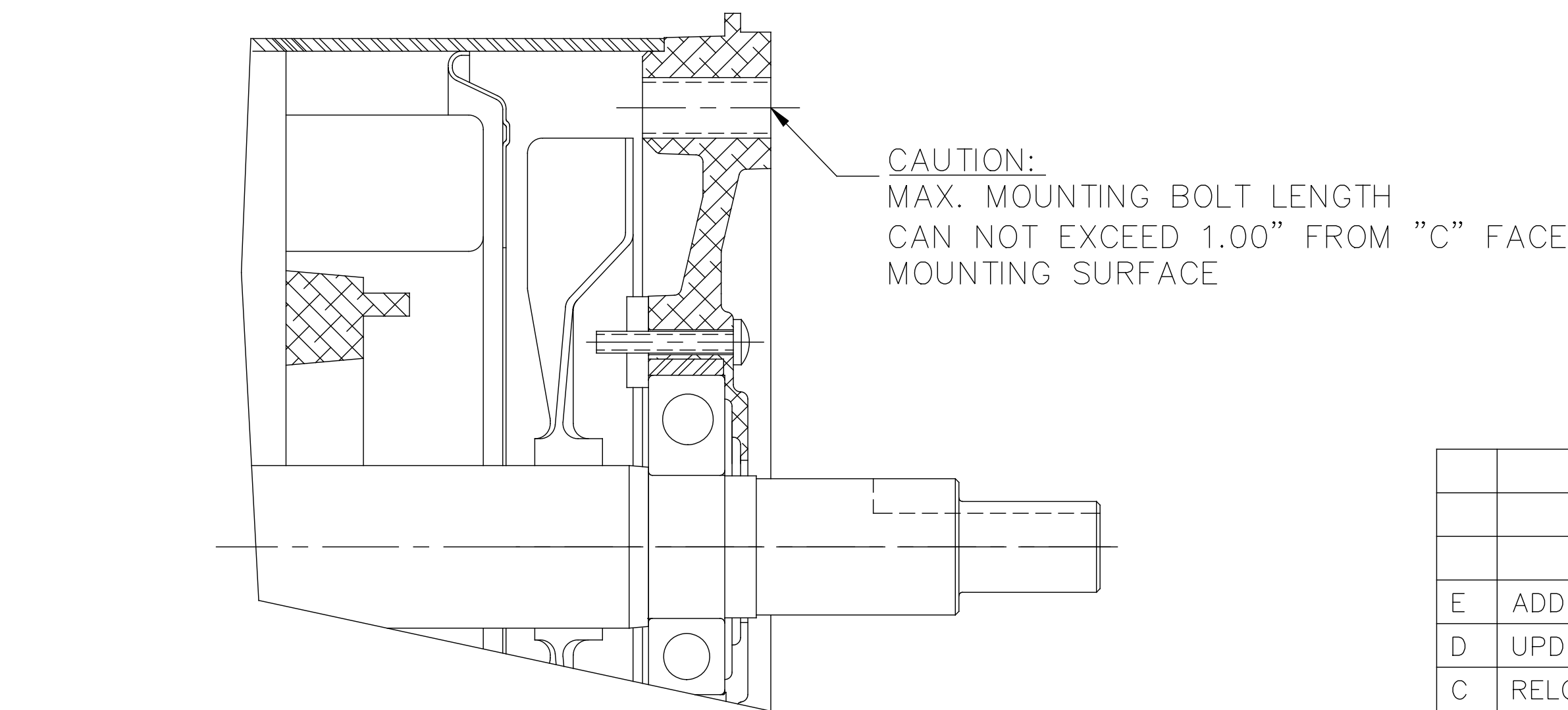
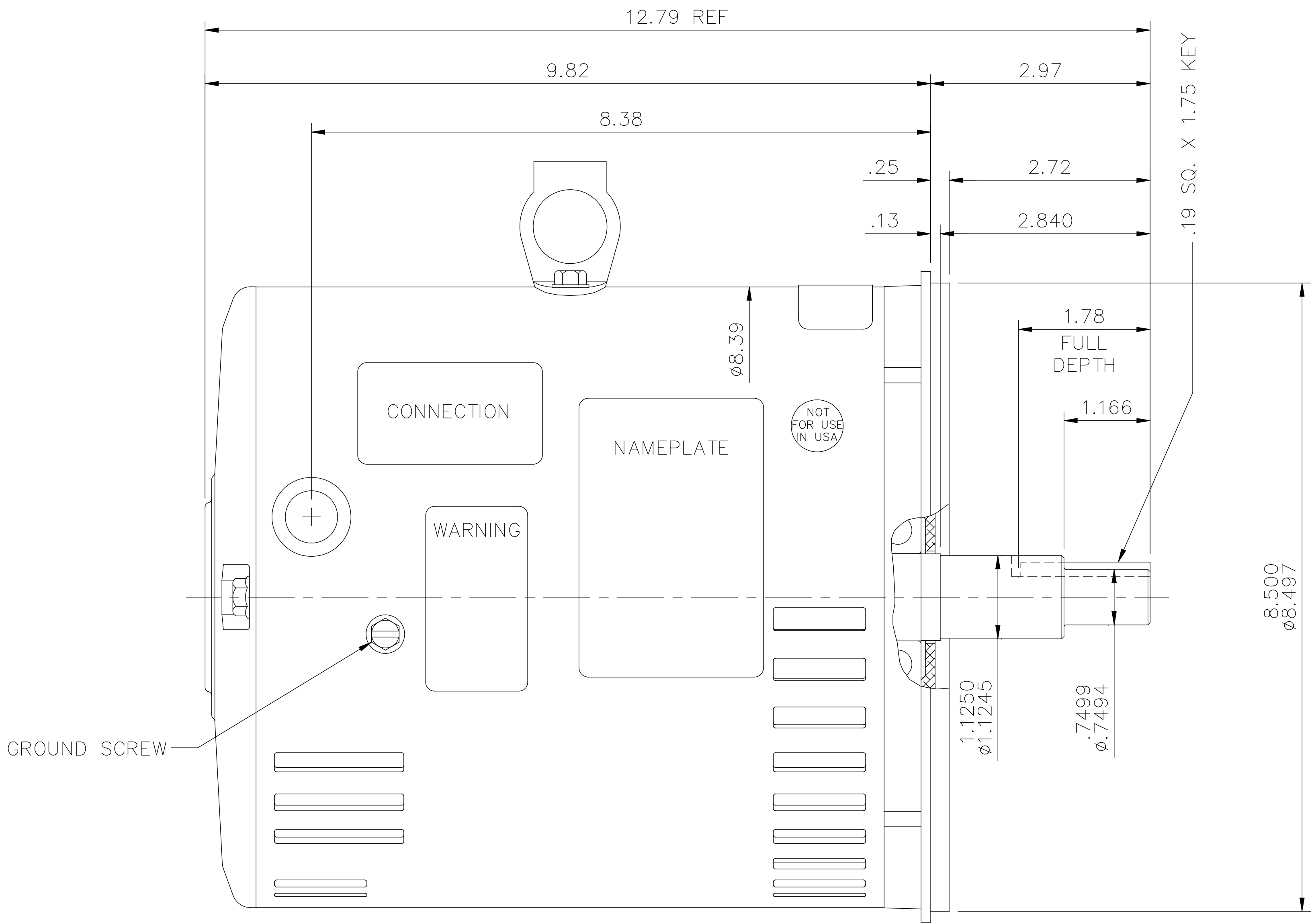
Phase	3	Output HP	3 & 3 Hp
Output KW	2.2 & 2.2 kW	Voltage	220/380/440 & 220/380/440 V
Speed	1725 & 1425 rpm	Service Factor	1.15 & 1.15
Frame	182TCZ	Enclosure	Drip Proof
Thermal Protection	No Protection	Ambient Temperature	40 °C
Frequency	60 & 50 Hz	Current	8/4.6/4 & 8.2/4.7/4.1 A
Duty	Continuous	Insulation Class	F
Design Code	B	KVA Code	J
UL	Recognized	CSA	Y
CE	N	IP Code	22
Number of Speeds	1		

### Technical Specifications

Electrical Type	Squirrel Cage Induction Run	Starting Method	Across The Line
Poles	4	Rotation	Reversible
Resistance Main	1.5 Ohms	Mounting	Round
Motor Orientation	Horizontal	Drive End Bearing	Ball
Opp Drive End Bearing	Ball	Frame Material	Rolled Steel
Shaft Type	Single Special Extension	Assembly/Box Mounting	F1 ONLY
Outline Drawing	OL132004	Connection Drawing	005381.01


This is an uncontrolled document once printed or downloaded and is subject to change without notice. Date Created:06/22/2023

OL132004

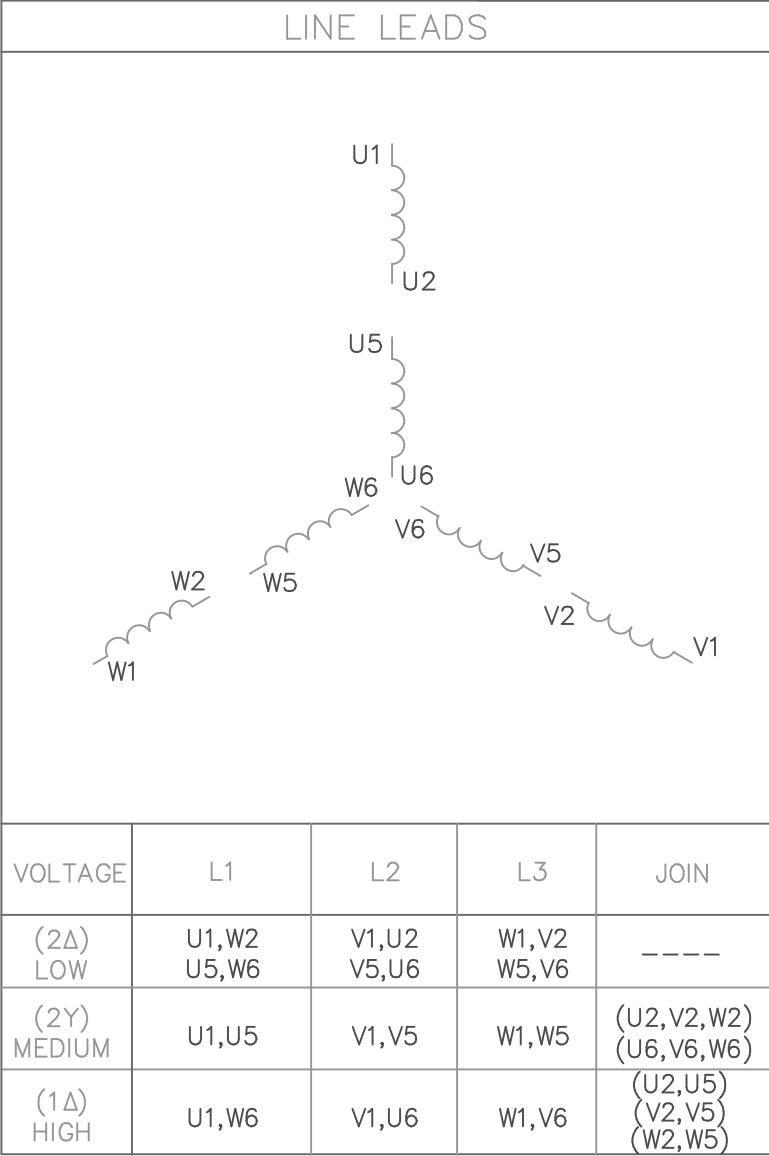
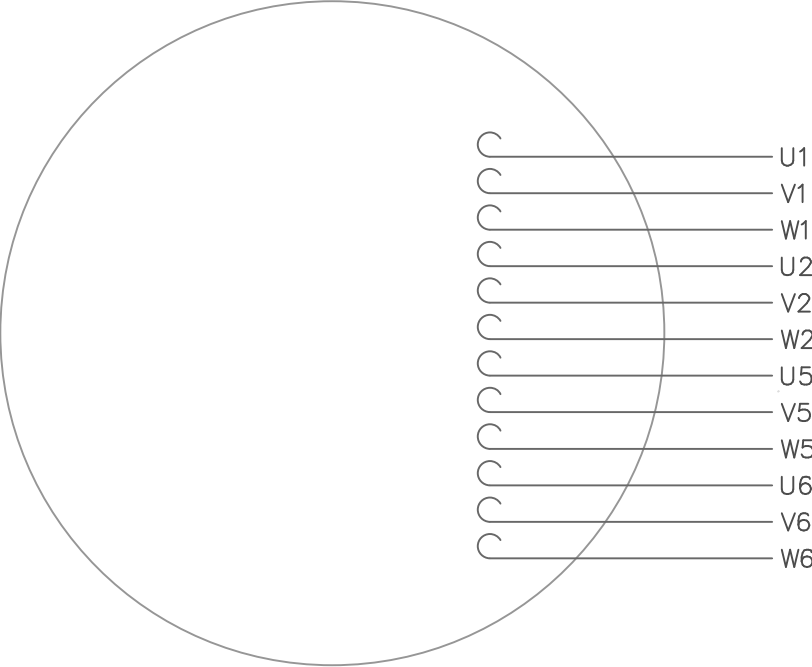


GASKETS THROUGHOUT  
MAXIMUM FACE RUNOUT TO BE .004 T.I.R.  
MAXIMUM PILOT ECCENTRICITY TO BE .004 T.I.R.  
PERMISSIBLE SHAFT RUNOUT TO BE .002 T.I.R.

ORACLE  
REV 003

			TOLERANCES UNLESS SPECIFIED			ELECTRIC MOTORS GEARMOTORS AND DRIVES			DRAWN LST 3/5/04		
			DEC.	INCHES					CHK RW 3/9/04		
			.X	±.1					APPD KH 3/9/04		
E	ADDED "NOT FOR USE IN USA" DECAL ECO 0102230	GWS 5/13/16	.XX	±.03	TITLE OUTLINE— 182TCZ FRAME DRIP PROOF— "C" FACE				SCALE 1=2		
D	UPDATED PER MT2 CONVERSION ISAAC 10—0507	LST 2/2/10	.XXX	±.005					REF PR040094		
C	RELOCATED LEAD HOLE	LST 4/27/04		.XXXX ±.0005	MAT'L.				FMF		
NO.	REVISION	BY & DATE	CHK	ANG ±1/2"	FINISH				PREV		
THIS DRAWING IN DESIGN AND DETAIL IS OUR PROPERTY AND MUST NOT BE USED EXCEPT IN CONNECTION WITH OUR WORK ALL RIGHTS OF DESIGN AND INVENTION ARE RESERVED THIS IS AN ELECTRONICALLY GENERATED DOCUMENT – DO NOT SCALE THIS PRINT			RFP		CAD FILE OL132004			SIZE	DRAWING NO.		REV.
			DIST					B	OL132004		E

VIEW FROM OUTSIDE OF MOTOR AT SWITCH END.



VOLTAGE	L1	L2	L3	JOIN
(2Δ) LOW	U1,W2 U5,W6	V1,U2 V5,U6	W1,V2 W5,V6	-----
(2Y) MEDIUM	U1,U5	V1,V5	W1,W5	(U2,V2,W2) (U6,V6,W6)
(1Δ) HIGH	U1,W6	V1,U6	W1,V6	(U2,U5) (V2,V5) (W2,W5)

				TOLERANCES UNLESS OTHERWISE SPECIFIED		LEESON ELECTRIC CORPORATION				
				DECIMALS						
				.00	± .01	DRAWN GWS 2/23/96	EXT.WIRING DIAGRAM TYPE "T" W/O PROTECTOR			
				.000	± .005	CH'K'D.				
1	REDRAWN TO CURRENT STANDARDS	DBT	05/30/97	.0000	± .0005	APPR.	MAT'L. DECAL — 080590			
NO.	REVISION	BY	DATE	FRACTIONS	± 1/64	SCALE 1=1				
THIS DRAWING IN DESIGN AND DETAIL IS OUR PROPERTY AND MUST NOT BE USED EXCEPT IN CONNECTION WITH OUR WORK ALL RIGHTS OF DESIGN AND INVENTION ARE RESERVED				ANGLES	± 1/2°	REF. 005352 PG 3	FINISH		SIZE A	DRAWING NO. 005381—01
				INCH/MM		FMF	STOCK			