

# PRODUCT INFORMATION PACKET

Model No: E929M2

Catalog No: E929M2

General Purpose Motor, 25.0 HP, 3 Ph, 60 Hz, 575 V, 1800 RPM, S284T Frame, DP



Regal and are trademarks of Regal Rexnord Corporation or one of its affiliated companies.

©2022 Regal Rexnord Corporation, All Rights Reserved. MC017097E

### Nameplate Specifications

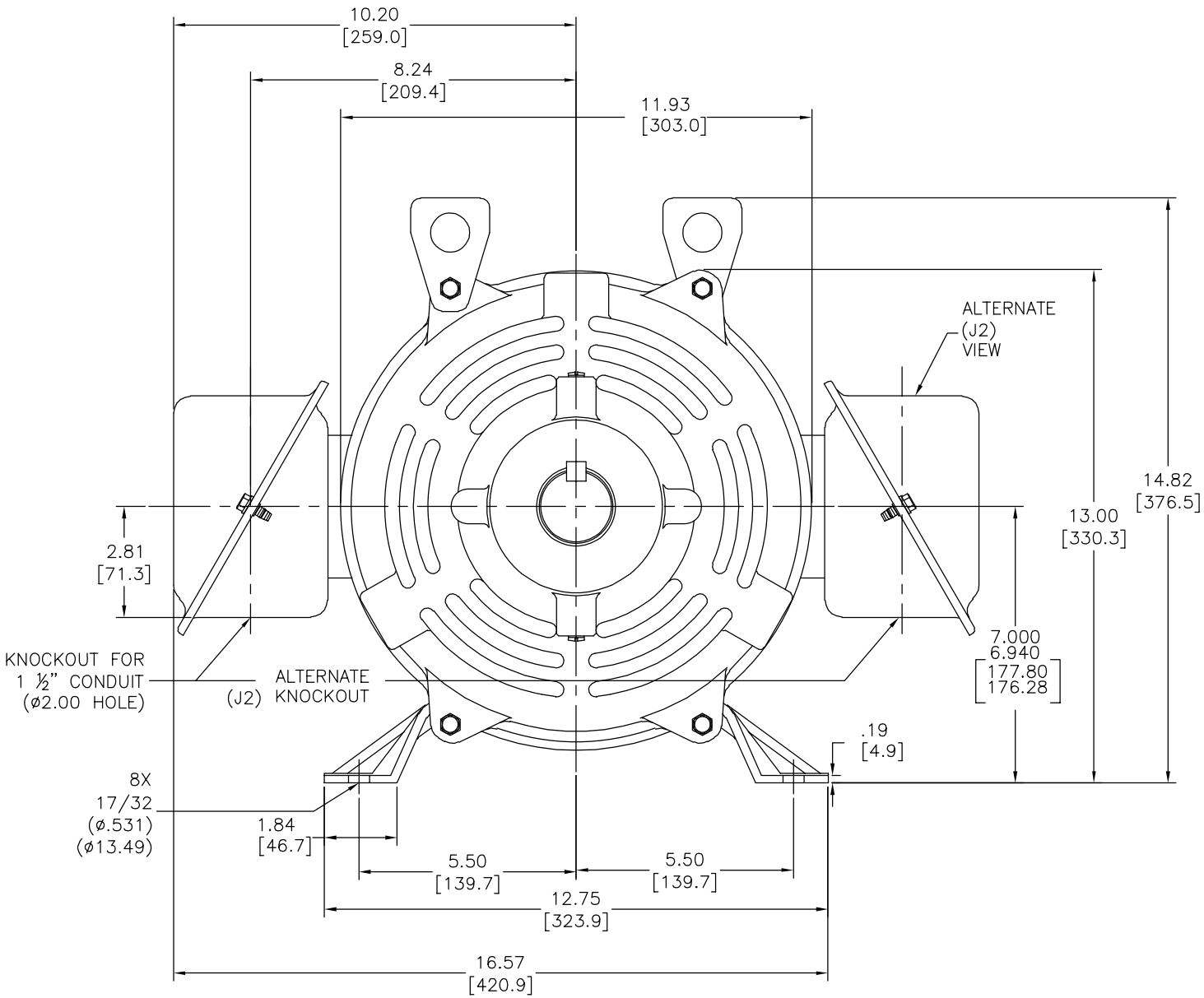
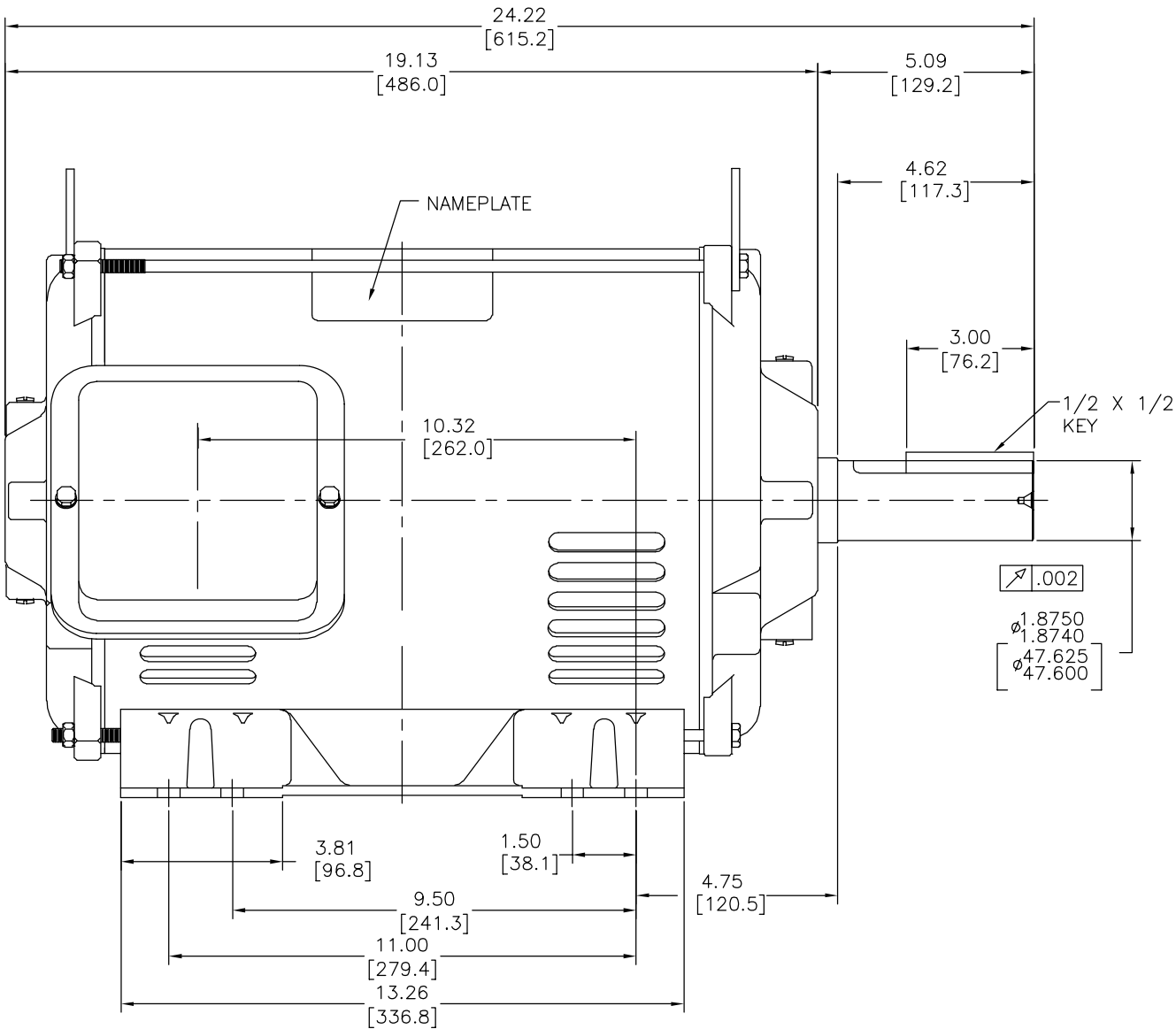
Output HP	25.0 Hp	Output KW	18.7 kW
Frequency	60 Hz	Voltage	575 V
Current	24.5 A	Speed	1765 rpm
Service Factor	1.15	Phase	3
Duty	Continuous	Insulation Class	F
Frame	S284T	Enclosure	Drip Proof
Thermal Protection	No Protection	Ambient Temperature	40 °C
UL	Recognized	CSA	Y
CE	N	Number of Speeds	1

### Technical Specifications

Electrical Type	Three Phase	Starting Method	Across The Line
Poles	4	Rotation	Counterclockwise
Mounting	Rigid Base	Drive End Bearing	Ball
Opp Drive End Bearing	Ball	Frame Material	Rolled Steel
Shaft Type	Keyed	Overall Length	24.22 in
Frame Length	14.00 in	Shaft Diameter	1.875 in
Shaft Extension	5.09 in		
Outline Drawing	18720601-001-S01	Connection Drawing	EE7300

This is an uncontrolled document once printed or downloaded and is subject to change without notice. Date Created:09/15/2022

REV	ECO	REV BY	DATE	APPD	DATE
C	ECO-0025427	T.HUANG	04-18-2012	B.C.SHEN	04-18-2012



- NOTES:
- CONDUIT BOX MAY BE ROTATED IN 90° INCREMENTS.
  - MOTOR IS SUITABLE FOR FIELD CONVERSION FROM AN F1 TO AN F2 CONDUIT BOX LOCATION.
  - MOTOR VENTILATION: AIR INTAKE THROUGH OPENINGS IN THE FACE OF EACH BRACKET AND EXHAUSTED THROUGH THE VENT SLOTS ON EACH END OF THE SHELL.

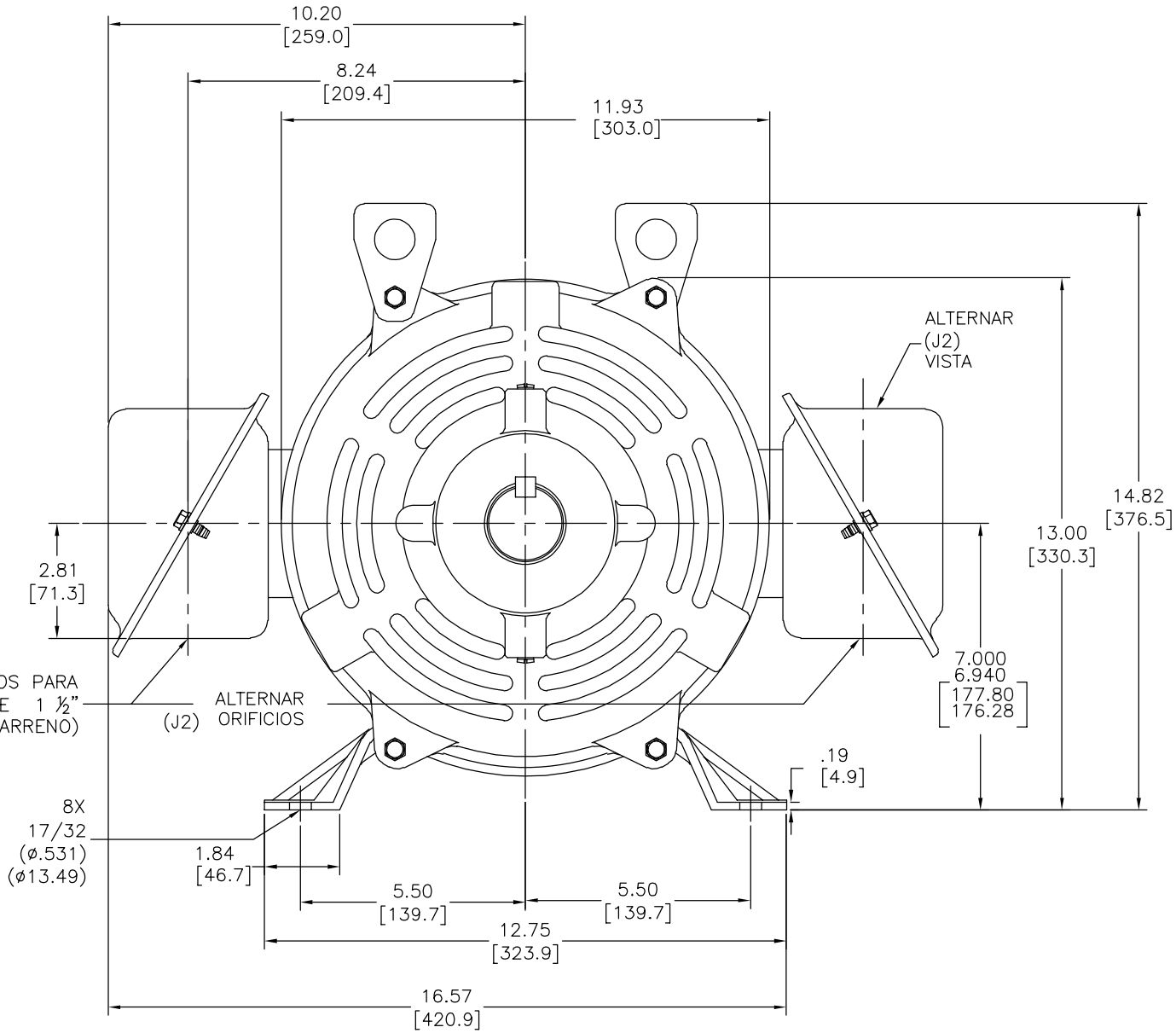
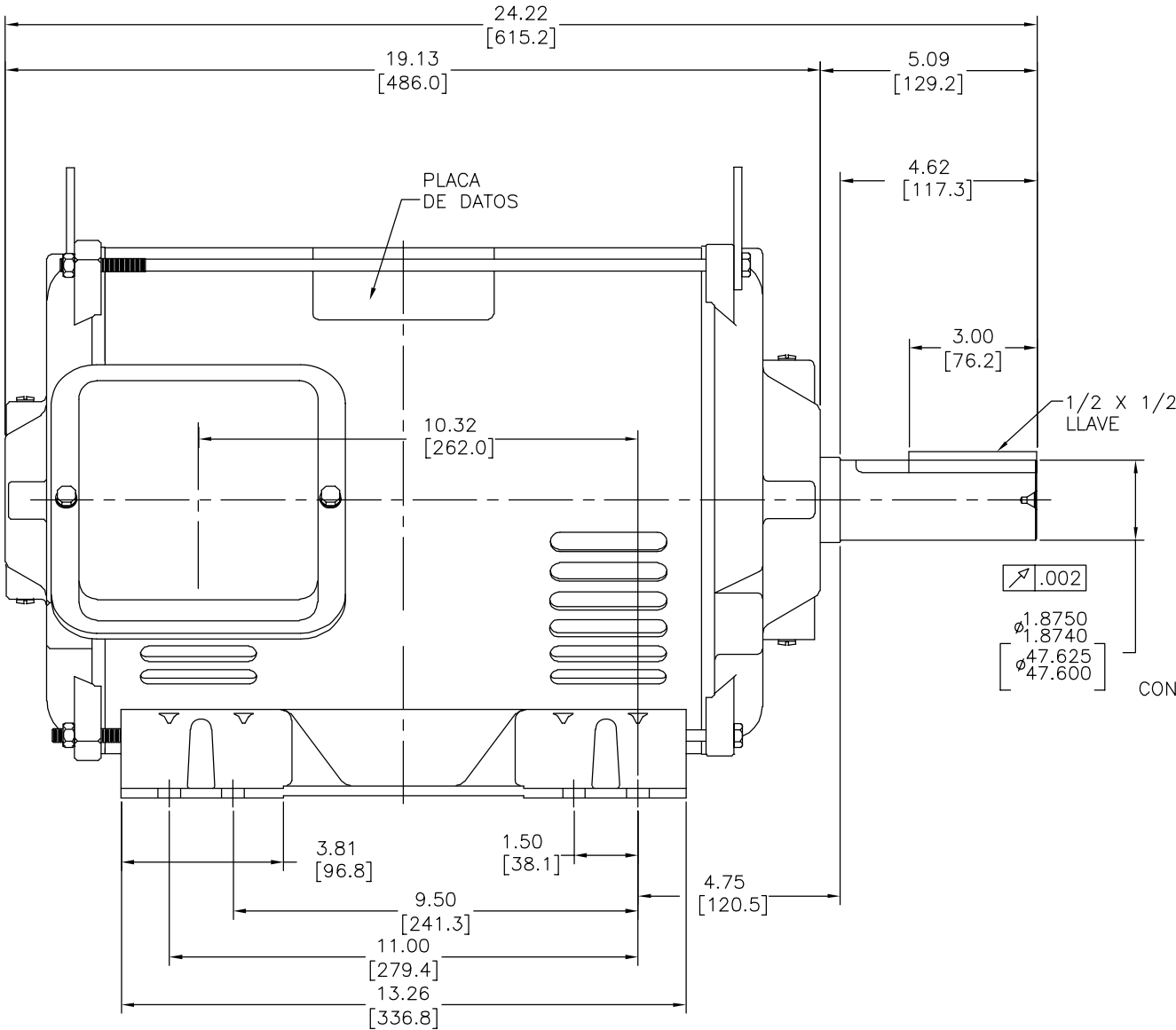
MOTOR DESCRIPTION:

3 PHASE OPEN DRIPPROOF STEEL SHELL 284T OR 286T MOUNTING.  
OTHER MOUNTING ORIENTATIONS ARE ACCEPTABLE; HOWEVER WHEN MOUNTED OTHER THAN HORIZONTAL; MOTOR WILL NOT BE DRIPPROOF AS DEFINED BY NEMA.

CERTIFICATION OF A.C. MOTORS		
CERTIFIED FOR		
SPEC. NO. _____	ORDER NO. _____	
ORDER I.D. _____	I.D. NO. _____	EMI EMI
TYPE _____	FRAME _____	H.P. _____
R.P.M. _____	VOLTS _____	PHASE _____
HERTZ _____	AMPS _____	CODE _____
REMARKS _____		
APPROVED BY _____ DATE: _____		

GEOMETRIC CHARACTERISTICS & SYMBOLS □ FLATNESS — STRAIGHTNESS ∠ ANGULARITY ⊥ PERPENDICULARITY (SQUARENESS) // PARALLELISM ○ ROUNDNESS (CIRCULARITY) ⊘ CYLINDRICITY ≡ PROFILE OF ANY SURFACE ⌒ PROFILE OF ANY LINE ↑ RUNOUT ⊕ TRUE POSITION ◎ CONCENTRICITY ≡ SYMMETRY		UNLESS OTHERWISE SPECIFIED DIM. TOLERANCES ARE AS FOLLOWS: INCH X XX XXX XXXX mm ±.1 ±.02 ±.005 ±.0005 mm ±0.5 ±0.13 ±0.013 ANG. ±.50 DEG REMOVE BURRS & BREAK SHARP EDGES: INCH .003-.015 mm 0.1-0.4 CORNER FILLETS TO: INCH .020 mm 0.5 MACHINE SURFACES: INCH 125 mm 3.2		DR BY: AJB APPD: JAS THIRD ANGLE PROJECTION EDS DATE 11-11-2011 FORMAT REV G		DESCRIPTION OUTLINE S284T/S286T ODP EE STD SIZE D DWG NO 18720601-001 SCALE NONE SHEET 1	
ASME Y14.5M 1994		METRIC DIMS. SHOWN IN [BRACKETS]		CONFIDENTIAL: THIS DRAWING AND ITS INFORMATION ARE THE EXCLUSIVE AND CONFIDENTIAL PROPERTY OF REGAL-BELOIT CORPORATION AND ARE NOT TO BE DISCLOSED, DUPLICATED, DISTRIBUTED OR OTHERWISE USED WITHOUT THE WRITTEN CONSENT OF REGAL-BELOIT CORPORATION. -ALL RIGHTS RESERVED.		REGAL-BELOIT CORPORATION	

REVISION:	ECO	REVISADO POR:	T.HUANG	FECHA:	04-18-2012	APROBADO POR:	B.C.SHEN	FECHA:	04-18-2012
C	ECO-0025427								



NOTAS:

- CAJA DE CONDUCTORES PUEDER ROTARSE EN INCREMENTOS DE 90°
- EL MOTOR ES EL ADECUADO PARA CONVERSION DE CAMPOS DESDE LA UBICACION AN F1 Y AN F2
- VENTILACION DE MOTOR: LA ENTRADA DE AIRE ES A TRAVEZ DE LOS ORIFICIOS EN LA CARA DE CADA TAPA Y EXTRAIDA A TRAVEZ DE LAS RANURAS DE VENTILACION AL FINAL DE CADA CARCAZA

DESCRIPCION DEL MOTOR:

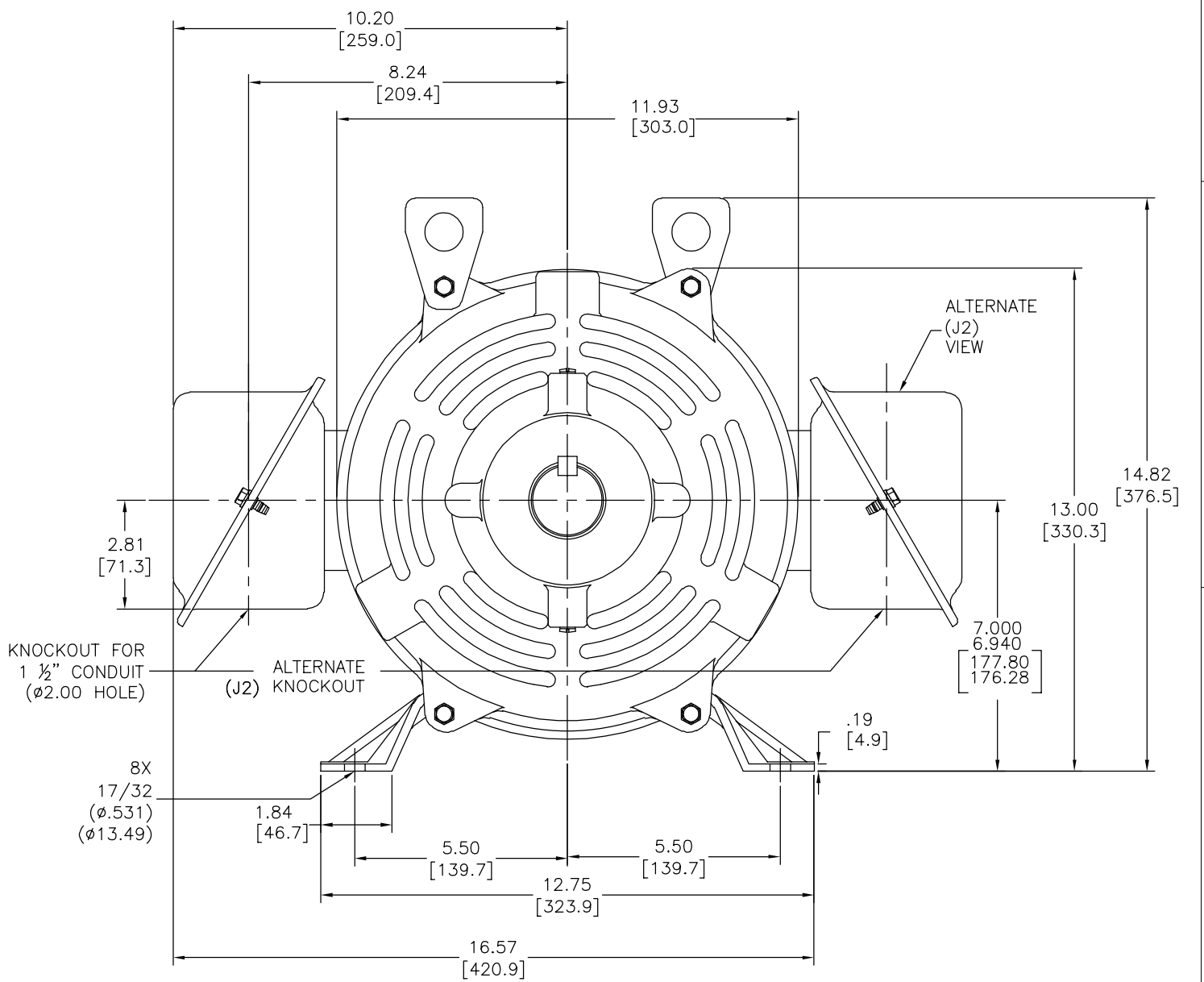
ESCUDO 284T DE ACERO A PRUEBA DE GOTEO CON 3 FASES ABIERTAS. OTRO TIPO DE OPERACIONES DE MONTAGE ES ACEPTABLE; SIN EMBARGO CUANDO SEA MONTADO DE CUALQUIER OTRA FORMA MENOS HORIZONTALMENTE NO SERA A PRUEBA DE GOTEO COMO NEMA LO DEFINE.

CERTIFICATION OF A.C. MOTORS		
CERTIFIED FOR		
SPEC. NO. _____	ORDER NO. _____	
ORDER I.D. _____	I.D. NO. _____	EMI EMI
TYPE _____	FRAME _____	H.P. _____
R.P.M. _____	VOLTS _____	PHASE _____
HERTZ _____	AMPS _____	CODE _____
REMARKS _____		
APPROVED BY _____ DATE: _____		

CARACTERISTICAS DE GEOMETRIA Y SIMBOLOS: / PLANICIDAD - RECTITUD / ANGULARIDAD L PERPENDICULARIDAD (A ESCUADRA) // PARALELISMO O REDONDEZ (CIRCULARIDAD) H CILINDRICIDAD = PERFIL DE CUALQUIER SUPERFICIE / PERFIL DE CUALQUIER LINEA + POSICION REAL © CONCENTRICIDAD = SIMETRIA	ASME Y14.5M 1994
---	------------------

A MENOS QUE SE ESPECIFIQUE DE OTRA MANERA, LAS TOLERANCIAS DE LAS DIMS, SON LAS SIGUIENTES: PULG ±.1 ±.02 ±.005 ±.0005 mm ±0.5 ±0.13 ±0.013 ANG. ±50 GRADOS ELIMINAR REBABAS Y ORILLAS FILOSAS DEL BORDE. PULG .003-.015 mm 0.1-0.4 FILETEAR ESQUINA: PULG .020 mm 0.5 MAQUINAR SUPERFICIES PULG .125 mm .32	DIMENSIONES METRICAS MOSTRADAS [PARENTESIS]
--	---

DIBUJADO POR: AUB	01-14-2004	DESCRIPCION: OUTLINE S284T/S286T ODP EE STD
APROBADO POR: JAS	01-14-2004	
TERCER ANGULO DE PROYECCION	FECHA EDS: 11-11-2011 REV. FORMATO: G	TAMAÑO: D
CONFIDENCIAL: ESTE DIBUJO Y SU INFORMACION SON PROPIEDAD DE USO EXCLUSIVO Y CONFIDENCIAL DE REGAL-BELOIT CORPORATION. Y NO DEBERAN SER REVELADOS, Duplicados, distribuidos o usarse de otra manera SIN EL CONSENTIMIENTO ESCRITO DE REGAL-BELOIT CORPORATION. -TODOS LOS DERECHOS RESERVADOS.	NUMERO DE DIBUJO: 18720601-001	ESCALA: NONE
		HOJA: 1





NOTES:

1. CONDUIT BOX MAY BE ROTATED IN 90° INCREMENTS.
2. MOTOR IS SUITABLE FOR FIELD CONVERSION FROM AN F1 TO AN F2 CONDUIT BOX LOCATION.
3. MOTOR VENTILATION: AIR INTAKE THROUGH OPENINGS IN THE FACE OF EACH BRACKET AND EXHAUSTED THROUGH THE VENT SLOTS ON EACH END OF THE SHELL.

MOTOR DESCRIPTION:

3 PHASE OPEN DRIPPROOF STEEL SHELL 284T OR 286T MOUNTING.  
OTHER MOUNTING ORIENTATIONS ARE ACCEPTABLE; HOWEVER WHEN MOUNTED OTHER  
THAN HORIZONTAL; MOTOR WILL NOT BE DRIPPROOF AS DEFINED BY NEMA.

CERTIFICATION OF A.C. MOTORS			
CERTIFIED FOR _____			
SPEC. NO. _____		ORDER NO. _____	
ORDER I.D. _____		I.D. NO. _____	
TYPE _____		EMI _____ EMI _____	
FRAME _____		H.P. _____	
R.P.M. _____		VOLTS _____	
HERTZ _____		PHASE _____	
AMPS _____		CODE _____	
REMARKS _____			
APPROVED BY _____		DATE: _____	

形位公差 ▽ 平面度 一 直线度 ∠ 倾斜度 ⊥ 垂直度 〓 平行度 R 圆度 φ 圆柱度 内圆角 线轮廓度 圆跳动 位置度 同轴度 ⊙ 对称度	除另有注明 尺寸公差如下:  英寸 $\pm 0.1$ $\pm 0.02$ $\pm 0.005$ $\pm 0.005$ 毫米 $\pm 0.5$ $\pm 0.13$ $\pm 0.013$ 角度 $\pm 50$ 度 清理毛刺和尖棱 英寸 .003-.015 毫米 0.1-0.4 内圆角 英寸 .020 毫米 0.5 表面粗糙度 英寸 125 微米 3.2  米制尺寸显示在 [ ]	绘图: AJB 01-14-2004 批准: JAS 01-14-2004 第三角投影  图规格发布日期 11-11-2011 图规格格式版本 G 机密: 本图纸及相关信息所有权归REGAL-BELOIT CORPORATION. 未经REGAL-BELOIT CORPORATION书面授权, 不得泄露、 复制、传播或作其他用途。一版权所有	 REGAL-BELOIT CORPORATION 名称: OUTLINE S284T/S286T ODP EE STD 图幅: D 图号: 18720601-001 比例: NONE 页号: 1	
		ASME Y14.5M 1994		

THREE PHASE - SINGLE VOLTAGE  
MOTOR - CONDUIT BOX @ 'A'

TO REVERSE ROTATION:  
INTERCHANGE ANY TWO LINE  
LEAD CONNECTIONS

TERMINAL BLOCK WHEN SPECIFIED

IF MOTOR HAS 9 LEADS

T1(U1) T1(U1) T1(U1) → L1

T2(V1) T2(V1) T2(V1) → L2

T3(W1) T3(W1) T3(W1) → L3

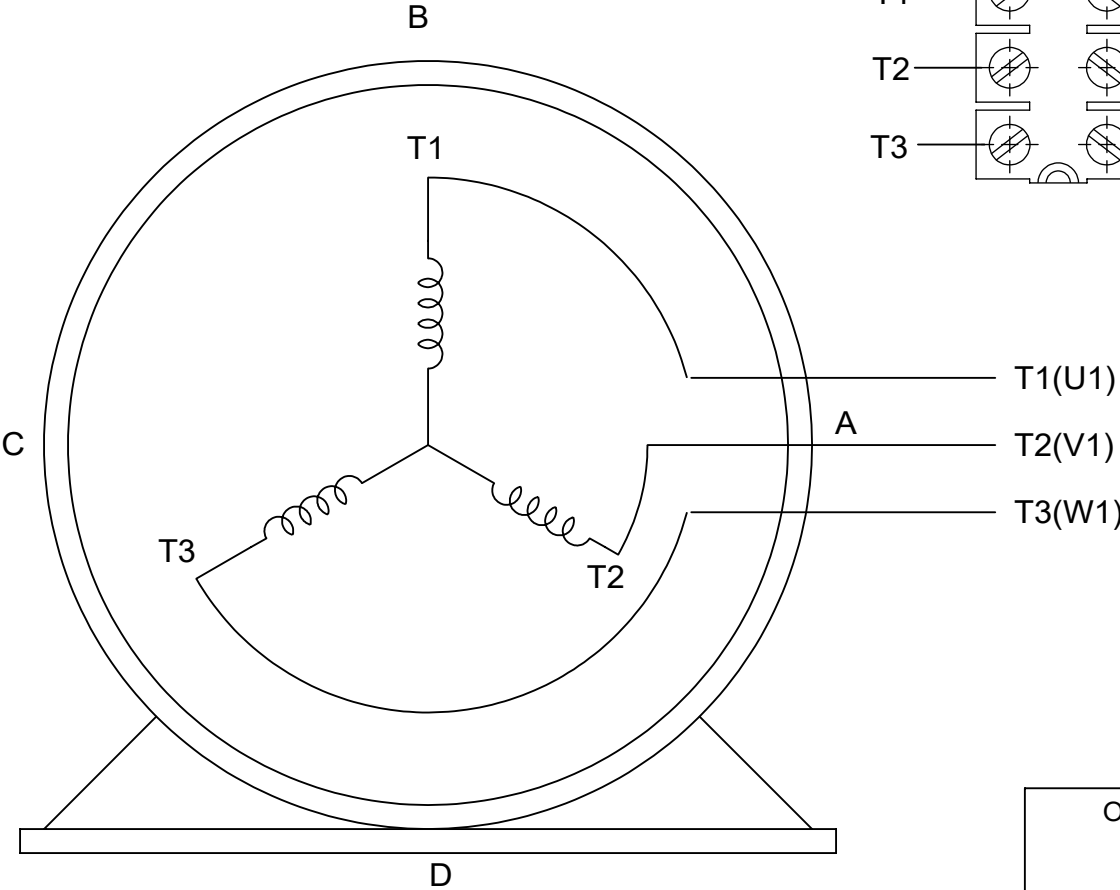
IF MOTOR HAS 6 LEADS

T1(U1) T1(U1) → L1

T2(V1) T2(V1) → L2

T3(W1) T3(W1) → L3

A-9806 DECAL



VIEW OF TERMINAL END

OPTIONAL CORD CONNECTION	
L1	WHITE
L2	RED
L3	BLACK

DRAWING REVISION AC	REVISION BY BS	REV DATE/© DATE 26/07/2022
REQUEST NUMBER CR-0010402	APPROVED BY SN	DATE 26/07/2022
REQUEST NUMBER DESCRIPTION DRAWING UPDATED		
COPYRIGHT (PER REVISION DATE) REGAL BELOIT AMERICA, INC. ALL RIGHTS RESERVED. PROPRIETARY AND CONFIDENTIAL INFORMATION - THIS DOCUMENT IS THE PROPERTY OF REGAL BELOIT AMERICA, INC. ("OWNER") AND CONTAINS OWNER'S PROPRIETARY INFORMATION. ANY PERSON, CORPORATION OR OTHER FIRM RECEIVING IT IS DEEMED, BY RECEIVING IT, TO AGREE THAT IT, AND/OR ANY PART OF IT, SHALL NOT BE DISCLOSED TO ANY PERSON, CORPORATION OR OTHER ENTITY, DUPLICATED, AND/OR USED, EXCEPT AS EXPRESSLY APPROVED IN WRITING IN ADVANCE BY OWNER. THIS DOCUMENT SHALL BE RETURNED TO OWNER UPON REQUEST. IT MAY BE SUBJECT TO CERTAIN RESTRICTIONS UNDER APPLICABLE EXPORT CONTROL LAWS AND REGULATIONS.		

PRIMARY DIMENSIONS ARE INCH  
mm DIMENSIONS IN [BRACKETS]  
ARE FOR REFERENCE ONLY

DRAWN BY DA
DATE 03-26-1993
APPROVED BY TB
DATE 03-26-1993
REFERENCE
THIRD ANGLE PROJECTION

Regal Beloit America, Inc.	
DESCRIPTION CONNECTION DIAGRAM EXTERNAL - SINGLE VOLTAGE - 3Ø MOTOR	
MATERIAL	PROCESS/FINISH
SIZE A	DRAWING NUMBER EE7300
SHEET 1 OF 1	