

# PRODUCT INFORMATION PACKET



Model No: E927M2  
Catalog No: E927M2

General Purpose Motor, 15.0 HP, 3 Ph, 60 Hz, 575 V, 1800 RPM, S254T Frame, DP



Regal and Century are trademarks of Regal Rexnord Corporation or one of its affiliated companies.  
©2022 Regal Rexnord Corporation, All Rights Reserved. MC017097E





### Nameplate Specifications

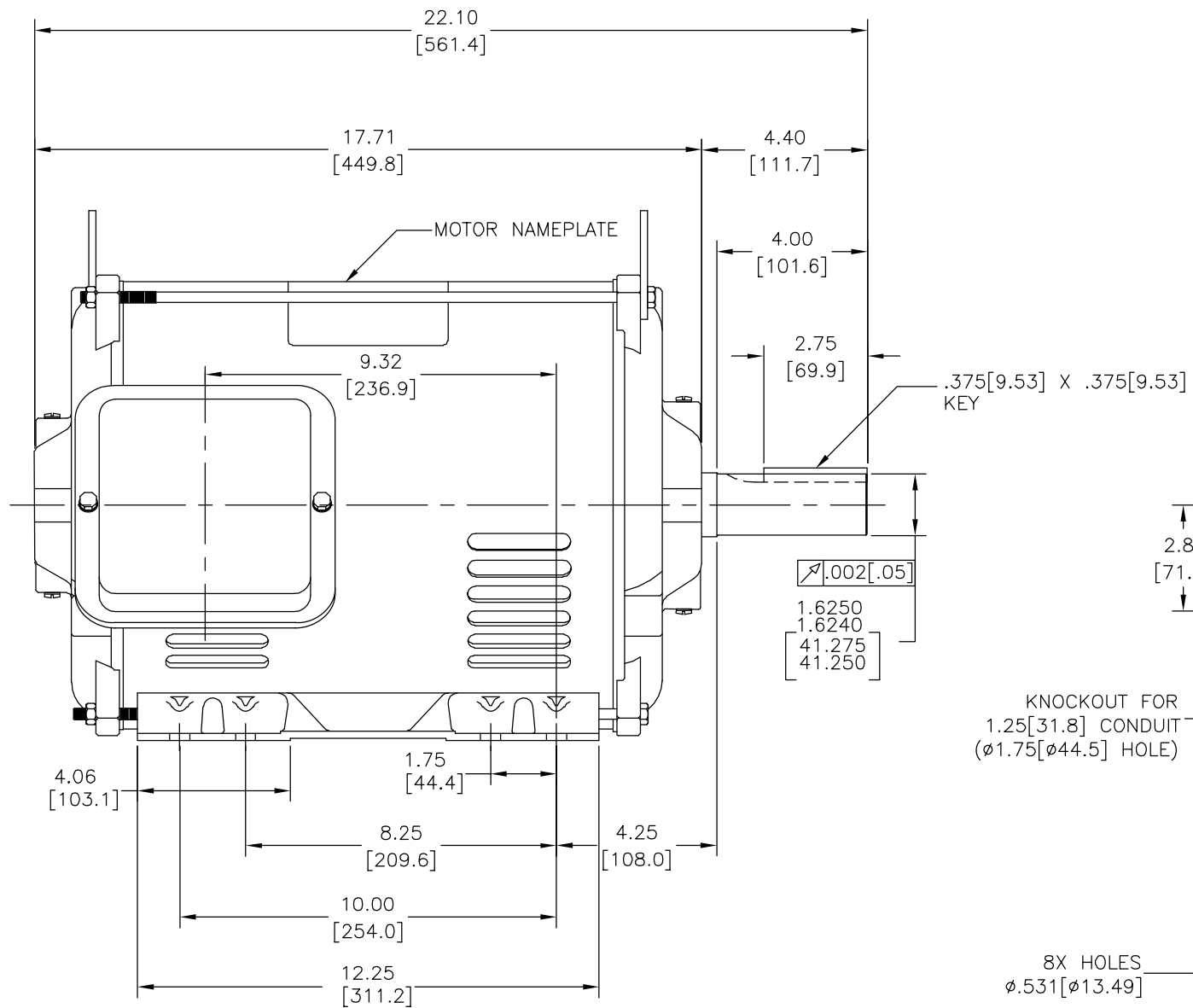
Output HP	15.0 Hp	Output KW	11.2 kW
Frequency	60 Hz	Voltage	575 V
Current	15.1 A	Speed	1770 rpm
Service Factor	1.15	Phase	3
Efficiency	93 %	Duty	Continuous
Insulation Class	F	Frame	S254T
Enclosure	Drip Proof	Thermal Protection	No Protection
Ambient Temperature	40 °C	UL	Recognized
CSA	Y	CE	N
Number of Speeds	1		

### Technical Specifications

Electrical Type	Three Phase	Starting Method	Across The Line
Poles	4	Rotation	Counterclockwise
Mounting	Rigid Base	Drive End Bearing	Ball
Opp Drive End Bearing	Ball	Frame Material	Rolled Steel
Shaft Type	Keyed	Overall Length	22.10 in
Frame Length	13.00 in	Shaft Diameter	1.625 in
Shaft Extension	4.4 in		
Outline Drawing	E927M2-S01	Connection Drawing	EE7300

This is an uncontrolled document once printed or downloaded and is subject to change without notice. Date Created:11/29/2022

REV	ECO	REV BY	DATE	APPD	DATE
A	ECO-0026192	I.LOPEZ	08-23-2012	H.SANCHEZ	08-23-2012

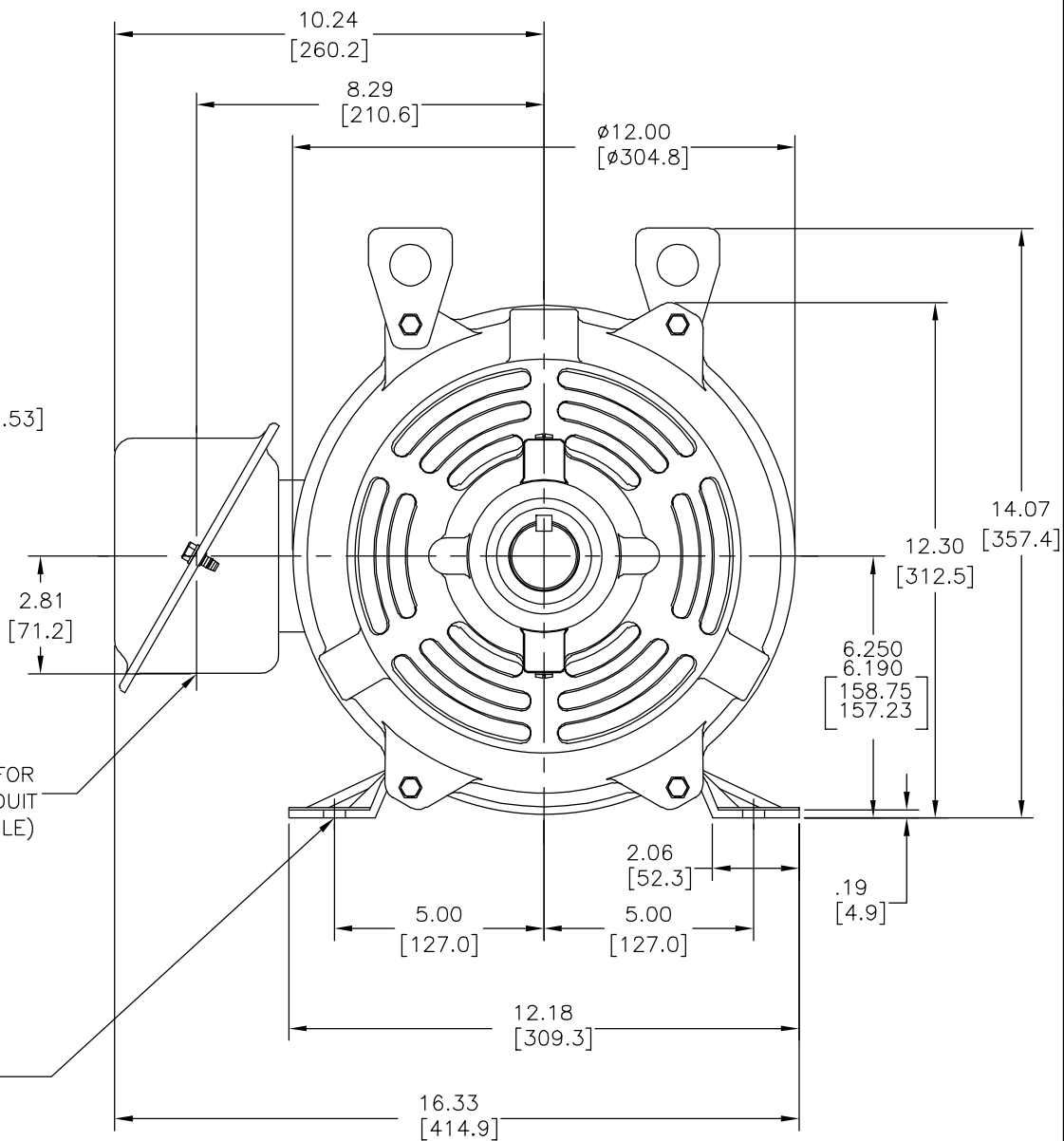


## NOTES:

1. CONDUIT BOX MAY BE ROTATED IN 90° INCREMENTS.
2. MOTOR IS SUITABLE FOR FIELD CONVERSION FROM AN F1 TO AN F2 CONDUIT BOX LOCATION.
3. MOTOR VENTILATION: AIR INTAKE THROUGH OPENINGS IN THE FACE OF EACH BRACKET AND EXHAUSTED THROUGH THE VENT SLOTS ON EACH END OF THE SHELL.

KNOCKOUT FOR  
1.25[31.8] CONDUIT  
(Ø1.75[Ø44.5] HOLE)

8X HOLES  
Ø.531[Ø13.49]



## MOTOR DESCRIPTION:

3 PHASE OPEN DRIPPROOF STEEL SHELL 254T OR 256T MOUNTING.  
OTHER MOUNTING ORIENTATIONS ARE ACCEPTABLE; HOWEVER WHEN MOUNTED OTHER THAN HORIZONTAL; MOTOR WILL NOT BE DRIPPROOF AS DEFINED BY NEMA.

GEOMETRIC CHARACTERISTICS & SYMBOLS  
□ FLATNESS  
— STRAIGHTNESS  
∠ ANGULARITY  
⊥ PERPENDICULARITY (SQUARENESS)  
// PARALLELISM  
○ ROUNDNESS (CIRCULARITY)  
⌀ CYLINDRICITY  
△ PROFILE OF ANY SURFACE  
∩ PROFILE OF ANY LINE  
↑ RUNOUT  
⊕ TRUE POSITION  
◎ CONCENTRICITY  
≡ SYMMETRY

ASME Y14.5M 1994

UNLESS OTHERWISE SPECIFIED  
DIM. TOLERANCES ARE AS FOLLOWS:  
INCH X XX XXX XXXX  
mm ±0.1 ±0.02 ±0.005 ±0.0005  
mm ±0.5 ±0.13 ±0.013  
ANG. ±.50 DEG  
REMOVE BURRS & BREAK SHARP EDGES:  
INCH .003-.015 mm 0.1-0.4  
CORNER FILLETS TO:  
INCH .020 mm 0.5  
MACHINE SURFACES:  
INCH 125 mm 3.2  
METRIC DIMS. SHOWN IN [BRACKETS]

## DR BY:

I.LOPEZ

08-23-2012

## APPD:

D.JAMORA

08-23-2012

## THIRD ANGLE PROJECTION



EDS DATE 11-11-2011

FORMAT REV G

CONFIDENTIAL: THIS DRAWING AND ITS INFORMATION ARE THE EXCLUSIVE AND CONFIDENTIAL PROPERTY OF REGAL-BELOIT CORPORATION AND ARE NOT TO BE DISCLOSED, DUPLICATED, DISTRIBUTED OR OTHERWISE USED WITHOUT THE WRITTEN CONSENT OF REGAL-BELOIT CORPORATION. -ALL RIGHTS RESERVED.



REGAL-BELOIT CORPORATION

## DESCRIPTION

MODEL-IHP  
OUTLINE

## SIZE

C

## DWG NO

E927M2

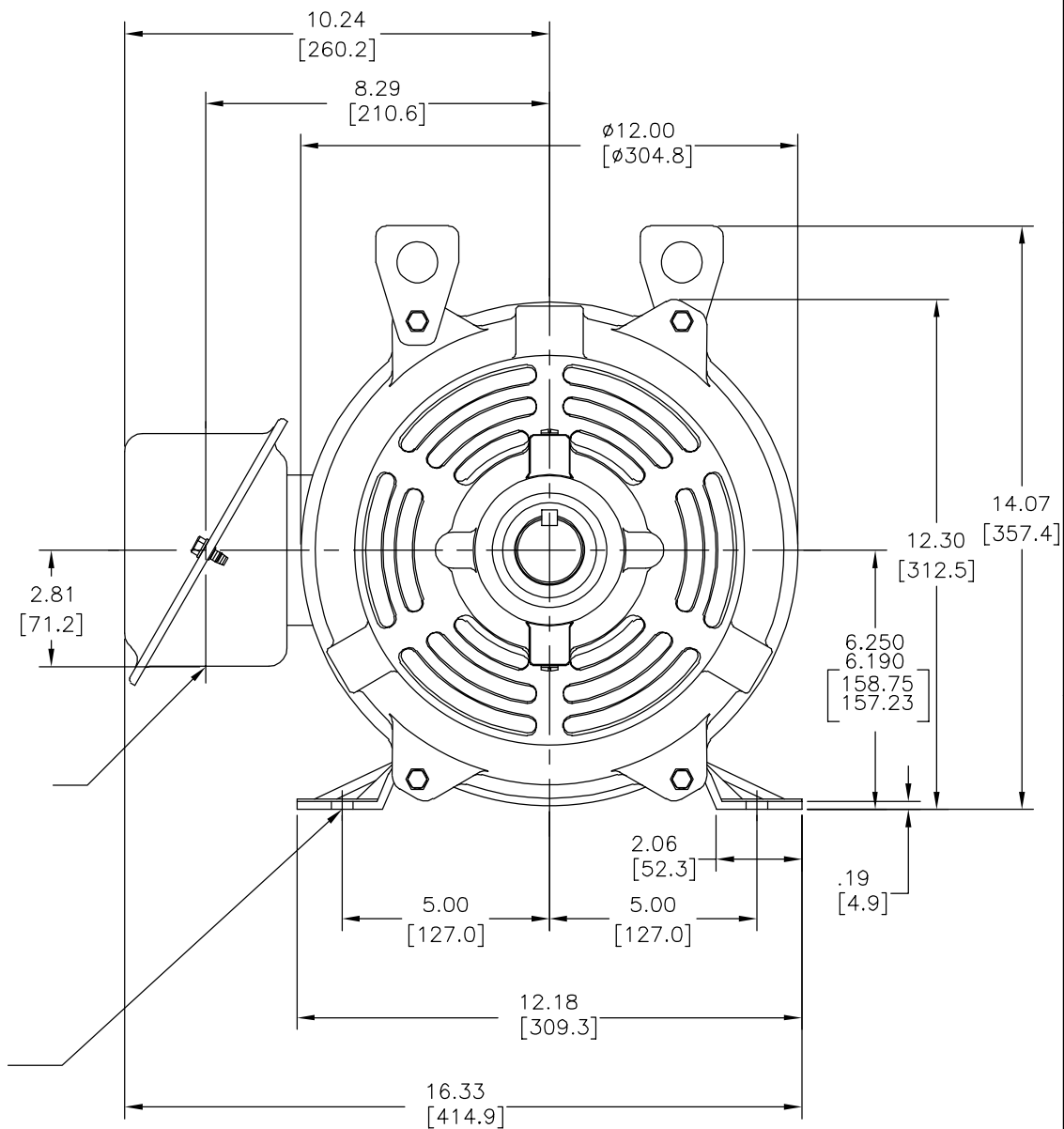
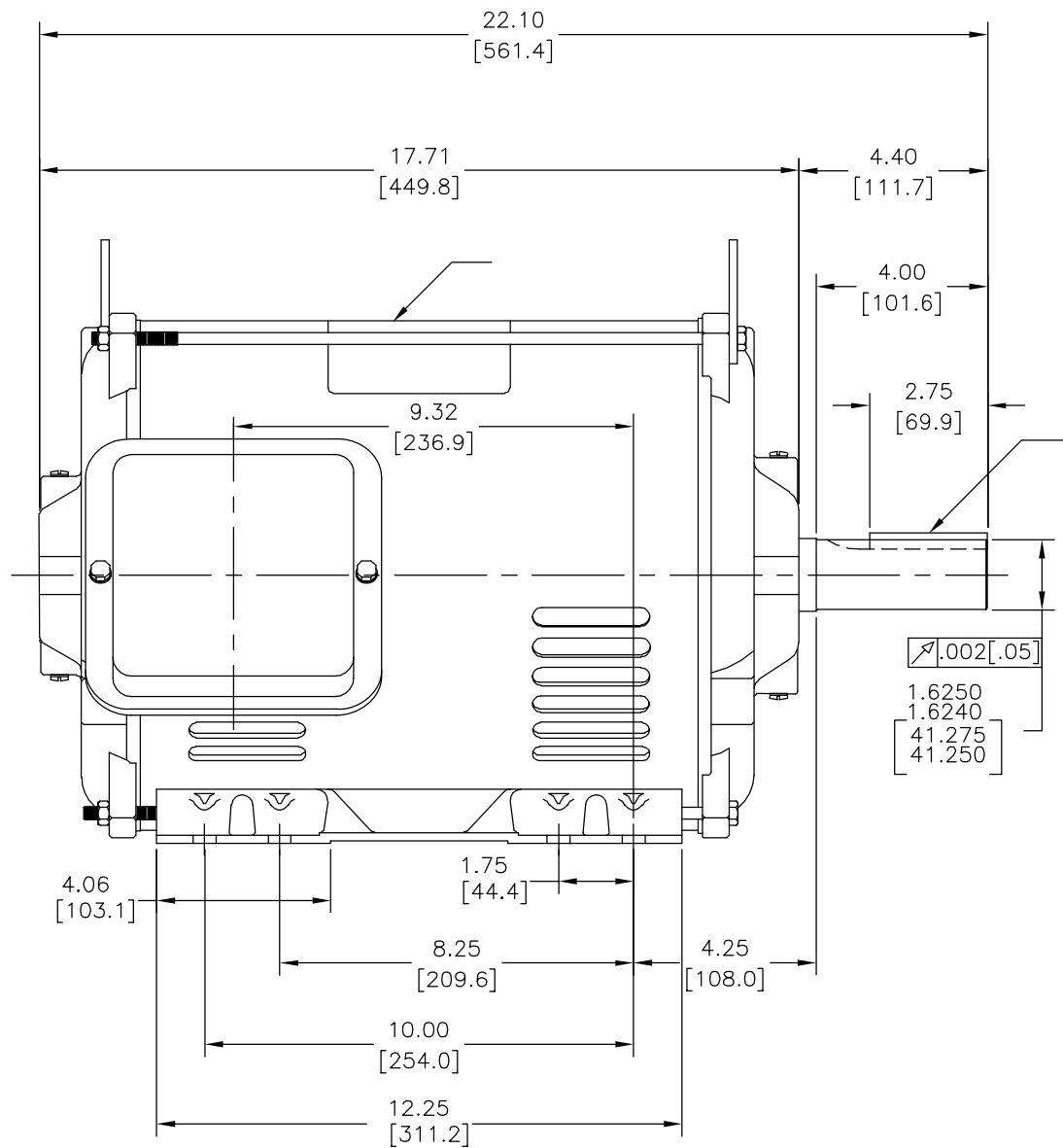
## SCALE

NONE

## SHEET

1

REVISION:	ECO	REVISADO POR:	FECHA:	APROBADO POR:	FECHA:
A	ECO-0026192	I.LOPEZ	08-23-2012	H.SANCHEZ	08-23-2012



CARACTERISTICAS DE GEOMETRIA Y SIMBOLOS  
— RECTITUD  
— ANGULARIDAD  
— PERPENDICULARIDAD (A ESCUADRA)  
— PARALELISMO  
— REDONDEZ (CIRCULARIDAD)  
— CILINDRICIDAD  
— PERFIL DE CUALQUIER SUPERFICIE  
— PERFIL DE CUALQUIER LINEA  
— VARIACION  
— POSICION REAL  
— CONCENTRICIDAD  
— SIMETRIA

A MENOS QUE SE ESPECIFIQUE DE OTRA MANERA, LAS TOLERANCIAS DE LAS DIMS. SON LAS SIGUIENTES:  
PULG. ±.1 ±.02 ±.005 ±.0005  
mm ±0.5 ±0.13 ±0.013  
ANG. ±.50 GRADOS  
ELIMINAR REBABAS Y ORILLAS FILOSAS DEL BORDE.  
PULG. .003-.015 mm 0.1-0.4  
FILETEAR ESQUINA: PULG. .020 mm 0.5  
MAQUINAR SUPERFICIES  
PULG. 125 mm 3.2

DIBUJADO POR: I.LOPEZ  
APROBADO POR: D.JAMORA  
TERCER ANGULO DE PROYECCION  
FECHA EDS: 11-11-2011  
REV. FORMATO: G  
CONFIDENCIAL: ESTE DIBUJO Y SU INFORMACION SON PROPIEDAD DE USO EXCLUSIVO Y CONFIDENCIAL DE REGAL-BELOIT CORPORATION. Y NO DEBERAN SER REVELADOS, DUPLICADOS, DISTRIBUIDOS O USARSE DE OTRA MANERA SIN EL CONSENTIMIENTO ESCRITO DE REGAL-BELOIT CORPORATION. -TODOS LOS DERECHOS RESERVADOS.

REGAL-BELOIT CORPORATION  
DESCRIPCION: MODEL-IHP OUTLINE  
TAMAÑO: C  
NUMERO DE DIBUJO: E927M2  
ESCALA: NONE  
HOJA: 1

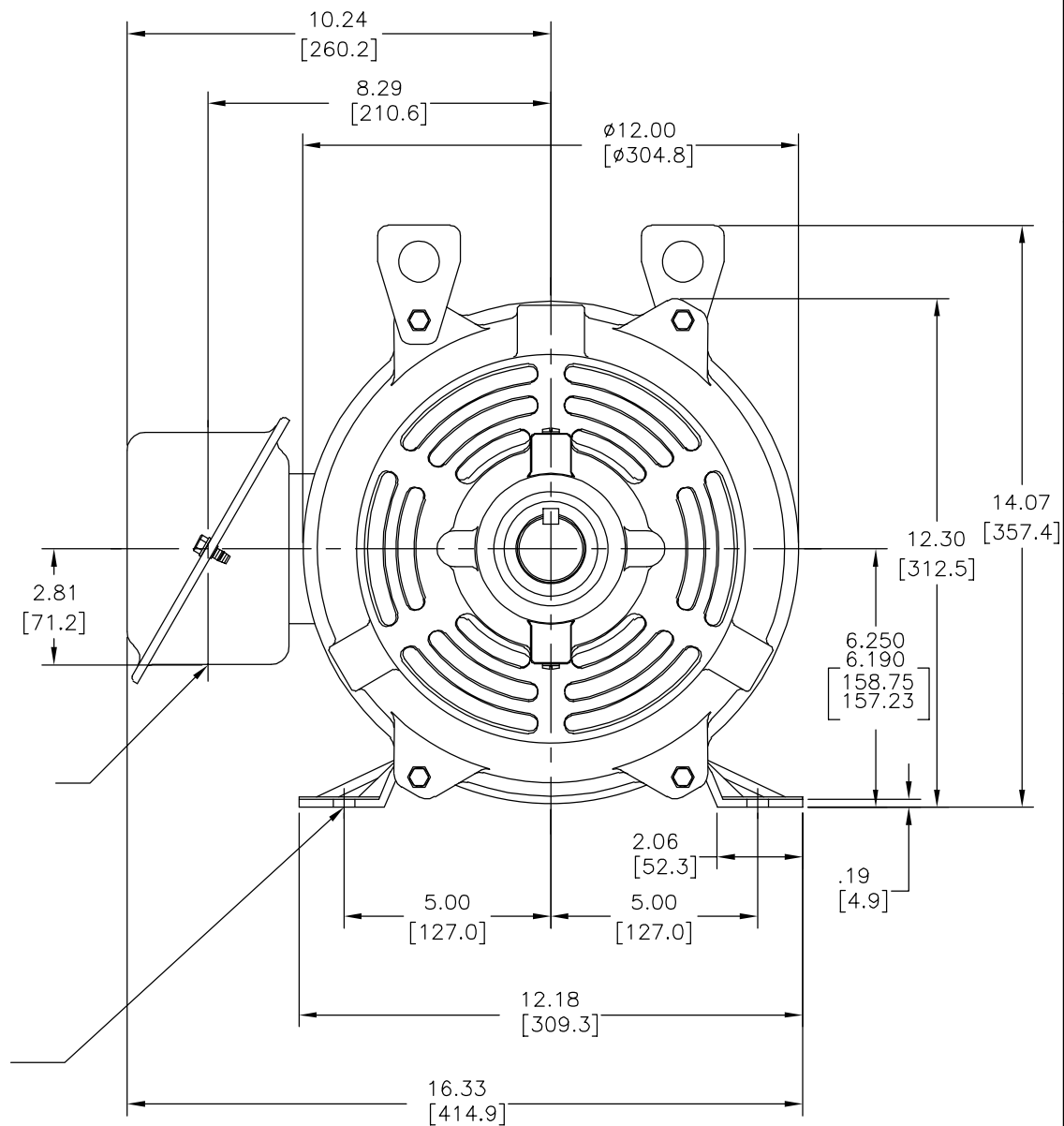
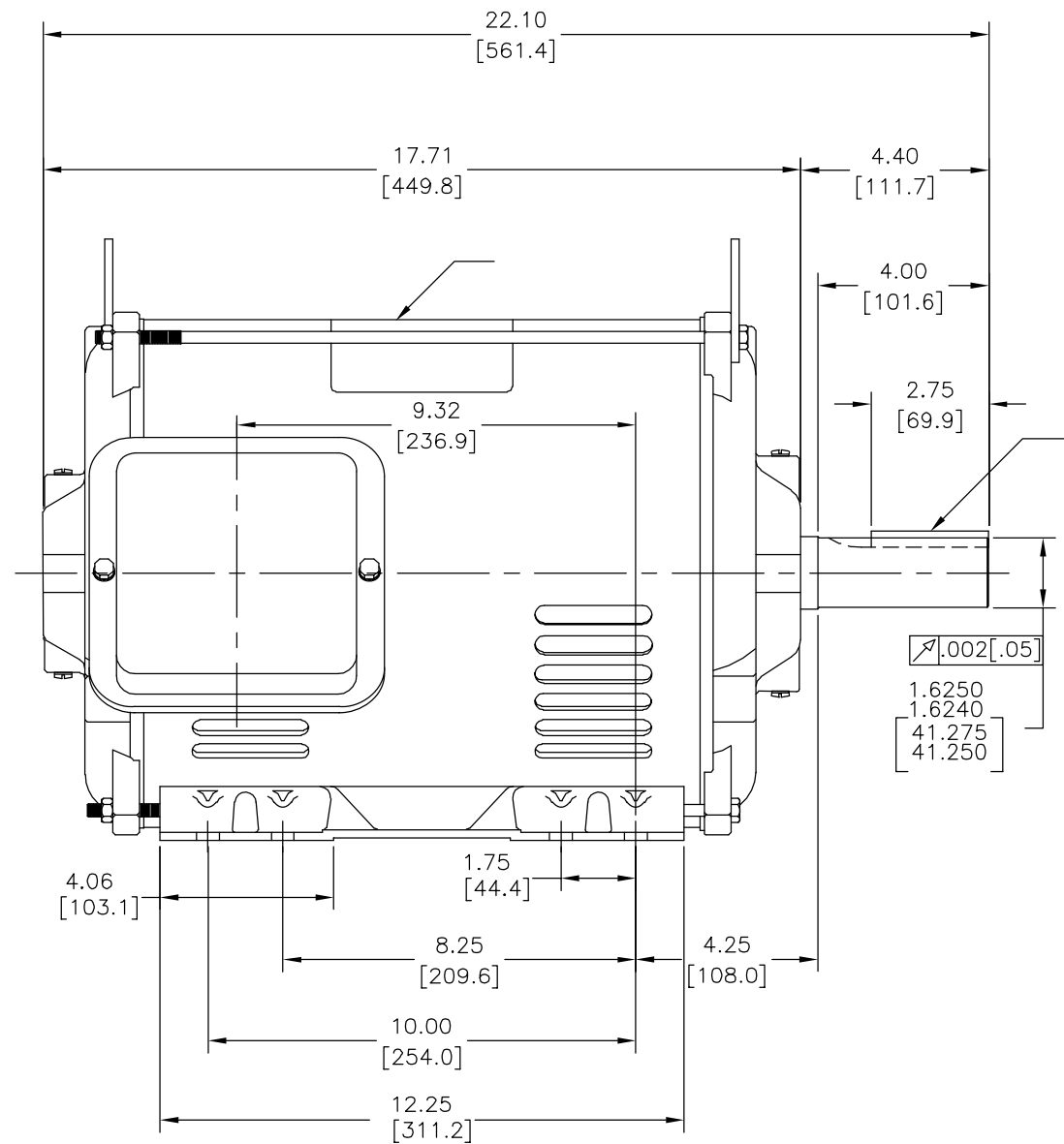
4

3

2

1

版本	ECO	编制	日期	批准	日期
A	ECO-0026192	I.LOPEZ	08-23-2012	H.SANCHEZ	08-23-2012



形位公差
□ 平面度
— 直线度
∠ 倾斜度
⊥ 垂直度
∥ 平行度
○ 圆度
⊙ 圆柱度
△ 面轮廓度
△ 线轮廓度
⌒ 圆跳动
⊕ 位置度
⊗ 同轴度
≡ 对称度

除另有注明 尺寸公差如下:
英寸 X XX XXX XXXX 毫米 ±0.1 ±0.02 ±0.005 ±0.0005 角度 ±.50 度 清理毛刺和尖棱 英寸 .003-.015 毫米 0.1-0.4 内圆角 英寸 .020 毫米 0.5 表面粗糙度 英制 125 米制 3.2

绘图:	I.LOPEZ	08-23-2012
批准:	D.JAMORA	08-23-2012
第三角投影	⊕	图纸格式发布日期 11-11-2011 图纸格式版本 G
机密: 本图纸及相关信息所有权归REGAL-BELOIT CORPORATION。 未经REGAL-BELOIT CORPORATION书面授权, 不得泄露、 复制、传播或作其他用途。—版权所有		

名称		MODEL-IHP OUTLINE	
图幅	C	图号	E927M2
比例	NONE	页号	1

THREE PHASE - SINGLE VOLTAGE  
MOTOR - CONDUIT BOX @ 'A'

TO REVERSE ROTATION:  
INTERCHANGE ANY TWO LINE  
LEAD CONNECTIONS

TERMINAL BLOCK WHEN SPECIFIED

IF MOTOR HAS 9 LEADS

T1(U1) T1(U1) T1(U1) → L1

T2(V1) T2(V1) T2(V1) → L2

T3(W1) T3(W1) T3(W1) → L3

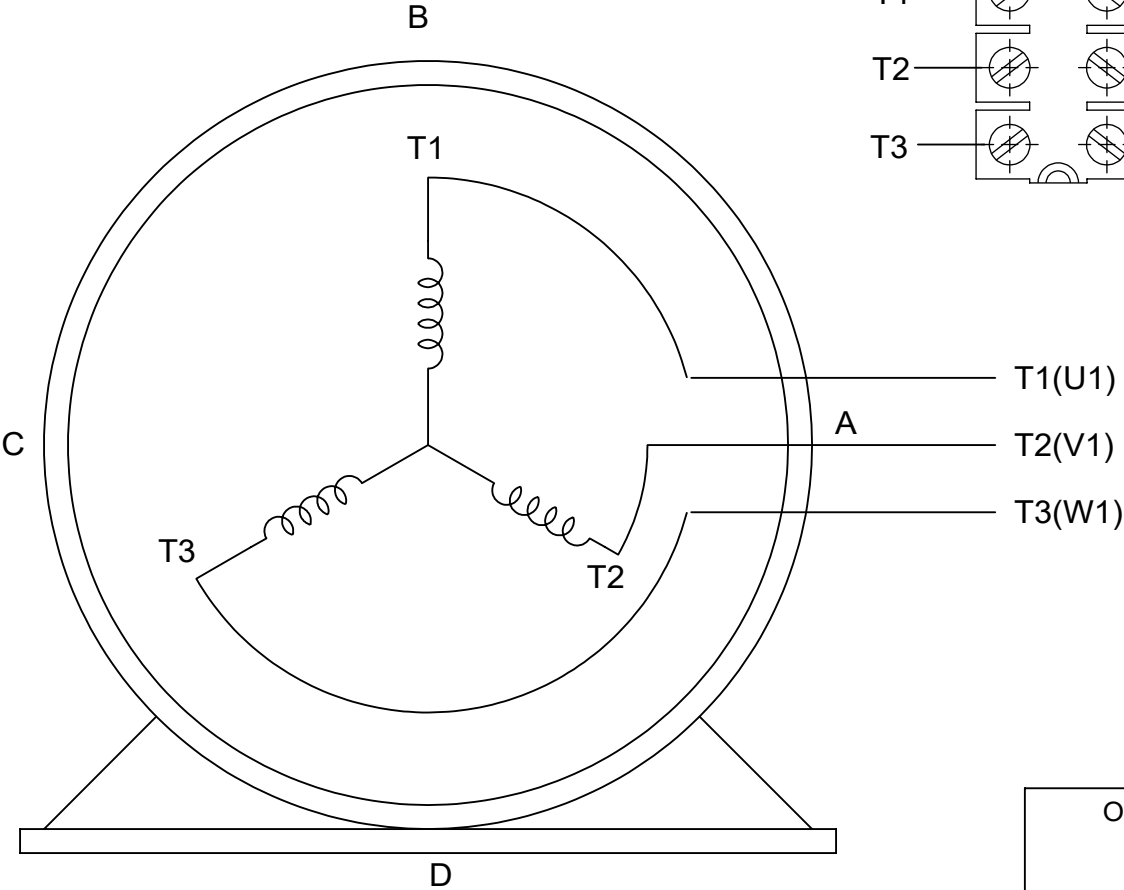
IF MOTOR HAS 6 LEADS

T1(U1) T1(U1) → L1

T2(V1) T2(V1) → L2

T3(W1) T3(W1) → L3

A-9806 DECAL



VIEW OF TERMINAL END

OPTIONAL CORD CONNECTION	
L1	WHITE
L2	RED
L3	BLACK

DRAWING REVISION AC	REVISION BY BS	REV DATE/© DATE 26/07/2022
REQUEST NUMBER CR-0010402	APPROVED BY SN	DATE 26/07/2022
REQUEST NUMBER DESCRIPTION DRAWING UPDATED		
COPYRIGHT (PER REVISION DATE) REGAL BELOIT AMERICA, INC. ALL RIGHTS RESERVED. PROPRIETARY AND CONFIDENTIAL INFORMATION - THIS DOCUMENT IS THE PROPERTY OF REGAL BELOIT AMERICA, INC. ("OWNER") AND CONTAINS OWNER'S PROPRIETARY INFORMATION. ANY PERSON, CORPORATION OR OTHER FIRM RECEIVING IT IS DEEMED, BY RECEIVING IT, TO AGREE THAT IT, AND/OR ANY PART OF IT, SHALL NOT BE DISCLOSED TO ANY PERSON, CORPORATION OR OTHER ENTITY, DUPLICATED, AND/OR USED, EXCEPT AS EXPRESSLY APPROVED IN WRITING IN ADVANCE BY OWNER. THIS DOCUMENT SHALL BE RETURNED TO OWNER UPON REQUEST. IT MAY BE SUBJECT TO CERTAIN RESTRICTIONS UNDER APPLICABLE EXPORT CONTROL LAWS AND REGULATIONS.		

PRIMARY DIMENSIONS ARE INCH  
mm DIMENSIONS IN [BRACKETS]  
ARE FOR REFERENCE ONLY

DRAWN BY DA
DATE 03-26-1993
APPROVED BY TB
DATE 03-26-1993
REFERENCE
THIRD ANGLE PROJECTION

Regal Beloit America, Inc.	
DESCRIPTION CONNECTION DIAGRAM EXTERNAL - SINGLE VOLTAGE - 3Ø MOTOR	
MATERIAL	PROCESS/FINISH
SIZE A	DRAWING NUMBER EE7300
SHEET 1 OF 1	