

PRODUCT INFORMATION PACKET



Model No: E926M2
Catalog No: E926M2

General Purpose Motor, 10.0 HP, 3 Ph, 60 Hz, 575 V, 1800 RPM, S215T Frame, DP



Regal and Century are trademarks of Regal Rexnord Corporation or one of its affiliated companies.
©2022 Regal Rexnord Corporation, All Rights Reserved. MC017097E





Nameplate Specifications

Output HP	10.0 Hp	Output KW	7.5 kW
Frequency	60 Hz	Voltage	575 V
Current	10.1 A	Speed	1755 rpm
Service Factor	1.15	Phase	3
Duty	Continuous	Insulation Class	F
Frame	S215T	Enclosure	Drip Proof
Thermal Protection	No Protection	Ambient Temperature	40 °C
UL	Recognized	CSA	Y
CE	N	Number of Speeds	1

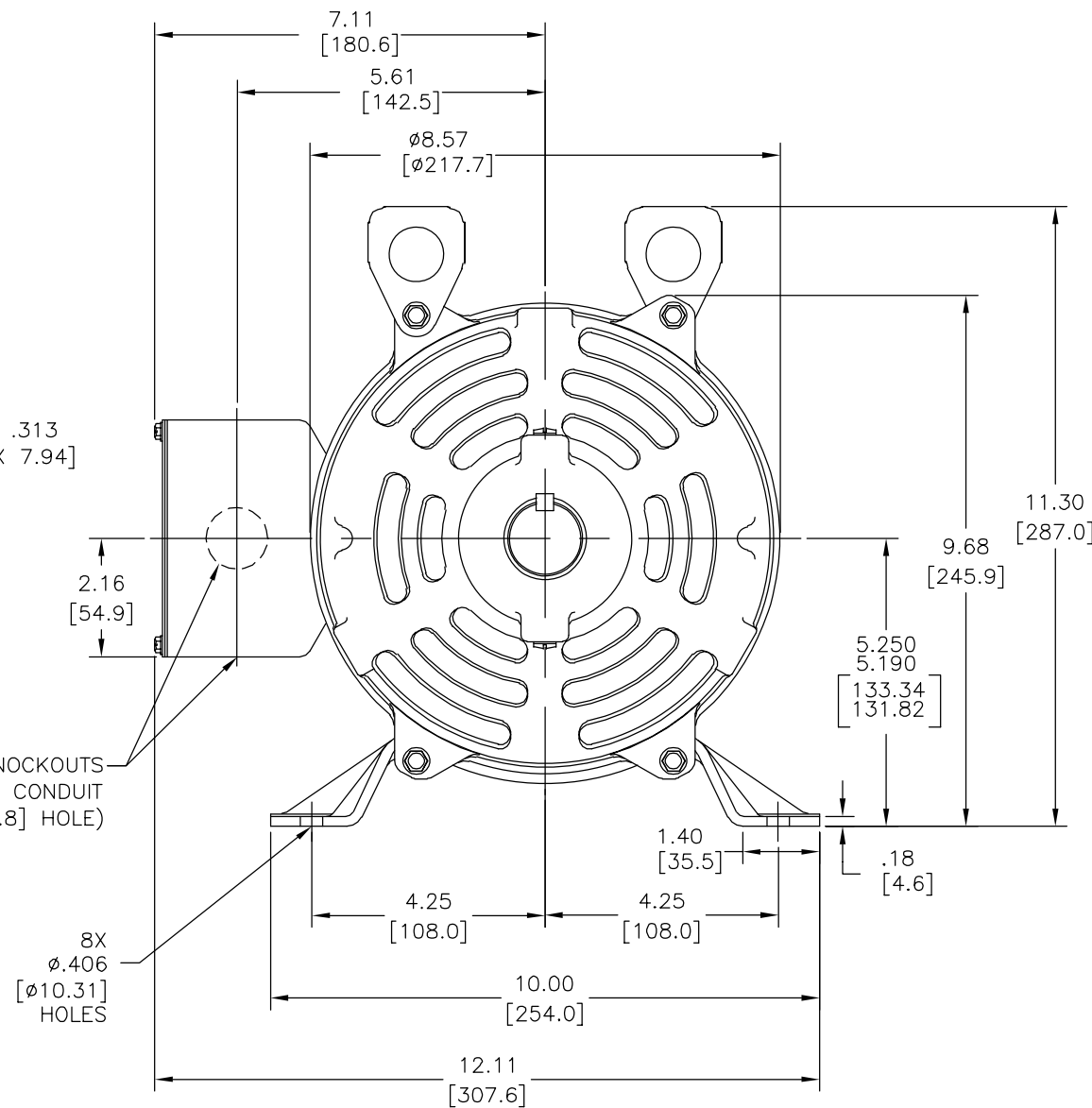
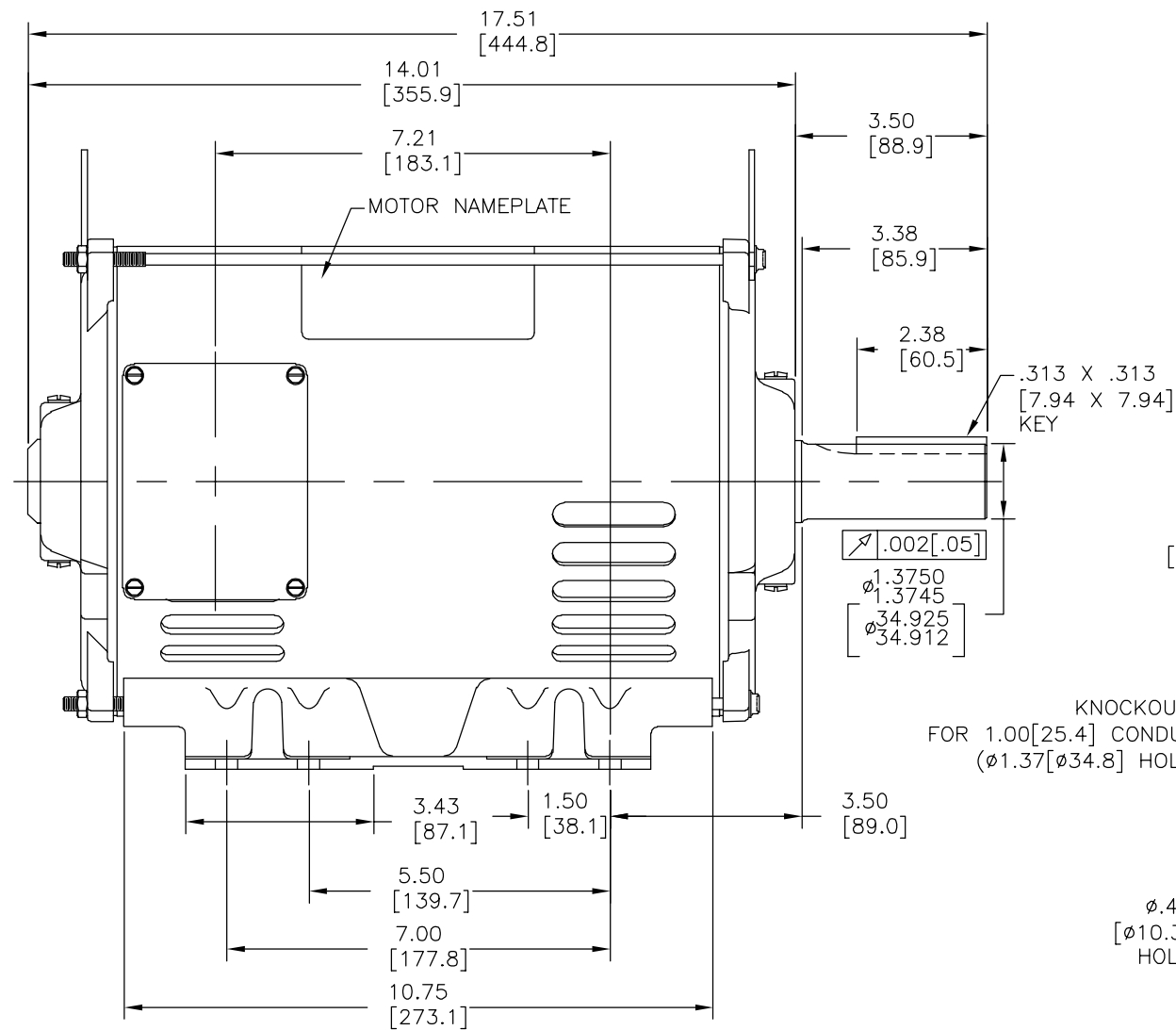
Technical Specifications

Electrical Type	Three Phase	Starting Method	Across The Line
Poles	4	Rotation	Counterclockwise
Mounting	Rigid Base	Drive End Bearing	Ball
Opp Drive End Bearing	Ball	Frame Material	Rolled Steel
Shaft Type	Keyed	Overall Length	17.51 in
Frame Length	11.00 in	Shaft Diameter	1.375 in
Shaft Extension	3.5 in		
Connection Drawing	A-EE7300-CY	Outline Drawing	E926M2-S01

This is an uncontrolled document once printed or downloaded and is subject to change without notice. Date Created:11/28/2022

MOTOR DESCRIPTION:
3 PHASE OPEN DRIPPROOF STEEL SHELL 213T OR 215T MOUNTING.
OTHER MOUNTING ORIENTATIONS ARE ACCEPTABLE; HOWEVER WHEN
MOUNTED OTHER THAN HORIZONTAL; MOTOR WILL NOT BE DRIPPROOF
AS DEFINED BY NEMA.

REV	ECO	REV BY	DATE	APPD	DATE
A	0026190	D.MUÑOZ	08-16-2012	H.SANCHEZ	08-16-2012



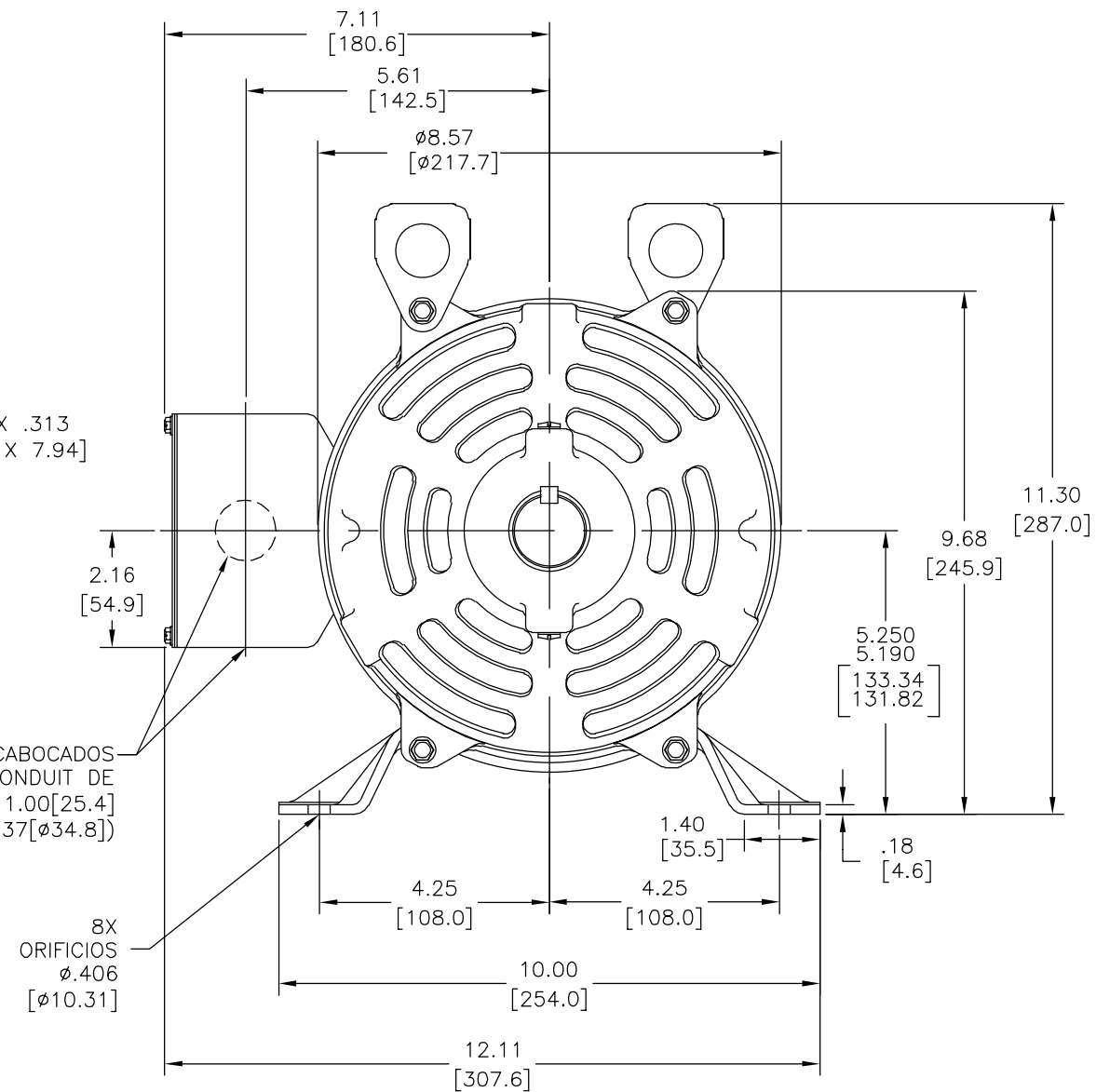
NOTES:

1. CONDUIT KNOCKOUTS ARE PROVIDED IN TERMINAL BOX TO ALLOW CONDUIT TO BE ATTACHED AT 6:00 O'CLOCK AND 3:00 O'CLOCK POSITION WITHOUT ROTATING THE BOX. TO PROVIDE ACCESS AT 12:00 O'CLOCK AND 9:00 O'CLOCK THE BOX MUST BE REMOVED, ROTATED 180°, AND REATTACHED.
2. MOTOR CAN BE CONVERTED FROM AN F1 TO AN F2 ASSEMBLY.
3. MOTOR VENTILATION: AIR INTAKE THROUGH OPENINGS IN THE FACE OF EACH BRACKET AND THEN EXHAUSTED THROUGH THE SLOTS ON EACH END OF THE SHELL.


GEOMETRIC CHARACTERISTICS & SYMBOLS		UNLESS OTHERWISE SPECIFIED DIM. TOLERANCES ARE AS FOLLOWS:		DR BY:		REGAL REGAL-BELOIT CORPORATION	
□ FLATNESS		INCH X XX XXX XXXX		D.MUÑOZ		08-16-2012	
— STRAIGHTNESS		mm ±0.1 ±0.02 ±0.005 ±0.0005		APPD:		D.JAMORA	
∠ ANGULARITY		mm ±0.5 ±0.13 ±0.013		THIRD ANGLE PROJECTION		EDS DATE 11-11-2011	
⊥ PERPENDICULARITY (SQUARENESS)		ANG. ±.50 DEG		REMOVE BURRS & BREAK SHARP EDGES:		FORMAT REV H	
// PARALLELISM		INCH .003-.015 mm 0.1-0.4		CORNER FILLETS TO:		DESCRIPTION	
○ ROUNDNESS (CIRCULARITY)		INCH .020 mm 0.5		MACHINE SURFACES:		MODEL-IHP	
⊘ CYLINDRICITY		INCH 125 mm 3.2		CONFIDENTIAL: THIS DRAWING AND ITS INFORMATION ARE THE EXCLUSIVE AND CONFIDENTIAL PROPERTY OF REGAL-BELOIT CORPORATION AND ARE NOT TO BE DISCLOSED, DUPLICATED, DISTRIBUTED OR OTHERWISE USED WITHOUT THE WRITTEN CONSENT OF REGAL-BELOIT CORPORATION. -ALL RIGHTS RESERVED.		OUTLINE	
△ PROFILE OF ANY SURFACE		MACHINE SURFACES:		SIZE		DWG NO	
∧ PROFILE OF ANY LINE		INCH 125 mm 3.2		C		E926M2	
↑ RUNOUT		MACHINE SURFACES:		SCALE		NONE	
⊕ TRUE POSITION		INCH 125 mm 3.2		SHEET		1	
◎ CONCENTRICITY		MACHINE SURFACES:		SHEET		1	
≡ SYMMETRY		MACHINE SURFACES:		SHEET		1	

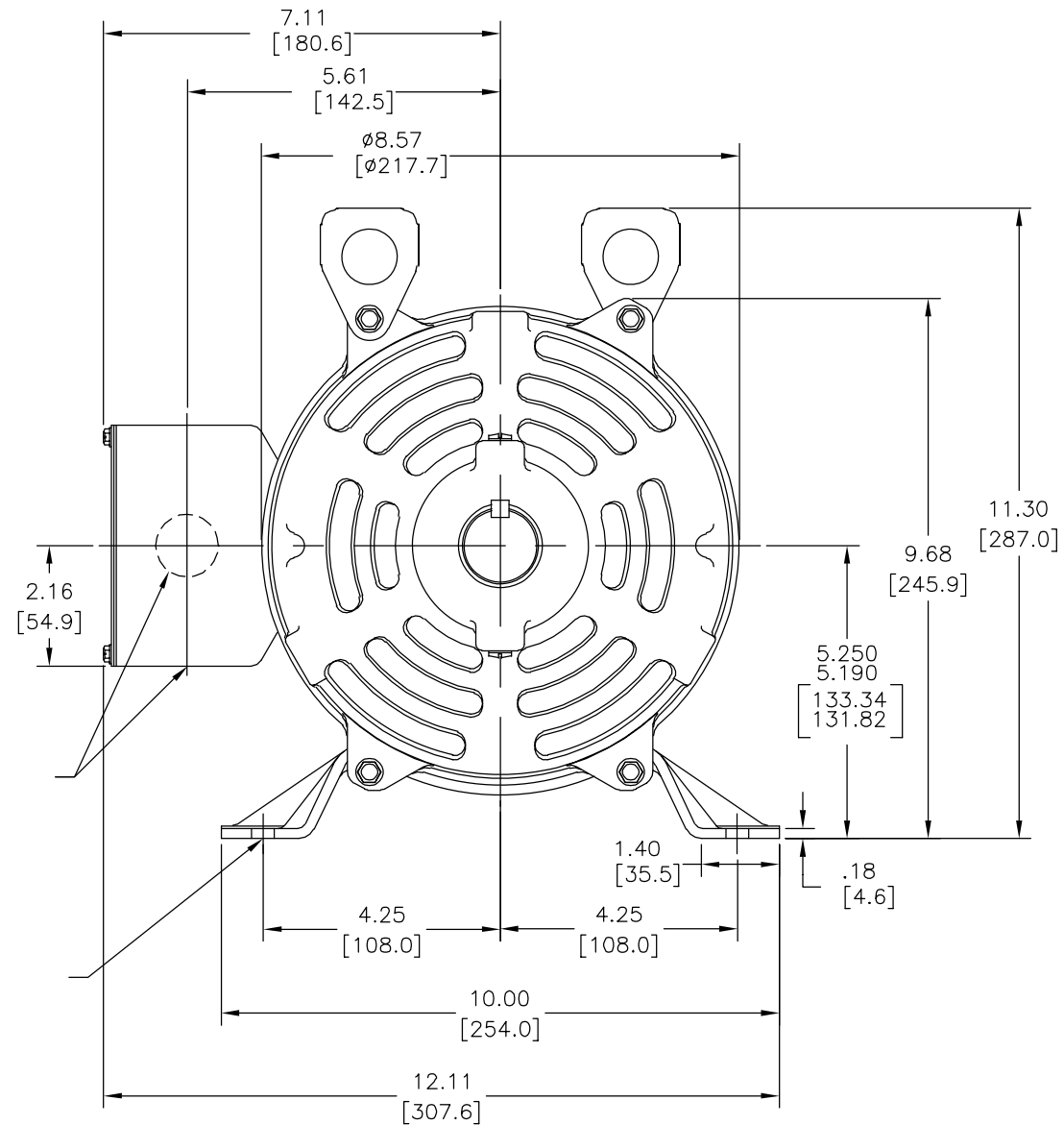
Technical drawing of the front view of a motor assembly. The drawing includes the following dimensions and labels:

- Overall width: 17.51 [444.8]
- Distance from left edge to centerline: 14.01 [355.9]
- Distance from centerline to right edge: 7.21 [183.1]
- Label: PLACA DE DATOS DEL MOTOR
- Distance from right edge to centerline: 3.50 [88.9]
- Distance from right edge to centerline: 3.38 [85.9]
- Distance from right edge to centerline: 2.38 [60.5]
- Label: .313 X .313 [7.94 X 7.94] CUÑA
- Surface texture symbol: $\sqrt{.002} [.05]$
- Dimensions: $\phi 1.3750$, $\phi 1.3745$, $\phi 34.925$, $\phi 34.912$
- Label: SACABOCADO PARA CONDUIT 1.00 [25.4] (ORIFICIO DE $\phi 1.37$ [34.8])
- Distance from right edge to centerline: 3.50 [89.0]
- Distance from left edge to centerline: 3.43 [87.1]
- Distance from centerline to right edge: 1.50 [38.1]
- Distance from left edge to centerline: 5.50 [139.7]
- Distance from left edge to centerline: 7.00 [177.8]
- Distance from left edge to centerline: 10.75 [273.1]



1. LOS SACABOCADOS ESTAN COLOCADOS EN LA CAJA DE TERMINALES PARA PERMITIR AL CONDUIT SER AGREGADO EN LA POSICION DE LAS 6:00 Y 3:00 SIN ROTAR LA CAJA. PARA PERMITIR EL ACCESO A LAS 12:00 Y 9:00 LA CAJA DEBE SER REMOVIDA Y GIRARLA 180° Y VUELATA A COLOCAR.
2. EL MOTOR PUEDE CONVERTIRSE DE UN ENSAMBLE F1 A UN F2.
3. VENTILACION DEL MOTOR: EL AIRE ENTRA ATRAVEZ DE LAS ABERTURAS EN LA CARA DE CADA TAPA Y ES EXPULSADO POR LAS RANURAS DE CADA LADO DE LA CARCAZA.

CARACTERÍSTICAS DE GEOMETRIA Y SIMBOLOS ✓ PLANICIDAD — RECTITUD ∠ ANGULARIDAD ⊥ PERPENDICULARIDAD (A ESCUADRA) // PARALELISMO ○ REDONDEZ (CIRCULARIDAD) ⊙ CILINDRICIDAD △ PERFIL DE CUALQUIER SUPERFICIE ↗ PERFIL DE CUALQUIER LINEA ↗ VARIACION ⊕ POSICION REAL ◎ CONCENTRICIDAD ≡ SIMETRIA	A MENOS QUE SE ESPECIFIQUE DE OTRA MANERA, LAS TOLERANCIAS DE LAS DIMS: SON LAS SIGUIENTES: X XX XXX XXXX PULG ±.1 ±.02 ±.005 ±.0005 mm ±0.5 ±0.13 ±0.013 ANG. ±.50 GRADOS ELIMINAR REBABAS Y ORILLAS FILOSAS DEL BORDE. PULG .003-.015 mm 0.1-0.4 FILETEAR ESQUINA: PULG .020 mm 0.5 MAQUINAR SUPERFICIES PULG 125 mm ·3.2	DIBUJADO POR: D.MUNOZ	08-16-2012	<div><div>REGAL</div><div>REGAL-BELOIT CORPORATION</div></div>		
		APROBADO POR: D.JAMORA	08-16-2012	DESCRIPCION: MODEL-IHP OUTLINE		
		TERCER ANGULO DE PROYECCION 	FECHA EDS: 11-11-2011 REV. FORMATO: H	TAMAÑO: C NUMERO DE DIBUJO: E926M2		
ASME Y14.5M 1994 DIMS METRICAS MOSTRADAS [PARENTESIS]		CONFIDENCIAL: ESTE DIBUJO Y SU INFORMACION SON PROPIEDAD DE USO EXCLUSIVO Y CONFIDENCIAL DE REGAL-BELOIT CORPORATION. Y NO DEBERAN SER REVELADOS, Duplicados, DISTRIBUIDOS O USARSE DE OTRA MANERA SIN EL CONSENTIMIENTO ESCRITO DE REGAL-BELOIT CORPORATION. -TODOS LOS DERECHOS RESERVADOS.			ESCALA: NONE	HOJA: 1



<div>形位公差</div> <div><div>□</div>平面度</div> <div><div>—</div>直线度</div> <div><div>∠</div>倾斜度</div> <div><div>⊥</div>垂直度</div> <div><div>∥</div>平行度</div> <div><div>○</div>圆度</div> <div><div>⊘</div>圆柱度</div> <div><div>⌒</div>面轮廓度</div> <div><div>⌒</div>线轮廓度</div> <div><div>⦿</div>圆跳动</div> <div><div>⦿</div>位置度</div> <div><div>⦿</div>同轴度</div> <div><div>⦿</div>对称度</div> <div>ASME Y14.5M 1994</div>	<div>除另有注明</div> <div>尺寸公差如下:</div> <div><div>英寸</div><div><div><div>X</div><div>±.1</div></div><div><div>XX</div><div>±.02</div></div><div><div>XXX</div><div>±.005</div></div><div><div>XXXX</div><div>±.0005</div></div></div><div><div>毫米</div><div><div><div>±0.5</div><div>±0.13</div><div>±0.013</div></div></div></div><div>角度 ±.50 度</div><div>清理毛刺和尖棱</div><div><div>英寸</div><div><div><div>.003-.015</div><div>毫米 0.1-0.4</div></div></div></div><div>内圆角</div><div><div>英寸</div><div><div><div>.020</div><div>毫米 0.5</div></div></div></div><div>表面粗糙度</div><div><div>英制</div><div><div><div>√125</div><div>米制 √3.2</div></div></div></div></div> <div>米制尺寸显示在[]</div>	<div>绘图:</div> <div><div>D.MUÑOZ</div><div>08-16-2012</div></div> <div>批准:</div> <div><div>D.JAMORA</div><div>08-16-2012</div></div> <div>第三角投影</div> <div><div><div><div><div><div>⊕</div><div>⌐</div></div></div><div>图纸格式发布日期 11-11-2011</div><div>图纸格式版本 H</div></div></div><div>机密: 本图纸及相关信息所有权归REGAL-BELOIT CORPORATION. 未经REGAL-BELOIT CORPORATION书面授权, 不得泄露、复制、传播或作其他用途。一版权所有</div></div>	<div><div><div>REGAL</div><div>REGAL-BELOIT CORPORATION</div></div><div>名称</div><div>MODEL-IHP OUTLINE</div><div>图幅</div><div>C</div><div>图号</div><div>E926M2</div><div>比例</div><div>NONE</div><div>页号</div><div>1</div></div>
---	---	---	--

THREE PHASE - SINGLE VOLTAGE
MOTOR - CONDUIT BOX @ 'A'

TO REVERSE ROTATION:
INTERCHANGE ANY TWO LINE
LEAD CONNECTIONS

TERMINAL BLOCK WHEN SPECIFIED

IF MOTOR HAS 9 LEADS

T1(U1) T1(U1) T1(U1) → L1

T2(V1) T2(V1) T2(V1) → L2

T3(W1) T3(W1) T3(W1) → L3

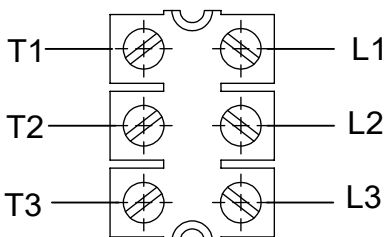
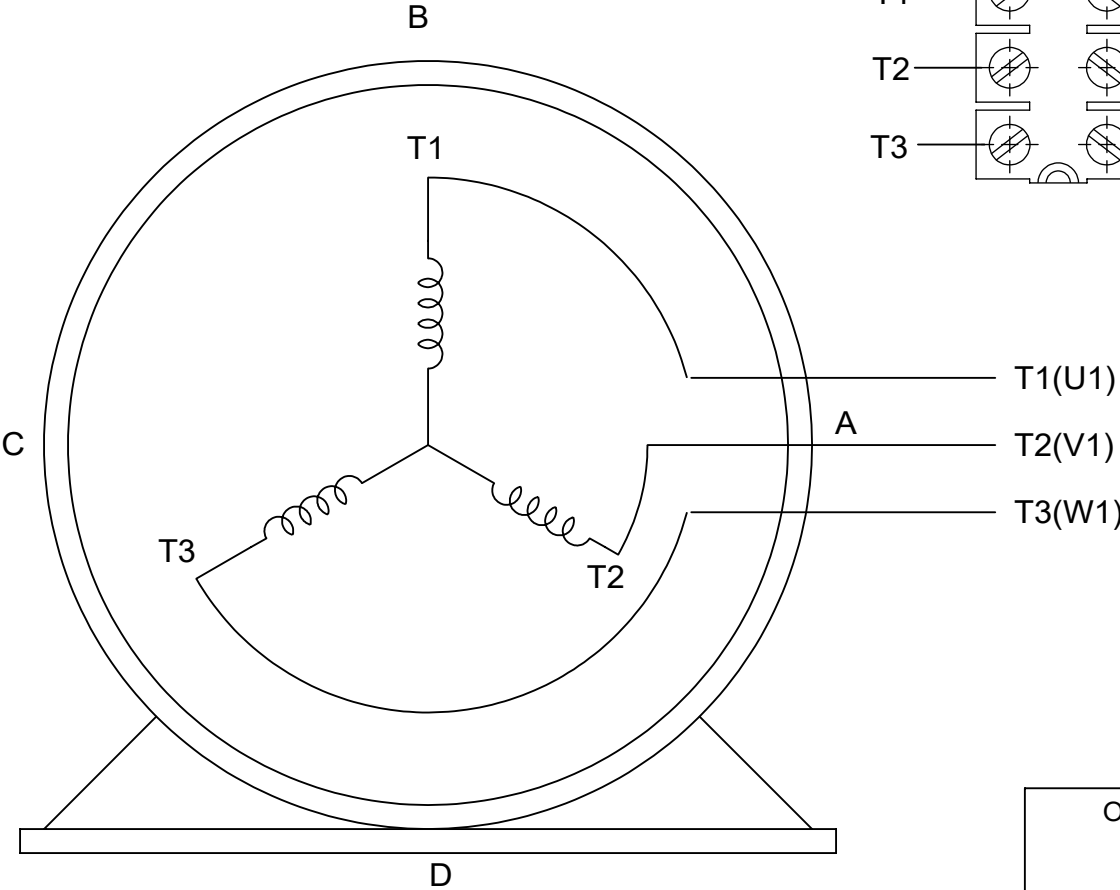
IF MOTOR HAS 6 LEADS

T1(U1) T1(U1) → L1

T2(V1) T2(V1) → L2


T3(W1) T3(W1) → L3

A-9806 DECAL



VIEW OF TERMINAL END

OPTIONAL CORD CONNECTION	
L1	WHITE
L2	RED
L3	BLACK

DRAWING REVISION AC	REVISION BY BS	REV DATE/© DATE 26/07/2022	PRIMARY DIMENSIONS ARE INCH mm DIMENSIONS IN [BRACKETS] ARE FOR REFERENCE ONLY	DRAWN BY DA	<div></div> <div>Regal Beloit America, Inc.</div>		
REQUEST NUMBER CR-0010402	APPROVED BY SN	DATE 26/07/2022		DATE 03-26-1993			
REQUEST NUMBER DESCRIPTION DRAWING UPDATED				APPROVED BY TB	DESCRIPTION <div>CONNECTION DIAGRAM</div> <div>EXTERNAL - SINGLE VOLTAGE - 3Ø MOTOR</div>		
COPYRIGHT (PER REVISION DATE) REGAL BELOIT AMERICA, INC. ALL RIGHTS RESERVED. PROPRIETARY AND CONFIDENTIAL INFORMATION - THIS DOCUMENT IS THE PROPERTY OF REGAL BELOIT AMERICA, INC. ("OWNER") AND CONTAINS OWNER'S PROPRIETARY INFORMATION. ANY PERSON, CORPORATION OR OTHER FIRM RECEIVING IT IS DEEMED, BY RECEIVING IT, TO AGREE THAT IT, AND/OR ANY PART OF IT, SHALL NOT BE DISCLOSED TO ANY PERSON, CORPORATION OR OTHER ENTITY, DUPLICATED, AND/OR USED, EXCEPT AS EXPRESSLY APPROVED IN WRITING IN ADVANCE BY OWNER. THIS DOCUMENT SHALL BE RETURNED TO OWNER UPON REQUEST. IT MAY BE SUBJECT TO CERTAIN RESTRICTIONS UNDER APPLICABLE EXPORT CONTROL LAWS AND REGULATIONS.				DATE 03-26-1993			
				REFERENCE	MATERIAL		PROCESS/FINISH
							THIRD ANGLE PROJECTION