

PRODUCT INFORMATION PACKET



Model No: E545
Catalog No: E545
25.0 HP General Purpose Motor, 3 phase, 1800 RPM, 200 V, 284T Frame, ODP
General Purpose Motors



Regal and Century are trademarks of Regal Rexnord Corporation or one of its affiliated companies.
©2021 Regal Rexnord Corporation, All Rights Reserved. MC017097E





Nameplate Specifications

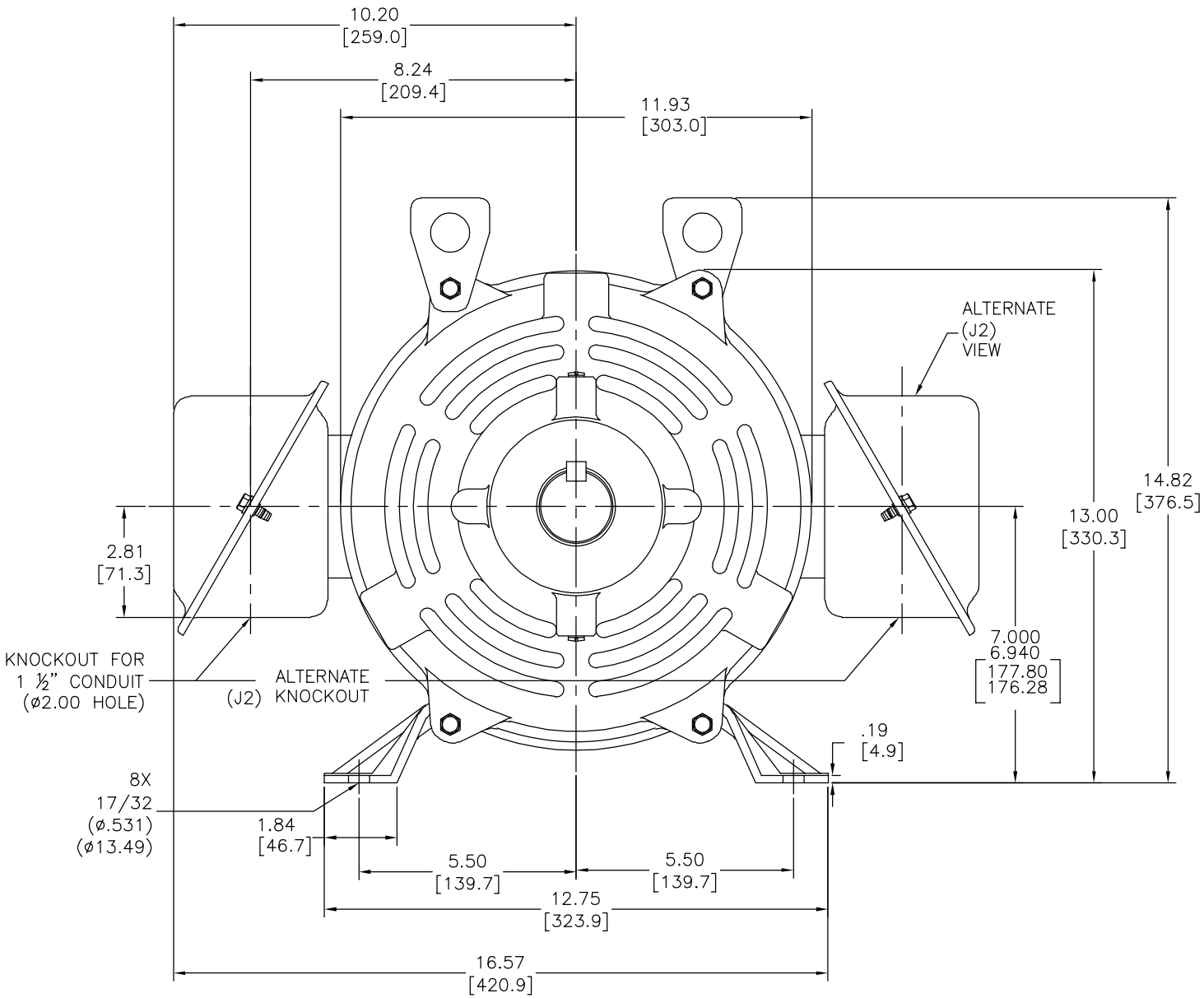
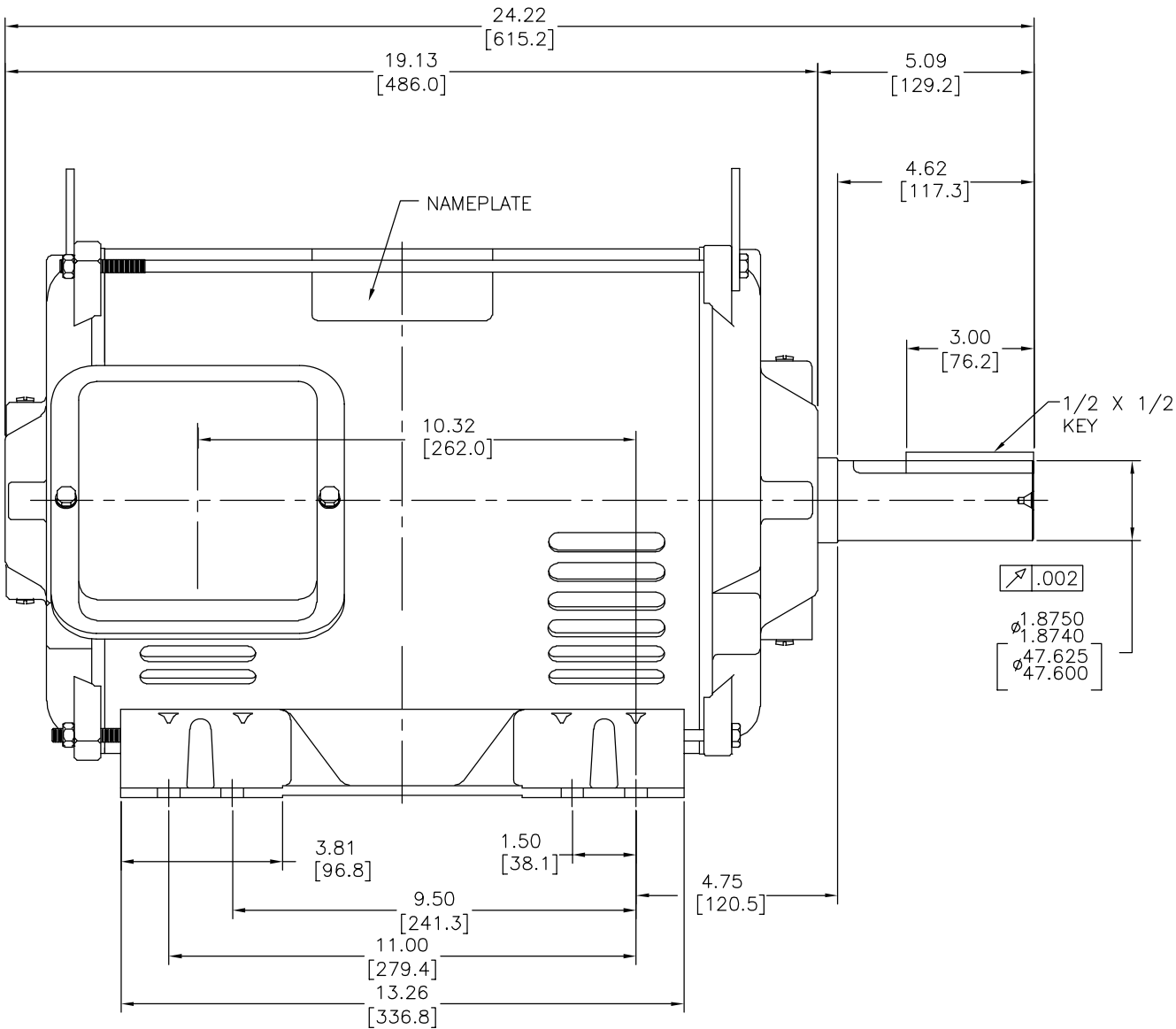
Output HP	25.0 Hp	Output KW	18.7 kW
Frequency	60 Hz	Voltage	200 V
Current	69.8 A	Speed	1740 rpm
Service Factor	1.15	Phase	3
Duty	Continuous	Insulation Class	F
Frame	S284T	Enclosure	Drip Proof
Thermal Protection	No	Ambient Temperature	40 °C
UL	Recognized	CSA	Y
CE	N	Number of Speeds	1

Technical Specifications

Electrical Type	Three Phase	Starting Method	Across The Line
Poles	4	Rotation	Counterclockwise
Mounting	Rigid Base	Drive End Bearing	Ball
Opp Drive End Bearing	Ball	Frame Material	Rolled Steel
Shaft Type	Keyed	Overall Length	24.25 in
Frame Length	14.00 in	Shaft Diameter	1.875 in
Shaft Extension	4.62 in		
Connection Drawing	80022803.PCX	Outline Drawing	18720601-001-S01

This is an uncontrolled document once printed or downloaded and is subject to change without notice. Date Created:10/12/2021

REV	ECO	REV BY	DATE	APPD	DATE
C	ECO-0025427	T.HUANG	04-18-2012	B.C.SHEN	04-18-2012



- NOTES:
- CONDUIT BOX MAY BE ROTATED IN 90° INCREMENTS.
 - MOTOR IS SUITABLE FOR FIELD CONVERSION FROM AN F1 TO AN F2 CONDUIT BOX LOCATION.
 - MOTOR VENTILATION: AIR INTAKE THROUGH OPENINGS IN THE FACE OF EACH BRACKET AND EXHAUSTED THROUGH THE VENT SLOTS ON EACH END OF THE SHELL.

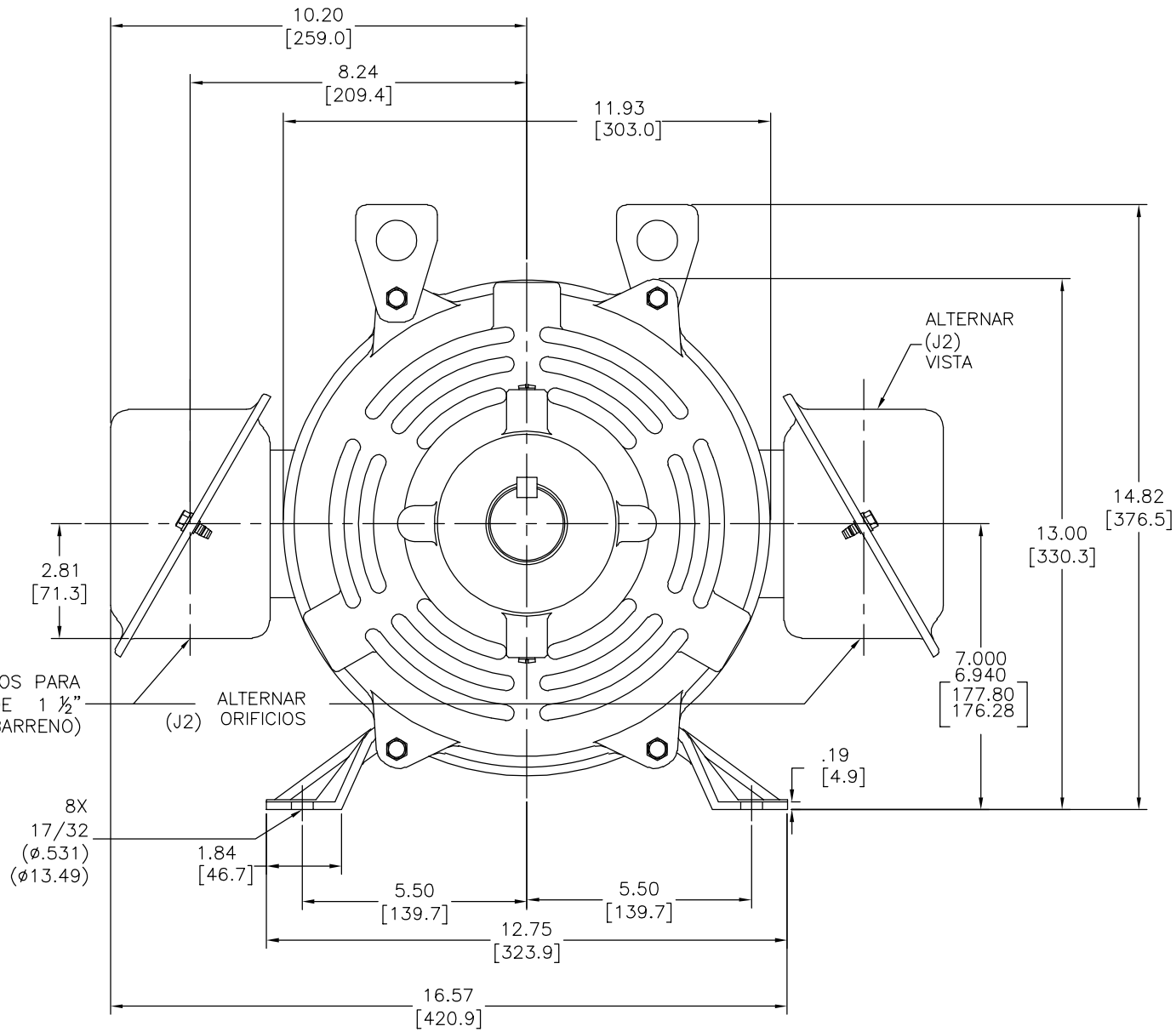
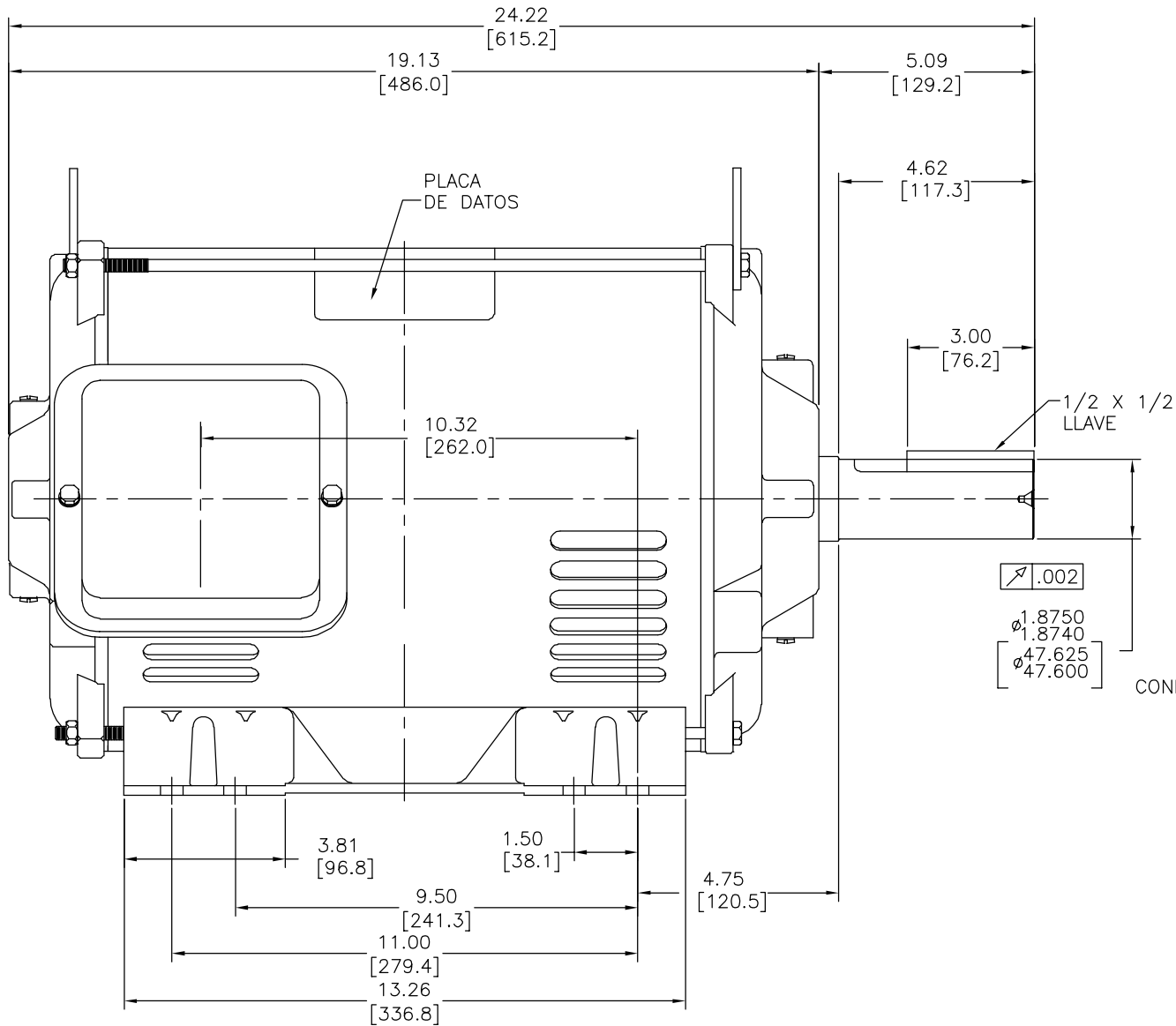
MOTOR DESCRIPTION:

3 PHASE OPEN DRIPPROOF STEEL SHELL 284T OR 286T MOUNTING.
OTHER MOUNTING ORIENTATIONS ARE ACCEPTABLE; HOWEVER WHEN MOUNTED OTHER THAN HORIZONTAL; MOTOR WILL NOT BE DRIPPROOF AS DEFINED BY NEMA.

CERTIFICATION OF A.C. MOTORS		
CERTIFIED FOR		
SPEC. NO. _____	ORDER NO. _____	
ORDER I.D. _____	I.D. NO. _____	EMI EMI
TYPE _____	FRAME _____	H.P. _____
R.P.M. _____	VOLTS _____	PHASE _____
HERTZ _____	AMPS _____	CODE _____
REMARKS _____		
APPROVED BY _____ DATE: _____		

GEOMETRIC CHARACTERISTICS & SYMBOLS □ FLATNESS — STRAIGHTNESS ∠ ANGULARITY ⊥ PERPENDICULARITY (SQUARENESS) // PARALLELISM ○ ROUNDNESS (CIRCULARITY) ⌀ CYLINDRICITY ≡ PROFILE OF ANY SURFACE ⌒ PROFILE OF ANY LINE ⌒ RUNOUT ⊕ TRUE POSITION ◎ CONCENTRICITY ⊖ SYMMETRY ASME Y14.5M 1994	UNLESS OTHERWISE SPECIFIED DIM. TOLERANCES ARE AS FOLLOWS: INCH X XX XXX XXXX mm ±.1 ±.02 ±.005 ±.0005 mm ±0.5 ±0.13 ±0.013 ANG. ±.50 DEG REMOVE BURRS & BREAK SHARP EDGES: INCH .003-.015 mm 0.1-0.4 CORNER FILLETS TO: INCH .020 mm 0.5 MACHINE SURFACES: INCH 125 mm 3.2 METRIC DIMS. SHOWN IN [BRACKETS]	DR BY: AJB	01-14-2004	DESCRIPTION OUTLINE S284T/S286T ODP EE STD SIZE D DWG NO 18720601-001 SCALE NONE SHEET 1
		APPD: JAS	01-14-2004	
		THIRD ANGLE PROJECTION	EDS DATE 11-11-2011 FORMAT REV G	
		CONFIDENTIAL: THIS DRAWING AND ITS INFORMATION ARE THE EXCLUSIVE AND CONFIDENTIAL PROPERTY OF REGAL-BELOIT CORPORATION AND ARE NOT TO BE DISCLOSED, DUPLICATED, DISTRIBUTED OR OTHERWISE USED WITHOUT THE WRITTEN CONSENT OF REGAL-BELOIT CORPORATION. -ALL RIGHTS RESERVED.		

REVISION:	ECO	REVISADO POR:	T.HUANG	FECHA:	04-18-2012	APROBADO POR:	B.C.SHEN	FECHA:	04-18-2012
C	ECO-0025427								



NOTAS:

- CAJA DE CONDUCTORES PUEDER ROTARSE EN INCREMENTOS DE 90°
- EL MOTOR ES EL ADECUADO PARA CONVERSION DE CAMPOS DESDE LA UBICACION AN F1 Y AN F2
- VENTILACION DE MOTOR: LA ENTRADA DE AIRE ES A TRAVEZ DE LOS ORIFICIOS EN LA CARA DE CADA TAPA Y EXTRAIDA A TRAVEZ DE LAS RANURAS DE VENTILACION AL FINAL DE CADA CARCAZA

DESCRIPCION DEL MOTOR:

ESCUDO 284T DE ACERO A PRUEBA DE GOTEO CON 3 FASES ABIERTAS. OTRO TIPO DE OPERACIONES DE MONTAGE ES ACEPTABLE; SIN EMBARGO CUANDO SEA MONTADO DE CUALQUIER OTRA FORMA MENOS HORIZONTALMENTE NO SERA A PRUEBA DE GOTEO COMO NEMA LO DEFINE.

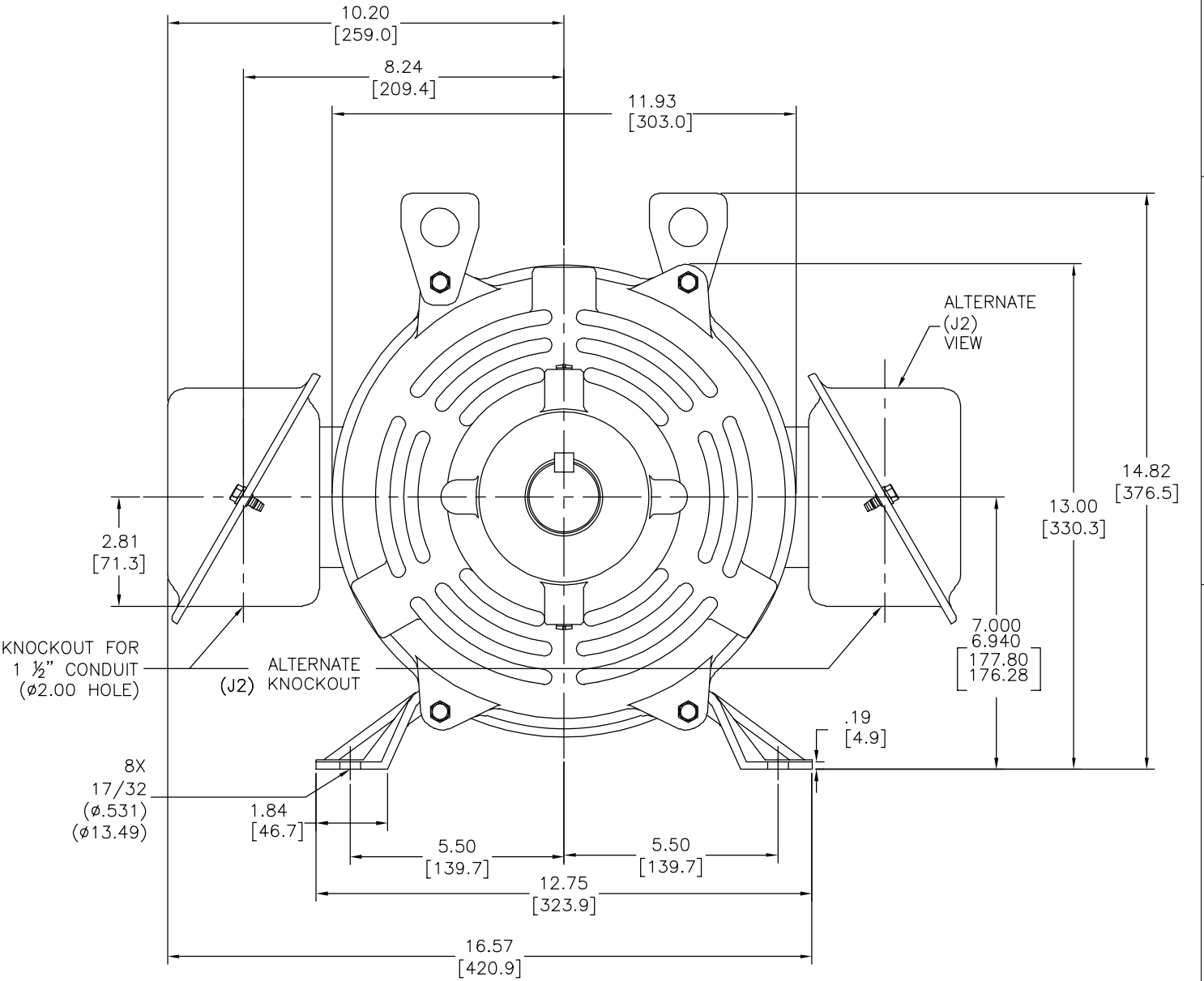
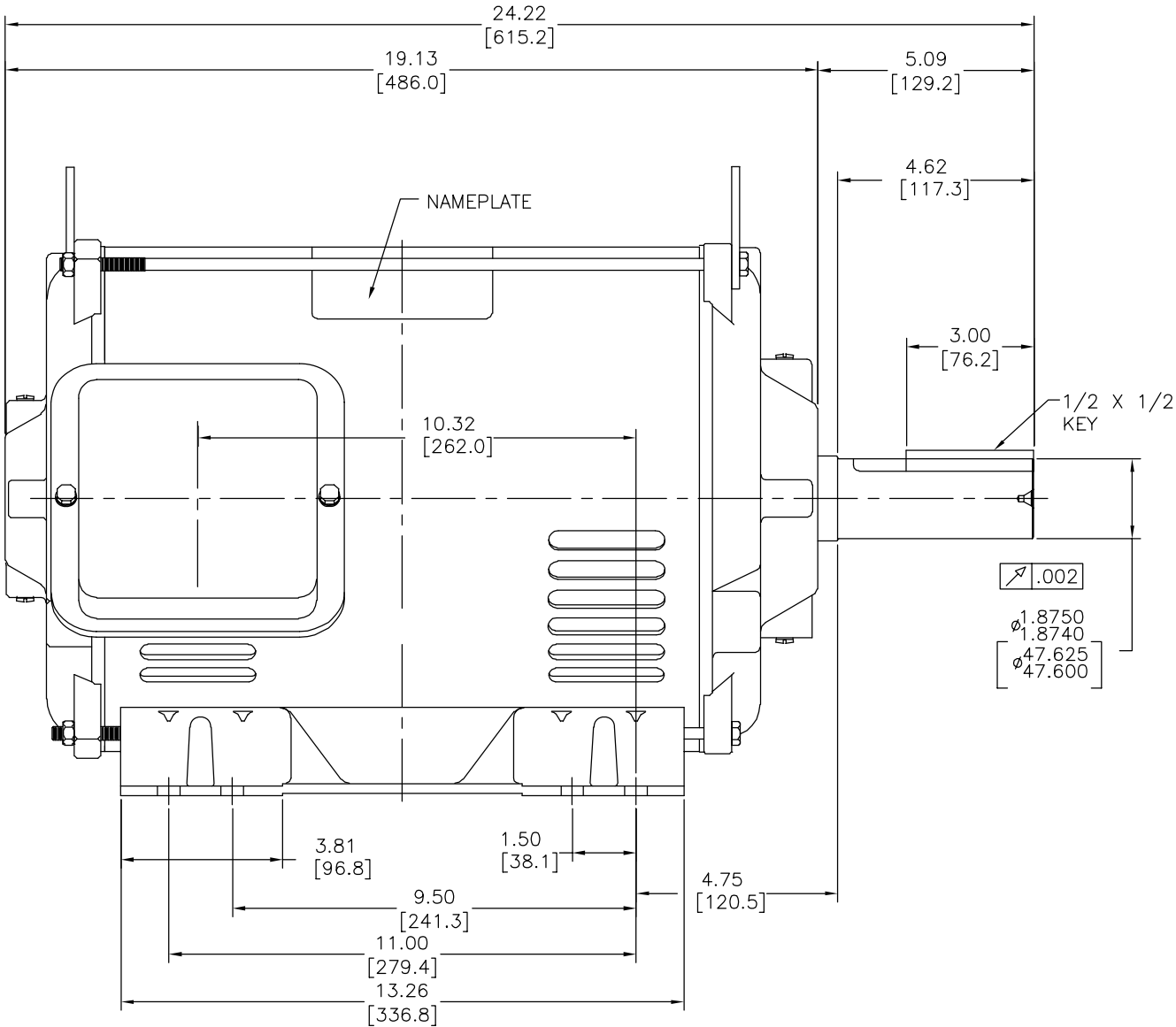
CERTIFICATION OF A.C. MOTORS		
CERTIFIED FOR		
SPEC. NO. _____	ORDER NO. _____	
ORDER I.D. _____	I.D. NO. _____	EMI EMI
TYPE _____	FRAME _____	H.P. _____
R.P.M. _____	VOLTS _____	PHASE _____
HERTZ _____	AMPS _____	CODE _____
REMARKS _____		
APPROVED BY _____ DATE: _____		

CARACTERISTICAS DE GEOMETRIA Y SIMBOLOS: / PLANICIDAD - RECTITUD / ANGULARIDAD L PERPENDICULARIDAD (A ESCUADRA) // PARALELISMO O REDONDEZ (CIRCULARIDAD) H CILINDRICIDAD = PERFIL DE CUALQUIER SUPERFICIE / PERFIL DE CUALQUIER LINEA + VARIACION + POSICION REAL @ CONCENTRICIDAD = SIMETRIA	ASME Y14.5M 1994
--	------------------

A MENOS QUE SE ESPECIFIQUE DE OTRA MANERA, LAS TOLERANCIAS DE LAS DIMS. SON LAS SIGUIENTES: PULG. ±.1 ±.02 ±.005 ±.0005 mm ±0.5 ±0.13 ±0.013 ANG. ±50 GRADOS ELIMINAR REBABAS Y ORILLAS FILOSAS DEL BORDE. PULG. .003-.015 mm 0.1-0.4 FILETEAR ESQUINA: PULG. .020 mm 0.5 MAQUINAR SUPERFICIES PULG. 125 mm 3.2	DIMENSIONES METRICAS MOSTRADAS [PARENTESIS]
---	---

DIBUJADO POR: AUB	01-14-2004	DESCRIPCION: OUTLINE S284T/S286T ODP EE STD
APROBADO POR: JAS	01-14-2004	
TERCER ANGULO DE PROYECCION	FECHA EDS: 11-11-2011 REV. FORMATO: G	TAMAÑO: D
CONFIDENCIAL: ESTE DIBUJO Y SU INFORMACION SON PROPIEDAD DE USO EXCLUSIVO Y CONFIDENCIAL DE REGAL-BELOIT CORPORATION. Y NO DEBERAN SER REVELADOS, DUPLICADOS, DISTRIBUIDOS O USARSE DE OTRA MANERA SIN EL CONSENTIMIENTO ESCRITO DE REGAL-BELOIT CORPORATION. -TODOS LOS DERECHOS RESERVADOS.	NUMERO DE DIBUJO: 18720601-001	ESCALA: NONE
		HOJA: 1

版本	ECO	编制	日期	批准	日期
C	ECO-0025427	T.HUANG	04-18-2012	B.C.SHEN	04-18-2012



- NOTES:
- CONDUIT BOX MAY BE ROTATED IN 90° INCREMENTS.
 - MOTOR IS SUITABLE FOR FIELD CONVERSION FROM AN F1 TO AN F2 CONDUIT BOX LOCATION.
 - MOTOR VENTILATION: AIR INTAKE THROUGH OPENINGS IN THE FACE OF EACH BRACKET AND EXHAUSTED THROUGH THE VENT SLOTS ON EACH END OF THE SHELL.

MOTOR DESCRIPTION:

3 PHASE OPEN DRIPPROOF STEEL SHELL 284T OR 286T MOUNTING. OTHER MOUNTING ORIENTATIONS ARE ACCEPTABLE; HOWEVER WHEN MOUNTED OTHER THAN HORIZONTAL; MOTOR WILL NOT BE DRIPPROOF AS DEFINED BY NEMA.

CERTIFICATION OF A.C. MOTORS		
CERTIFIED FOR		
SPEC. NO. _____	ORDER NO. _____	
ORDER I.D. _____	I.D._NO. _____	EMI EMI
TYPE _____	FRAME _____	H.P. _____
R.P.M. _____	VOLTS _____	PHASE _____
HERTZ _____	AMPS _____	CODE _____
REMARKS _____		
APPROVED BY _____ DATE: _____		

形位公差	除另有注明
— 平面度	尺寸公差如下:
— 直线度	英寸 X XX XXX XXXX
— 倾斜度	毫米 ±.1 ±.02 ±.005 ±.0005
— 垂直度	毫米 ±0.5 ±0.13 ±0.013
// 平行度	角度 ±.50 度
— 圆度	清理毛刺和尖棱
— 圆柱度	英寸 .003-.015 毫米 0.1-0.4
— 圆跳动	内圆角
— 位置度	英寸 .020 毫米 0.5
— 同轴度	表面粗糙度
— 对称度	英制 125 米制 3.2

ASME Y14.5M 1994

第三角投影	图底格式发布日期 11-11-2011
图底格式版本	G
机密: 本图纸及相关信息所有权归REGAL-BELOIT CORPORATION	
未经REGAL-BELOIT CORPORATION书面授权, 不得泄露、复制、传播或作其他用途。一版权所有	

绘图:	AJB	01-14-2004
批准:	JAS	01-14-2004
图底格式发布日期 11-11-2011		
图底格式版本		
G		

名称		OUTLINE	
S284T/S286T ODP EE STD		图号	
D		18720601-001	
比例		NONE	
图幅		页号	
NONE		1	

