

# PRODUCT INFORMATION PACKET



Model No: E513M2  
Catalog No: E513M2  
25 HP, General Purpose Motor, 3 phase, 1800 RPM, 200 V, S284T Frame, Drip Proof  
General Purpose Motors



Regal and Century are trademarks of Regal Rexnord Corporation or one of its affiliated companies.  
©2021 Regal Rexnord Corporation, All Rights Reserved. MC017097E





### Nameplate Specifications

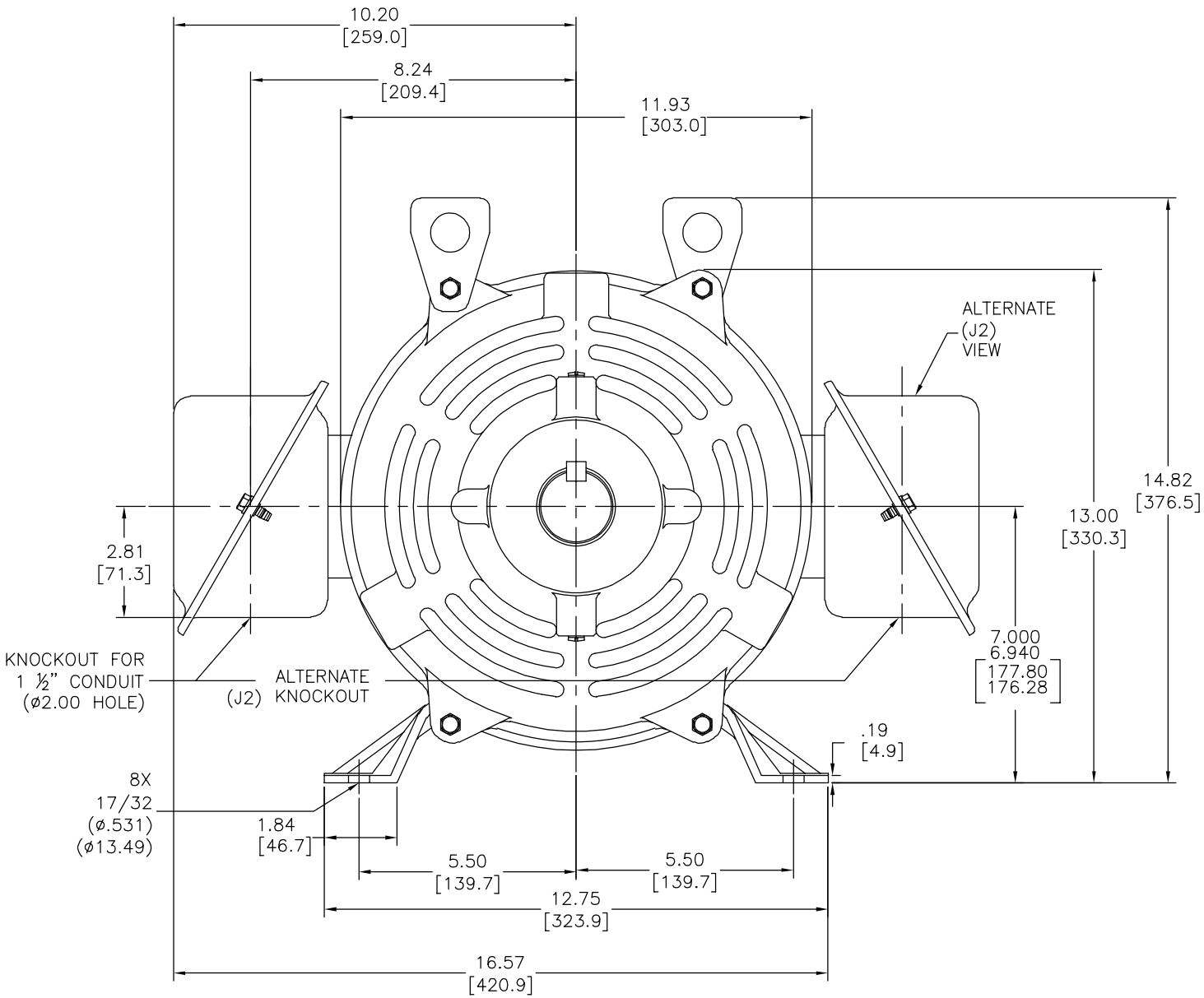
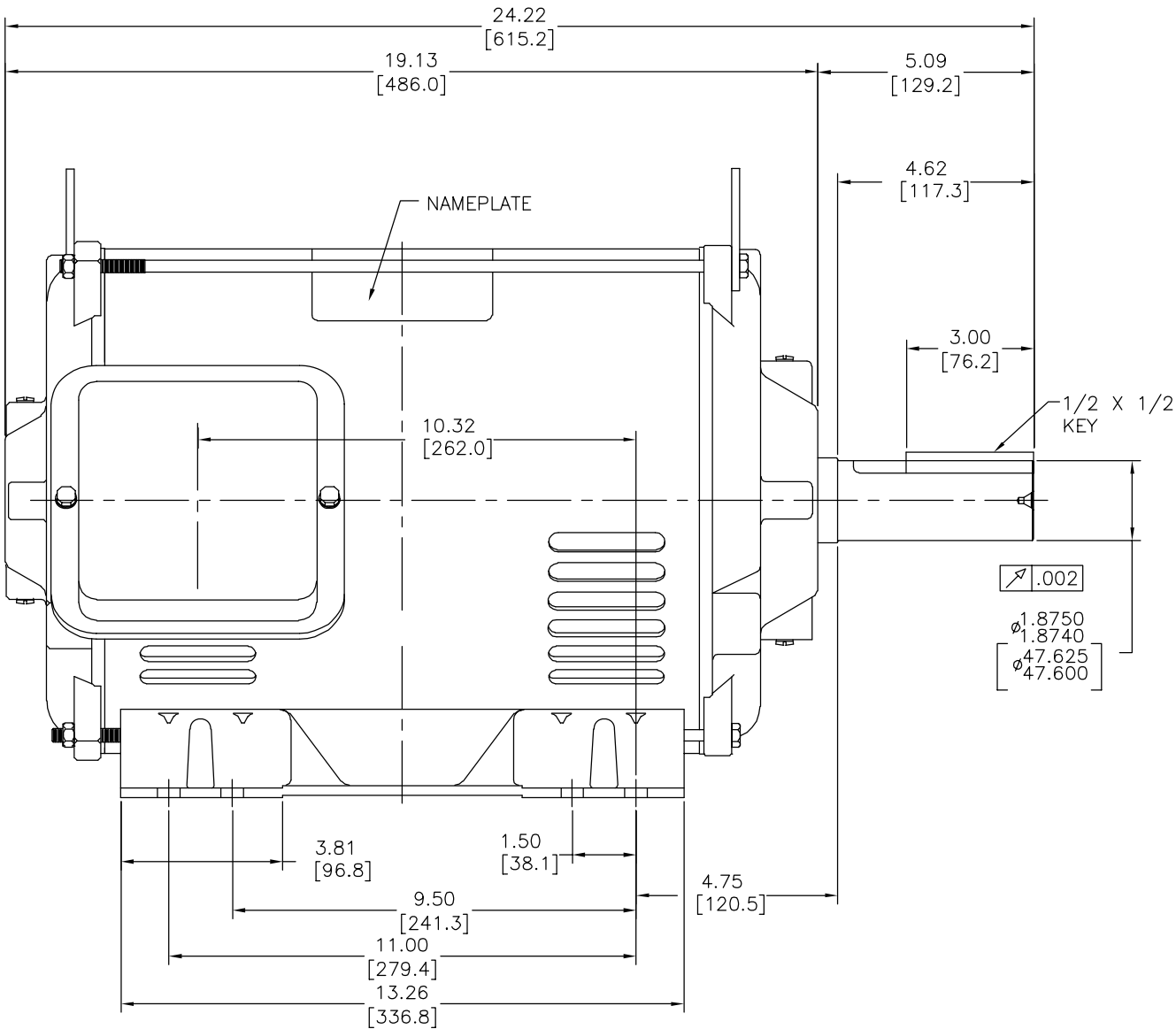
|                    |            |                     |            |
|--------------------|------------|---------------------|------------|
| Output HP          | 25.0 Hp    | Output KW           | 18.7 kW    |
| Frequency          | 60 Hz      | Voltage             | 200 V      |
| Current            | 70.0 A     | Speed               | 1765 rpm   |
| Service Factor     | 1.15       | Phase               | 3          |
| Duty               | Continuous | Insulation Class    | F          |
| Frame              | S284T      | Enclosure           | Drip Proof |
| Thermal Protection | None       | Ambient Temperature | 40 °C      |
| UL                 | Recognized | CSA                 | Y          |
| CE                 | N          | Number of Speeds    | 1          |

### Technical Specifications

|                       |              |                   |                  |
|-----------------------|--------------|-------------------|------------------|
| Electrical Type       | Three Phase  | Starting Method   | Across The Line  |
| Poles                 | 4            | Rotation          | Counterclockwise |
| Mounting              | Rigid Base   | Drive End Bearing | Ball             |
| Opp Drive End Bearing | Ball         | Frame Material    | Rolled Steel     |
| Shaft Type            | Keyed        | Overall Length    | 24.22 in         |
| Frame Length          | 14.00 in     | Shaft Diameter    | 1.875 in         |
| Shaft Extension       | 5.09 in      |                   |                  |
| Connection Drawing    | 80022803-S01 | Outline Drawing   | 18720601-001-S01 |

This is an uncontrolled document once printed or downloaded and is subject to change without notice. Date Created:10/07/2021

| REV | ECO         | REV BY  | DATE       | APPD     | DATE       |
|-----|-------------|---------|------------|----------|------------|
| C   | ECO-0025427 | T.HUANG | 04-18-2012 | B.C.SHEN | 04-18-2012 |



- NOTES:
- CONDUIT BOX MAY BE ROTATED IN 90° INCREMENTS.
  - MOTOR IS SUITABLE FOR FIELD CONVERSION FROM AN F1 TO AN F2 CONDUIT BOX LOCATION.
  - MOTOR VENTILATION: AIR INTAKE THROUGH OPENINGS IN THE FACE OF EACH BRACKET AND EXHAUSTED THROUGH THE VENT SLOTS ON EACH END OF THE SHELL.

MOTOR DESCRIPTION:

3 PHASE OPEN DRIPPROOF STEEL SHELL 284T OR 286T MOUNTING.  
OTHER MOUNTING ORIENTATIONS ARE ACCEPTABLE; HOWEVER WHEN MOUNTED OTHER THAN HORIZONTAL; MOTOR WILL NOT BE DRIPPROOF AS DEFINED BY NEMA.

|                               |                 |             |
|-------------------------------|-----------------|-------------|
| CERTIFICATION OF A.C. MOTORS  |                 |             |
| CERTIFIED FOR                 |                 |             |
| SPEC. NO. _____               | ORDER NO. _____ |             |
| ORDER I.D. _____              | I.D. NO. _____  | EMI EMI     |
| TYPE _____                    | FRAME _____     | H.P. _____  |
| R.P.M. _____                  | VOLTS _____     | PHASE _____ |
| HERTZ _____                   | AMPS _____      | CODE _____  |
| REMARKS _____                 |                 |             |
| APPROVED BY _____ DATE: _____ |                 |             |

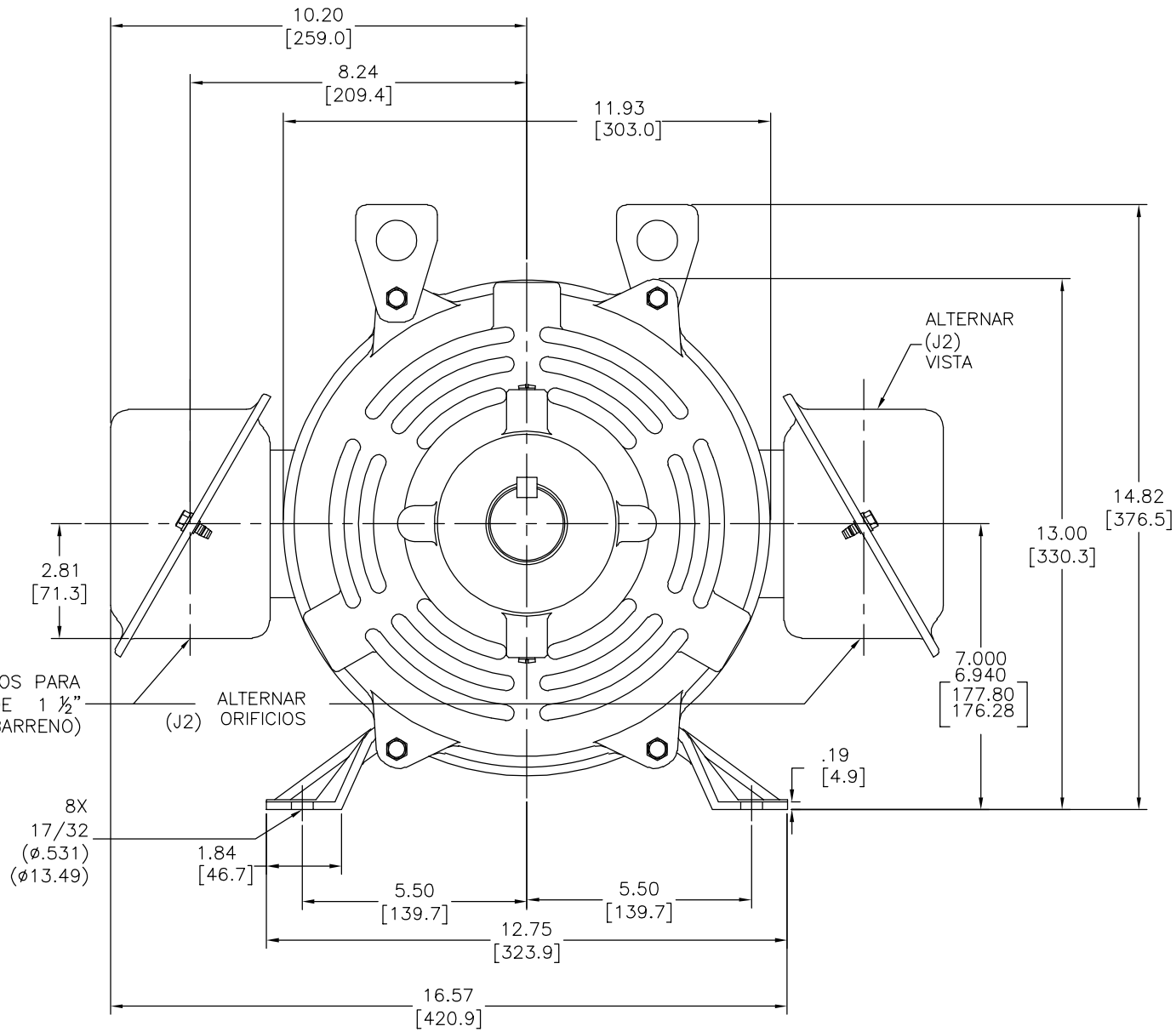
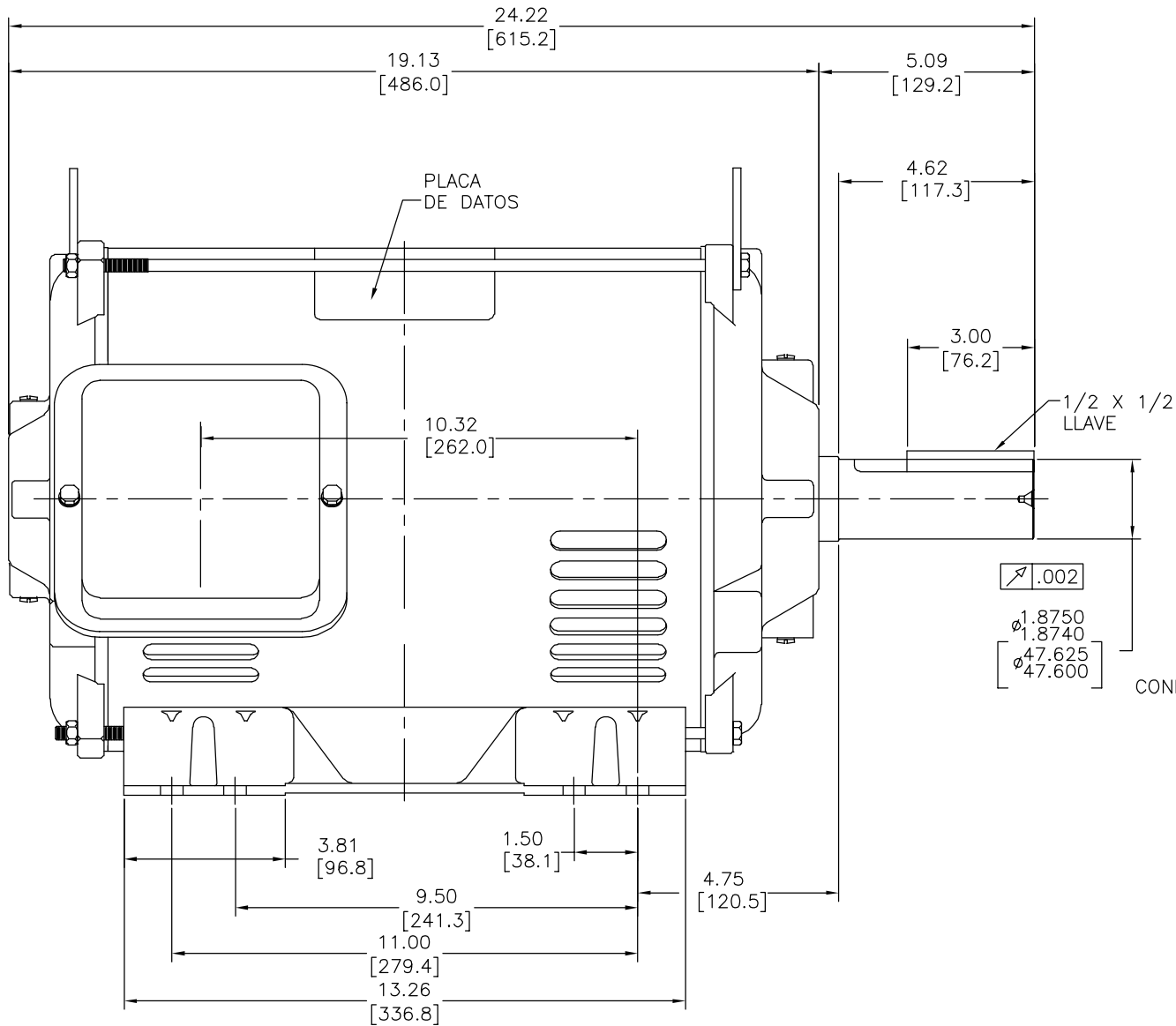
| GEOMETRIC CHARACTERISTICS & SYMBOLS |
|-------------------------------------|
| — FLATNESS                          |
| — STRAIGHTNESS                      |
| — ANGULARITY                        |
| — PERPENDICULARITY (SQUARENESS)     |
| — PARALLELISM                       |
| — ROUNDNESS (CIRCULARITY)           |
| — CYLINDRICITY                      |
| — PROFILE OF ANY SURFACE            |
| — PROFILE OF ANY LINE               |
| — RUNOUT                            |
| — TRUE POSITION                     |
| — CONCENTRICITY                     |
| — SYMMETRY                          |

| UNLESS OTHERWISE SPECIFIED        |
|-----------------------------------|
| DIM. TOLERANCES ARE AS FOLLOWS:   |
| INCH ±.1 ±.02 ±.005 ±.0005        |
| mm ±0.5 ±0.13 ±0.013              |
| ANG. ±.50 DEG                     |
| REMOVE BURRS & BREAK SHARP EDGES: |
| INCH .003-.015 mm 0.1-0.4         |
| CORNER FILLETS TO:                |
| INCH .020 mm 0.5                  |
| MACHINE SURFACES:                 |
| INCH 125 mm 3.2                   |

|                        |                     |
|------------------------|---------------------|
| DR BY: AJB             | 01-14-2004          |
| APPD: JAS              | 01-14-2004          |
| THIRD ANGLE PROJECTION | EDS DATE 11-11-2011 |
|                        | FORMAT REV G        |

|                        |                     |
|------------------------|---------------------|
| DESCRIPTION            |                     |
| OUTLINE                |                     |
| S284T/S286T ODP EE STD |                     |
| SIZE D                 | DWG NO 18720601-001 |
| SCALE NONE             | SHEET 1             |

|           |             |               |         |        |            |               |          |        |            |
|-----------|-------------|---------------|---------|--------|------------|---------------|----------|--------|------------|
| REVISION: | ECO         | REVISADO POR: | T.HUANG | FECHA: | 04-18-2012 | APROBADO POR: | B.C.SHEN | FECHA: | 04-18-2012 |
| C         | ECO-0025427 |               |         |        |            |               |          |        |            |



NOTAS:

- CAJA DE CONDUCTORES PUEDER ROTARSE EN INCREMENTOS DE 90°
- EL MOTOR ES EL ADECUADO PARA CONVERSION DE CAMPOS DESDE LA UBICACION AN F1 Y AN F2
- VENTILACION DE MOTOR: LA ENTRADA DE AIRE ES A TRAVEZ DE LOS ORIFICIOS EN LA CARA DE CADA TAPA Y EXTRAIDA A TRAVEZ DE LAS RANURAS DE VENTILACION AL FINAL DE CADA CARCAZA

DESCRIPCION DEL MOTOR:

ESCUDO 284T DE ACERO A PRUEBA DE GOTEO CON 3 FASES ABIERTAS. OTRO TIPO DE OPERACIONES DE MONTAGE ES ACEPTABLE; SIN EMBARGO CUANDO SEA MONTADO DE CUALQUIER OTRA FORMA MENOS HORIZONTALMENTE NO SERA A PRUEBA DE GOTEO COMO NEMA LO DEFINE.

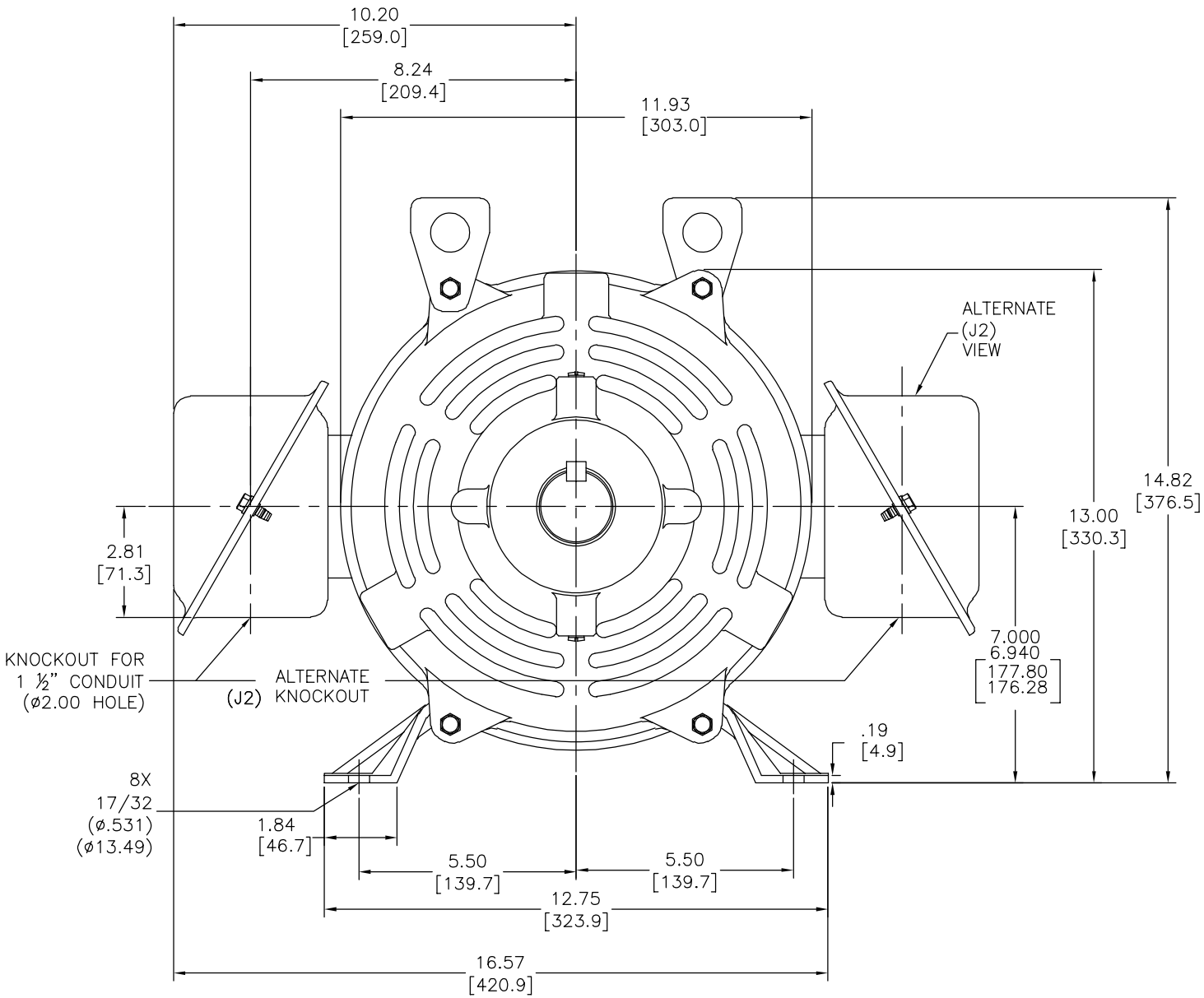
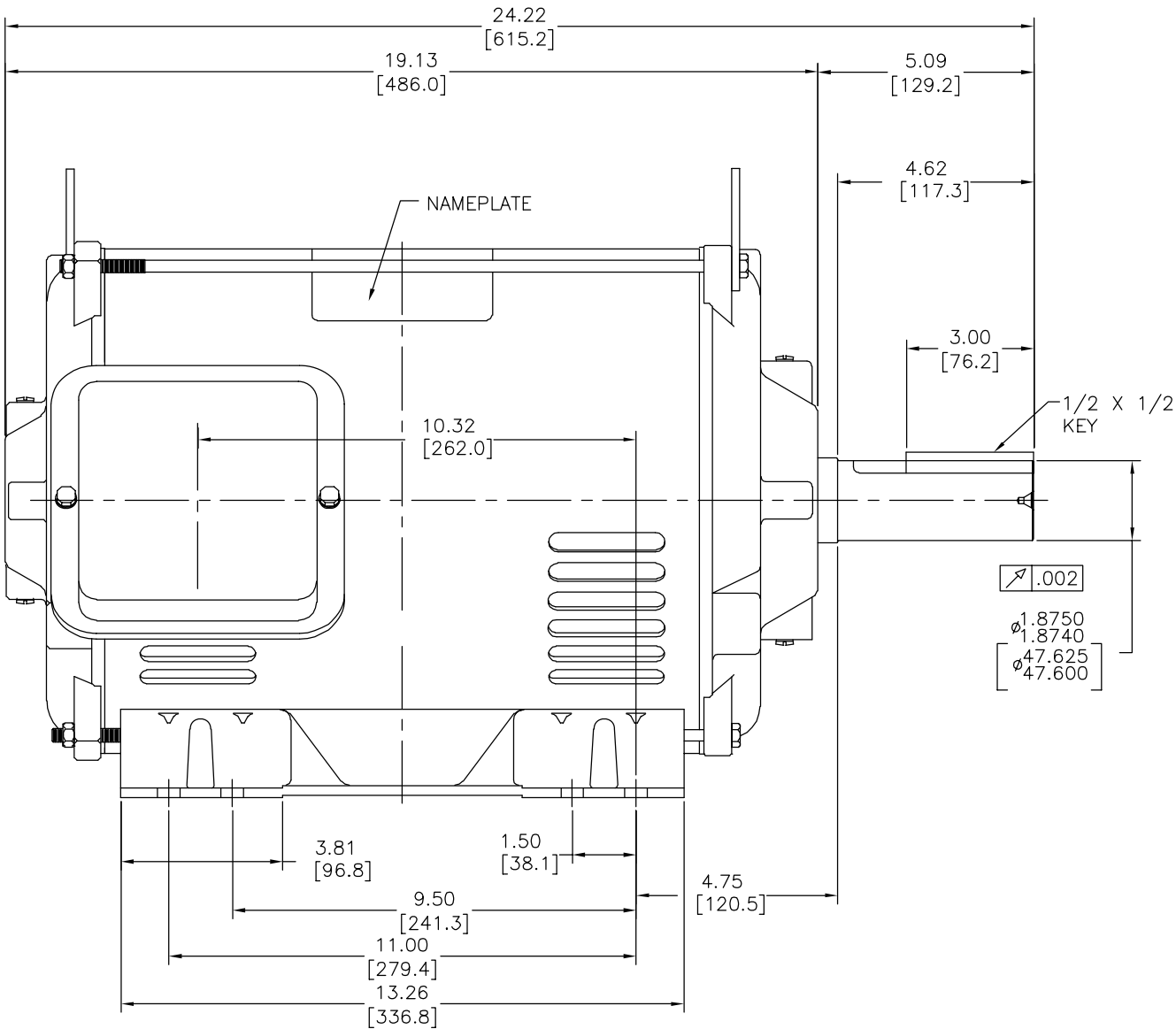
|                               |                 |             |
|-------------------------------|-----------------|-------------|
| CERTIFICATION OF A.C. MOTORS  |                 |             |
| CERTIFIED FOR                 |                 |             |
| SPEC. NO. _____               | ORDER NO. _____ |             |
| ORDER I.D. _____              | I.D. NO. _____  | EMI EMI     |
| TYPE _____                    | FRAME _____     | H.P. _____  |
| R.P.M. _____                  | VOLTS _____     | PHASE _____ |
| HERTZ _____                   | AMPS _____      | CODE _____  |
| REMARKS _____                 |                 |             |
| APPROVED BY _____ DATE: _____ |                 |             |

|   |                  |  |   |
|---|------------------|--|---|
| CARACTERISTICAS DE GEOMETRIA Y SIMBOLOS:<br>/ PLANICIDAD<br>- RECTITUD<br>/ ANGULARIDAD<br>L PERPENDICULARIDAD (A ESCUADRA)<br>// PARALELISMO<br>O REDONDEZ (CIRCULARIDAD)<br>H CILINDRICIDAD<br>= PERFIL DE CUALQUIER SUPERFICIE<br>/ PERFIL DE CUALQUIER LINEA<br>+ POSICION REAL<br>© CONCENTRICIDAD<br>= SIMETRIA | ASME Y14.5M 1994 | A MENOS QUE SE ESPECIFIQUE DE OTRA MANERA, LAS TOLERANCIAS DE LAS DIMS. SON LAS SIGUIENTES:<br>PULG. ±.1 ±.02 ±.005 ±.0005<br>mm ±0.5 ±0.13 ±0.013<br>ANG. ±.50 GRADOS<br>ELIMINAR REBABAS Y ORILLAS FILOSAS DEL BORDE.<br>PULG. .003-.015 mm 0.1-0.4<br>FILETEAR ESQUINA: PULG. .020 mm 0.5<br>MAQUINAR SUPERFICIES<br>PULG. 125 mm 3.2 | DIMENSIONES METRICAS MOSTRADAS [PARENTESIS] |
|---|------------------|--|---|

|   |     |  |
|---|-----|--|
| DIBUJADO POR:   | AJB | 01-14-2004                               |
| APROBADO POR:   | JAS | 01-14-2004                               |
| TERCER ANGULO DE PROYECCION   |     | FECHA EDS: 11-11-2011<br>REV. FORMATO: G |
| CONFIDENCIAL: ESTE DIBUJO Y SU INFORMACION SON PROPIEDAD DE USO EXCLUSIVO Y CONFIDENCIAL DE REGAL-BELOIT CORPORATION. Y NO DEBERAN SER REVELADOS, Duplicados, distribuidos o usarse de otra manera SIN EL CONSENTIMIENTO ESCRITO DE REGAL-BELOIT CORPORATION. -TODOS LOS DERECHOS RESERVADOS. |     |  |

|                        |      |                   |   |
|------------------------|------|-------------------|---|
| DESCRIPCION:           |      | OUTLINE           |   |
| S284T/S286T ODP EE STD |      | NUMERO DE DIBUJO: |   |
| D                      |      | 18720601-001      |   |
| ESCALA:                | NONE | HOJA:             | 1 |

|    |             |         |            |          |            |
|----|-------------|---------|------------|----------|------------|
| 版本 | ECO         | 编制      | 日期         | 批准       | 日期         |
| C  | ECO-0025427 | T.HUANG | 04-18-2012 | B.C.SHEN | 04-18-2012 |



- NOTES:
- CONDUIT BOX MAY BE ROTATED IN 90° INCREMENTS.
  - MOTOR IS SUITABLE FOR FIELD CONVERSION FROM AN F1 TO AN F2 CONDUIT BOX LOCATION.
  - MOTOR VENTILATION: AIR INTAKE THROUGH OPENINGS IN THE FACE OF EACH BRACKET AND EXHAUSTED THROUGH THE VENT SLOTS ON EACH END OF THE SHELL.

MOTOR DESCRIPTION:

3 PHASE OPEN DRIPPROOF STEEL SHELL 284T OR 286T MOUNTING.  
OTHER MOUNTING ORIENTATIONS ARE ACCEPTABLE; HOWEVER WHEN MOUNTED OTHER THAN HORIZONTAL; MOTOR WILL NOT BE DRIPPROOF AS DEFINED BY NEMA.

|                               |                 |             |
|-------------------------------|-----------------|-------------|
| CERTIFICATION OF A.C. MOTORS  |                 |             |
| CERTIFIED FOR                 |                 |             |
| SPEC. NO. _____               | ORDER NO. _____ |             |
| ORDER I.D. _____              | I.D._NO. _____  | EMI EMI     |
| TYPE _____                    | FRAME _____     | H.P. _____  |
| R.P.M. _____                  | VOLTS _____     | PHASE _____ |
| HERTZ _____                   | AMPS _____      | CODE _____  |
| REMARKS _____                 |                 |             |
| APPROVED BY _____ DATE: _____ |                 |             |

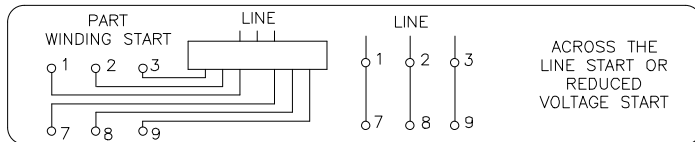
|       |
|-------|
| 形位公差  |
| — 平面度 |
| — 直线度 |
| — 倾斜度 |
| — 垂直度 |
| — 平行度 |
| — 圆度  |
| — 圆柱度 |
| — 圆跳动 |
| — 位置度 |
| — 同轴度 |
| — 对称度 |

ASME Y14.5M 1994

|                          |
|--------------------------|
| 除另有注明<br>尺寸公差如下:         |
| 英寸 X XX XXX XXXX         |
| 毫米 ±.1 ±.02 ±.005 ±.0005 |
| 角度 ±.50 度                |
| 清理毛刺和尖棱                  |
| 英寸 .003-.015 毫米 0.1-0.4  |
| 内圆角                      |
| 英寸 .020 毫米 0.5           |
| 表面粗糙度                    |
| 英制 125 米制 3.2            |
| 米制尺寸显示在 [ ]              |

|  |                                 |            |
|--|---------------------------------|------------|
| 绘图:  | AJB                             | 01-14-2004 |
| 批准:  | JAS                             | 01-14-2004 |
| 第三角投影  | 图底格式发布日期 11-11-2011<br>图底格式版本 G |            |
| 机密: 本图纸及相关信息所有权归REGAL-BELOIT CORPORATION<br>未经REGAL-BELOIT CORPORATION书面授权, 不得泄露、<br>复制、传播或作其他用途。一版权所有 |                                 |            |


|    |      |                                   |              |
|----|------|-----------------------------------|--------------|
| 名称 |      | OUTLINE<br>S284T/S286T ODP EE STD |              |
| 图幅 | D    | 图号                                | 18720601-001 |
| 比例 | NONE | 页号                                | 1            |



80022803

## NOTES:

1. DRAWING FOR REPRESENTATION ONLY. ACTUAL CONNECTION DIAGRAM IS COMPUTER GENERATED AND PRINTED ON ADHESIVE NAMEPLATE 800163.
2. RESERVED FOR THREE PHASE CONNECTIONS.

|  |                                   |                |            | TOLERANCES<br>UNLESS SPECIFIED |        | REGAL-BELOIT  | DRAWN JVD 03-30-2021 |                          |
|--|-----------------------------------|----------------|------------|--------------------------------|--------|--|----------------------|--------------------------|
|  |                                   |                |            | DEC.                           | INCHES |  | CHK                  | AJAY 03-30-2021          |
|  |                                   |                |            | .X                             | ±.1    | TITLE CONNECTION DIAGRAM   | APPD                 | AJAY 03-30-2021          |
|  |                                   |                |            | .XX                            | ±.02   |  | SCALE                | 1=1                      |
|  |                                   |                |            | .XXX                           | ±.005  |  | REF                  | 800228                   |
| C  | UPDATED REGAL LOGO IN TITLE BLOCK | JVD 03-30-2021 | AJAY .XXXX | ±.0005                         | MAT'L. |  | FMF                  |                          |
| NO.  | REVISION                          | BY & DATE      | CHK        | ANG                            | FINISH |  | PREV                 |                          |
| THIS DRAWING IN DESIGN AND DETAIL IS OUR PROPERTY AND MUST NOT BE USED EXCEPT IN CONNECTION WITH OUR WORK ALL RIGHTS OF DESIGN AND INVENTION ARE RESERVED THIS IS AN ELECTRONICALLY GENERATED DOCUMENT - DO NOT SCALE THIS PRINT |                                   |                |            |                                |        | RFP 03-30-2021 CAD FILE 80022803-S01   | SIZE A               | DRAWING NO. 80022803-S01 |
|  |                                   |                |            |                                |        | DIST LB-PR   |                      | PAGE OF REV. C           |