

PRODUCT INFORMATION PACKET



Model No: E495M2

Catalog No: E495M2

25 HP, General Purpose Motor, 3 phase, 3600 RPM, 230/460 V, S256T Frame, Drip Proof
General Purpose Motors



Regal and Century are trademarks of Regal Rexnord Corporation or one of its affiliated companies.

©2021 Regal Rexnord Corporation, All Rights Reserved. MC017097E





Nameplate Specifications

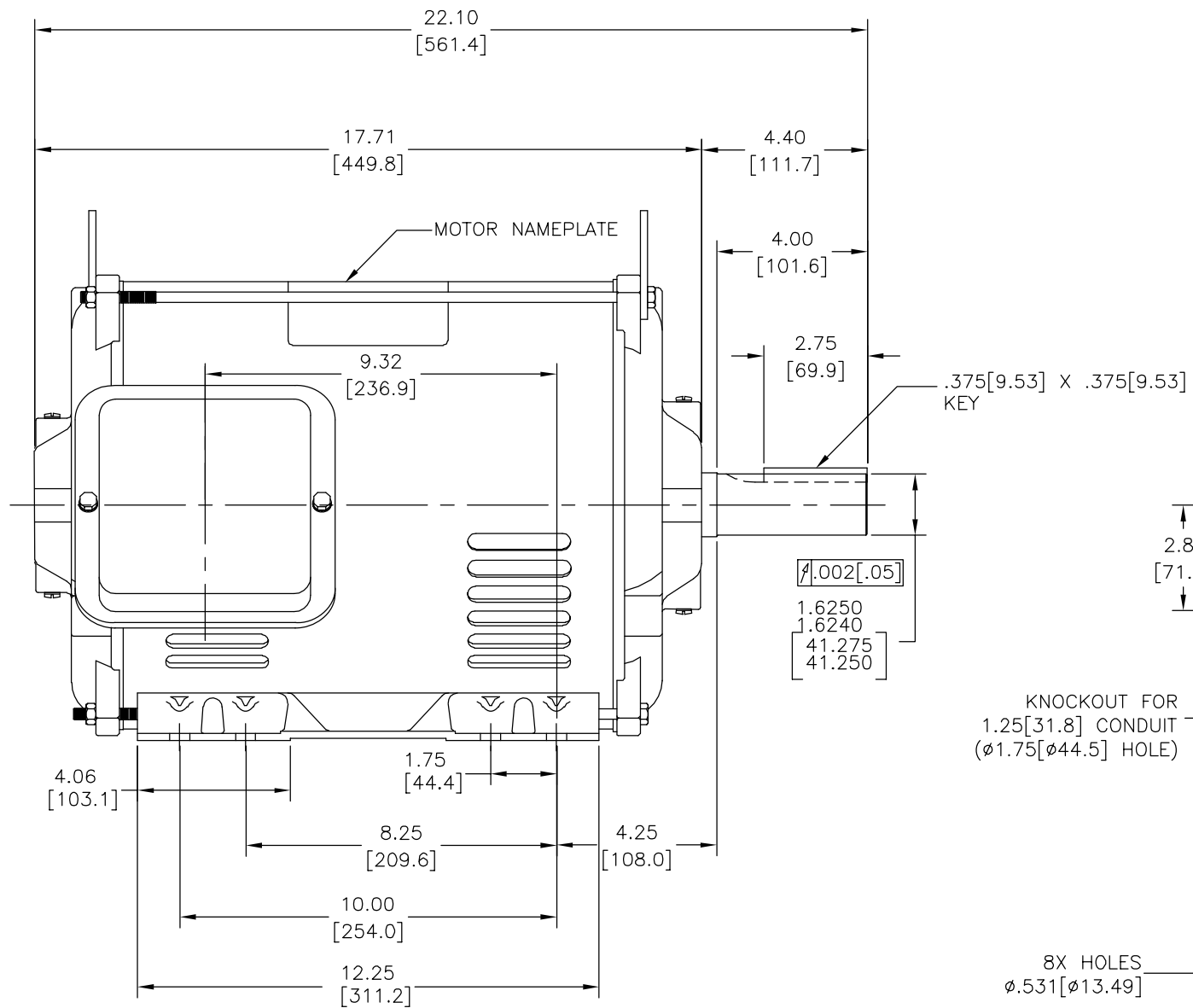
Output HP	25.0 Hp	Output KW	18.7 kW
Frequency	60 Hz	Voltage	230/460 V
Current	57.0/28.5 A	Speed	3530 rpm
Service Factor	1.15	Phase	3
Duty	Continuous	Insulation Class	F
Frame	S256T	Enclosure	Drip Proof
Thermal Protection	None	Ambient Temperature	40 °C
UL	Recognized	CSA	Y
CE	N	Number of Speeds	1

Technical Specifications

Electrical Type	Three Phase	Starting Method	Across The Line
Poles	2	Rotation	Reversible
Mounting	Rigid Base	Drive End Bearing	Ball
Opp Drive End Bearing	Ball	Frame Material	Rolled Steel
Shaft Type	Keyed	Overall Length	22.10 in
Frame Length	13.00 in	Shaft Diameter	1.625 in
Shaft Extension	4.4 in		
Connection Drawing	80022802.PCX	Outline Drawing	E495M2-S01

This is an uncontrolled document once printed or downloaded and is subject to change without notice. Date Created:10/12/2021

REV	ECO	REV BY	DATE	APPD	DATE
A	0029142	I.LOPEZ	10-30-2012	H.SANCHEZ	10-30-2012

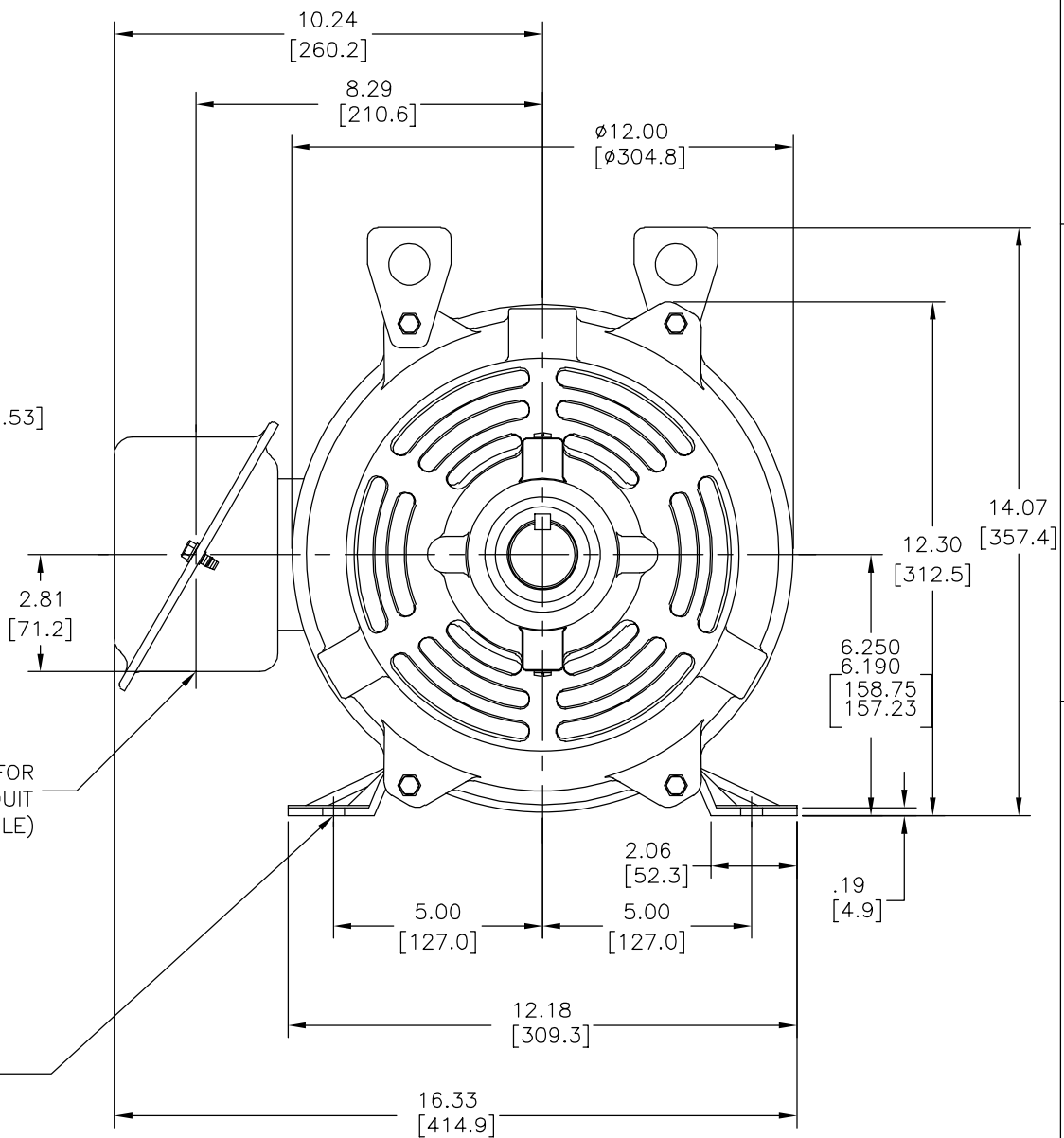


NOTES:

1. CONDUIT BOX MAY BE ROTATED IN 90° INCREMENTS.
2. MOTOR IS SUITABLE FOR FIELD CONVERSION FROM AN F1 TO AN F2 CONDUIT BOX LOCATION.
3. MOTOR VENTILATION: AIR INTAKE THROUGH OPENINGS IN THE FACE OF EACH BRACKET AND EXHAUSTED THROUGH THE VENT SLOTS ON EACH END OF THE SHELL.

KNOCKOUT FOR
1.25[31.8] CONDUIT
(ϕ 1.75[ϕ 44.5] HOLE)

8X HOLES
 ϕ .531[ϕ 13.49]



MOTOR DESCRIPTION:

3 PHASE OPEN DRIPPROOF STEEL SHELL 254T OR 256T MOUNTING.
OTHER MOUNTING ORIENTATIONS ARE ACCEPTABLE; HOWEVER WHEN MOUNTED OTHER THAN HORIZONTAL; MOTOR WILL NOT BE DRIPPROOF AS DEFINED BY NEMA.

GEOMETRIC CHARACTERISTICS & SYMBOLS
□ FLATNESS
— STRAIGHTNESS
∠ ANGULARITY
⊥ PERPENDICULARITY (SQUARENESS)
// PARALLELISM
○ ROUNDNESS (CIRCULARITY)
⌀ CYLINDRICITY
△ PROFILE OF ANY SURFACE
∩ PROFILE OF ANY LINE
⌀ RUNOUT
⊕ TRUE POSITION
◎ CONCENTRICITY
≡ SYMMETRY

ASME Y14.5M 1994

UNLESS OTHERWISE SPECIFIED
DIM. TOLERANCES ARE AS FOLLOWS:
INCH X XX XXX XXXX
mm \pm 0.1 \pm 0.2 \pm 0.005 \pm 0.0005
mm \pm 0.5 \pm 0.13 \pm 0.013
ANG. \pm 50 DEG
REMOVE BURRS & BREAK SHARP EDGES:
INCH .003-.015 mm 0.1-0.4
CORNER FILLETS TO:
INCH .020 mm 0.5
MACHINE SURFACES:
INCH 125 mm 3.2

METRIC DIMS. SHOWN IN [BRACKETS]

DR BY:

I.LOPEZ

10-30-2012

APPD:

D.JAMORA

10-30-2012

THIRD ANGLE PROJECTION



EDS DATE 11-11-2011

FORMAT REV H

CONFIDENTIAL: THIS DRAWING AND ITS INFORMATION ARE THE EXCLUSIVE AND CONFIDENTIAL PROPERTY OF REGAL-BELOIT CORPORATION AND ARE NOT TO BE DISCLOSED, DUPLICATED, DISTRIBUTED OR OTHERWISE USED WITHOUT THE WRITTEN CONSENT OF REGAL-BELOIT CORPORATION.
-ALL RIGHTS RESERVED.

REGAL**REGAL-BELOIT CORPORATION**

DESCRIPTION

MODEL-IHP
OUTLINE

SIZE

C

DWG NO

E495M2

SCALE

NONE

SHEET

1

4

3

2

1

REVISION:	ECO	REVISADO POR:	FECHA:	APROBADO POR:	FECHA:
A	0029142	I.LOPEZ	10-30-2012	H.SANCHEZ	10-30-2012

D

D

C

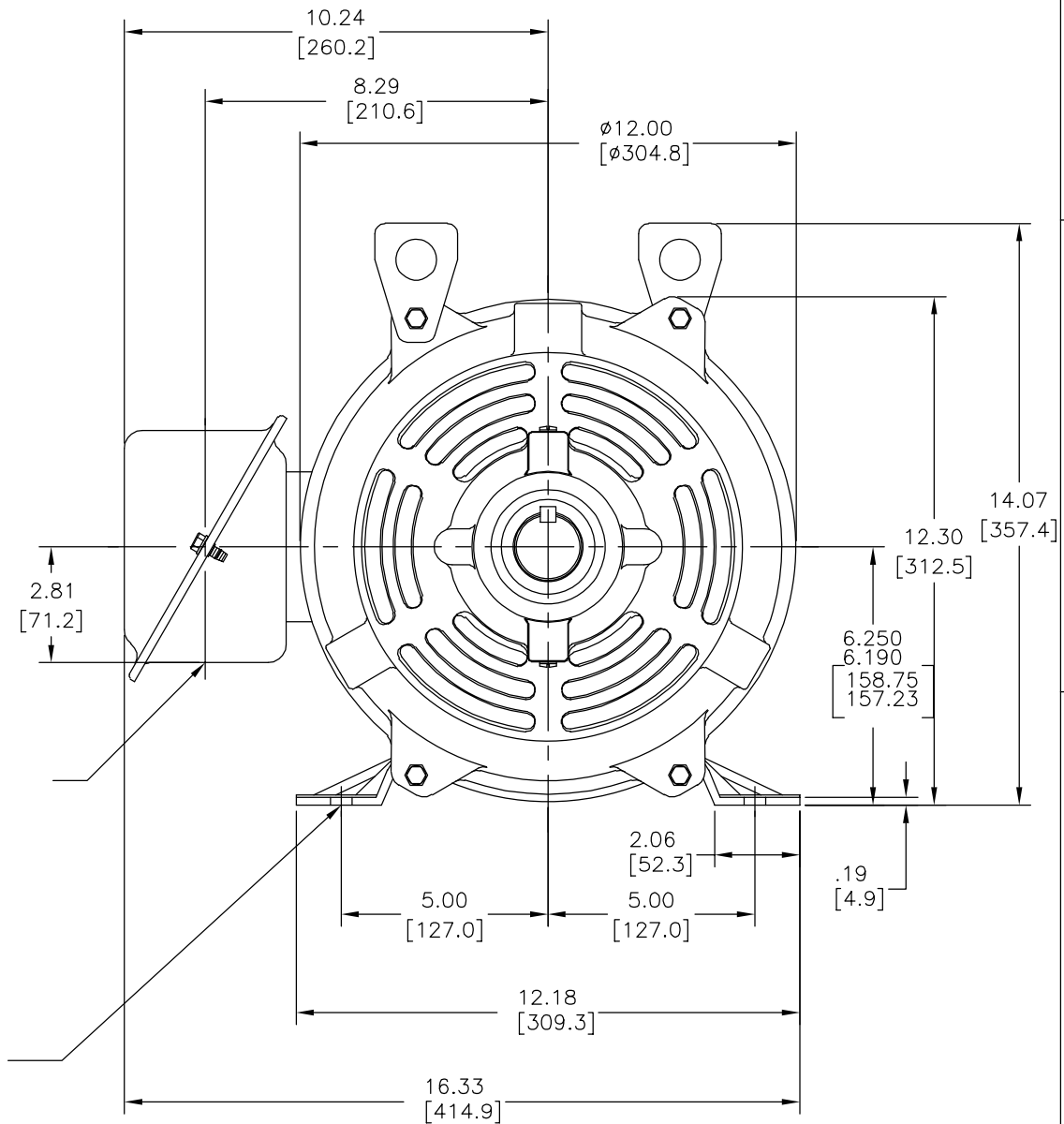
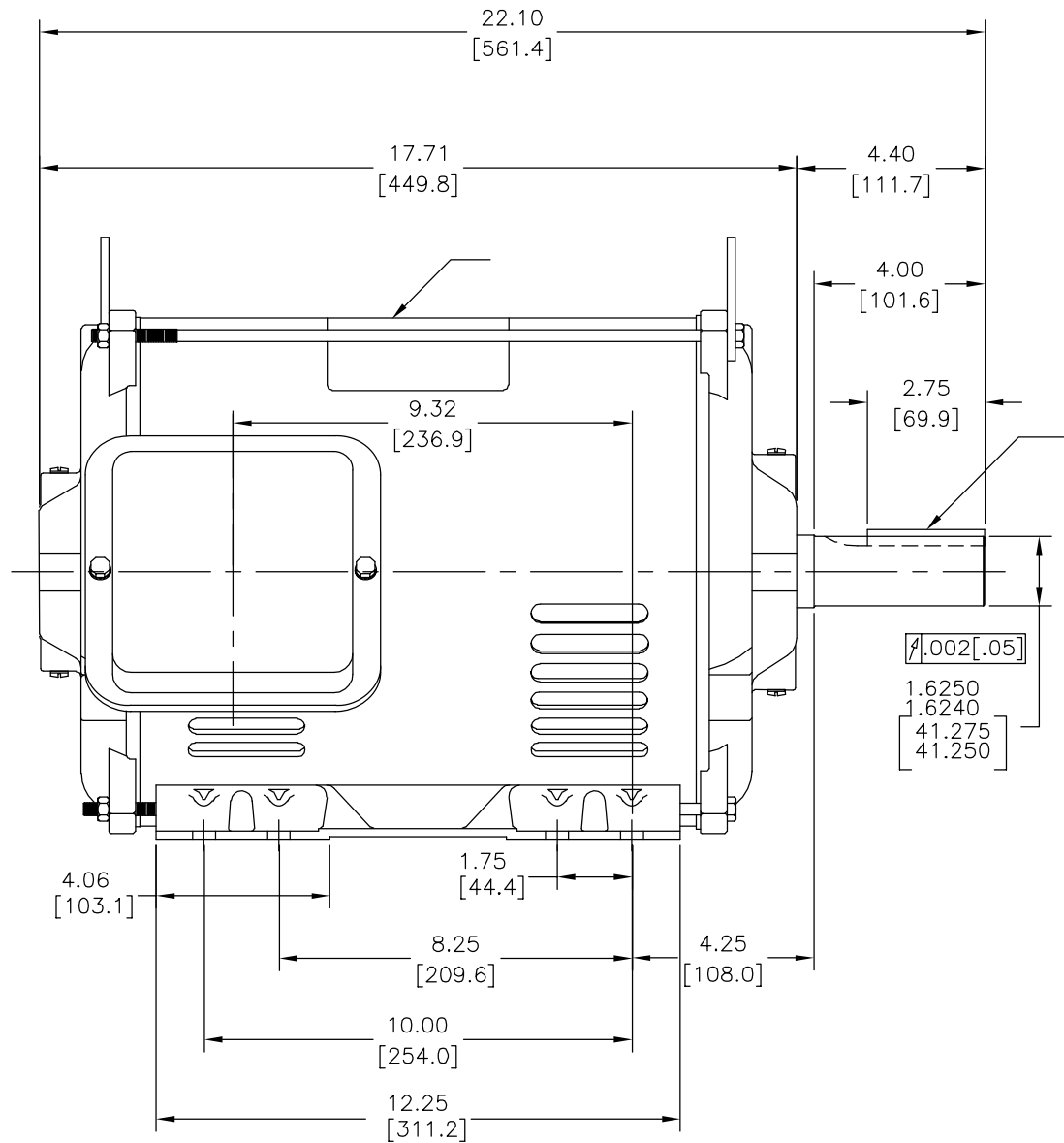
C

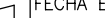
B

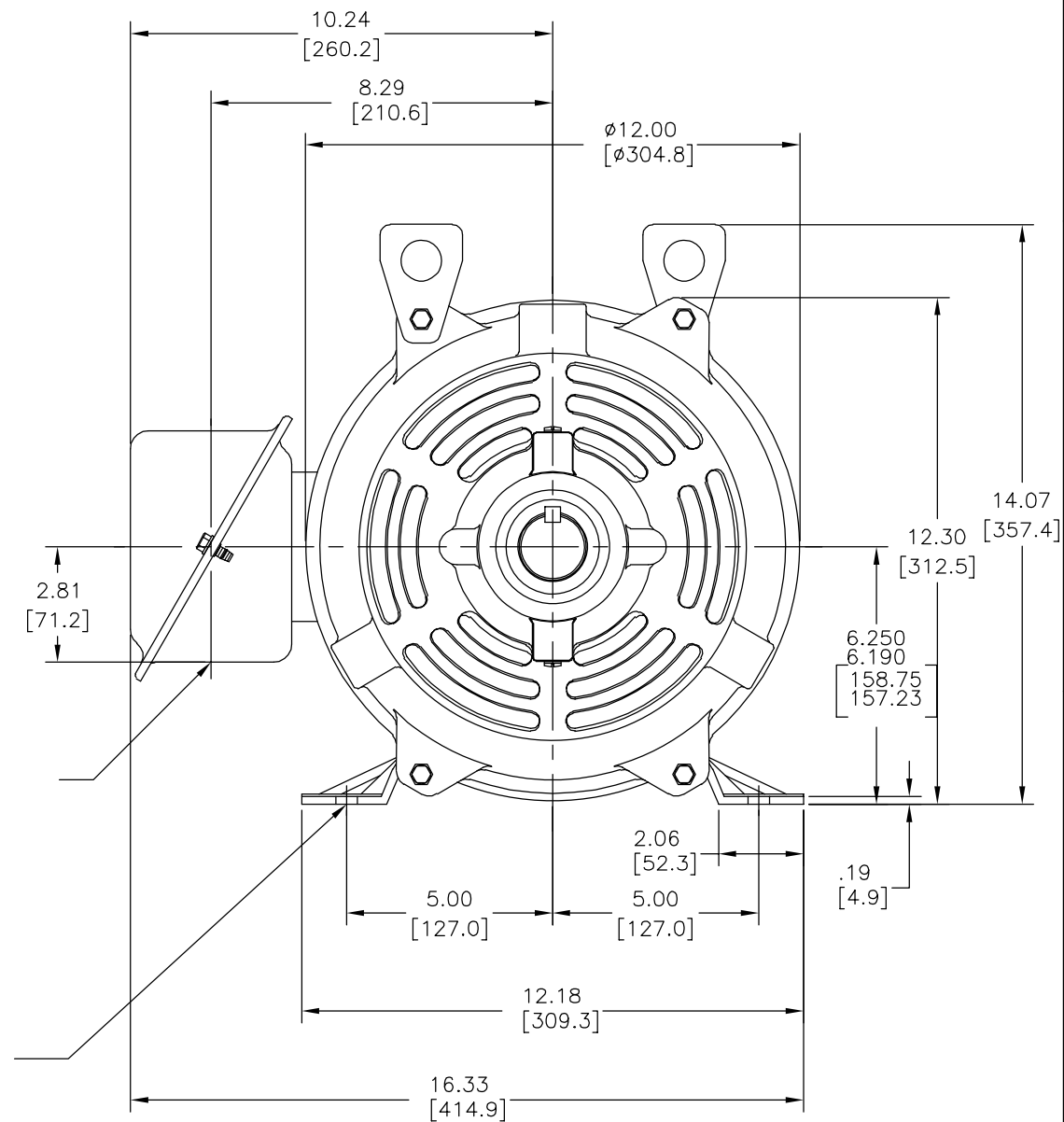
B

A

A



CARACTERISTICAS DE GEOMETRIA Y SIMBOLOS ✓ PLANICIDAD — RECTITUD ∠ ANGULARIDAD ⊥ PERPENDICULARIDAD (A ESCUADRA) // PARALELISMO ○ REDONDEZ (CIRCULARIDAD) ⌀ CILINDRICIDAD △ PERFIL DE CUALQUIER SUPERFICIE ∧ PERFIL DE CUALQUIER LINEA ∇ VARIACION ⊕ POSICION REAL ◎ CONCENTRICIDAD ≡ SIMETRIA ASME Y14.5M 1994	A MENOS QUE SE ESPECIFIQUE DE OTRA MANERA, LAS TOLERANCIAS DE LAS DIMS. SON LAS SIGUIENTES: X XX XXX XXXX PULG ±.1 ±.02 ±.005 ±.0005 mm ±0.5 ±0.13 ±0.013 ANG. ±.50 GRADOS ELIMINAR REBABAS Y ORILLAS FILOSAS DEL BORDE. PULG .003-.015 mm 0.1-0.4 FILETEAR ESQUINA: PULG .020 mm 0.5 MAQUINAR SUPERFICIES PULG 125 mm 3.2 DIMS METRICAS MOSTRADAS [PARENTESIS]	DIBUJADO POR: I.LOPEZ	10-30-2012	<div><div>REGAL</div><div>REGAL-BELOIT CORPORATION</div></div>			
		APROBADO POR: D.JAMORA	10-30-2012				
		TERCER ANGULO DE PROYECCION		FECHA EDS: 11-11-2011	DESCRIPCION: MODEL-IHP OUTLINE		
				REV. FORMATO: H			
		CONFIDENCIAL: ESTE DIBUJO Y SU INFORMACION SON PROPIEDAD DE USO EXCLUSIVO Y CONFIDENCIAL DE REGAL-BELOIT CORPORATION. Y NO DEBERAN SER REVELADOS, DUPLICADOS, DISTRIBUIDOS O USARSE DE OTRA MANERA SIN EL CONSENTIMIENTO ESCRITO DE REGAL-BELOIT CORPORATION. -TODOS LOS DERECHOS RESERVADOS.			TAMAÑO: C	NUMERO DE DIBUJO: E495M2	
			ESCALA:NONE		HOJA: 1		



形位公差 □ 平面度 ▨ 直线度 ∠ 倾斜度 ⊥ 垂直度 // 平行度 ○ 圆度 ⌀ 圆柱度 面轮廓度 线轮廓度 圆跳动 位置度 同轴度 对称度	除另有注明 尺寸公差如下: 英寸 $\begin{matrix} X \\ \pm .1 \end{matrix}$ $\begin{matrix} XX \\ \pm .02 \end{matrix}$ $\begin{matrix} XXX \\ \pm .005 \end{matrix}$ $\begin{matrix} XXXX \\ \pm .0005 \end{matrix}$ 毫米 ± 0.5 ± 0.13 ± 0.013 角度 $\pm .50$ 度 清理毛刺和尖棱 英寸 $.003-.015$ 毫米 $0.1-0.4$ 内圆角 英寸 $.020$ 毫米 0.5 表面粗糙度 英制 125 米制 3.2	绘图: I.LOPEZ 批准: D.JAMORA 第三角投影 	10-30-2012 10-30-2012 图纸格式发布日期 11-11-2011 图纸格式版本 H	名称 REGAL REGAL-BELOIT CORPORATION MODEL-IHP OUTLINE 图幅 C 图号 E495M2	比例 NONE 页号 1
	米制尺寸显示在 []	机密: 本图纸及相关信息所有权归 REGAL-BELOIT CORPORATION. 未经 REGAL-BELOIT CORPORATION 书面授权, 不得泄露、 复制、传播或作其他用途。--版权所有			