

PRODUCT INFORMATION PACKET



Model No: E494M2

Catalog No: E494M2

20.0 HP General Purpose Motor, 3 phase, 3600 RPM, 230/460 V, 254T Frame, ODP
General Purpose Motors



Regal and Century are trademarks of Regal Rexnord Corporation or one of its affiliated companies.
©2021 Regal Rexnord Corporation, All Rights Reserved. MC017097E





Nameplate Specifications

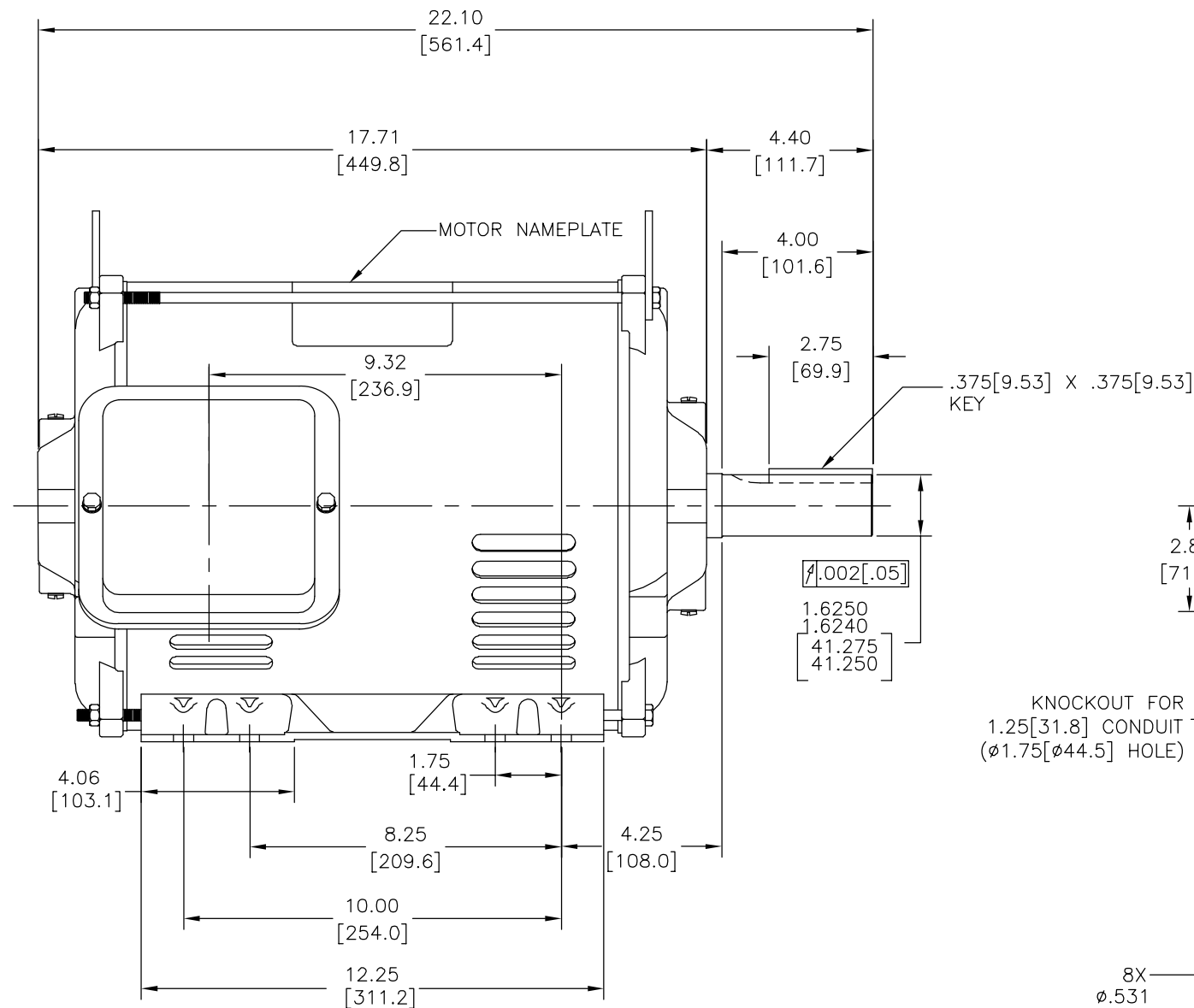
Output HP	20.0 Hp	Output KW	14.9 kW
Frequency	60 Hz	Voltage	230/460 V
Current	48/24 A	Speed	3535 rpm
Service Factor	1.15	Phase	3
Duty	Continuous	Insulation Class	F
Frame	S254T	Enclosure	Drip Proof
Thermal Protection	None	Ambient Temperature	40 °C
UL	Recognized	CSA	Y
CE	N	Number of Speeds	1

Technical Specifications

Electrical Type	Three Phase	Starting Method	Across The Line
Poles	2	Rotation	Reversible
Mounting	Rigid Base	Drive End Bearing	Ball
Opp Drive End Bearing	Ball	Frame Material	Rolled Steel
Shaft Type	Keyed	Overall Length	22.10 in
Frame Length	13.00 in	Shaft Diameter	1.625 in
Shaft Extension	4.4 in		
Connection Drawing	80022802.PCX	Outline Drawing	E494M2-S01

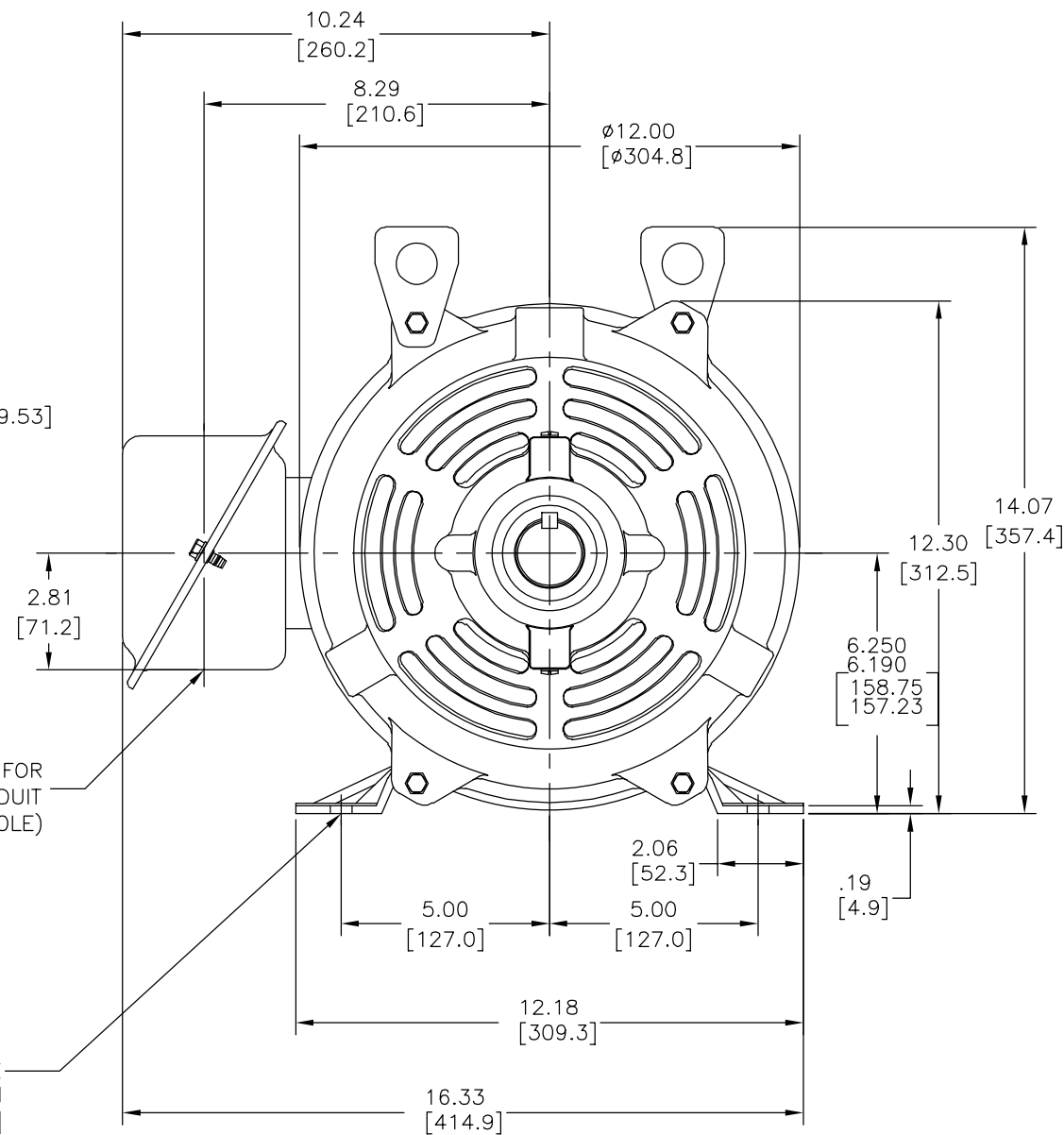
This is an uncontrolled document once printed or downloaded and is subject to change without notice. Date Created:10/12/2021

REV	ECO	REV BY	DATE	APPD	DATE
A	0029141	I.LOPEZ	10-30-2012	H.SANCHEZ	10-30-2012



KNOCKOUT FOR
1.25 [31.8] CONDUIT
(ϕ 1.75 [44.5] HOLE)

8X
 ϕ .531
[ϕ 13.49]
HOLES



- NOTES:
1. CONDUIT BOX MAY BE ROTATED IN 90° INCREMENTS.
 2. MOTOR IS SUITABLE FOR FIELD CONVERSION FROM AN F1 TO AN F2 CONDUIT BOX LOCATION.
 3. MOTOR VENTILATION: AIR INTAKE THROUGH OPENINGS IN THE FACE OF EACH BRACKET AND EXHAUSTED THROUGH THE VENT SLOTS ON EACH END OF THE SHELL.

MOTOR DESCRIPTION:
3 PHASE OPEN DRIPPROOF STEEL SHELL 254T OR 256T MOUNTING.
OTHER MOUNTING ORIENTATIONS ARE ACCEPTABLE; HOWEVER WHEN MOUNTED OTHER THAN HORIZONTAL; MOTOR WILL NOT BE DRIPPROOF AS DEFINED BY NEMA.

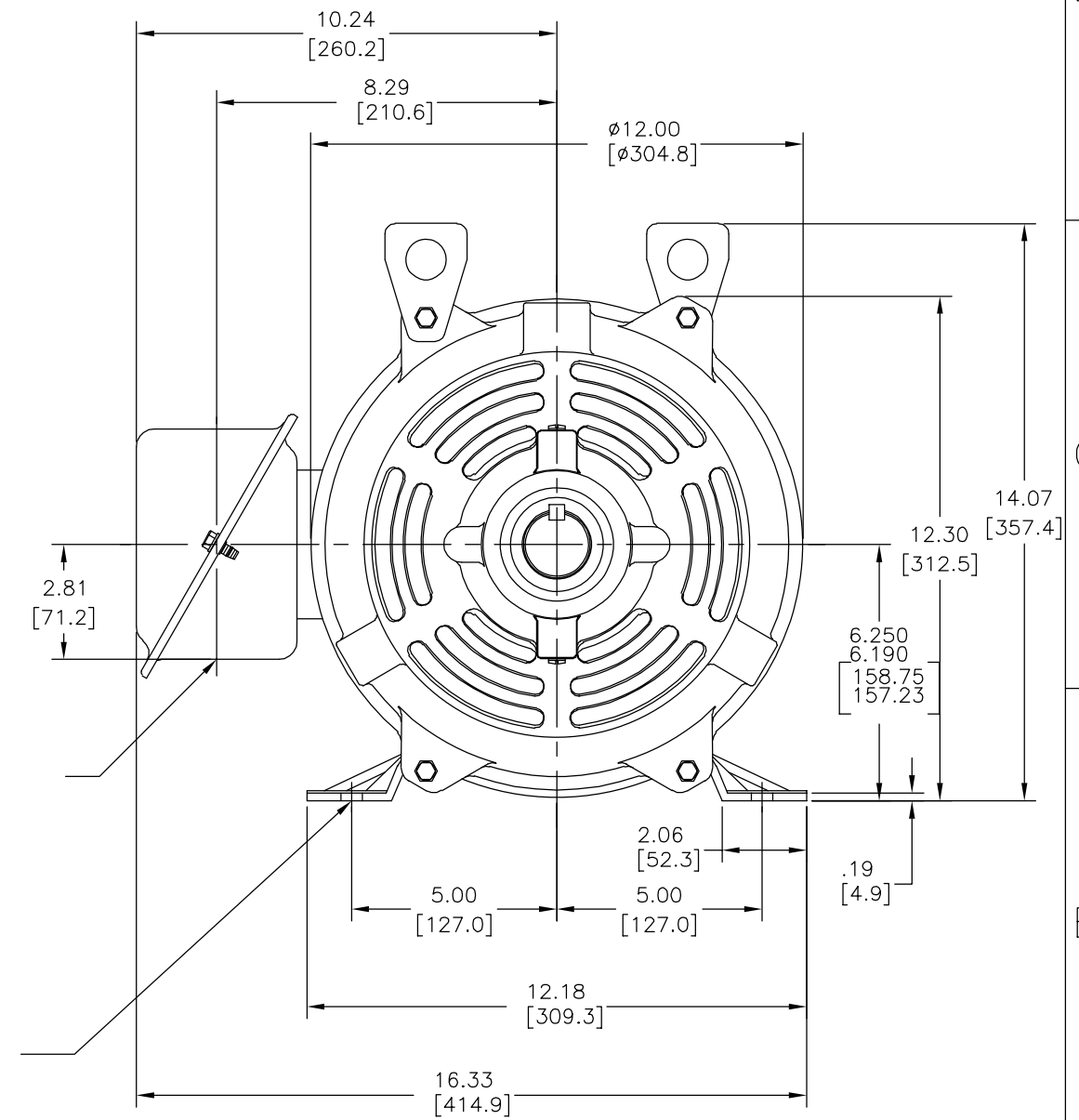
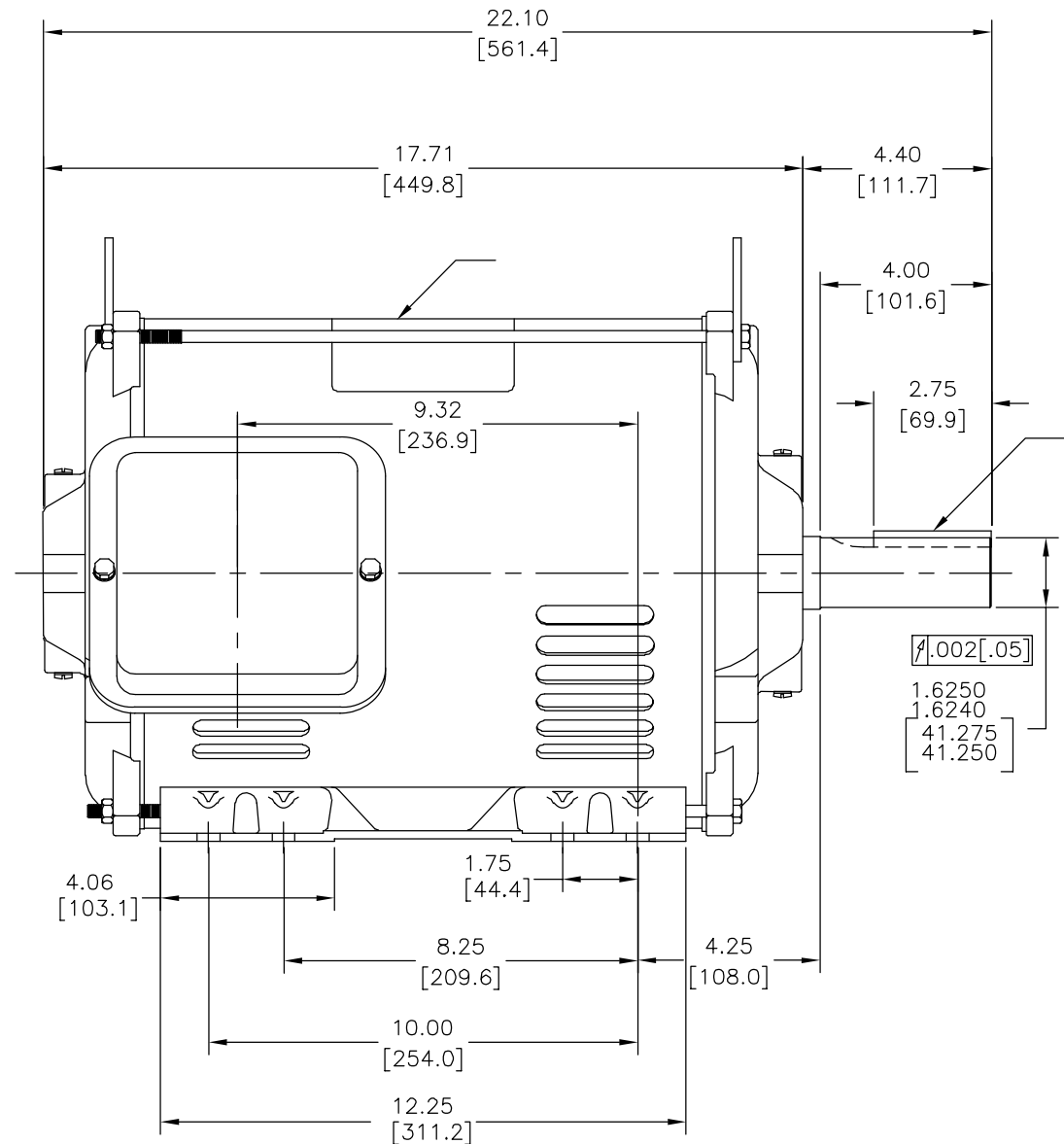
GEOMETRIC CHARACTERISTICS & SYMBOLS	
\square FLATNESS	UNLESS OTHERWISE SPECIFIED
— STRAIGHTNESS	DIM. TOLERANCES ARE AS FOLLOWS:
\sphericalangle ANGULARITY	INCH X XX XXX XXXX
\perp PERPENDICULARITY (SQUARENESS)	mm \pm 0.1 \pm 0.02 \pm 0.005 \pm 0.0005
\parallel PARALLELISM	mm \pm 0.5 \pm 0.13 \pm 0.013
\bigcirc ROUNDNESS (CIRCULARITY)	ANG. \pm 50 DEG
ϕ CYLINDRICITY	REMOVE BURRS & BREAK SHARP EDGES:
Δ PROFILE OF ANY SURFACE	INCH .003-.015 mm 0.1-0.4
\sim PROFILE OF ANY LINE	CORNER FILLETS TO:
R RUNOUT	INCH .020 mm 0.5
\oplus TRUE POSITION	MACHINE SURFACES:
\odot CONCENTRICITY	INCH $\frac{1}{25}$ mm $\frac{3}{2}$
\equiv SYMMETRY	METRIC DIMS. SHOWN IN [BRACKETS]
	ASME Y14.5M 1994

DR BY:	I.LOPEZ	10-30-2012
APPD:	D.JAMORA	10-30-2012
THIRD ANGLE PROJECTION		EDS DATE 11-11-2011 FORMAT REV H
CONFIDENTIAL: THIS DRAWING AND ITS INFORMATION ARE THE EXCLUSIVE AND CONFIDENTIAL PROPERTY OF REGAL-BELOIT CORPORATION AND ARE NOT TO BE DISCLOSED, DUPLICATED, DISTRIBUTED OR OTHERWISE USED WITHOUT THE WRITTEN CONSENT OF REGAL-BELOIT CORPORATION. -ALL RIGHTS RESERVED.		

REGAL REGAL-BELOIT CORPORATION	
DESCRIPTION	
MODEL-IHP OUTLINE	
SIZE	DWG NO
C	E494M2
SCALE	SHEET
NONE	1

DR BY:	I.LOPEZ	10-30-2012
APPD:	D.JAMORA	10-30-2012
THIRD ANGLE PROJECTION		EDS DATE 11-11-2011 FORMAT REV H
CONFIDENTIAL: THIS DRAWING AND ITS INFORMATION ARE THE EXCLUSIVE AND CONFIDENTIAL PROPERTY OF REGAL-BELOIT CORPORATION AND ARE NOT TO BE DISCLOSED, DUPLICATED, DISTRIBUTED OR OTHERWISE USED WITHOUT THE WRITTEN CONSENT OF REGAL-BELOIT CORPORATION. -ALL RIGHTS RESERVED.		

REVISION:	ECO	REVISADO POR:	FECHA:	APROBADO POR:	FECHA:
A	0029141	I.LOPEZ	10-30-2012	H.SANCHEZ	10-30-2012



CARACTERISTICAS DE GEOMETRIA Y SIMBOLOS

- ▮ PLANICIDAD
- RECTITUD
- ∠ ANGULARIDAD
- ⊥ PERPENDICULARIDAD (A ESCUADRA)
- // PARALELISMO
- REDONDEZ (CIRCULARIDAD)
- ⊘ CILINDRICIDAD
- △ PERFIL DE CUALQUIER SUPERFICIE
- ∧ PERFIL DE CUALQUIER LINEA
- ∩ VARIACION
- ⊕ POSICION REAL
- ⊙ CONCENTRICIDAD
- = SIMETRIA

ASME Y14.5M 1994

A MENOS QUE SE ESPECIFIQUE DE OTRA MANERA, LAS TOLERANCIAS DE LAS DIMS; SON LAS SIGUIENTES:

	PULG	±.1	±.02	±.005	±.0005
	mm	±0.5	±0.13	±0.013	

ANG. ± 50 GRADOS
ELIMINAR REBABAS Y ORILLAS FILOSAS DEL BORDE.
PULG .003-.015 mm 0.1-0.4
FILETEAR ESQUINA: PULG .020 mm 0.5
MAQUINAR SUPERFICIES
PULG 125 mm 3.2

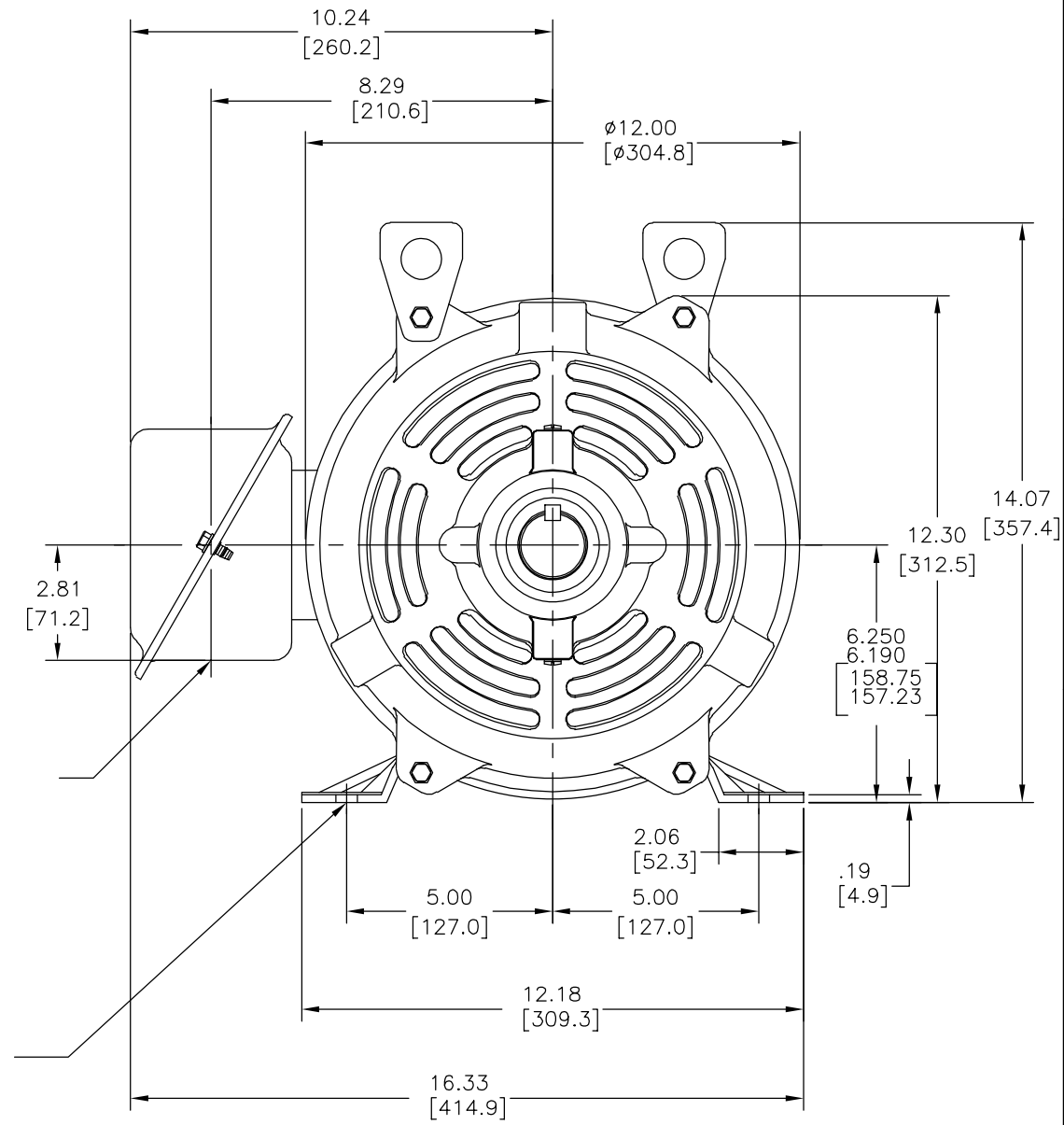
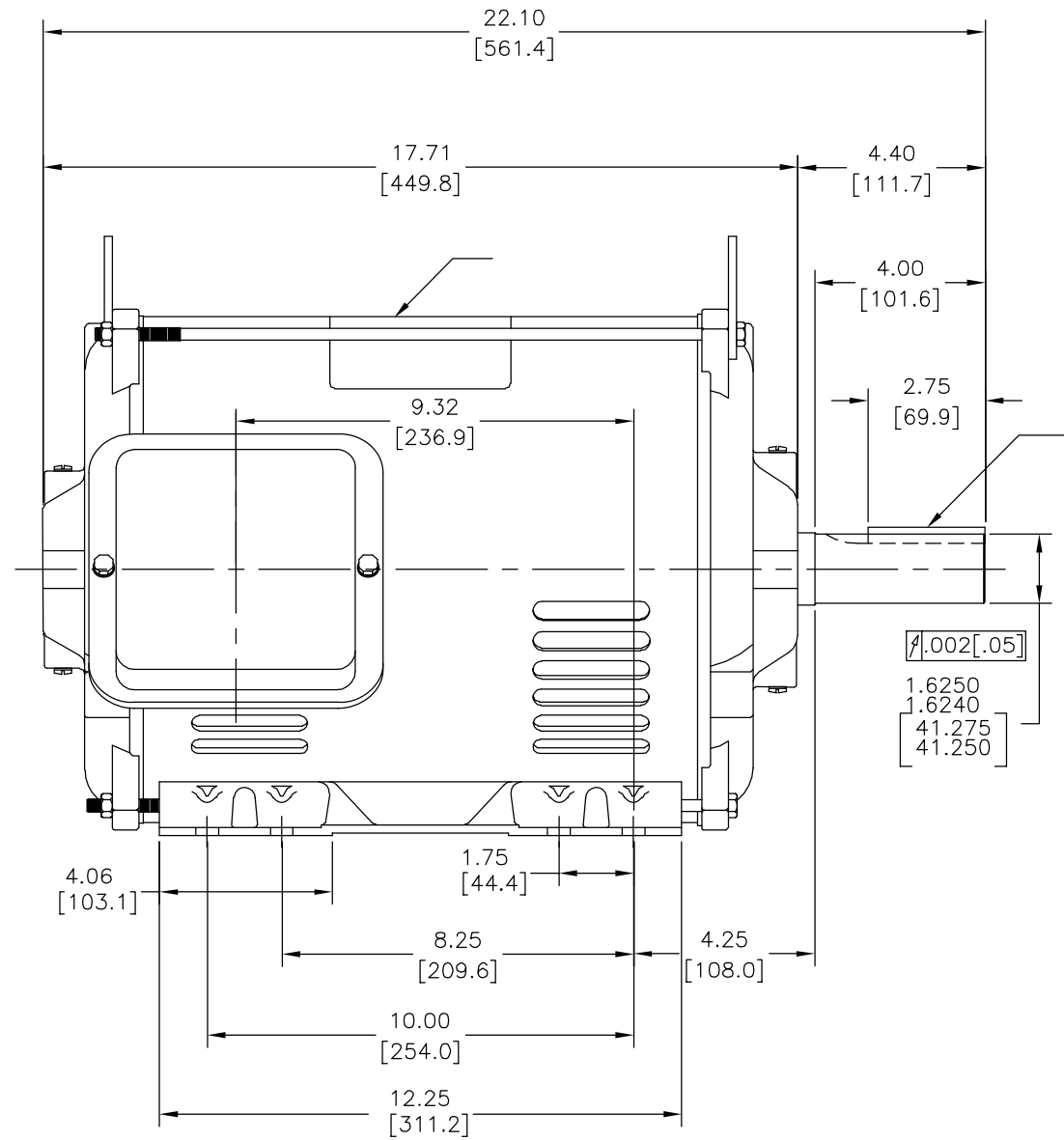
DIMS METRICAS MOSTRADAS [PARENTESIS]

DIBUJADO POR:	I.LOPEZ	10-30-2012
APROBADO POR:	D.JAMORA	10-30-2012
TERCER ANGULO DE PROYECCION	⊕	FECHA EDS: 11-11-2011 REV. FORMATO: H

CONFIDENCIAL: ESTE DIBUJO Y SU INFORMACION SON PROPIEDAD DE USO EXCLUSIVO Y CONFIDENCIAL DE REGAL-BELOIT CORPORATION. Y NO DEBERAN SER REVELADOS, DUPLICADOS, DISTRIBUIDOS O USARSE DE OTRA MANERA SIN EL CONSENTIMIENTO ESCRITO DE REGAL-BELOIT CORPORATION. -TODOS LOS DERECHOS RESERVADOS.

REGAL REGAL-BELOIT CORPORATION	
DESCRIPCION: MODEL-IHP OUTLINE	
TAMAÑO: C	NUMERO DE DIBUJO: E494M2
ESCALA: NONE	HOJA: 1

版本	ECO	编制	日期	批准	日期
A	0029141	I.LOPEZ	10-30-2012	H.SANCHEZ	10-30-2012



形位公差	除另有注明
□ 平面度	尺寸公差如下:
— 直线度	英寸 X XX XXX XXXX
∠ 倾斜度	英寸 ±.1 ±.02 ±.005 ±.0005
⊥ 垂直度	毫米 ±0.5 ±0.13 ±0.013
// 平行度	角度 ±.50 度
○ 圆度	清理毛刺和尖棱
⊙ 圆柱度	英寸 .003-.015 毫米 0.1-0.4
△ 面轮廓度	内圆角
∇ 线轮廓度	英寸 .020 毫米 0.5
⌒ 圆跳动	表面粗糙度
⊕ 位置度	英制 125 米制 3.2
⊙ 同轴度	米制尺寸显示在L

ASME Y14.5M 1994

绘图:	I.LOPEZ	10-30-2012
批准:	D.JAMORA	10-30-2012
第三角投影		图纸格式发布日期 11-11-2011 图纸格式版本 H
机密: 本图纸及相关信息所有权归REGAL-BELOIT CORPORATION. 未经REGAL-BELOIT CORPORATION书面授权, 不得泄露、复制、传播或作其他用途。—版权所有		

		REGAL-BELOIT CORPORATION	
名称 MODEL-IHP OUTLINE			
图幅 C	图号 E494M2		
比例 NONE			页号 1