

PRODUCT INFORMATION PACKET



Model No: E483M2A

Catalog No: E483M2A

15 HP, Close-Coupled Pump Motor, 3 phase, 1800 RPM, 230/460 V, J254P Frame, Drip Proof
Close-Coupled Pump Motors



Regal and Century are trademarks of Regal Rexnord Corporation or one of its affiliated companies.
©2021 Regal Rexnord Corporation, All Rights Reserved. MC017097E





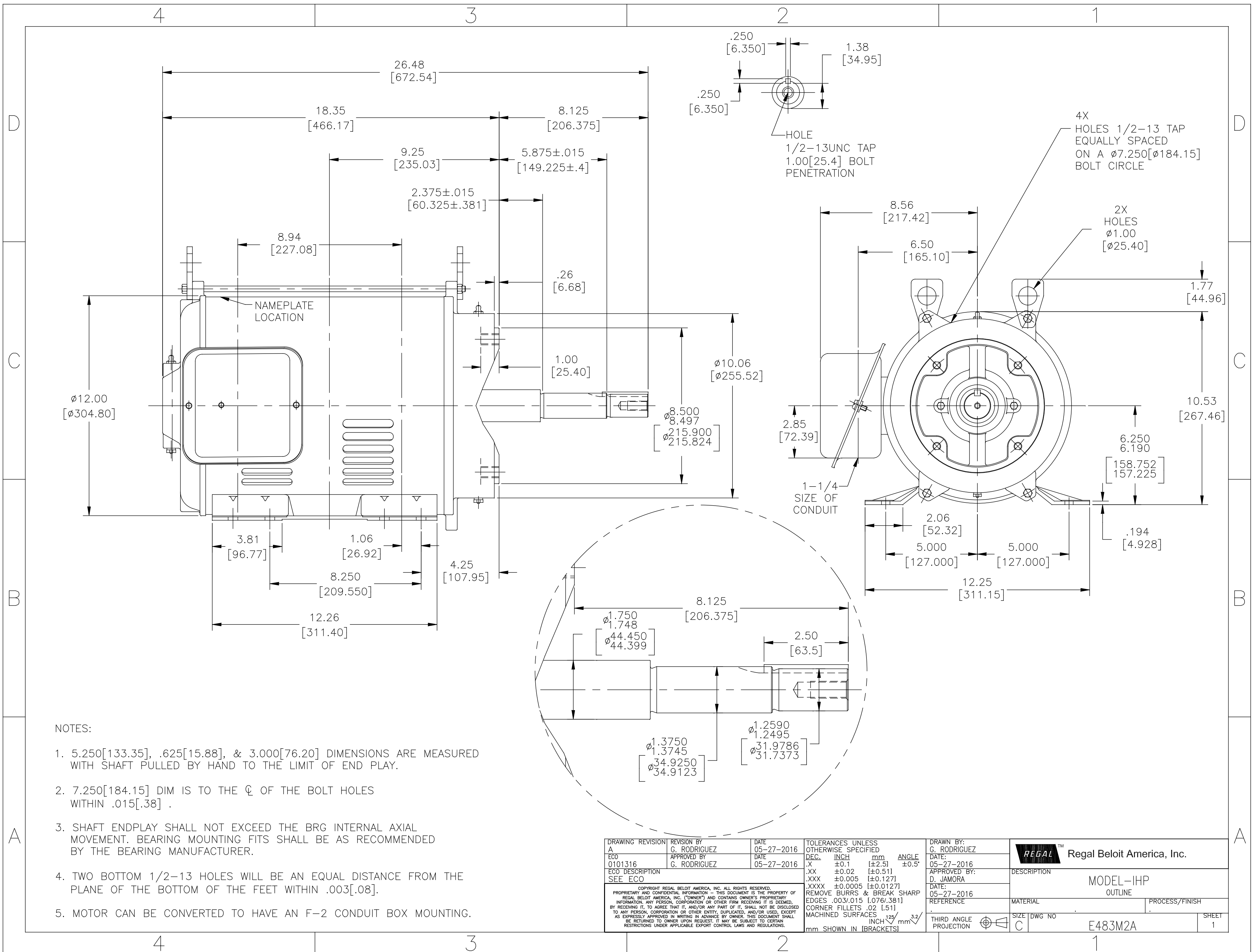
Nameplate Specifications

Output HP	15.0 Hp	Output KW	11.2 kW
Frequency	60 Hz	Voltage	230/460 V
Current	37.8/18.9 A	Speed	1770 rpm
Service Factor	1.15	Phase	3
Duty	Continuous	Insulation Class	F
Frame	J254P	Enclosure	Drip Proof
Thermal Protection	None	Ambient Temperature	40 °C
UL	Recognized	CSA	Y
Number of Speeds	1		

Technical Specifications

Electrical Type	Three Phase	Starting Method	Across The Line
Poles	4	Rotation	Counterclockwise
Mounting	Rigid Base	Drive End Bearing	Ball
Opp Drive End Bearing	Ball	Frame Material	Rolled Steel
Shaft Type	Keyed	Overall Length	26.48 in
Frame Length	13.00 in	Shaft Diameter	1.750 in
Shaft Extension	8.125 in		
Connection Drawing	80022801.PCX	Outline Drawing	E483M2A-S01

This is an uncontrolled document once printed or downloaded and is subject to change without notice. Date Created:10/12/2021



NOTES:

1. 5.250[133.35], .625[15.88], & 3.000[76.20] DIMENSIONS ARE MEASURED WITH SHAFT PULLED BY HAND TO THE LIMIT OF END PLAY.
2. 7.250[184.15] DIM IS TO THE C OF THE BOLT HOLES WITHIN .015[.38] .
3. SHAFT ENDPLAY SHALL NOT EXCEED THE BRG INTERNAL AXIAL MOVEMENT. BEARING MOUNTING FITS SHALL BE AS RECOMMENDED BY THE BEARING MANUFACTURER.
4. TWO BOTTOM 1/2-13 HOLES WILL BE AN EQUAL DISTANCE FROM THE PLANE OF THE BOTTOM OF THE FEET WITHIN .003[.08].
5. MOTOR CAN BE CONVERTED TO HAVE AN F-2 CONDUIT BOX MOUNTING.

DRAWING REVISION A	REVISION BY G. RODRIGUEZ	DATE 05-27-2016	TOLERANCES UNLESS OTHERWISE SPECIFIED DEC. INCH mm ANGLE .XX ±0.1 [±2.5] ±0.5° .XX ±0.02 [±0.51] .XXX ±0.005 [±0.127] .XXXX ±0.0005 [±0.0127]	DRAWN BY: G. RODRIGUEZ	Regal Beloit America, Inc.	
ECO DESCRIPTION SEE ECO	APPROVED BY G. RODRIGUEZ	DATE 05-27-2016	REMOVE BURRS & BREAK SHARP EDGES .003/.015 [0.076/.381] CORNER FILLETS .02 [51] MACHINED SURFACES 125/32	APPROVED BY: D. JAMORA		DESCRIPTION MODEL-IHP OUTLINE
COPYRIGHT REGAL BELOIT AMERICA, INC. ALL RIGHTS RESERVED. PROPRIETARY AND CONFIDENTIAL INFORMATION - THIS DOCUMENT IS THE PROPERTY OF REGAL BELOIT AMERICA, INC. (OWNERS) AND CONTAINS OWNERS PROPRIETARY INFORMATION. ANY PERSON, CORPORATION OR OTHER FIRM RECEIVING IT IS DEEMED, BY RECEIVING IT, TO AGREE THAT IT, AND/OR ANY PART OF IT, SHALL NOT BE DISCLOSED TO ANY PERSON, CORPORATION OR OTHER ENTITY, DUPLICATED, AND/OR USED, EXCEPT AS EXPRESSLY APPROVED IN WRITING IN ADVANCE BY OWNER. THIS DOCUMENT SHALL BE RETURNED TO OWNER UPON REQUEST. IT MAY BE SUBJECT TO CERTAIN RESTRICTIONS UNDER APPLICABLE EXPORT CONTROL LAWS AND REGULATIONS.			THIRD ANGLE PROJECTION	DATE: 05-27-2016	MATERIAL	PROCESS/FINISH
			mm SHOWN IN [BRACKETS]	REFERENCE	SIZE DWG NO C E483M2A	SHEET 1