

PRODUCT INFORMATION PACKET

Model No: E407M2

Catalog No: E407M2

General Purpose Motors, Open Drip Proof, 20 HP, 3 Ph, 60 Hz, 230/460 V, 1765 RPM, S256T



Regal and are trademarks of Regal Rexnord Corporation or one of its affiliated companies.

©2022 Regal Rexnord Corporation, All Rights Reserved. MC017097E

Nameplate Specifications

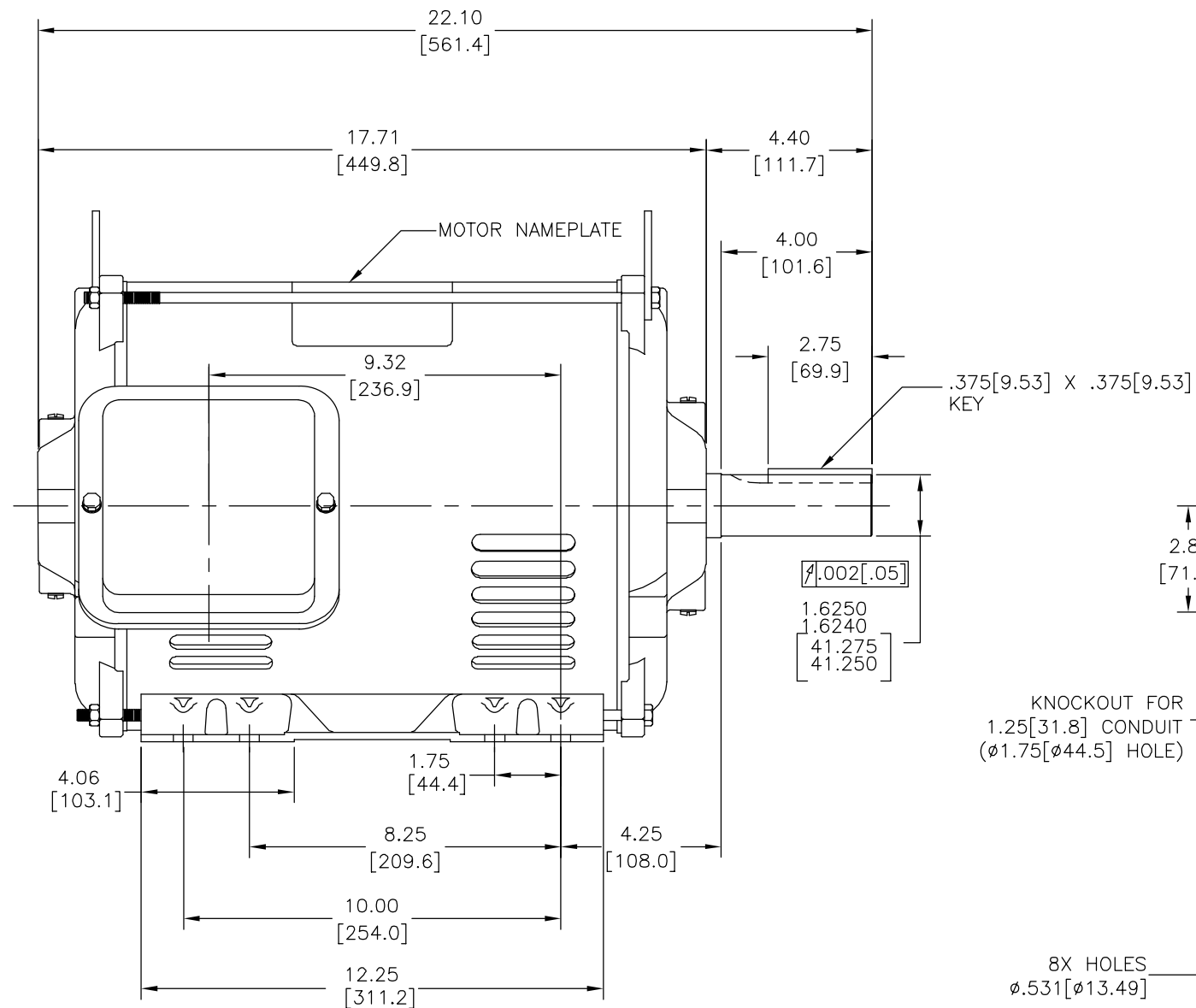
Output HP	20.0 Hp	Output KW	14.9 kW
Frequency	60 Hz	Voltage	230/460 V
Current	49/24.5 A	Speed	1765 rpm
Service Factor	1.15	Phase	3
Duty	Continuous	Insulation Class	F
Frame	S256T	Enclosure	Open Drip Proof
Thermal Protection	None	Ambient Temperature	40 °C
UL	Recognized	CSA	Y
CE	N	Number of Speeds	1

Technical Specifications

Electrical Type	POLYPHASE	Starting Method	Across The Line
Poles	4	Rotation	Counterclockwise
Mounting	Rigid Base	Drive End Bearing	Ball
Opp Drive End Bearing	Ball	Frame Material	Rolled Steel
Shaft Type	Keyed	Overall Length	22.10 in
Frame Length	13.00 in	Shaft Diameter	1.625 in
Shaft Extension	4.4 in		
Connection Drawing	80022802.PCX	Outline Drawing	E407M2-S01

This is an uncontrolled document once printed or downloaded and is subject to change without notice. Date Created:05/06/2022

REV	ECO	REV BY	DATE	APPD	DATE
A	ECO-0028876	I.LOPEZ	10-16-2012	H.SANCHEZ	10-16-2012

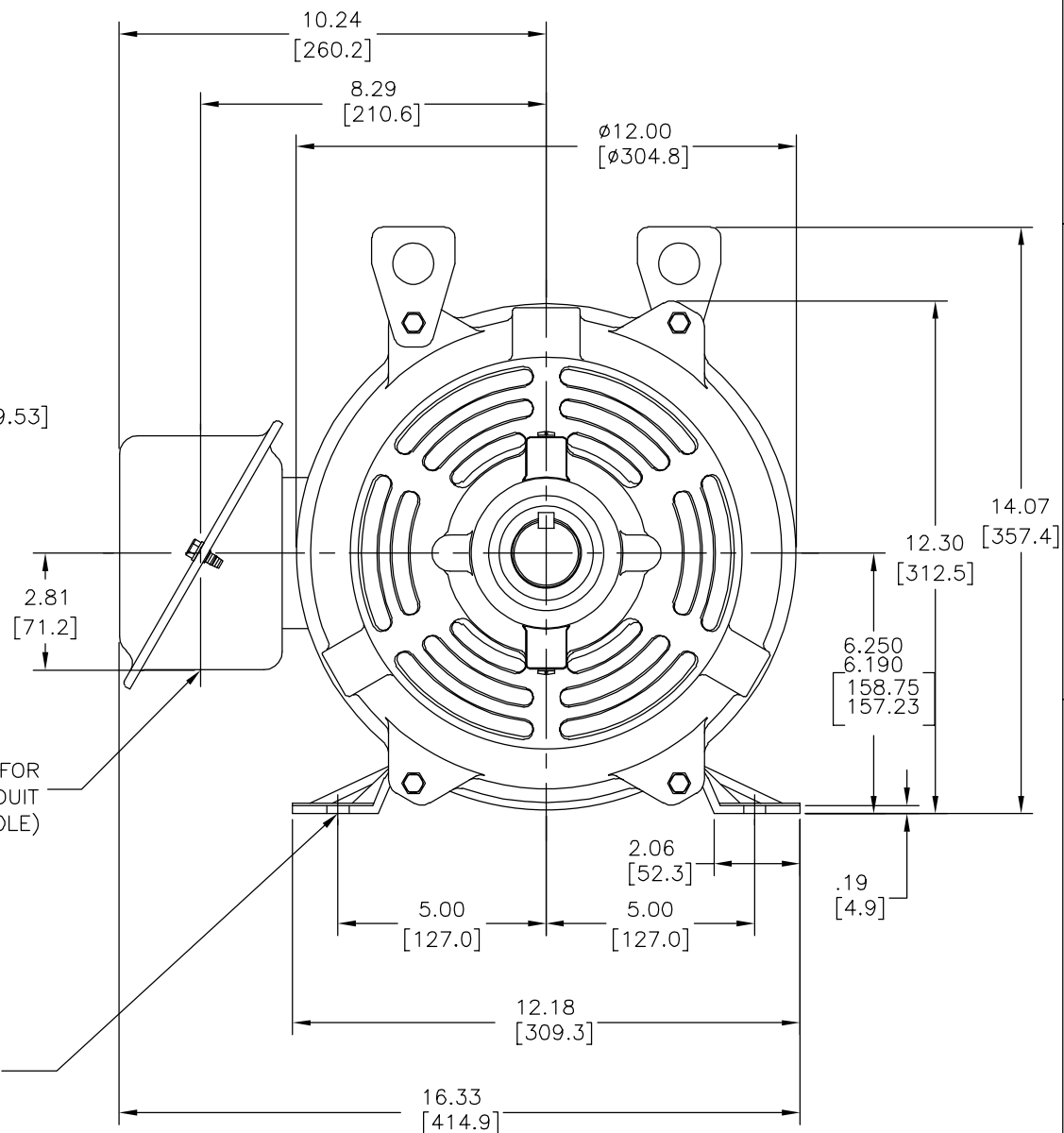


NOTES:

1. CONDUIT BOX MAY BE ROTATED IN 90° INCREMENTS.
2. MOTOR IS SUITABLE FOR FIELD CONVERSION FROM AN F1 TO AN F2 CONDUIT BOX LOCATION.
3. MOTOR VENTILATION: AIR INTAKE THROUGH OPENINGS IN THE FACE OF EACH BRACKET AND EXHAUSTED THROUGH THE VENT SLOTS ON EACH END OF THE SHELL.

KNOCKOUT FOR
1.25 [31.8] CONDUIT
(Ø1.75 [Ø44.5] HOLE)

8X HOLES
Ø.531 [Ø13.49]



MOTOR DESCRIPTION:

3 PHASE OPEN DRIPPROOF STEEL SHELL 254T OR 256T MOUNTING.
OTHER MOUNTING ORIENTATIONS ARE ACCEPTABLE; HOWEVER WHEN
MOUNTED OTHER THAN HORIZONTAL; MOTOR WILL NOT BE DRIPPROOF
AS DEFINED BY NEMA.

GEOMETRIC CHARACTERISTICS & SYMBOLS
□ FLATNESS
— STRAIGHTNESS
∠ ANGULARITY
⊥ PERPENDICULARITY (SQUARENESS)
// PARALLELISM
○ ROUNDNESS (CIRCULARITY)
⊘ CYLINDRICITY
△ PROFILE OF ANY SURFACE
⌒ PROFILE OF ANY LINE
⌀ RUNOUT
⊕ TRUE POSITION
◎ CONCENTRICITY
≡ SYMMETRY

ASME Y14.5M 1994

UNLESS OTHERWISE SPECIFIED
DIM. TOLERANCES ARE AS FOLLOWS:
INCH X XX XXX XXXX
mm ±0.1 ±0.02 ±0.005 ±0.0005
mm ±0.5 ±0.13 ±0.013
ANG. ±.50 DEG
REMOVE BURRS & BREAK SHARP EDGES:
INCH .003-.015 mm 0.1-0.4
CORNER FILLETS TO:
INCH .020 mm 0.5
MACHINE SURFACES:
INCH 125 mm 3.2
METRIC DIMS. SHOWN IN [BRACKETS]

DR BY:

I.LOPEZ

10-16-2012

APPD:

D.JAMORA

10-16-2012

THIRD ANGLE PROJECTION



EDS DATE 11-11-2011

FORMAT REV G

CONFIDENTIAL: THIS DRAWING AND ITS INFORMATION ARE
THE EXCLUSIVE AND CONFIDENTIAL PROPERTY OF REGAL-
BELOIT CORPORATION AND ARE NOT TO BE DISCLOSED,
DUPLICATED, DISTRIBUTED OR OTHERWISE USED WITHOUT
THE WRITTEN CONSENT OF REGAL-BELOIT CORPORATION.
-ALL RIGHTS RESERVED.



REGAL-BELOIT CORPORATION

DESCRIPTION

MODEL-IHP
OUTLINE

SIZE

C

DWG NO

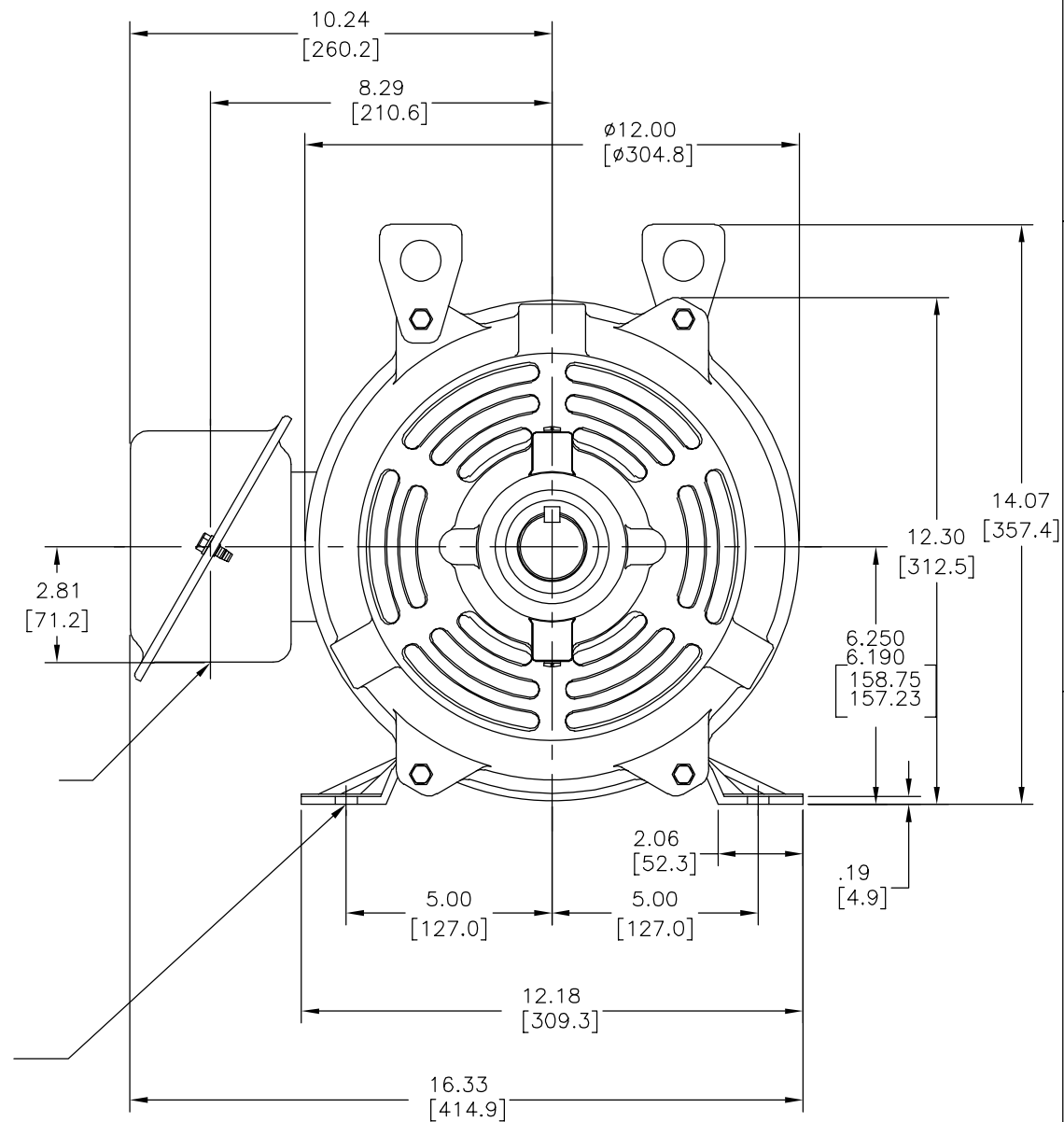
E407M2


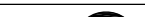
SCALE

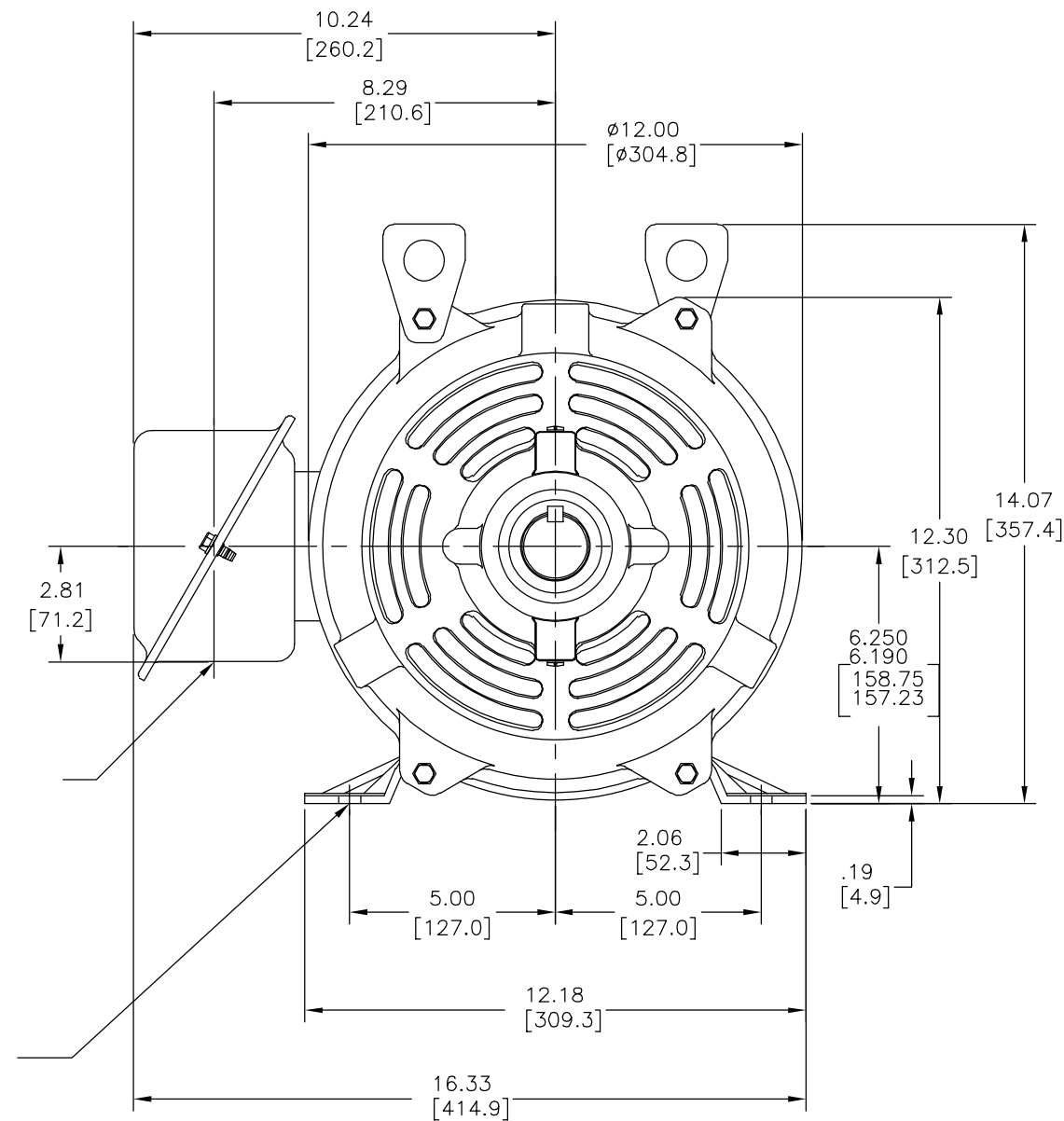
NONE

SHEET

1



CARACTERISTICAS DE GEOMETRIA Y SIMBOLOS ▽ PLANICIDAD ▽ RECTITUD ∠ ANGULARIDAD ⊥ PERPENDICULARIDAD (A ESCUADRA) // PARALELISMO ○ REDONDEZ (CIRCULARIDAD) ⊘ CILINDRICIDAD ∩ PERFIL DE CUALQUIER SUPERFICIE ∪ PERFIL DE CUALQUIER LINEA ↗ VARIACION ⊕ POSICION REAL ⊙ CONCENTRICIDAD ∩ SIMETRIA	A MENOS QUE SE ESPECIFIQUE DE OTRA MANERA, LAS TOLERANCIAS DE LAS DIMS: SON LAS SIGUIENTES: mm X XXX PULG ±.1 ±.02 ±.005 ±.0005 mm ±0.5 ±0.13 ±0.013 ANG. ±.50 GRADOS ELIMINAR REBABAS Y ORILLAS FILOSAS DEL BORDE. PULG .003-.015 mm 0.1-0.4 FILETEAR ESQUINA: PULG .020 mm 0.5 MAQUINAR SUPERFICIES PULG 125 mm 32	DIBUJADO POR: I. LOPEZ 10-16-2012 APROBADO POR: D. JAMORA 10-16-2012	TERCER ANGULO DE PROYECCION  FECHA EDS: 11-11-2011 REV. FORMATO: G	 REGAL-BELOIT CORPORATION
ASME Y14.5M 1994	DIMS METRICAS MOSTRADAS [PARENTESIS]	CONFIDENCIAL: ESTE DIBUJO Y SU INFORMACION SON PROPIEDAD DE USO EXCLUSIVO Y CONFIDENCIAL DE REGAL-BELOIT CORPORATION. Y NO DEBERAN SER REVELADOS, DUPLICADOS, DISTRIBUIDOS O USARSE DE OTRA MANERA SIN EL CONSENTIMIENTO ESCRITO DE REGAL-BELOIT CORPORATION. -TODOS LOS DERECHOS RESERVADOS.	DESCRIPCION: MODEL-IHP OUTLINE	TAMAÑO: C NUMERO DE DIBUJO: E407M2
			ESCALA: NONE	HOJA: 1



<div>形位公差</div> <div>□ 平面度</div> <div>▨ 直线度</div> <div>∠ 倾斜度</div> <div>⊥ 垂直度</div> <div>// 平行度</div> <div>○ 圆度</div> <div>⊙ 圆柱度</div> <div>⌒ 轮廓度</div> <div>⌒ 轮廓度</div> <div>⌒ 轮廓度</div> <div>⌒ 轮廓度</div> <div>⊕ 位置度</div> <div>⊕ 同轴度</div> <div>≡ 对称度</div>	<div>除另有注明</div> <div>尺寸公差如下:</div> <div>英寸 $\begin{matrix} X \\ \pm .1 \end{matrix}$ $\begin{matrix} XX \\ \pm .02 \end{matrix}$ $\begin{matrix} XXX \\ \pm .005 \end{matrix}$ $\begin{matrix} XXXX \\ \pm .0005 \end{matrix}$</div> <div>毫米 $\begin{matrix} \pm 0.5 \\ \pm 0.13 \end{matrix}$ $\begin{matrix} \pm 0.13 \\ \pm 0.13 \end{matrix}$</div> <div>角度 $\begin{matrix} \pm .50 \\ \pm .50 \end{matrix}$ 度</div> <div>清理毛刺和尖棱</div> <div>英寸 $\begin{matrix} .003-.015 \end{matrix}$ 毫米 0.1-0.4</div> <div>内圆角</div> <div>英寸 $\begin{matrix} .020 \end{matrix}$ 毫米 0.5</div> <div>表面粗糙度</div> <div>英制 $\begin{matrix} 125 \\ \checkmark \end{matrix}$ 米制 $\begin{matrix} 3.2 \\ \checkmark \end{matrix}$</div> <div>米制尺寸显示在 L J</div>	<div>绘图:</div> <div>I.LOPEZ</div> <div>10-16-2012</div>	<div> REGAL-BELOIT CORPORATION</div>	
		<div>批准:</div> <div>D.JAMORA</div> <div>10-16-2012</div>		<div>名称</div> <div>MODEL-IHP OUTLINE</div>
		<div>第三角投影</div> <div></div> <div>图纸格式发布日期 11-11-2011</div> <div>图纸格式版本 G</div>		<div>图幅</div> <div>C</div> <div>图号</div> <div>E407M2</div>
		<div>机密: 本图纸及相关信息所有权归REGAL-BELOIT CORPORATION.</div> <div>未经REGAL-BELOIT CORPORATION书面授权, 不得泄露、</div> <div>复制、传播或作其他用途。--版权所有</div>		<div>比例</div> <div>NONE</div> <div>页号</div> <div>1</div>