

PRODUCT INFORMATION PACKET



Model No: E397M2

Catalog No: E397M2

General Purpose Motor, 10.0 HP, 3 Ph, 60 Hz, 230/460 V, 1800 RPM, S215T Frame, DP



Regal and Century are trademarks of Regal Rexnord Corporation or one of its affiliated companies.

©2023 Regal Rexnord Corporation, All Rights Reserved. MC017097E





Nameplate Specifications

Output HP	10.0 Hp	Output KW	7.5 kW
Frequency	60 Hz	Voltage	230/460 V
Current	25.2/12.6 A	Speed	1755 rpm
Service Factor	1.15	Phase	3
Duty	Continuous	Insulation Class	F
Frame	S215T	Enclosure	Drip Proof
Thermal Protection	No Protection	Ambient Temperature	40 °C
UL	Recognized	CSA	Y
CE	N	Number of Speeds	1

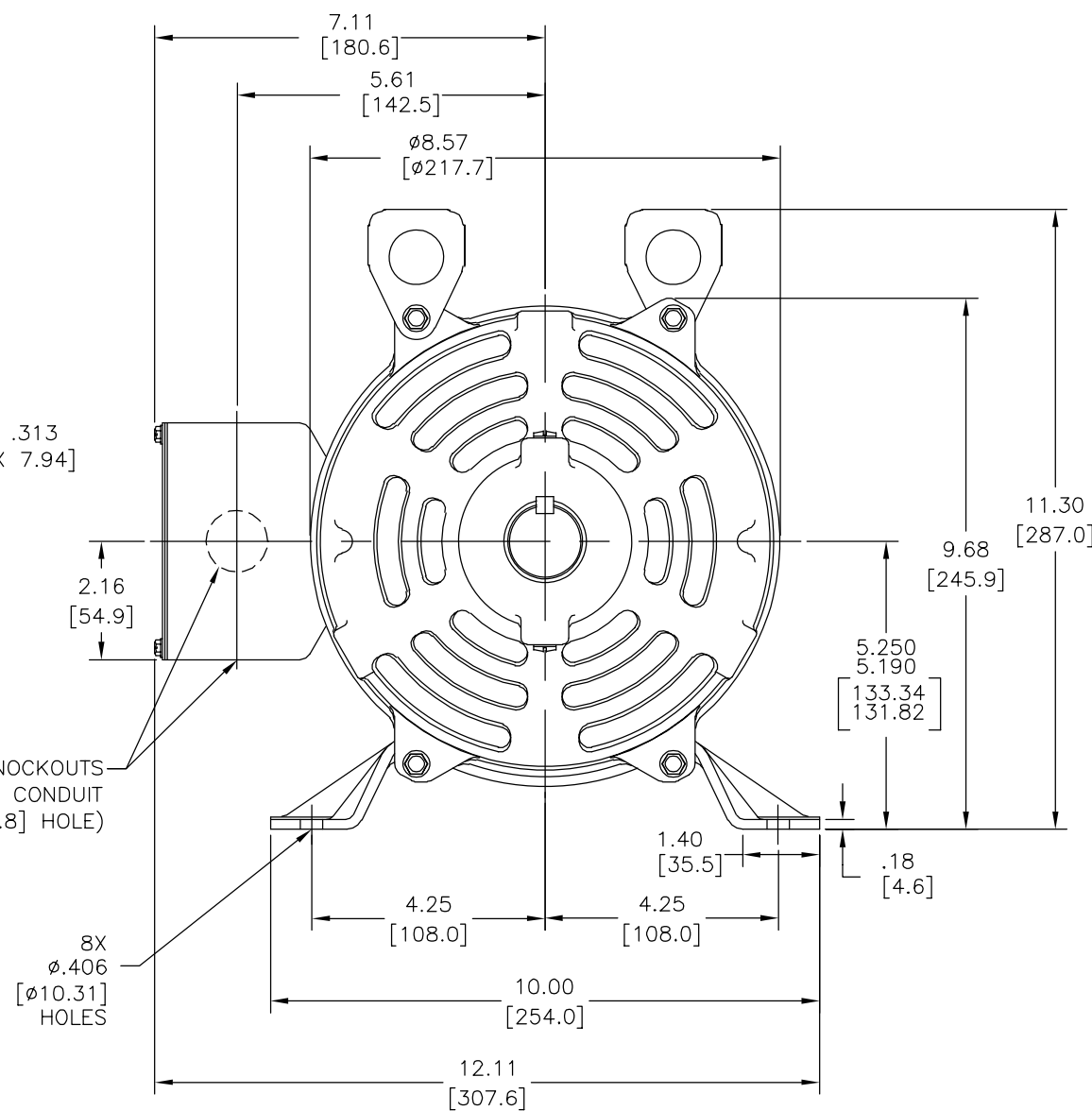
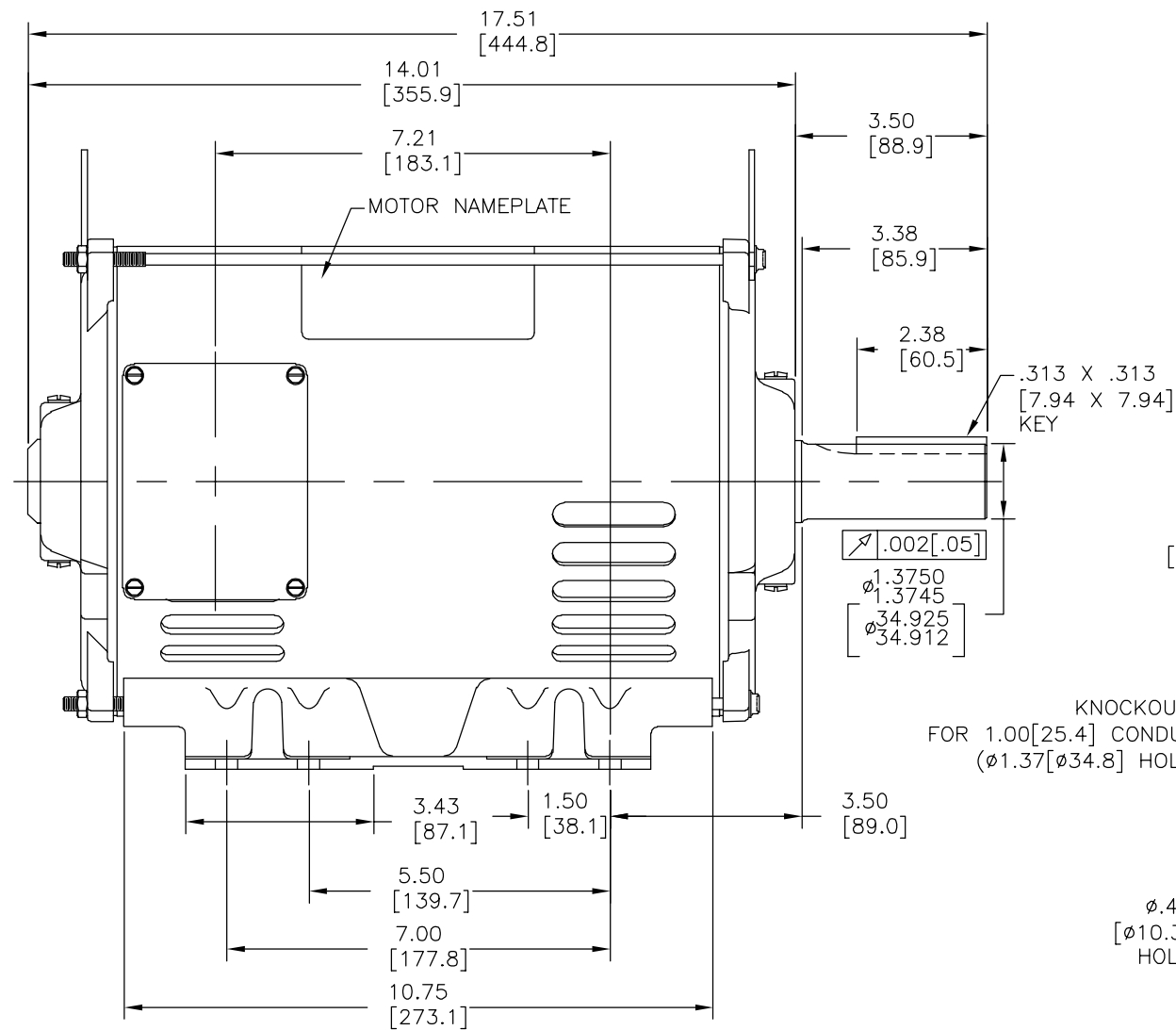
Technical Specifications

Electrical Type	Three Phase	Starting Method	Across The Line
Poles	4	Rotation	Counterclockwise
Mounting	Rigid Base	Drive End Bearing	Ball
Opp Drive End Bearing	Ball	Frame Material	Rolled Steel
Shaft Type	Keyed	Overall Length	17.51 in
Frame Length	11.00 in	Shaft Diameter	1.375 in
Shaft Extension	3.5 in		
Outline Drawing	E397M2-S01	Connection Drawing	80022802.PCX

This is an uncontrolled document once printed or downloaded and is subject to change without notice. Date Created:01/25/2023



MOTOR DESCRIPTION:
3 PHASE OPEN DRIPPROOF STEEL SHELL 213T OR 215T MOUNTING.
OTHER MOUNTING ORIENTATIONS ARE ACCEPTABLE; HOWEVER WHEN
MOUNTED OTHER THAN HORIZONTAL; MOTOR WILL NOT BE DRIPPROOF
AS DEFINED BY NEMA.

REV	ECO	REV BY	DATE	APPD	DATE
A	0026190	D.MUÑOZ	08-16-2012	H.SANCHEZ	08-16-2012



NOTES:

1. CONDUIT KNOCKOUTS ARE PROVIDED IN TERMINAL BOX TO ALLOW CONDUIT TO BE ATTACHED AT 6:00 O'CLOCK AND 3:00 O'CLOCK POSITION WITHOUT ROTATING THE BOX. TO PROVIDE ACCESS AT 12:00 O'CLOCK AND 9:00 O'CLOCK THE BOX MUST BE REMOVED, ROTATED 180°, AND REATTACHED.
2. MOTOR CAN BE CONVERTED FROM AN F1 TO AN F2 ASSEMBLY.
3. MOTOR VENTILATION: AIR INTAKE THROUGH OPENINGS IN THE FACE OF EACH BRACKET AND THEN EXHAUSTED THROUGH THE SLOTS ON EACH END OF THE SHELL.

GEOMETRIC CHARACTERISTICS & SYMBOLS □ FLATNESS — STRAIGHTNESS ∠ ANGULARITY ⊥ PERPENDICULARITY (SQUARENESS) // PARALLELISM ○ ROUNDNESS (CIRCULARITY) ⊘ CYLINDRICITY △ PROFILE OF ANY SURFACE ∧ PROFILE OF ANY LINE ↗ RUNOUT ⊕ TRUE POSITION ◎ CONCENTRICITY ≡ SYMMETRY ASME Y14.5M 1994	UNLESS OTHERWISE SPECIFIED DIM. TOLERANCES ARE AS FOLLOWS: INCH X XX XXX XXXX mm ±.1 ±.02 ±.005 ±.0005 mm ±0.5 ±0.13 ±0.013 ANG. ±.50 DEG REMOVE BURRS & BREAK SHARP EDGES: INCH .003-.015 mm 0.1-0.4 CORNER FILLETS TO: INCH .020 mm 0.5 MACHINE SURFACES: INCH 125 mm 3.2 METRIC DIMS. SHOWN IN [BRACKETS]	DR BY: D.MUÑOZ	08-16-2012	<div> REGAL-BELOIT CORPORATION</div> <div>DESCRIPTION</div> <div>MODEL-IHP OUTLINE</div> <div>SHEET 1</div>
		APPD: D.JAMORA	08-16-2012	
		THIRD ANGLE PROJECTION 	EDS DATE 11-11-2011 FORMAT REV H	
		CONFIDENTIAL: THIS DRAWING AND ITS INFORMATION ARE THE EXCLUSIVE AND CONFIDENTIAL PROPERTY OF REGAL-BELOIT CORPORATION AND ARE NOT TO BE DISCLOSED, DUPLICATED, DISTRIBUTED OR OTHERWISE USED WITHOUT THE WRITTEN CONSENT OF REGAL-BELOIT CORPORATION. -ALL RIGHTS RESERVED.		

4

3

2

1

DESCRIPCION DEL MOTOR:
3 FASES MONTAJE DE CARCAZA DE ACERO ABIERTA 213T O 215T
OTRAS OPERACIONES DE MONTAJE SON ACEPTABLES; SIN EMBARGO
CUANDO SEA MONTADA DIFERENTE A LA FORMA HORIZONTAL; EL MOTOR
NO SERA ABIERTO COMO ESTA DEFINIDO POR NEMA.

REVISION:	ECO	REVISADO POR:	FECHA:	APROBADO POR:	FECHA:
A	0026190	D.MUÑOZ	08-16-2012	H.SANCHEZ	08-16-2012

D

D

C

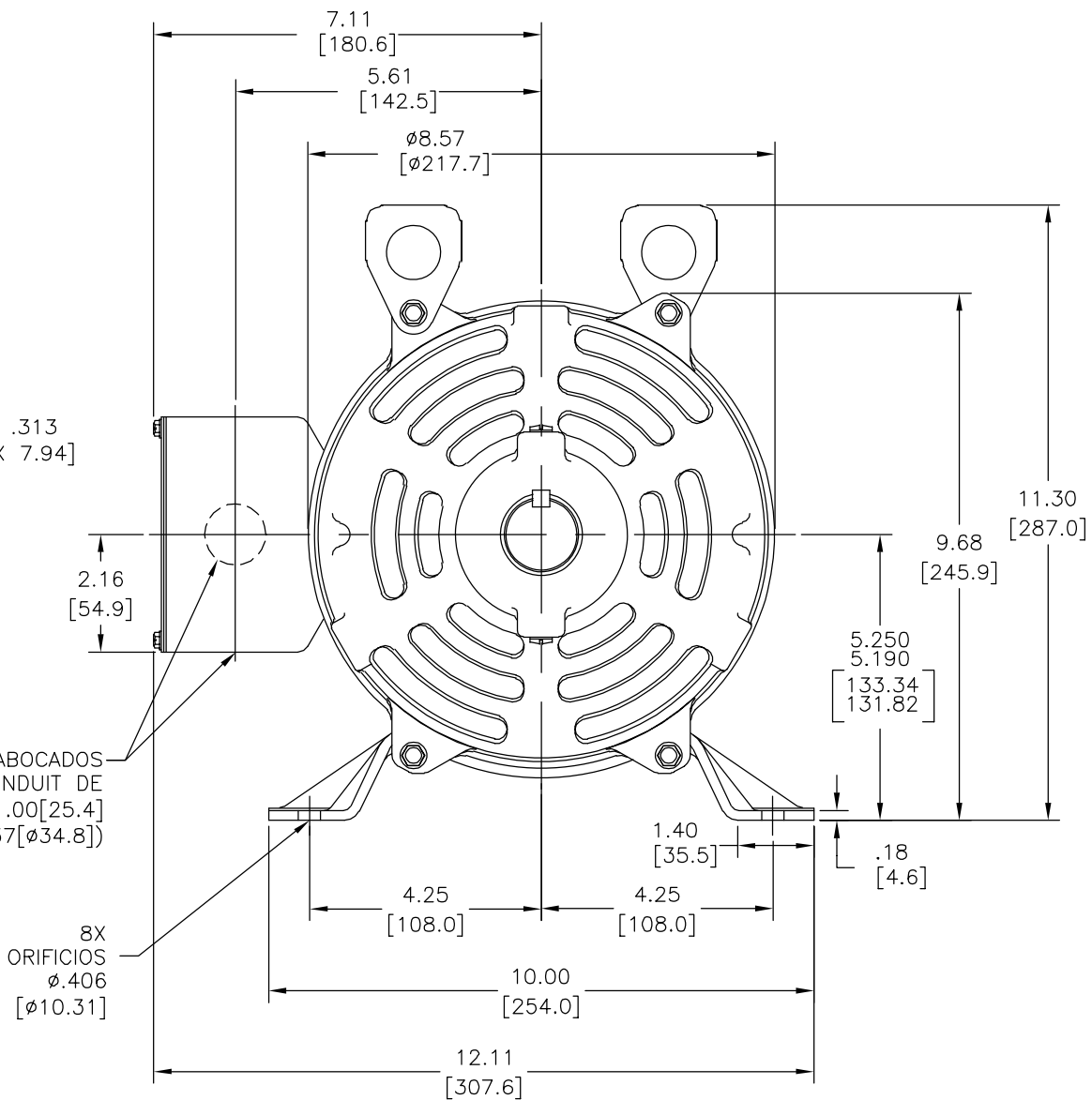
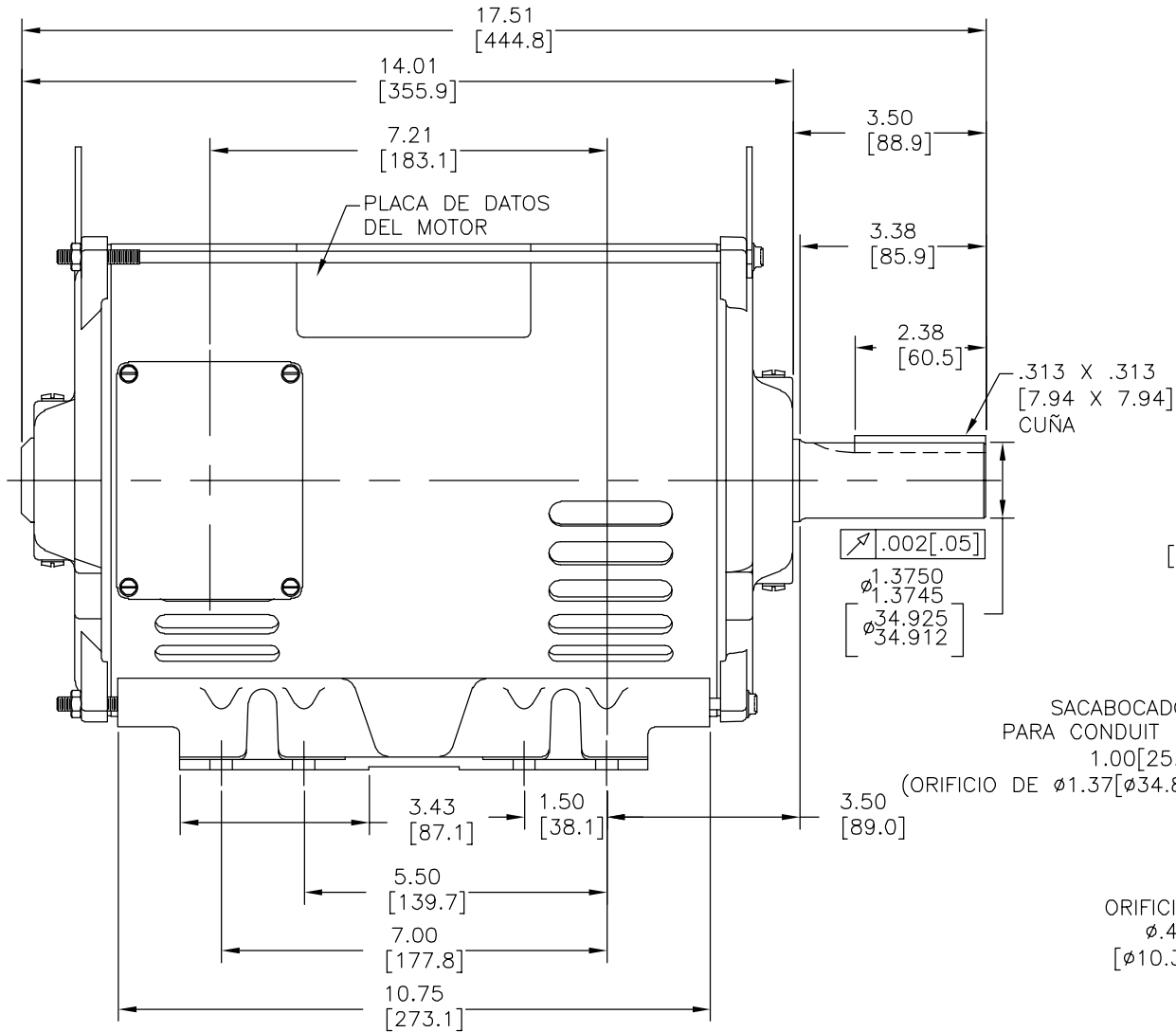
C

B

B

A

A



NOTAS:

1. LOS SACABOCADOS ESTAN COLOCADOS EN LA CAJA DE TERMINALES PARA PERMITIR AL CONDUIT SER AGREGADO EN LA POSICION DE LAS 6:00 Y 3:00 SIN ROTAR LA CAJA. PARA PERMITIR EL ACCESO A LAS 12:00 Y 9:00 LA CAJA DEBE SER REMOVIDA Y GIRARLA 180° Y VUELATA A COLOCAR.
2. EL MOTOR PUEDE CONVERTIRSE DE UN ENSAMBLE F1 A UN F2.
3. VENTILACION DEL MOTOR: EL AIRE ENTRA ATRAVEZ DE LAS ABERTURAS EN LA CARA DE CADA TAPA Y ES EXPULSADO POR LAS RANURAS DE CADA LADO DE LA CARCAZA.

CARACTERISTICAS DE GEOMETRIA Y SIMBOLOS
□ PLANICIDAD
— RECTITUD
∠ ANGULARIDAD
⊥ PERPENDICULARIDAD (A ESCUADRA)
// PARALELISMO
○ REDONDEZ (CIRCULARIDAD)
⊘ CILINDRICIDAD
△ PERFIL DE CUALQUIER SUPERFICIE
∧ PERFIL DE CUALQUIER LINEA
↗ VARIACION
⊕ POSICION REAL
⊙ CONCENTRICIDAD
≡ SIMETRIA

A MENOS QUE SE ESPECIFIQUE DE OTRA MANERA, LAS TOLERANCIAS DE LAS DIMS; SON LAS SIGUIENTES:
PULG ±.1 ±.02 ±.005 ±.0005
mm ±0.5 ±0.13 ±0.013
ANG. ±.50 GRADOS
ELIMINAR REBABAS Y ORILLAS FILOSAS DEL BORDE.
PULG .003-.015 mm 0.1-0.4
FILETEAR ESQUINA: PULG .020 mm 0.5
MAQUINAR SUPERFICIES
PULG 125 mm 3.2
DIMS METRICAS MOSTRADAS [PARENTESIS]

DIBUJADO POR:	D.MUNOZ	08-16-2012
APROBADO POR:	D.JAMORA	08-16-2012
TERCER ANGULO DE PROYECCION	⊕	FECHA EDS: 11-11-2011
		REV. FORMATO: H
CONFIDENCIAL: ESTE DIBUJO Y SU INFORMACION SON PROPIEDAD DE USO EXCLUSIVO Y CONFIDENCIAL DE REGAL-BELOIT CORPORATION. Y NO DEBERAN SER REVELADOS, DUPLICADOS, DISTRIBUIDOS O USARSE DE OTRA MANERA SIN EL CONSENTIMIENTO ESCRITO DE REGAL-BELOIT CORPORATION. -TODOS LOS DERECHOS RESERVADOS.		

REGAL REGAL-BELOIT CORPORATION	
DESCRIPCION:	
MODEL-IHP OUTLINE	
TAMAÑO: C	NUMERO DE DIBUJO: E397M2
ESCALA: NONE	HOJA: 1

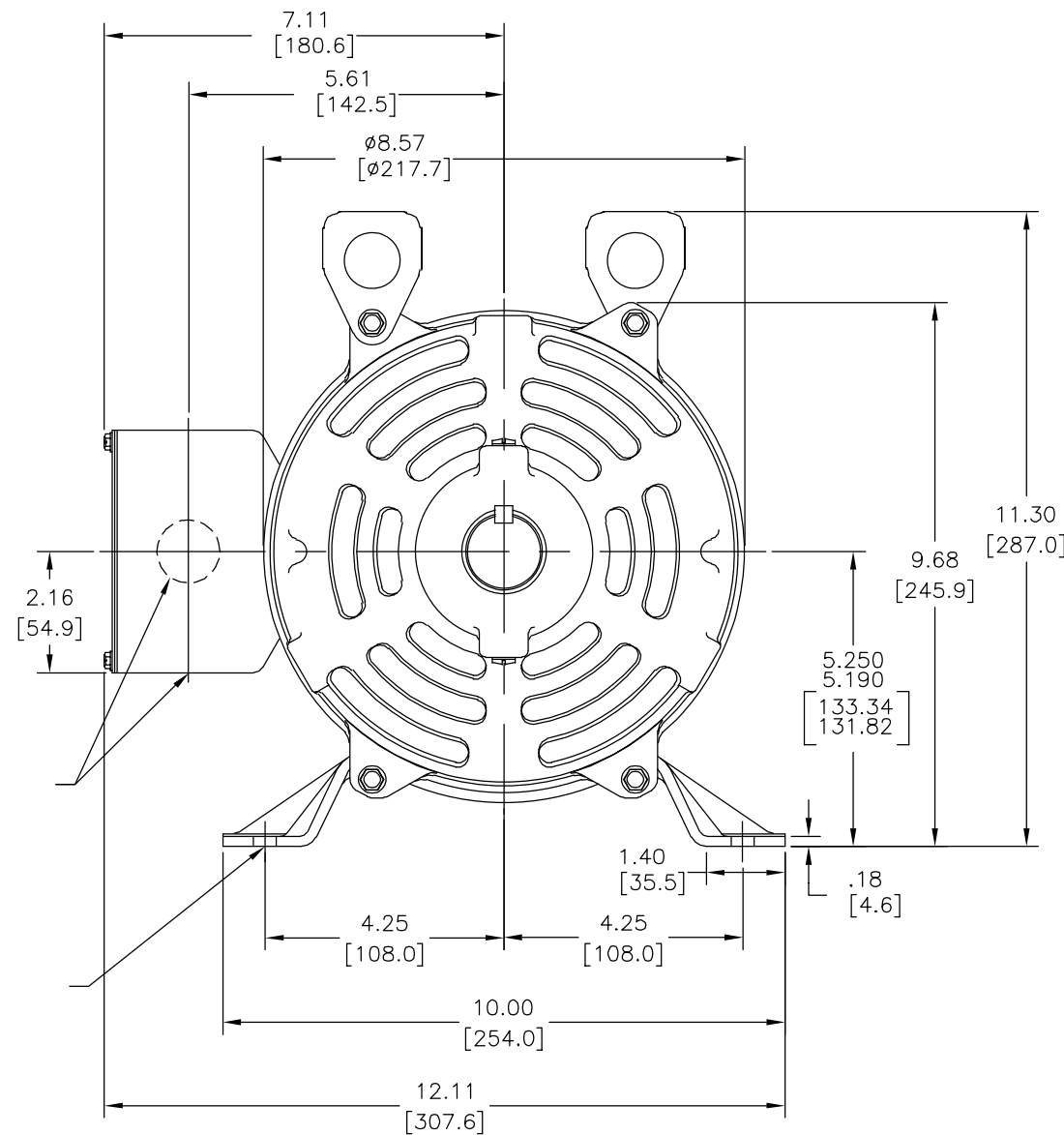
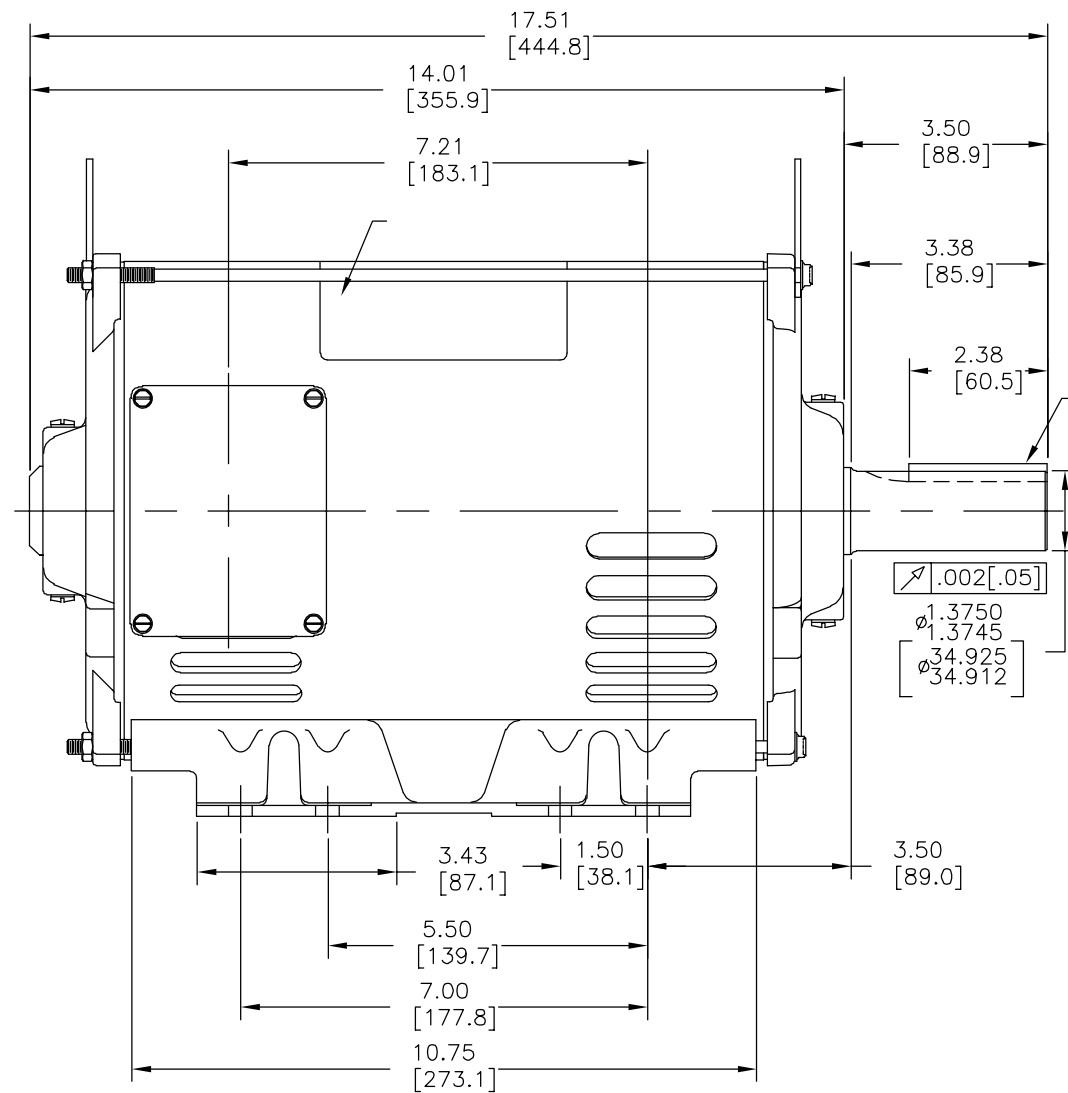
4

3

2

1

版本	ECO	编制	日期	批准	日期
A	0026190	D.MUÑOZ	08-16-2012	H.SANCHEZ	08-16-2012



形位公差
□ 平面度
— 直线度
∠ 倾斜度
⊥ 垂直度
// 平行度
○ 圆度
⊙ 圆柱度
△ 面轮廓度
⌒ 线轮廓度
↗ 圆跳动
⊕ 位置度
⊗ 同轴度
≡ 对称度

ASME Y14.5M 1994

除另有注明
尺寸公差如下:

英寸 X XX XXX XXXX
毫米 ±.1 ±.02 ±.005 ±.0005
毫米 ±0.5 ±0.13 ±0.013
角度 ±.50 度
清理毛刺和尖棱
英寸 .003-.015 毫米 0.1-0.4
内圆角
英寸 .020 毫米 0.5
表面粗糙度
英制 125 米制 3.2

米制尺寸显示在 []

绘图:

D.MUÑOZ

08-16-2012

批准:

D.JAMORA

08-16-2012

第三角投影



图纸格式发布日期 11-11-2011

图纸格式版本 H

机密: 本图纸及相关信息所有权归REGAL-BELOIT CORPORATION。
未经REGAL-BELOIT CORPORATION书面授权, 不得泄露、
复制、传播或作其他用途。—版权所有



REGAL-BELOIT CORPORATION

名称

MODEL-IHP
OUTLINE

图幅

C

图号

E397M2

比例

NONE

页号

1

Data Sheet

Date: 1/5/2023
 Customer: _____
 Attention: _____
 Submitted By: _____



Model No.: E397M2

Winding: BFR4T01

Submittal

Data @ 460 V

Motor Load Data

Load	0%	25%	50%	75%	100%	115%	
Current (Amps)	5.5	6.3	8.1	10.4	12.6	14.8	
Efficiency (%)	0.0	86.3	90.5	91.1	91.7	90.0	
P.F. (%)		43.6	64.0	74.3	81.0	81.1	

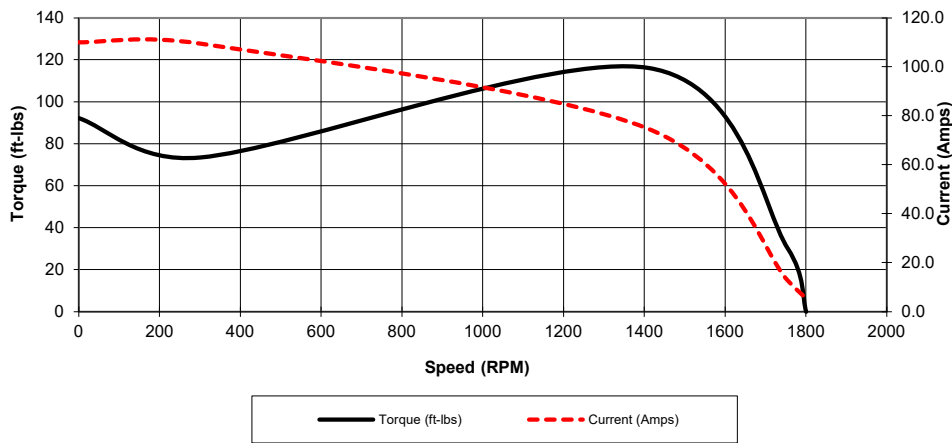
Motor Speed Data

	Locked Rotor	Pull-Up	Breakdown	Rated Load	Idle
Speed (RPM)	0	300	1409	1755	1800
Current (Amps)	110.0	109.5	74.7	12.6	5.5
Torque (ft-lbs)	92.3	73.4	116.2	30	0

Information Block

HP	10	
Sync. RPM	1800	
Frame	S215T	
Enclosure	ODP	
Motor Type	MOGB	
Voltage	230/460	V
Frequency	60	Hz
Design	A	
LR Code letter	K	
Service Factor	1.15	
Temp Rise @ FL	40.9	° C
Ambient	40	° C
Rotor/Shaft wk²	-	Lb-Ft²
Insulation Class	B	
VFD Rating	NA	
Sound Pressure @ 1M	-	dBA
Outline Dwg	E397M2	
Conn. Diag	80022802	

Motor Speed Data



Motor Load Data

