

PRODUCT INFORMATION PACKET

Model No: E393M2A

Catalog No: E393M2A

General Purpose Motors, Open Drip Proof, 15 HP, 3 Ph, 60 Hz, 208-230/460 V, 3525 RPM, 215T



Regal and are trademarks of Regal Rexnord Corporation or one of its affiliated companies.
©2022 Regal Rexnord Corporation, All Rights Reserved. MC017097E

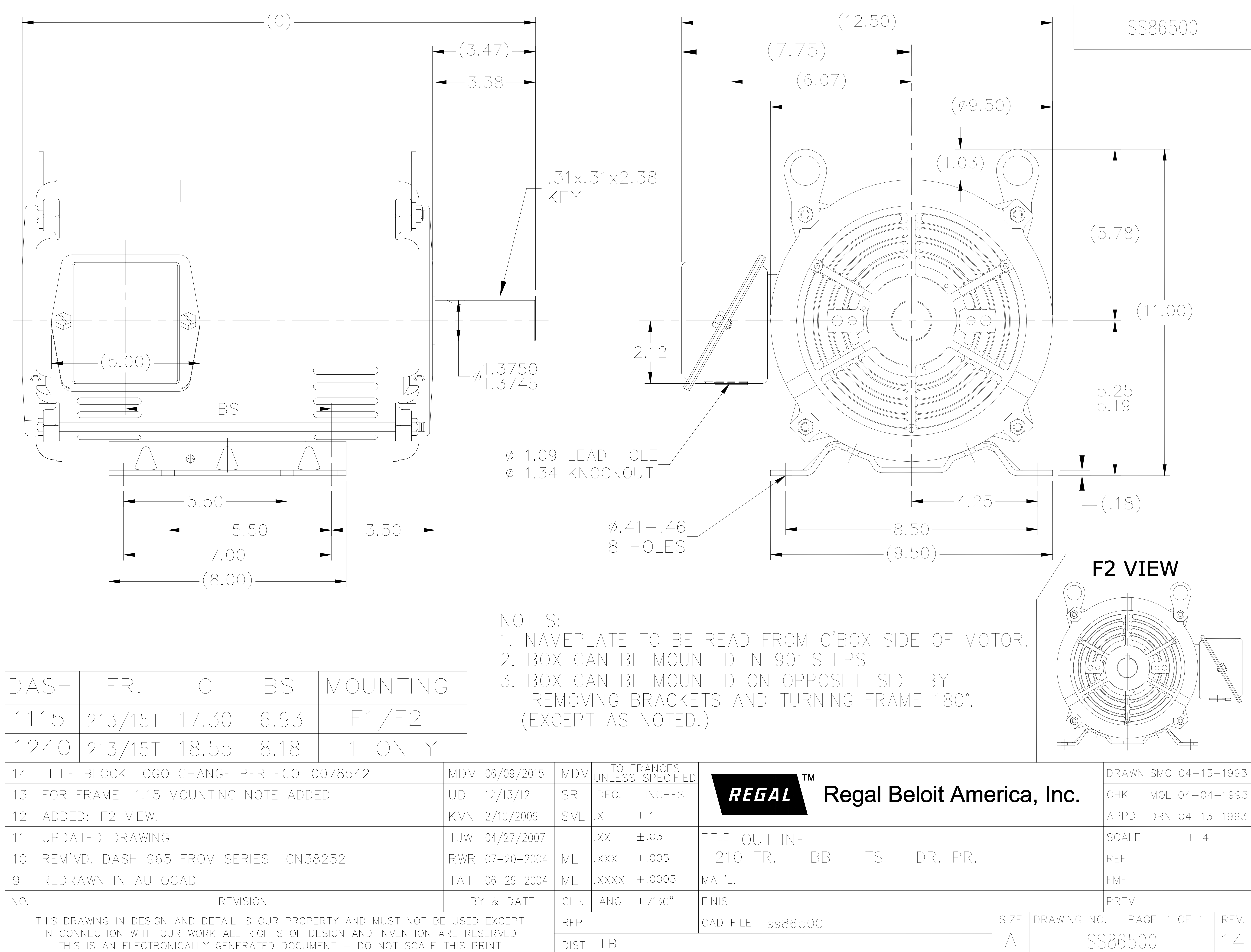
Nameplate Specifications

Output HP	15 Hp	Output KW	11.2 kW
Frequency	60 Hz	Voltage	208-230/460 V
Current	35/17.5 A	Speed	3525 rpm
Service Factor	1.25	Phase	3
Duty	Continuous	Insulation Class	F
Frame	215T	Enclosure	Open Drip Proof
Thermal Protection	No	Ambient Temperature	40 °C
UL	Recognized	CSA	Y
CE	Y	Number of Speeds	1

Technical Specifications

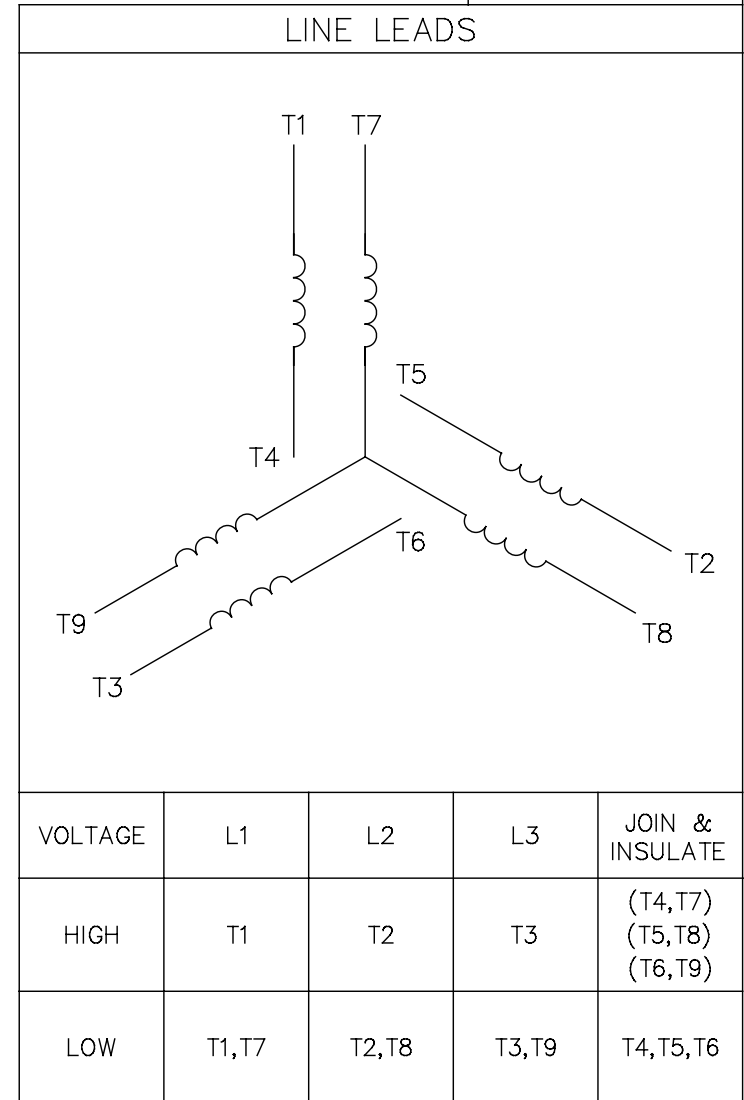
Electrical Type	Polyphase	Starting Method	Across The Line
Poles	2	Rotation	Reversible
Mounting	Rigid Base	Drive End Bearing	Ball
Opp Drive End Bearing	Ball	Frame Material	Rolled Steel
Shaft Type	T	Overall Length	17.30 in
Frame Length	11.15 in	Shaft Diameter	1.375 in
Shaft Extension	3.47 in		
Connection Drawing	005010.01	Outline Drawing	ss86500


This is an uncontrolled document once printed or downloaded and is subject to change without notice. Date Created:05/06/2022



005010-01

VIEW FROM OUTSIDE OF MOTOR AT SWITCH END.



				TOLERANCES UNLESS SPECIFIED		<div></div> Regal Beloit America, Inc.			DRAWN RDW 04/12/02			
				DEC.	INCHES				CHK			
				.X	±.1				APPD			
				.XX	±.01				SCALE 1=1			
				.XXX	±.005	TITLE EXTERNAL WIRING DIAGRAM 3 PHASE W/O PROTECTOR			REF FIG.2-51			
A	UPDATED TO REGAL LOGO		SAJ 06/26/15	AJY	.XXXX	±.0005	MAT'L. DECAL - 004014			FMF		
NO.	REVISION		BY & DATE	CHK	ANG	±1/2"	FINISH			PREV		
THIS DRAWING IN DESIGN AND DETAIL IS OUR PROPERTY AND MUST NOT BE USED EXCEPT IN CONNECTION WITH OUR WORK ALL RIGHTS OF DESIGN AND INVENTION ARE RESERVED THIS IS AN ELECTRONICALLY GENERATED DOCUMENT - DO NOT SCALE THIS PRINT				RFP 04/12/02		CAD FILE 00501001		SIZE A	DRAWING NO. 005010-01		REV. A	
				DIST BRF-NLV								