

PRODUCT INFORMATION PACKET



Model No: E377M2

Catalog No: E377M2

15 HP Close-Coupled Pump Motor, 3 phase, 3600 RPM, 230/460 V, 215JM Frame, ODP
Close-Coupled Pump Motors



Regal and Century are trademarks of Regal Rexnord Corporation or one of its affiliated companies.
©2021 Regal Rexnord Corporation, All Rights Reserved. MC017097E





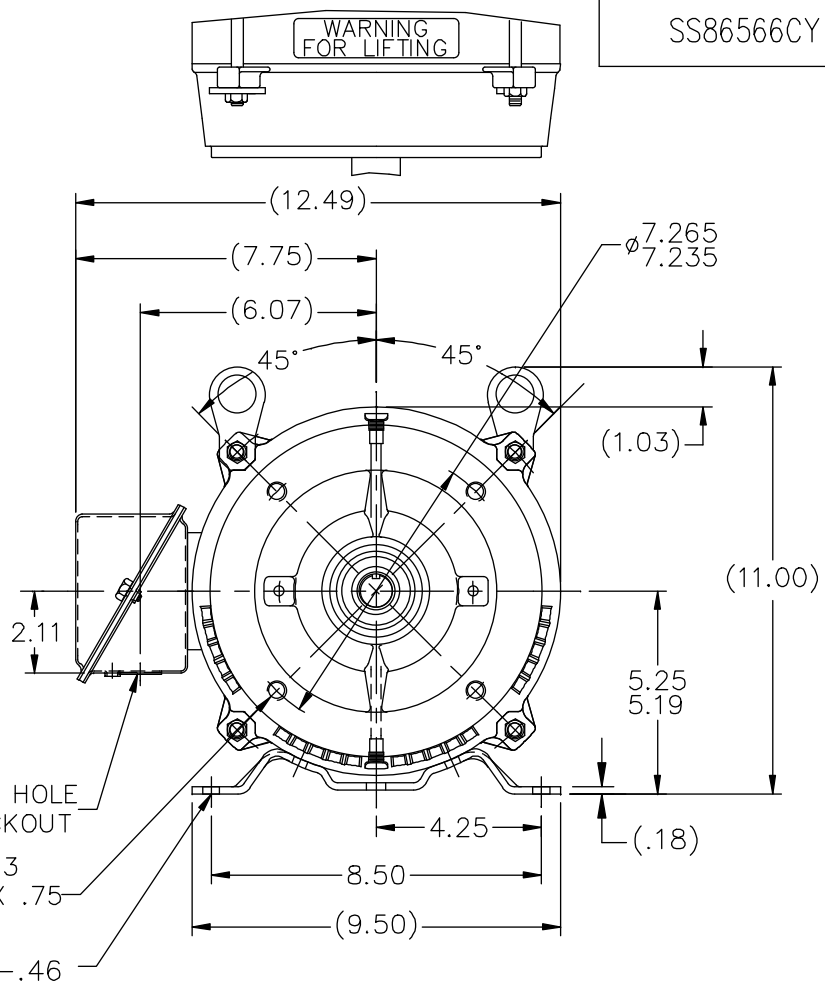
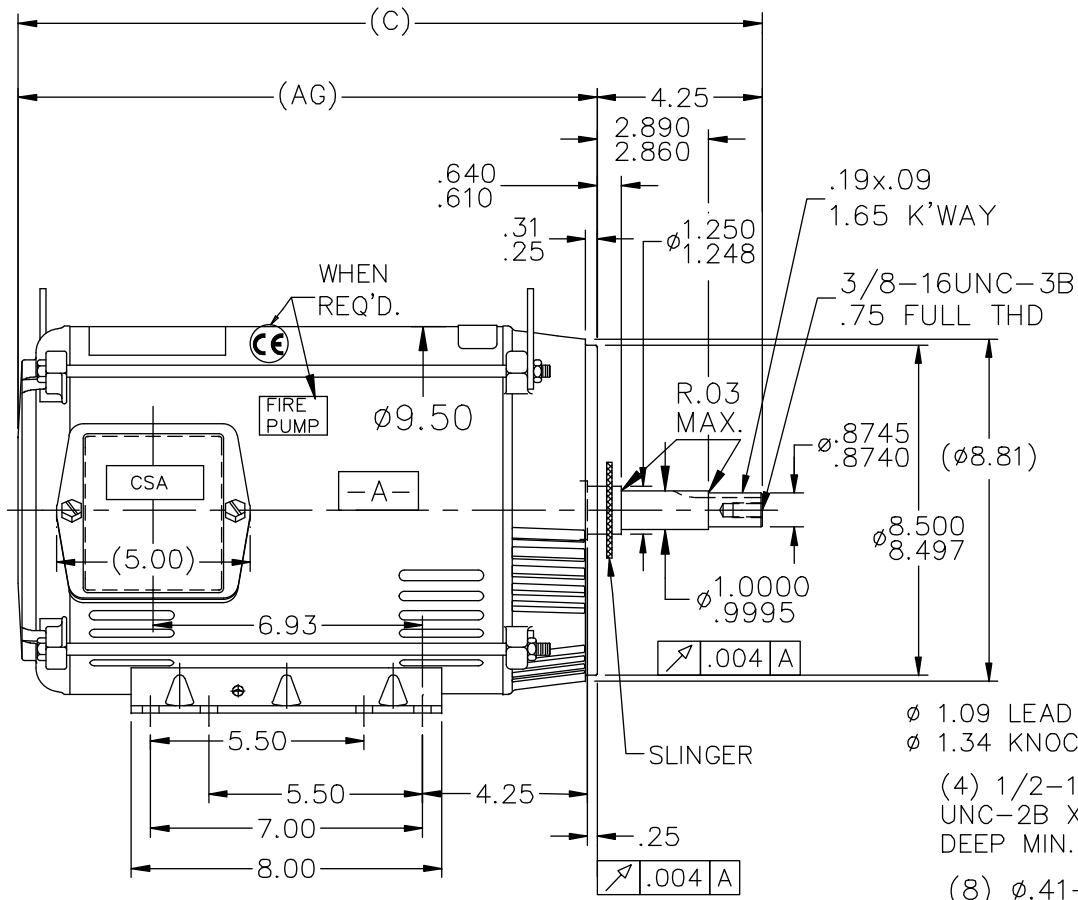
Nameplate Specifications

Output HP	15 Hp	Output KW	11.2 kW
Frequency	60 Hz	Voltage	230/460 V
Current	34/17 A	Speed	3510 rpm
Service Factor	1.15	Phase	3
Duty	Continuous	Insulation Class	F
Frame	215JM	Enclosure	Open Drip Proof
Thermal Protection	No	Ambient Temperature	40 °C
UL	Recognized	CSA	Y
CE	Y	Number of Speeds	1

Technical Specifications


Electrical Type	Polyphase	Starting Method	Across The Line
Poles	2	Rotation	Reversible
Mounting	Rigid Base	Drive End Bearing	Ball
Opp Drive End Bearing	Ball	Frame Material	Rolled Steel
Shaft Type	Keyed	Overall Length	20.41 in
Frame Length	12.40 in	Shaft Diameter	1.250 in
Shaft Extension	4.25 in		
Connection Drawing	A-EE7308-CY	Outline Drawing	SS86566CY

This is an uncontrolled document once printed or downloaded and is subject to change without notice. Date Created:10/12/2021



DASH	FR.	C	AG	BS	MOUNTING
965	213/215JM	17.66	13.41	5.43	F1 ONLY
1115	213/215JM	19.16	14.91	6.93	F1/F2
1240	213/215JM	20.41	16.16	8.18	F1 ONLY

- NOTES:
- NAMEPLATE TO BE READ FROM C'BOX SIDE OF MOTOR.
 - BOX CAN BE MOUNTED IN 90° STEPS.
 - BOX CAN BE MOUNTED ON OPPOSITE SIDE BY REMOVING BRACKETS AND TURNING FRAME 180° (EXCEPT AS NOTED)

			TOLERANCES UNLESS SPECIFIED			DRAWN GR 07/19/12	
			DEC.	INCHES		CHK SS 07/19/12	
			.X	±.1		APPD	
			.XX	±.03		SCALE 1=5	
			.XXX	±.005	TITLE OUTLINE 210JM FR.-BB-TS-DR.PR.-C' FACE	REF SS86566	
A	F1/F2 NOTE UPDATED IN TABLE	GR 12/14/12	SR .XXXX	±.0005		FMF	
NO.	REVISION	BY & DATE	CHK ANG	±7'30"	FINISH	PREV	
THIS DRAWING IN DESIGN AND DETAIL IS OUR PROPERTY AND MUST NOT BE USED EXCEPT IN CONNECTION WITH OUR WORK ALL RIGHTS OF DESIGN AND INVENTION ARE RESERVED THIS IS AN ELECTRONICALLY GENERATED DOCUMENT - DO NOT SCALE THIS PRINT			RFP	CAD FILE SS86566CY		SIZE A	DRAWING NO. SS86566CY
			DIST LB			PAGE OF	REV. A



NO.	REVISION	BY & DATE	CHK	ANG	TOLERANCES UNLESS SPECIFIED		DRAWN RM	11/20/1990
					DEC.	INCHES		
5	CHG TO REGAL LOGO	SL 09/10/2015	AB				CHK	ML 11/21/1990
4	REVISED IEC NOTATIONS	MSG 11/15/2011	CMN	.X	±.1		APPD	SAS 04/24/2003
3	ADDED IEC NOTATIONS... (U1), (V1) ETC. MU95194	MSG 5/10/2010	MJS	.XX	±.02		SCALE	1=1
2	ADDED THE OPTIONAL CORD CONNECTION MU46318	RDH 04/24/2003	DRS	.XXX	±.005		REF	
1	REDRAWN	RM 11/20/1990		.XXXX	±.0005		FMF	
					±7'30"		PREV	
THIS DRAWING IN DESIGN AND DETAIL IS OUR PROPERTY AND MUST NOT BE USED EXCEPT IN CONNECTION WITH OUR WORK ALL RIGHTS OF DESIGN AND INVENTION ARE RESERVED THIS IS AN ELECTRONICALLY GENERATED DOCUMENT - DO NOT SCALE THIS PRINT					RFP	CAD FILE ee7308	SIZE	DRAWING NO. PAGE OF REV.
					DIST WP		A	EE7308 5