

PRODUCT INFORMATION PACKET



Model No: E316M2

Catalog No: E316M2

General Purpose Motor, 7.5 HP, 3 Ph, 60 Hz, 200 V, 1800 RPM, S213T Frame, DP



Regal and Century are trademarks of Regal Rexnord Corporation or one of its affiliated companies.

©2022 Regal Rexnord Corporation, All Rights Reserved. MC017097E





Nameplate Specifications

Output HP	7.5 Hp	Output KW	5.6 kW
Frequency	60 Hz	Voltage	200 V
Current	21.4 A	Speed	1750 rpm
Service Factor	1.15	Phase	3
Duty	Continuous	Insulation Class	F
Frame	S213T	Enclosure	Drip Proof
Thermal Protection	No Protection	Ambient Temperature	40 °C
UL	Recognized	CSA	Y
CE	N	Number of Speeds	1

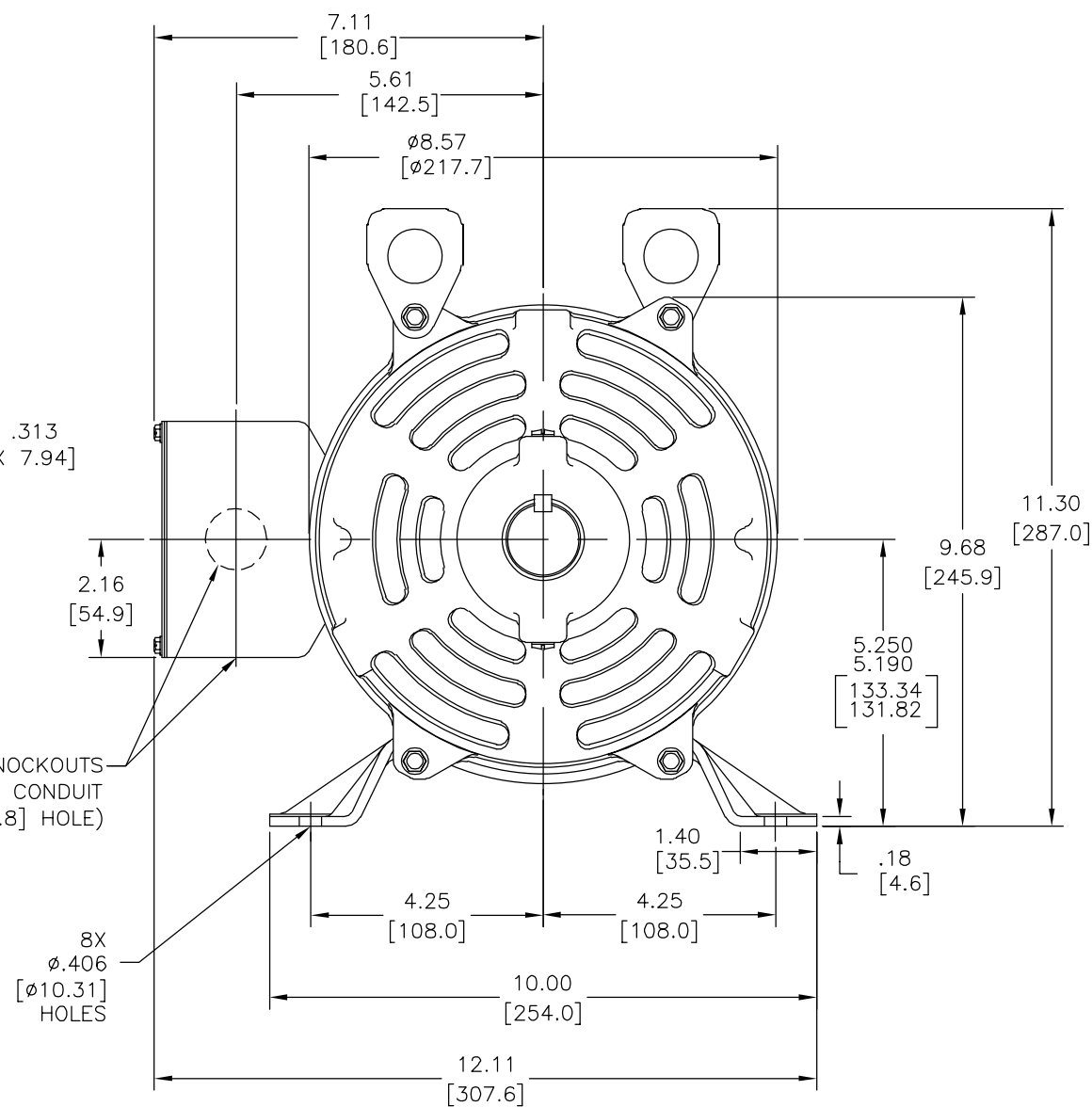
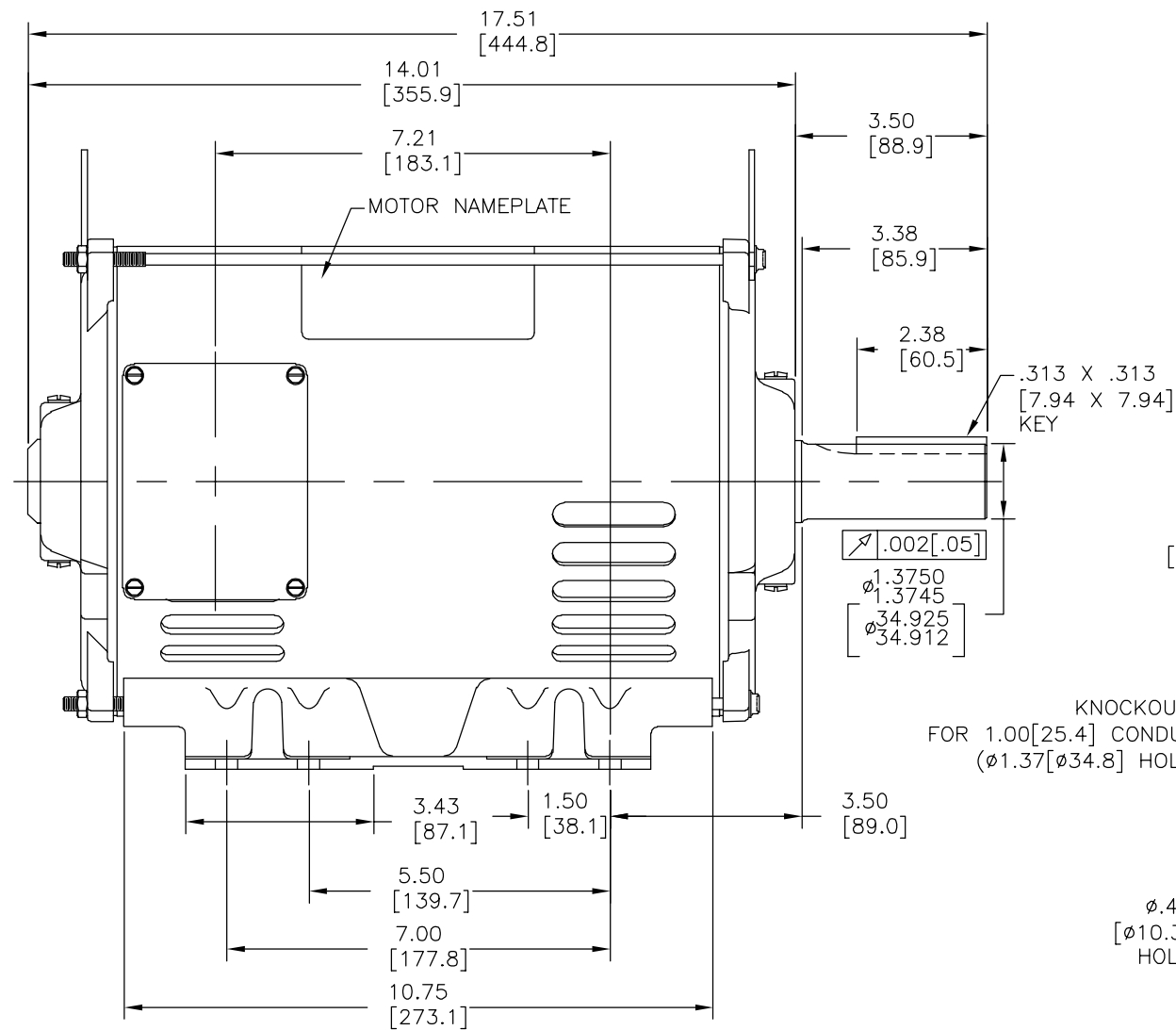
Technical Specifications

Electrical Type	Three Phase	Starting Method	Across The Line
Poles	4	Rotation	Counterclockwise
Mounting	Rigid Base	Drive End Bearing	Ball
Opp Drive End Bearing	Ball	Frame Material	Rolled Steel
Shaft Type	Keyed	Overall Length	17.51 in
Frame Length	11.00 in	Shaft Diameter	1.375 in
Shaft Extension	3.5 in		
Connection Drawing	D0000398-001	Outline Drawing	E316M2-S01

This is an uncontrolled document once printed or downloaded and is subject to change without notice. Date Created:11/28/2022

MOTOR DESCRIPTION:
3 PHASE OPEN DRIPPROOF STEEL SHELL 213T OR 215T MOUNTING.
OTHER MOUNTING ORIENTATIONS ARE ACCEPTABLE; HOWEVER WHEN
MOUNTED OTHER THAN HORIZONTAL; MOTOR WILL NOT BE DRIPPROOF
AS DEFINED BY NEMA.

REV	ECO	REV BY	DATE	APPD	DATE
A	0026190	D.MUÑOZ	08-16-2012	H.SANCHEZ	08-16-2012



NOTES:

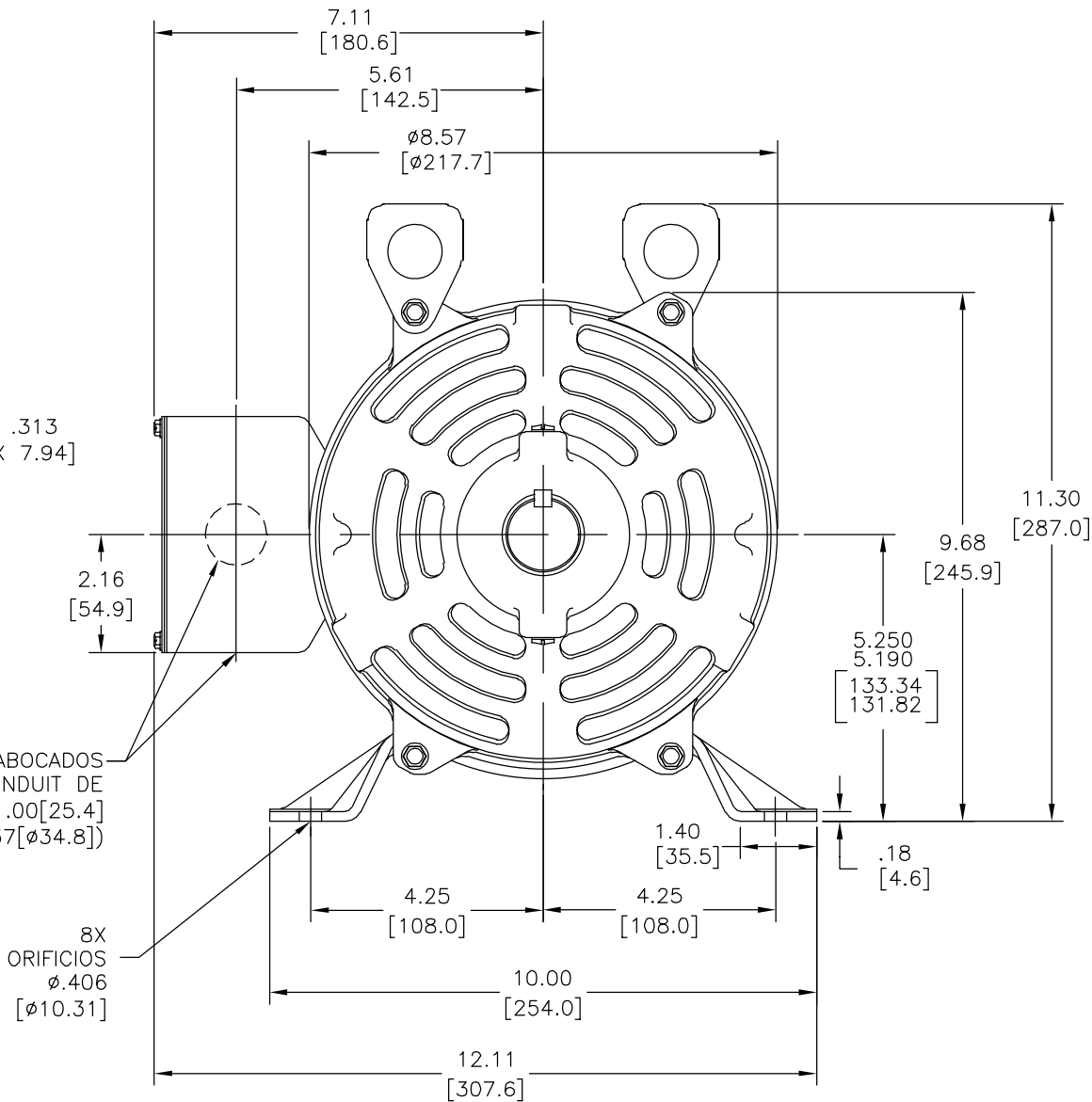
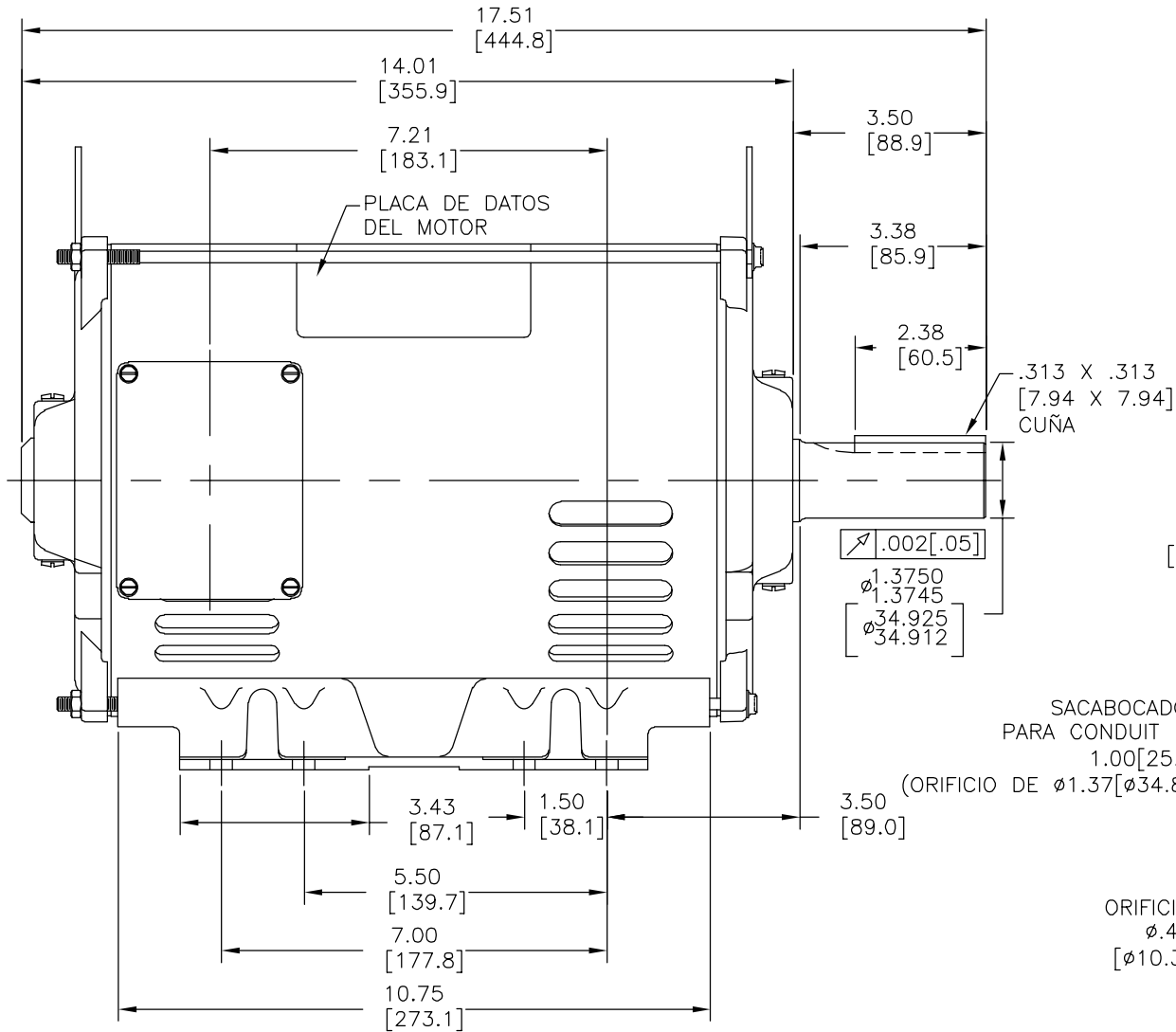
1. CONDUIT KNOCKOUTS ARE PROVIDED IN TERMINAL BOX TO ALLOW CONDUIT TO BE ATTACHED AT 6:00 O'CLOCK AND 3:00 O'CLOCK POSITION WITHOUT ROTATING THE BOX. TO PROVIDE ACCESS AT 12:00 O'CLOCK AND 9:00 O'CLOCK THE BOX MUST BE REMOVED, ROTATED 180°, AND REATTACHED.
2. MOTOR CAN BE CONVERTED FROM AN F1 TO AN F2 ASSEMBLY.
3. MOTOR VENTILATION: AIR INTAKE THROUGH OPENINGS IN THE FACE OF EACH BRACKET AND THEN EXHAUSTED THROUGH THE SLOTS ON EACH END OF THE SHELL.

GEOMETRIC CHARACTERISTICS & SYMBOLS □ FLATNESS — STRAIGHTNESS ∠ ANGULARITY ⊥ PERPENDICULARITY (SQUARENESS) // PARALLELISM ○ ROUNDNESS (CIRCULARITY) ⊙ CYLINDRICITY △ PROFILE OF ANY SURFACE ⌒ PROFILE OF ANY LINE ↗ RUNOUT ⊕ TRUE POSITION ◎ CONCENTRICITY ≡ SYMMETRY ASME Y14.5M 1994	UNLESS OTHERWISE SPECIFIED DIM. TOLERANCES ARE AS FOLLOWS: INCH X XX XXX XXXX mm ±0.1 ±0.02 ±0.005 ±0.0005 mm ±0.5 ±0.13 ±0.013 ANG. ±.50 DEG REMOVE BURRS & BREAK SHARP EDGES: INCH .003-.015 mm 0.1-0.4 CORNER FILLETS TO: INCH .020 mm 0.5 MACHINE SURFACES: INCH 125 mm 3.2 METRIC DIMS. SHOWN IN [BRACKETS]	DR BY: D.MUÑOZ 08-16-2012	REGAL REGAL-BELOIT CORPORATION DESCRIPTION MODEL-IHP OUTLINE SIZE C DWG NO E316M2 SCALE NONE SHEET 1
		APPD: D.JAMORA 08-16-2012	
		THIRD ANGLE PROJECTION EDS DATE 11-11-2011 FORMAT REV H	
		CONFIDENTIAL: THIS DRAWING AND ITS INFORMATION ARE THE EXCLUSIVE AND CONFIDENTIAL PROPERTY OF REGAL-BELOIT CORPORATION AND ARE NOT TO BE DISCLOSED, DUPLICATED, DISTRIBUTED OR OTHERWISE USED WITHOUT THE WRITTEN CONSENT OF REGAL-BELOIT CORPORATION. -ALL RIGHTS RESERVED.	

DESCRIPCION DEL MOTOR:


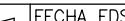
3 FASES MONTAJE DE CARCAZA DE ACERO ABIERTA 213T O 215T
OTRAS OPERACIONES DE MONTAJE SON ACEPTABLES; SIN EMBARGO
CUANDO SEA MONTADA DIFERENTE A LA FORMA HORIZONTAL; EL MOTOR
NO SERA ABIERTO COMO ESTA DEFINIDO POR NEMA.

REVISION:	ECO	REVISADO POR:	FECHA:	APROBADO POR:	FECHA:
A	0026190	D.MUÑOZ	08-16-2012	H.SANCHEZ	08-16-2012



NOTAS:

1. LOS SACABOCADOS ESTAN COLOCADOS EN LA CAJA DE TERMINALES PARA PERMITIR AL CONDUIT SER AGREGADO EN LA POSICION DE LAS 6:00 Y 3:00 SIN ROTAR LA CAJA. PARA PERMITIR EL ACCESO A LAS 12:00 Y 9:00 LA CAJA DEBE SER REMOVIDA Y GIRARLA 180° Y VUELATA A COLOCAR.
2. EL MOTOR PUEDE CONVERTIRSE DE UN ENSAMBLE F1 A UN F2.
3. VENTILACION DEL MOTOR: EL AIRE ENTRA ATRAVEZ DE LAS ABERTURAS EN LA CARA DE CADA TAPA Y ES EXPULSADO POR LAS RANURAS DE CADA LADO DE LA CARCAZA.

CARACTERISTICAS DE GEOMETRIA Y SIMBOLOS □ PLANICIDAD — RECTITUD ∠ ANGULARIDAD ⊥ PERPENDICULARIDAD (A ESCUADRA) // PARALELISMO ○ REDONDEZ (CIRCULARIDAD) ⊘ CILINDRICIDAD △ PERFIL DE CUALQUIER SUPERFICIE ∧ PERFIL DE CUALQUIER LINEA ↗ VARIACION ⊕ POSICION REAL ◎ CONCENTRICIDAD ≡ SIMETRIA ASME Y14.5M 1994	A MENOS QUE SE ESPECIFIQUE DE OTRA MANERA, LAS TOLERANCIAS DE LAS DIMS; SON LAS SIGUIENTES: PULG ±.1 ±.02 ±.005 ±.0005 mm ±0.5 ±0.13 ±0.013 ANG. ±.50 GRADOS ELIMINAR REBABAS Y ORILLAS FILOSAS DEL BORDE. PULG .003-.015 mm 0.1-0.4 FILETEAR ESQUINA: PULG .020 mm 0.5 MAQUINAR SUPERFICIES PULG 125 mm 3.2 DIMS METRICAS MOSTRADAS [PARENTESIS]	DIBUJADO POR: D.MUNOZ	08-16-2012	<div> REGAL-BELOIT CORPORATION</div>			
		APROBADO POR: D.JAMORA	08-16-2012	DESCRIPCION: MODEL-IHP OUTLINE			
		TERCER ANGULO DE PROYECCION		FECHA EDS: 11-11-2011 REV. FORMATO: H	TAMAÑO: C		NUMERO DE DIBUJO: E316M2
		CONFIDENCIAL: ESTE DIBUJO Y SU INFORMACION SON PROPIEDAD DE USO EXCLUSIVO Y CONFIDENCIAL DE REGAL-BELOIT CORPORATION. Y NO DEBERAN SER REVELADOS, DUPLICADOS, DISTRIBUIDOS O USARSE DE OTRA MANERA SIN EL CONSENTIMIENTO ESCRITO DE REGAL-BELOIT CORPORATION. -TODOS LOS DERECHOS RESERVADOS.			ESCALA:NONE		HOJA: 1

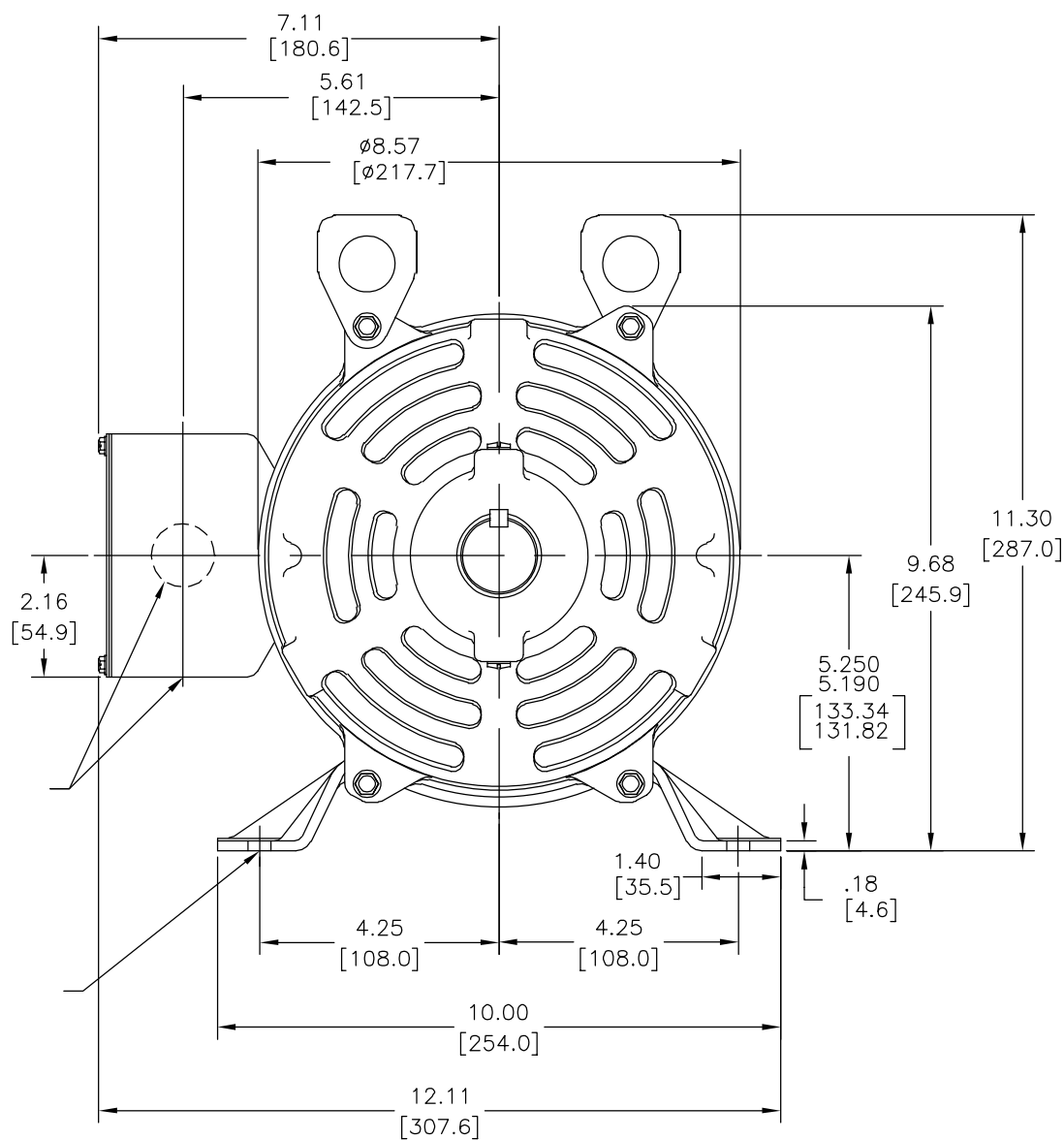
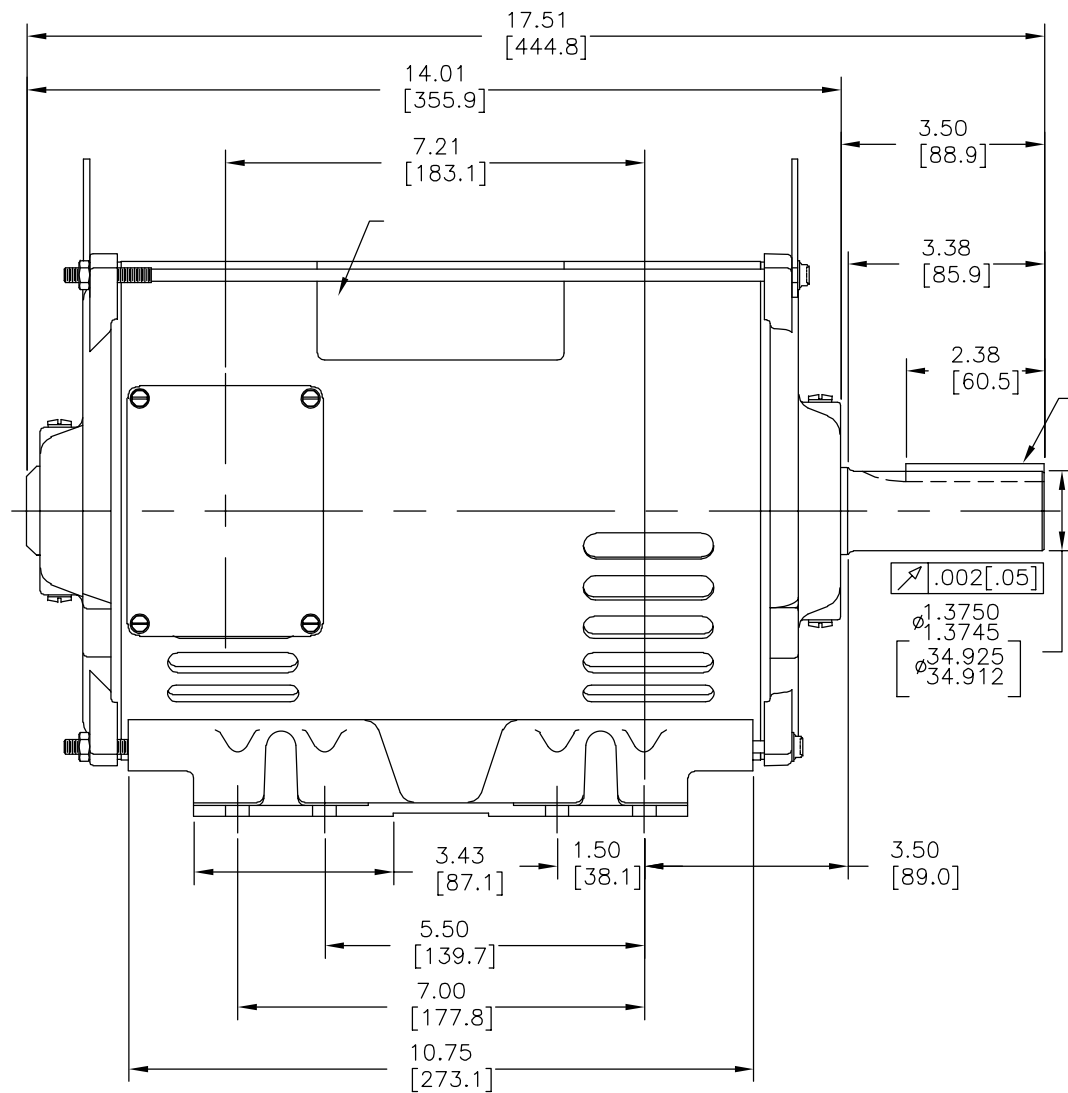
4

3

2

1

版本	ECO	编制	日期	批准	日期
A	0026190	D.MUÑOZ	08-16-2012	H.SANCHEZ	08-16-2012



形位公差
□ 平面度
— 直线度
∠ 倾斜度
⊥ 垂直度
∥ 平行度
○ 圆度
⊙ 圆柱度
△ 面轮廓度
△ 线轮廓度
↗ 圆跳动
⊕ 位置度
⊗ 同轴度
≡ 对称度

ASME Y14.5M 1994

除另有注明
尺寸公差如下:

英寸 X XX XXX XXXX
毫米 ±0.1 ±0.02 ±0.005 ±0.0005
毫米 ±0.5 ±0.13 ±0.013
角度 ±.50 度
清理毛刺和尖棱
英寸 .003-.015 毫米 0.1-0.4
内圆角
英寸 .020 毫米 0.5
表面粗糙度
英制 125 米制 3.2

米制尺寸显示在[]

绘图:

D.MUÑOZ

08-16-2012

批准:

D.JAMORA

08-16-2012

第三角投影



图纸格式发布日期 11-11-2011

图纸格式版本 H

机密: 本图纸及相关信息所有权归REGAL-BELOIT CORPORATION。
未经REGAL-BELOIT CORPORATION书面授权, 不得泄露、
复制、传播或作其他用途。—版权所有



REGAL-BELOIT CORPORATION

名称

MODEL-IHP
OUTLINE

图幅

C

图号

E316M2

比例

NONE

页号

1

4

3

2

1

