

# PRODUCT INFORMATION PACKET



Model No: CPO39

Catalog No: CPO39

Close-Coupled Pump Motor, 5 HP, 3 Ph, 60 Hz, 208-230/460 V, 3600 RPM, 182JP Frame, ODP



Regal and Century are trademarks of Regal Rexnord Corporation or one of its affiliated companies.

©2023 Regal Rexnord Corporation, All Rights Reserved. MC017097E





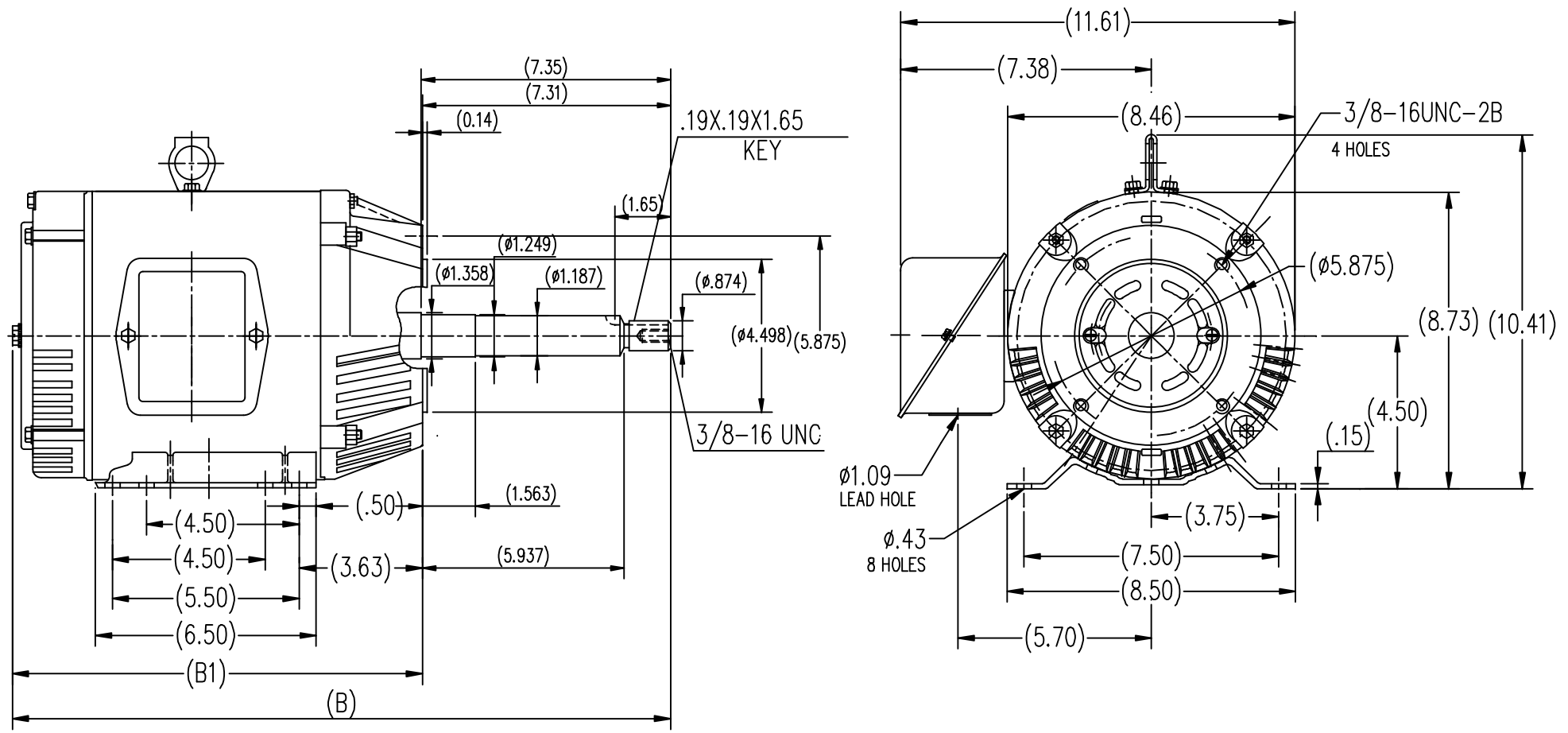
### Nameplate Specifications

Phase	3	Output HP	5 Hp
Output KW	3.7 kW	Voltage	208-230/460 V
Speed	3475 rpm	Service Factor	1.15
Frame	182JP	Enclosure	Open Drip Proof
Thermal Protection	No Protection	Ambient Temperature	40 °C
Frequency	60 Hz	Current	13.7-12.4/6.2 A
Duty	Continuous	Insulation Class	F
UL	Recognized	CSA	Y
Number of Speeds	1		


### Technical Specifications

Electrical Type	POLYPHASE	Starting Method	Across The Line
Poles	2	Rotation	Reversible
Mounting	Rigid Base	Drive End Bearing	Ball
Opp Drive End Bearing	Ball	Frame Material	Rolled Steel
Shaft Type	Keyed	Overall Length	15.64 in
Frame Length	6.73 in	Shaft Diameter	1.249 in
Shaft Extension	4.25 in		
Connection Drawing	A-EE7308	Outline Drawing	SS620570

This is an uncontrolled document once printed or downloaded and is subject to change without notice. Date Created:08/24/2023



182T	12.09	19.44
184T	13.11	20.46
FRAME	B1	B

			TOLERANCES UNLESS SPECIFIED		 <b>REGAL-BELOIT CORPORATION</b>	DRAWN ZXC 05-17-2012	
			DEC.	INCHES		CHK	
			.X	±.1	<b>ODP-182/184JP FR-ROLLED STEEL</b>	APPD	
			.XX	±.03		SCALE	1=4
			.XXX	±.005		REF	
			.XXXX	±.0005		FMF	HWADA
NO.	REVISION	BY & DATE	CHK	ANG	±1/2	FINISH	PREV
THIS DRAWING IN DESIGN AND DETAIL IS OUR PROPERTY AND MUST NOT BE USED EXCEPT IN CONNECTION WITH OUR WORK ALL RIGHTS OF DESIGN AND INVENTION ARE RESERVED THIS IS AN ELECTRONICALLY GENERATED DOCUMENT - DO NOT SCALE THIS PRINT			RFP			CAD FILE	SS620570
			DIST				
						SIZE	DRAWING NO.
						B	SS620570
							REV.



NO.	REVISION	BY & DATE	CHK	ANG	TOLERANCES UNLESS SPECIFIED		DRAWN RM	11/20/1990
					DEC.	INCHES		
5	CHG TO REGAL LOGO	SL 09/10/2015	AB				CHK	ML 11/21/1990
4	REVISED IEC NOTATIONS	MSG 11/15/2011	CMN	.X	±.1		APPD	SAS 04/24/2003
3	ADDED IEC NOTATIONS... (U1), (V1) ETC. MU95194	MSG 5/10/2010	MJS	.XX	±.02		SCALE	1=1
2	ADDED THE OPTIONAL CORD CONNECTION MU46318	RDH 04/24/2003	DRS	.XXX	±.005		REF	
1	REDRAWN	RM 11/20/1990		.XXXX	±.0005		FMF	
					±7'30"		PREV	
THIS DRAWING IN DESIGN AND DETAIL IS OUR PROPERTY AND MUST NOT BE USED EXCEPT IN CONNECTION WITH OUR WORK ALL RIGHTS OF DESIGN AND INVENTION ARE RESERVED THIS IS AN ELECTRONICALLY GENERATED DOCUMENT - DO NOT SCALE THIS PRINT				RFP	CAD FILE ee7308		SIZE	DRAWING NO. PAGE OF REV.
				DIST WP			A	EE7308 5