

PRODUCT INFORMATION PACKET



Model No: CPO25

Catalog No: CPO25

Close-Coupled Pump Motor, 3 HP, 3 Ph, 60 Hz, 575 V, 1800 RPM, 182JP Frame, ODP



Regal and Century are trademarks of Regal Rexnord Corporation or one of its affiliated companies.

©2023 Regal Rexnord Corporation, All Rights Reserved. MC017097E





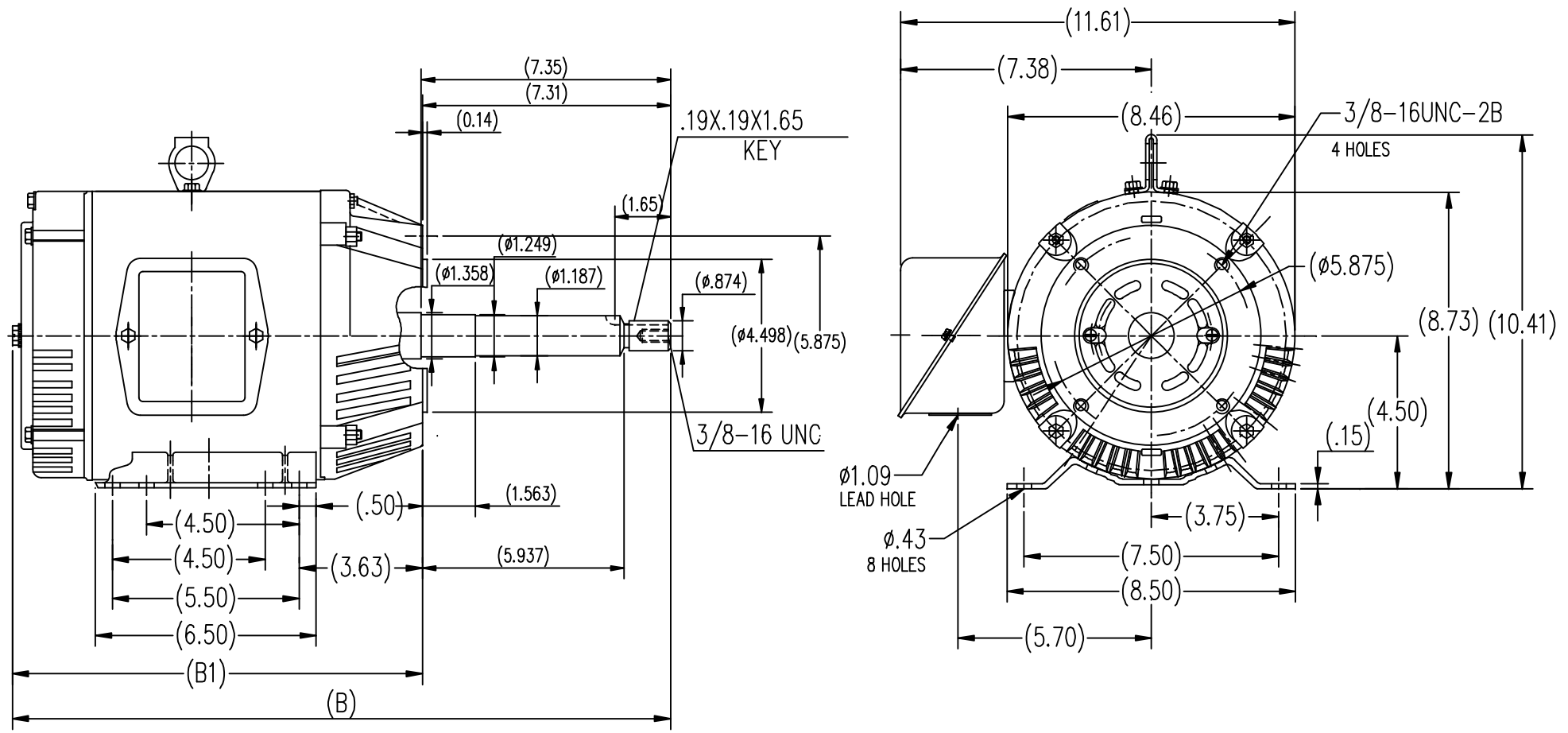
Nameplate Specifications

| | | | |
|--------------------|---------------|---------------------|-----------------|
| Phase | 3 | Output HP | 3 Hp |
| Output KW | 2.2 kW | Voltage | 575 V |
| Speed | 1762 rpm | Service Factor | 1.15 |
| Frame | 182JP | Enclosure | Open Drip Proof |
| Thermal Protection | No Protection | Ambient Temperature | 40 °C |
| Frequency | 60 Hz | Current | 3.04 A |
| Duty | Continuous | Insulation Class | F |
| UL | Recognized | CSA | Y |
| Number of Speeds | 1 | | |


Technical Specifications

| | | | |
|-----------------------|------------|--------------------|-----------------|
| Electrical Type | POLYPHASE | Starting Method | Across The Line |
| Poles | 4 | Rotation | Reversible |
| Mounting | Rigid Base | Drive End Bearing | Ball |
| Opp Drive End Bearing | Ball | Frame Material | Rolled Steel |
| Shaft Type | Keyed | Overall Length | 14.64 in |
| Frame Length | 6.73 in | Shaft Diameter | 1.249 in |
| Shaft Extension | 4.25 in | | |
| Outline Drawing | SS620570 | Connection Drawing | A-EE7300 |

This is an uncontrolled document once printed or downloaded and is subject to change without notice. Date Created:08/24/2023



| | | |
|-------|-------|-------|
| 182T | 12.09 | 19.44 |
| 184T | 13.11 | 20.46 |
| FRAME | B1 | B |

| | | | TOLERANCES UNLESS SPECIFIED | |  REGAL-BELOIT CORPORATION | DRAWN ZXC 05-17-2012 | |
|--|----------|-----------|--------------------------------|--------|---|----------------------|-------------|
| | | | DEC. | INCHES | | CHK | |
| | | | .X | ±.1 | | APPD | |
| | | | .XX | ±.03 | | SCALE | 1=4 |
| | | | .XXX | ±.005 | | REF | |
| | | | .XXXX | ±.0005 | | FMF | HWADA |
| NO. | REVISION | BY & DATE | CHK | ANG | FINISH | PREV | |
| THIS DRAWING IN DESIGN AND DETAIL IS OUR PROPERTY AND MUST NOT BE USED EXCEPT IN CONNECTION WITH OUR WORK ALL RIGHTS OF DESIGN AND INVENTION ARE RESERVED THIS IS AN ELECTRONICALLY GENERATED DOCUMENT - DO NOT SCALE THIS PRINT | | | RFP | | CAD FILE | SS620570 | SIZE |
| | | | DIST | | | | B |
| | | | | | | | DRAWING NO. |
| | | | | | | | SS620570 |
| | | | | | | | REV. |

THREE PHASE - SINGLE VOLTAGE
MOTOR - CONDUIT BOX @ 'A'

TO REVERSE ROTATION:
INTERCHANGE ANY TWO LINE
LEAD CONNECTIONS

TERMINAL BLOCK WHEN SPECIFIED

IF MOTOR HAS 9 LEADS

T1(U1)

T1(U1)

T1(U1)

L1

T2(V1)

T2(V1)

T2(V1)

L2

T3(W1)

T3(W1)

T3(W1)

L3

IF MOTOR HAS 6 LEADS

T1(U1)

T1(U1)

L1

T2(V1)

T2(V1)

L2

T3(W1)

T3(W1)

L3

A-9806 DECAL



VIEW OF TERMINAL END

| OPTIONAL CORD CONNECTION | |
|--------------------------|-------|
| L1 | WHITE |
| L2 | RED |
| L3 | BLACK |

| | | |
|--|-------------------|-------------------------------|
| DRAWING REVISION AC | REVISION BY BS | REV DATE/© DATE 26/07/2022 |
| REQUEST NUMBER CR-0010402 | APPROVED BY SN | DATE 26/07/2022 |
| REQUEST NUMBER DESCRIPTION DRAWING UPDATED | | |
| COPYRIGHT (PER REVISION DATE) REGAL BELOIT AMERICA, INC. ALL RIGHTS RESERVED. PROPRIETARY AND CONFIDENTIAL INFORMATION - THIS DOCUMENT IS THE PROPERTY OF REGAL BELOIT AMERICA, INC. ("OWNER") AND CONTAINS OWNER'S PROPRIETARY INFORMATION. ANY PERSON, CORPORATION OR OTHER FIRM RECEIVING IT IS DEEMED, BY RECEIVING IT, TO AGREE THAT IT, AND/OR ANY PART OF IT, SHALL NOT BE DISCLOSED TO ANY PERSON, CORPORATION OR OTHER ENTITY, DUPLICATED, AND/OR USED, EXCEPT AS EXPRESSLY APPROVED IN WRITING IN ADVANCE BY OWNER. THIS DOCUMENT SHALL BE RETURNED TO OWNER UPON REQUEST. IT MAY BE SUBJECT TO CERTAIN RESTRICTIONS UNDER APPLICABLE EXPORT CONTROL LAWS AND REGULATIONS. | | |

PRIMARY DIMENSIONS ARE INCH
mm DIMENSIONS IN [BRACKETS]
ARE FOR REFERENCE ONLY

| |
|------------------------|
| DRAWN BY DA |
| DATE 03-26-1993 |
| APPROVED BY TB |
| DATE 03-26-1993 |
| REFERENCE |
| THIRD ANGLE PROJECTION |

| | |
|---|--------------------------|
| Regal Beloit America, Inc. | |
| DESCRIPTION CONNECTION DIAGRAM EXTERNAL - SINGLE VOLTAGE - 3Ø MOTOR | |
| MATERIAL | PROCESS/FINISH |
| SIZE A | DRAWING NUMBER EE7300 |
| SHEET 1 OF 1 | |