

# PRODUCT INFORMATION PACKET



Model No: CPE59

Catalog No: CPE59

30 HP Close-Coupled Pump Motor, 3 phase, 3600 RPM, 575 V, 286JM Frame, TEFC  
Close-Coupled Pump Motors



Regal and Century are trademarks of Regal Rexnord Corporation or one of its affiliated companies.  
©2021 Regal Rexnord Corporation, All Rights Reserved. MC017097E





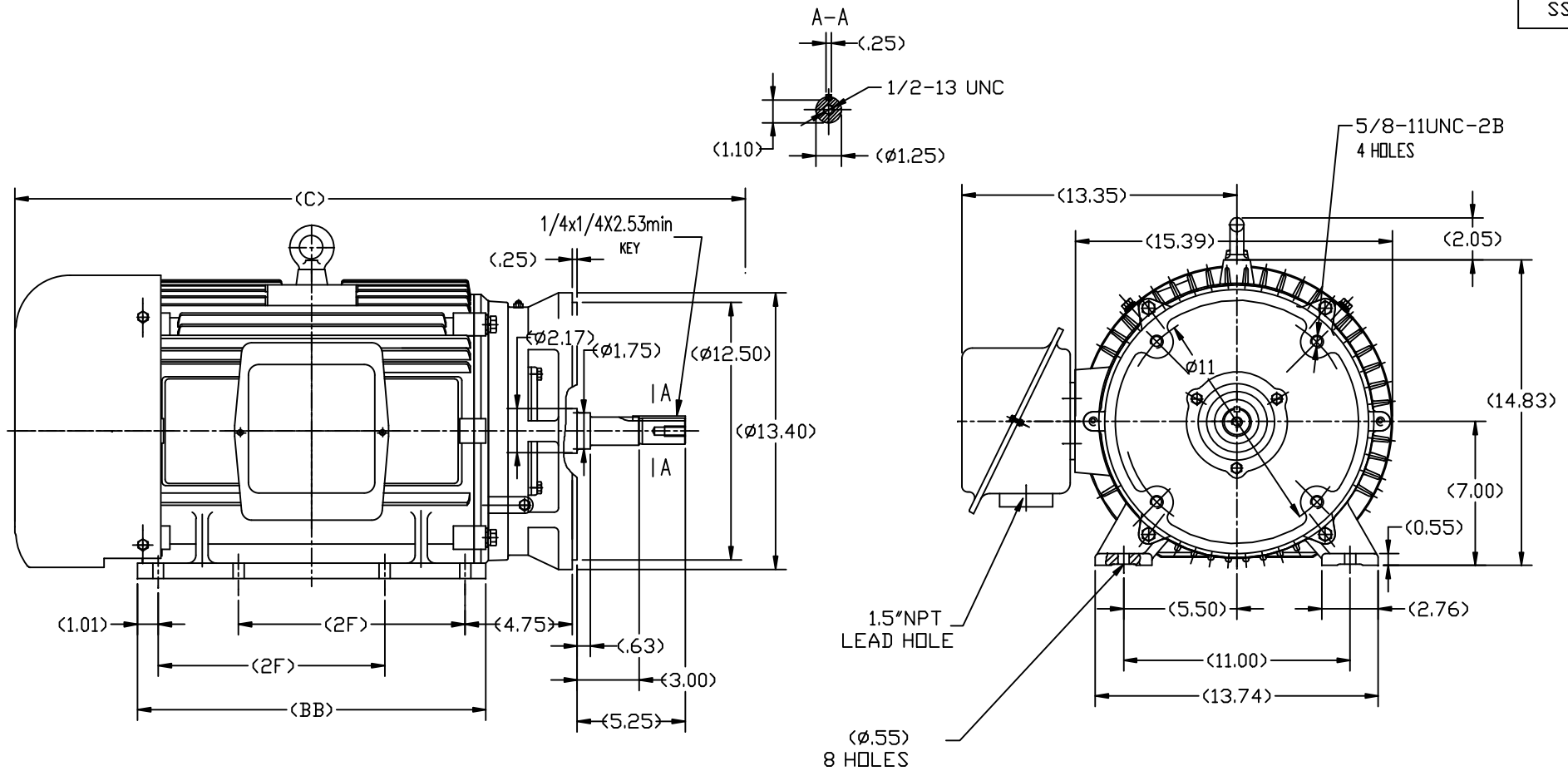
### Nameplate Specifications

|                    |            |                     |                             |
|--------------------|------------|---------------------|-----------------------------|
| Output HP          | 30 Hp      | Output KW           | 22.4 kW                     |
| Frequency          | 60 Hz      | Voltage             | 575 V                       |
| Current            | 36 A       | Speed               | 3560 rpm                    |
| Service Factor     | 1.15       | Phase               | 3                           |
| Duty               | Continuous | Insulation Class    | F                           |
| Frame              | 286JM      | Enclosure           | Totally Enclosed Fan Cooled |
| Thermal Protection | None       | Ambient Temperature | 40 °C                       |
| UL                 | Recognized | CSA                 | Y                           |
| CE                 | Y          | Number of Speeds    | 1                           |

### Technical Specifications

|                       |            |                    |                 |
|-----------------------|------------|--------------------|-----------------|
| Electrical Type       | POLYPHASE  | Starting Method    | Across The Line |
| Poles                 | 2          | Rotation           | Reversible      |
| Mounting              | Rigid Base | Drive End Bearing  | Ball            |
| Opp Drive End Bearing | Ball       | Frame Material     | Cast Iron       |
| Shaft Type            | Keyed      | Overall Length     | 32.10 in        |
| Frame Length          | 15.74 in   | Shaft Diameter     | 1.750 in        |
| Shaft Extension       | 5.25 in    |                    |                 |
| Outline Drawing       | SS620565   | Connection Drawing | A-EE7300        |

This is an uncontrolled document once printed or downloaded and is subject to change without notice. Date Created:10/12/2021



|       |       |       |       |
|-------|-------|-------|-------|
| 284TC | 30.92 | 15.75 | 9.50  |
| 286TC | 32.1  | 16.93 | 11.00 |
| FRAME | C     | BB    | 2F    |

| TOLERANCES UNLESS SPECIFIED   |          | DEC. INCHES |        | REGAL-BELOIT CORPORATION                        |          | DRAWN Lee 05-16-2012 |                |
|---|----------|-------------|--------|---|----------|----------------------|----------------|
| .X  | ±.1      | .XX         | ±.03   | TITLE<br>OUTLINE<br>TEFC-284/286JM FR-CAST IRON |          | CHK                  | HPH 05-16-2012 |
| .XXX  | ±.005    | .XXXX       | ±.0005 |   |          | APPD                 | JGX 05-16-2012 |
| .XXXX   | ±.0005   | .XXXX       | ±.0005 |   |          | SCALE                | 2=13           |
| NO.   | REVISION | BY & DATE   | CHK    | ANG   | ±1/2     | MAT'L.               | REF            |
| THIS DRAWING IN DESIGN AND DETAIL IS OUR PROPERTY AND MUST NOT BE USED EXCEPT IN CONNECTION WITH OUR WORK. ALL RIGHTS OF DESIGN AND INVENTION ARE RESERVED. THIS IS AN ELECTRONICALLY GENERATED DOCUMENT - DO NOT SCALE THIS PRINT. |          |             |        | RFP   | CAD FILE | SS620565             | SIZE           |
|   |          |             |        | DIST  |          |                      | B              |
|   |          |             |        |   |          |                      | SS620565       |
|   |          |             |        |   |          |                      | REV.           |

# THREE PHASE - SINGLE VOLTAGE MOTOR - CONDUIT BOX @ 'A'

TO REVERSE ROTATION:  
INTERCHANGE ANY TWO  
LINE LEAD CONNECTIONS.

## TERMINAL BLOCK WHEN SPECIFIED



### IF MOTOR HAS 6 LEADS



A-9806 DECAL

### OPTIONAL CORD CONNECTION



|   |                    |                    |
|---|--------------------|--------------------|
| DRAWING REVISION<br>AB  | REVISION BY<br>JJB | DATE<br>06-27-2017 |
| ECO<br>ECO-0125361  | APPROVED BY<br>TB  | DATE<br>06-27-2017 |
| ECO DESCRIPTION<br>UPDATED TO CURRENT STANDARDS   |                    |                    |
| <small>COPYRIGHT REGAL BELOIT AMERICA, INC. ALL RIGHTS RESERVED.<br/>         PROPRIETARY AND CONFIDENTIAL INFORMATION - THIS DOCUMENT IS THE PROPERTY OF<br/>         REGAL BELOIT AMERICA, INC. ("OWNER") AND CONTAINS OWNER'S PROPRIETARY<br/>         INFORMATION. ANY PERSON, CORPORATION OR OTHER FIRM RECEIVING IT IS DEEMED,<br/>         BY RECEIVING IT, TO AGREE THAT IT, AND/OR ANY PART OF IT, SHALL NOT BE DISCLOSED<br/>         TO ANY PERSON, CORPORATION OR OTHER ENTITY, DUPLICATED, AND/OR USED, EXCEPT<br/>         AS EXPRESSLY APPROVED IN WRITING IN ADVANCE BY OWNER. THIS DOCUMENT SHALL<br/>         BE RETURNED TO OWNER UPON REQUEST. IT MAY BE SUBJECT TO CERTAIN<br/>         RESTRICTIONS UNDER APPLICABLE EXPORT CONTROL LAWS AND REGULATIONS.</small> |                    |                    |

|                           |
|---------------------------|
| DRAWN BY<br>DA            |
| DATE<br>03-26-1993        |
| APPROVED BY<br>TB         |
| DATE<br>03-26-1993        |
| REFERENCE                 |
| THIRD ANGLE<br>PROJECTION |



Regal Beloit America, Inc.

DESCRIPTION  
**CONNECTION DIAGRAM**  
EXTERNAL - SINGLE VOLTAGE - 3Ø MOTOR

MATERIAL PROCESS/FINISH

|           |                          |                 |
|-----------|--------------------------|-----------------|
| SIZE<br>A | DRAWING NUMBER<br>EE7300 | SHEET<br>1 OF 1 |
|-----------|--------------------------|-----------------|