

# PRODUCT INFORMATION PACKET



Model No: CPE48

Catalog No: CPE48

20 HP Close-Coupled Pump Motor, 3 phase, 3600 RPM, 208-230/460 V, 256JP Frame, TEFC  
Close-Coupled Pump Motors



Regal and Century are trademarks of Regal Rexnord Corporation or one of its affiliated companies.  
©2021 Regal Rexnord Corporation, All Rights Reserved. MC017097E





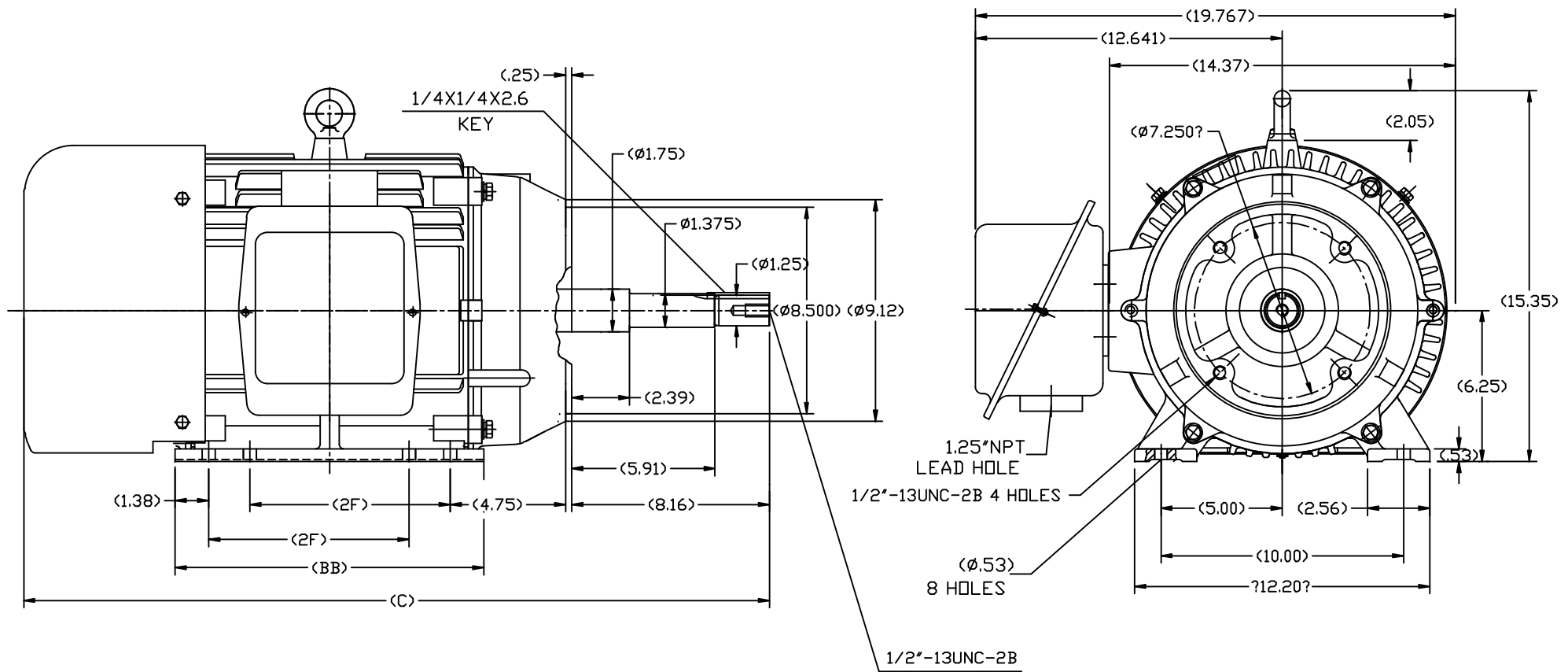
### Nameplate Specifications

Output HP	20 Hp	Output KW	14.9 kW
Frequency	60 Hz	Voltage	208-230/460 V
Current	28.5 A	Speed	3525 rpm
Service Factor	1.15	Phase	3
Duty	Continuous	Insulation Class	F
Frame	256JP	Enclosure	Totally Enclosed Fan Cooled
Thermal Protection	None	Ambient Temperature	40 °C
UL	Recognized	CSA	Y

### Technical Specifications

Electrical Type	POLYPHASE	Starting Method	Across The Line
Poles	2	Rotation	Reversible
Mounting	Rigid Base	Drive End Bearing	Ball
Opp Drive End Bearing	Ball	Frame Material	Cast Iron
Shaft Type	Keyed	Overall Length	30.71 in
Frame Length	12.59 in	Shaft Diameter	1.750 in
Shaft Extension	8.16 in		
Outline Drawing	SS620567	Connection Drawing	A-EE7308K

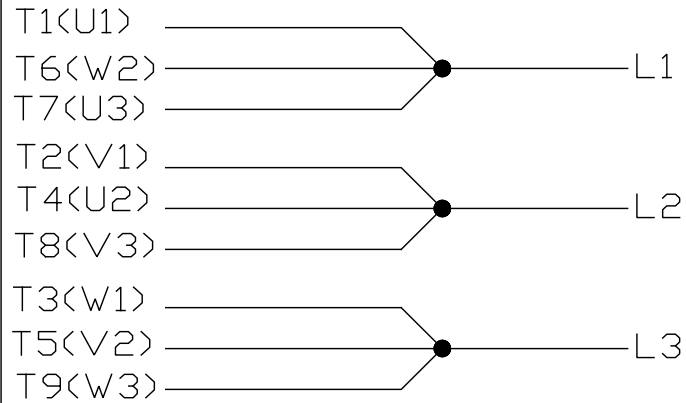
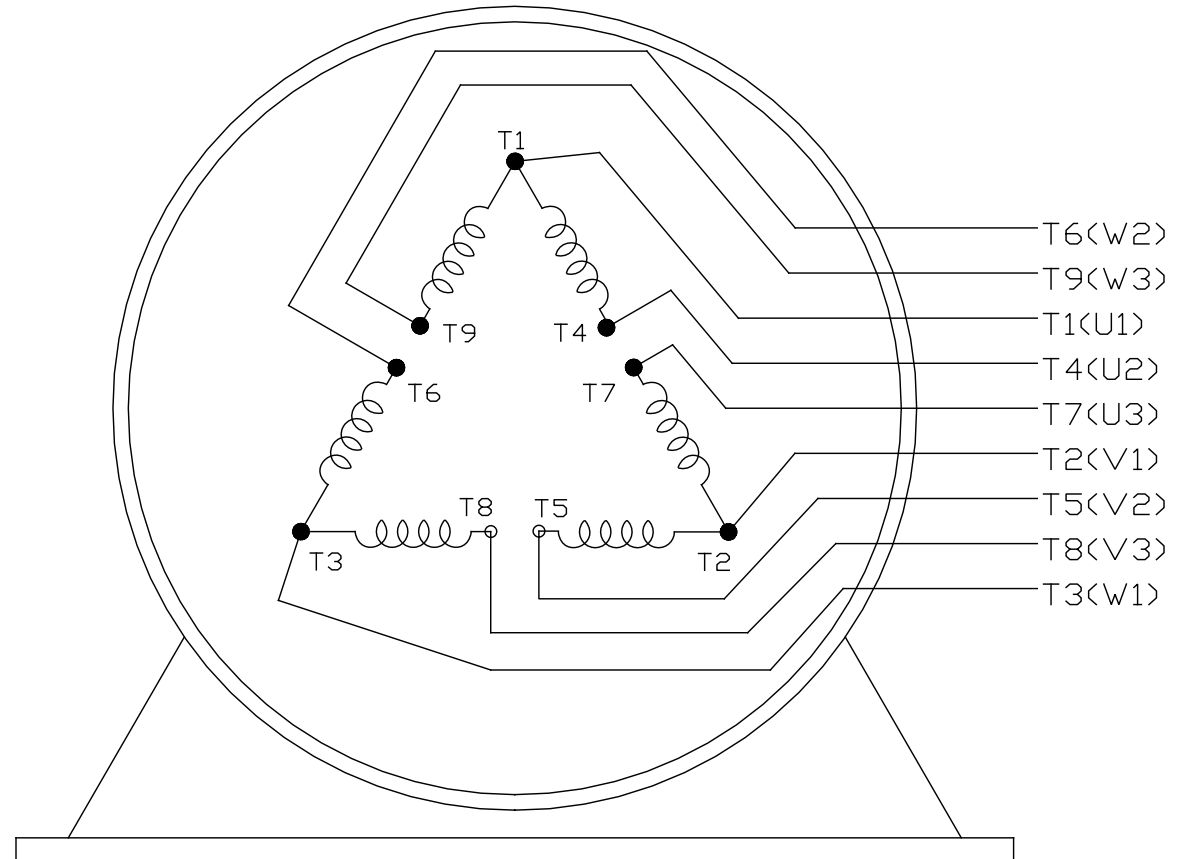
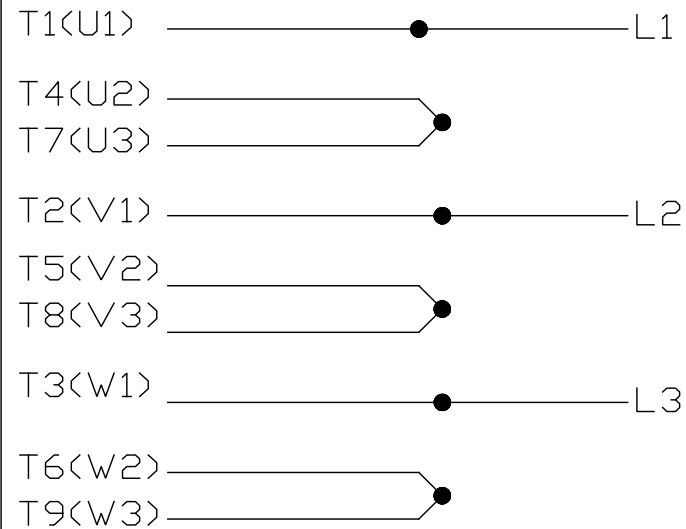
This is an uncontrolled document once printed or downloaded and is subject to change without notice. Date Created:10/12/2021




254	29.51	12.80	8.25
256	30.71	13.98	10.00
FRAME	C	BB	2F

TOLERANCES UNLESS SPECIFIED				REGAL-BELOIT CORPORATION		DRAWN L.S.J 05-16-2012	
DEC.	INCHES					CHK	
.X	±.1					APPD	
.XX	±.03					SCALE	1=4
.XXX	±.005					REF	
.XXXX	±.0005					FMF	HWADA
NO.	REVISION	BY & DATE	CHK	ANG	±1/2	FINISH	PREV
THIS DRAWING IN DESIGN AND DETAIL IS OUR PROPERTY AND MUST NOT BE USED EXCEPT IN CONNECTION WITH OUR WORK. ALL RIGHTS OF DESIGN AND INVENTION ARE RESERVED. THIS IS AN ELECTRONICALLY GENERATED DOCUMENT - DO NOT SCALE THIS PRINT				RFP	CAD FILE	SS620567	SIZE
				DIST			DRAWING NO.
							B
							SS620567
							REV.

EE7308K

LOW VOLTAGEHIGH VOLTAGE

VIEW OF TERMINAL END

			TOLERANCES UNLESS SPECIFIED			 <b>REGAL - BELOIT CORPORATION</b>	DRAWN PGK 06-04-1997		
NO.	REVISION	BY & DATE	CHK	ANG	± 7'30"		CHK	ML	06-05-1997
E	CORRECTED IEC MARKINGS ECD-0111208	WGJ 01-23-2017	EMH	DEC.	INCHES	<b>TITLE</b> CONNECTION DIAGRAM DELTA CON. - 3Ø - 9 LEADS	APPD	GK	06-15-1997
D	RE-DRAWN WITH REGAL LOGO ECD-0110493	WGJ 09-30-2016	EMH	.X	± .1				
8	ADDED IEC DESIGNATIONS MU95020	TJW 4/30/2010	MJS	.XX	± .02				
7	REVISED HIGH VOLTAGE L2 WAS L3 CN52600-354	MRB 09-21-1998		.XXX	± .005				
6	REDRAWN ON CADD	PGK 06-05-1997		.XXXX	± .0005				
						<b>MAT'L.</b>			
						<b>FINISH</b>			
THIS DRAWING IN DESIGN AND DETAIL IS OUR PROPERTY AND MUST NOT BE USED EXCEPT IN CONNECTION WITH OUR WORK ALL RIGHTS OF DESIGN AND INVENTION ARE RESERVED THIS IS AN ELECTRONICALLY GENERATED DOCUMENT - DO NOT SCALE THIS PRINT							PREV		
							SIZE	DRAWING NO.	PAGE OF
							A	EE7308K	REV.
									E