

# PRODUCT INFORMATION PACKET



Model No: CPE42

Catalog No: CPE42

15 HP Close-Coupled Pump Motor, 3 phase, 3600 RPM, 208-230/460 V, 254JM Frame, TEFC  
Close-Coupled Pump Motors



Regal and Century are trademarks of Regal Rexnord Corporation or one of its affiliated companies.  
©2021 Regal Rexnord Corporation, All Rights Reserved. MC017097E





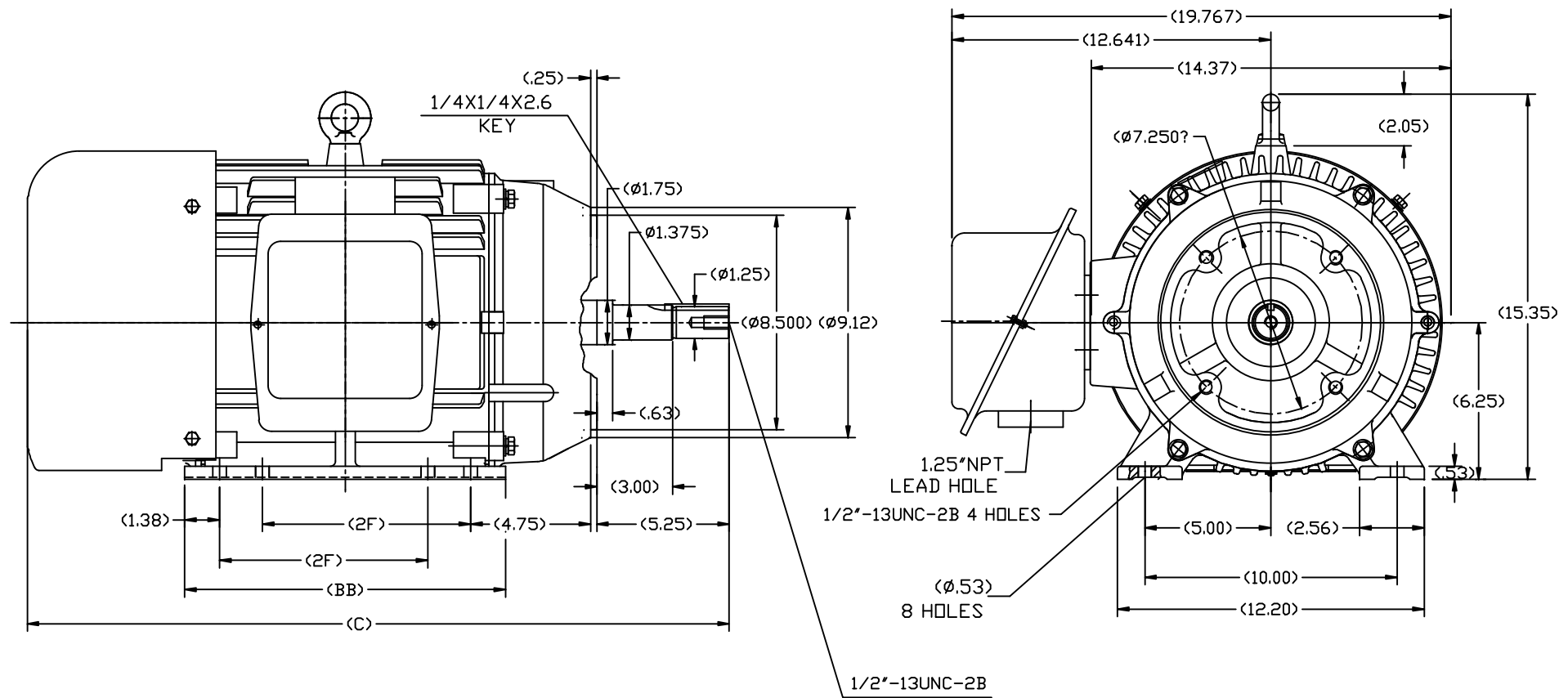
### Nameplate Specifications

Output HP	15 Hp	Output KW	11.2 kW
Frequency	60 Hz	Voltage	208-230/460 V
Current	17.5 A	Speed	3538 rpm
Service Factor	1.15	Phase	3
Duty	Continuous	Insulation Class	F
Frame	254JM	Enclosure	Totally Enclosed Fan Cooled
Thermal Protection	None	Ambient Temperature	40 °C
UL	Recognized	CSA	Y
CE	Y	Number of Speeds	1

### Technical Specifications

Electrical Type	POLYPHASE	Starting Method	Across The Line
Poles	2	Rotation	Reversible
Mounting	Rigid Base	Drive End Bearing	Ball
Opp Drive End Bearing	Ball	Frame Material	Cast Iron
Shaft Type	Keyed	Overall Length	26.60 in
Frame Length	11.41 in	Shaft Diameter	1.750 in
Shaft Extension	5.25 in		
Connection Drawing	A-EE7308K	Outline Drawing	SS620564

This is an uncontrolled document once printed or downloaded and is subject to change without notice. Date Created:10/12/2021



254	26.60	12.80	8.25
256	27.80	13.98	10.00
FRAME	C	BB	2F

		TOLERANCES UNLESS SPECIFIED		REGAL-BELOIT CORPORATION		DRAWN L.S.J 05-16-2012	
		DEC.	INCHES			CHK	
		.X	±.1			APPD	
		.XX	±.03	TITLE	OUTLINE	SCALE	1=4
		.XXX	±.005		254/256TC FR-TEFC-CAST IRON	REF	
		.XXXX	±.0005	MAT'L.		FMF	HWADA
NO.	REVISION	BY & DATE	CHK	ANG	±1/2	FINISH	PREV
THIS DRAWING IN DESIGN AND DETAIL IS OUR PROPERTY AND MUST NOT BE USED EXCEPT IN CONNECTION WITH OUR WORK. ALL RIGHTS OF DESIGN AND INVENTION ARE RESERVED. THIS IS AN ELECTRONICALLY GENERATED DOCUMENT - DO NOT SCALE THIS PRINT				RFP	CAD FILE	SS620564	SIZE
				DIST			DRAWING NO.
							B
							SS620564
							REV.

LOW VOLTAGE

EE7308K

HIGH VOLTAGE

VIEW OF TERMINAL END

			TOLERANCES UNLESS SPECIFIED			 <b>REGAL - BELOIT CORPORATION</b>	DRAWN PGK 06-04-1997		
NO.	REVISION	BY & DATE	CHK	ANG	± 7'30"		CHK	ML	06-05-1997
E	CORRECTED IEC MARKINGS ECD-0111208	WGJ 01-23-2017	EMH	DEC.	INCHES				
D	RE-DRAWN WITH REGAL LOGO ECD-0110493	WGJ 09-30-2016	EMH	.X	± .1				
8	ADDED IEC DESIGNATIONS MU95020	TJW 4/30/2010	MJS	.XX	± .02	TITLE			
7	REVISED HIGH VOLTAGE L2 WAS L3 CN52600-354	MRB 09-21-1998		.XXX	± .005	CONNECTION DIAGRAM			
6	REDRAWN ON CADD	PGK 06-05-1997		.XXXX	± .0005	DELTA CON. - 3Ø - 9 LEADS			
						MAT'L.			
						FINISH			
THIS DRAWING IN DESIGN AND DETAIL IS OUR PROPERTY AND MUST NOT BE USED EXCEPT IN CONNECTION WITH OUR WORK ALL RIGHTS OF DESIGN AND INVENTION ARE RESERVED THIS IS AN ELECTRONICALLY GENERATED DOCUMENT - DO NOT SCALE THIS PRINT						CAD FILE EE7308K	SIZE	DRAWING NO.	PAGE OF
							A	EE7308K	REV.
									E