

# PRODUCT INFORMATION PACKET



Model No: CPE40

Catalog No: CPE40

15 HP Close-Coupled Pump Motor, 3 phase, 1800 RPM, 208-230/460 V, 254JM Frame, TEFC  
Close-Coupled Pump Motors



Regal and Century are trademarks of Regal Rexnord Corporation or one of its affiliated companies.  
©2021 Regal Rexnord Corporation, All Rights Reserved. MC017097E





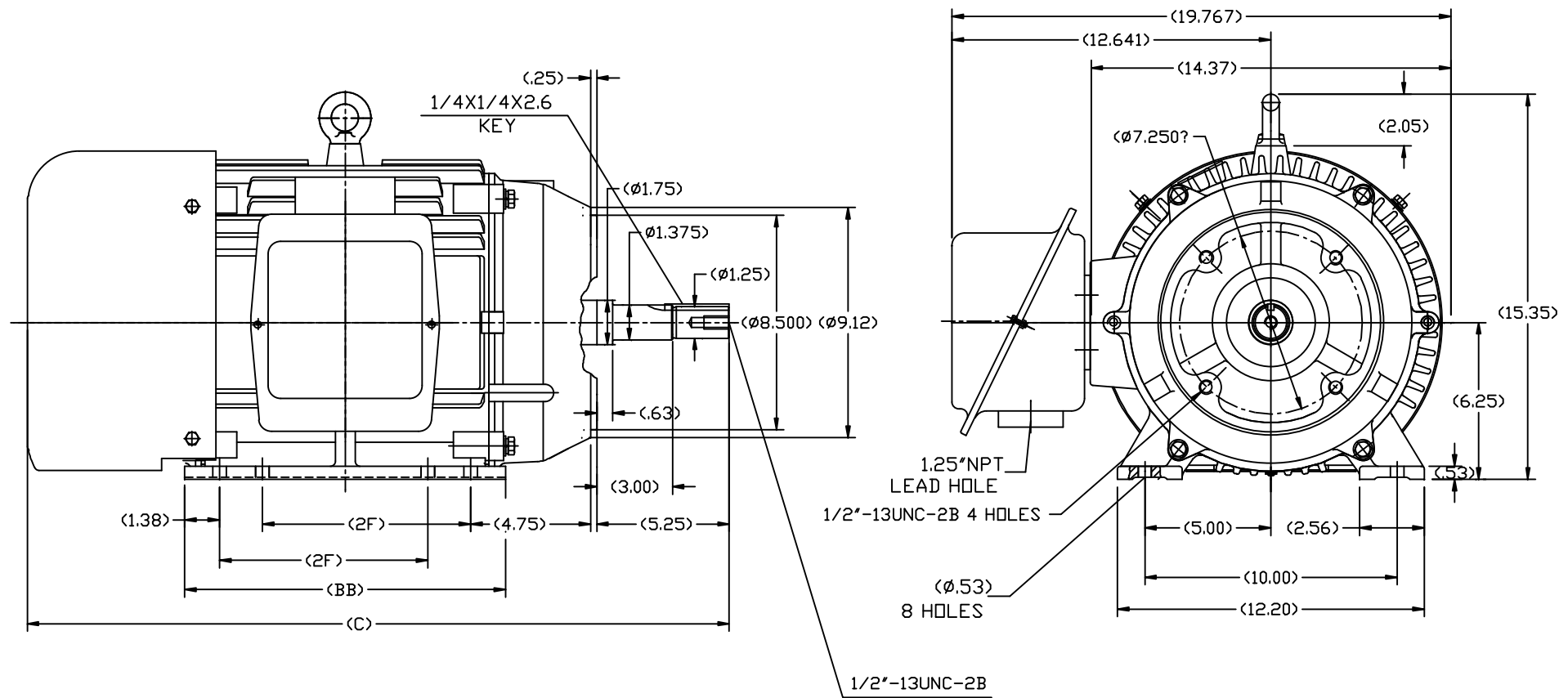
### Nameplate Specifications

Output HP	15 Hp	Output KW	11.2 kW
Frequency	60 Hz	Voltage	208-230/460 V
Current	41.6-37.6/18.8 A	Speed	1775 rpm
Service Factor	1.15	Phase	3
Duty	Continuous	Insulation Class	F
Frame	254JM	Enclosure	Totally Enclosed Fan Cooled
Thermal Protection	None	Ambient Temperature	40 °C
UL	Recognized	CSA	Y
CE	Y	Number of Speeds	1

### Technical Specifications

Electrical Type	POLYPHASE	Starting Method	Across The Line
Poles	4	Rotation	Reversible
Mounting	Rigid Base	Drive End Bearing	Ball
Opp Drive End Bearing	Ball	Frame Material	Cast Iron
Shaft Type	Keyed	Overall Length	26.60 in
Frame Length	11.41 in	Shaft Diameter	1.750 in
Shaft Extension	5.25 in		
Connection Drawing	A-EE7308K	Outline Drawing	SS620564

This is an uncontrolled document once printed or downloaded and is subject to change without notice. Date Created:10/12/2021



254	26.60	12.80	8.25
256	27.80	13.98	10.00
FRAME	C	BB	2F

		TOLERANCES UNLESS SPECIFIED		REGAL-BELOIT CORPORATION		DRAWN L.S.J 05-16-2012	
		DEC.	INCHES			CHK	
		.X	±.1	TITLE OUTLINE 254/256TC FR-TEFC-CAST IRON		APPD	
		.XX	±.03			SCALE	1=4
		.XXX	±.005			REF	
		.XXXX	±.0005	MAT'L.		FMF	HWADA
NO.	REVISION	BY & DATE	CHK	ANG	±1/2	FINISH	PREV
THIS DRAWING IN DESIGN AND DETAIL IS OUR PROPERTY AND MUST NOT BE USED EXCEPT IN CONNECTION WITH OUR WORK. ALL RIGHTS OF DESIGN AND INVENTION ARE RESERVED. THIS IS AN ELECTRONICALLY GENERATED DOCUMENT - DO NOT SCALE THIS PRINT				RFP	CAD FILE	SS620564	SIZE
				DIST			DRAWING NO.
							B
							SS620564
							REV.

LOW VOLTAGE

EE7308K

HIGH VOLTAGE

VIEW OF TERMINAL END

				TOLERANCES UNLESS SPECIFIED		 REGAL - BELOIT CORPORATION	DRAWN PGK 06-04-1997							
E	CORRECTED IEC MARKINGS	ECO-0111208	WGJ 01-23-2017	EMH	DEC.		INCHES	CHK	ML	06-05-1997				
D	RE-DRAWN WITH REGAL LOGO	ECO-0110493	WGJ 09-30-2016	EMH	.X		±.1	APPD	GK	06-15-1997				
8	ADDED IEC DESIGNATIONS	MU95020	TJW 4/30/2010	MJS	.XX		±.02	TITLE		SCALE				
7	REVISED HIGH VOLTAGE L2 WAS L3	CN52600-354	MRB 09-21-1998		.XXX		±.005	CONNECTION DIAGRAM		REF				
6	REDRAWN ON CADD		PGK 06-05-1997		.XXXX	±.0005	DELTA CON. - 3ø - 9 LEADS		FMF					
NO.	REVISION		BY & DATE	CHK	ANG	± 7'30"	MAT'L.		PREV					
						FINISH								
THIS DRAWING IN DESIGN AND DETAIL IS OUR PROPERTY AND MUST NOT BE USED EXCEPT IN CONNECTION WITH OUR WORK ALL RIGHTS OF DESIGN AND INVENTION ARE RESERVED THIS IS AN ELECTRONICALLY GENERATED DOCUMENT - DO NOT SCALE THIS PRINT				RFP		CAD FILE EE7308K		SIZE	DRAWING NO.	PAGE	OF	REV.		
				DIST				A	EE7308K		E			