

# PRODUCT INFORMATION PACKET



Model No: CPE15

Catalog No: CPE15

Close-Coupled Pump Motor, 1.5 HP, 3 Ph, 60 Hz, 208-230/460 V, 1800 RPM, 145JP Frame, TEFC



Regal and Century are trademarks of Regal Rexnord Corporation or one of its affiliated companies.

©2023 Regal Rexnord Corporation, All Rights Reserved. MC017097E





### Nameplate Specifications

|                     |                 |                |                             |
|---------------------|-----------------|----------------|-----------------------------|
| Phase               | 3               | Output HP      | 1.5 Hp                      |
| Output KW           | 1.1 kW          | Voltage        | 208-230/460 V               |
| Speed               | 1740 rpm        | Service Factor | 1.15                        |
| Frame               | 145JP           | Enclosure      | Totally Enclosed Fan Cooled |
| Thermal Protection  | No Protection   | Efficiency     | 86.5 %                      |
| Ambient Temperature | 40 °C           | Frequency      | 60 Hz                       |
| Current             | 4.3-3.90/1.95 A | Duty           | Continuous                  |
| Insulation Class    | F               | UL             | Recognized                  |
| CSA                 | Y               | CE             | Y                           |
| Number of Speeds    | 1               |                |                             |



### Technical Specifications

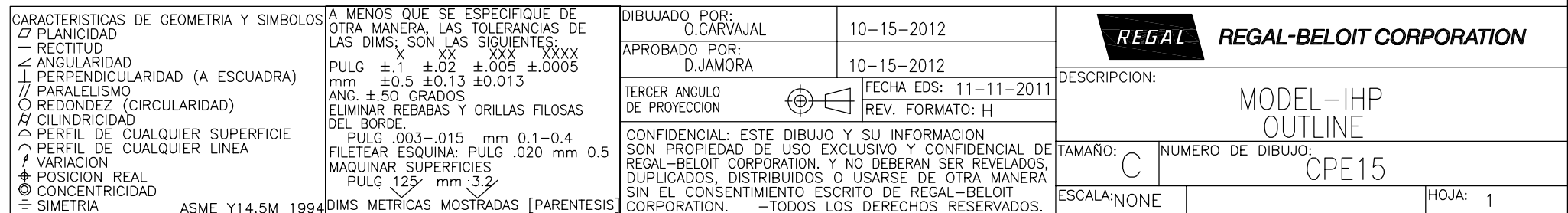
|                       |            |                   |                 |
|-----------------------|------------|-------------------|-----------------|
| Electrical Type       | POLYPHASE  | Starting Method   | Across The Line |
| Poles                 | 4          | Rotation          | Reversible      |
| Mounting              | Rigid Base | Drive End Bearing | Ball            |
| Opp Drive End Bearing | Ball       | Frame Material    | Cast Iron       |
| Shaft Type            | Keyed      | Overall Length    | 19.70 in        |
| Frame Length          | 6.75 in    | Shaft Diameter    | 1.156 in        |
| Shaft Extension       | 7.31 in    |                   |                 |
| Connection Drawing    | A-EE7308   | Outline Drawing   | CPE15-S01       |

This is an uncontrolled document once printed or downloaded and is subject to change without notice. Date Created:05/15/2023

---

1

|  |  |  |   |                                     |   |   |        |         |
|--|--|--|---|-------------------------------------|---|---|--------|---------|
| GEOMETRIC CHARACTERISTICS & SYMBOLS<br>▮ FLATNESS<br>≡ STRAIGHTNESS<br>∠ ANGULARITY<br>⊥ PERPENDICULARITY (SQUARENESS)<br>// PARALLELISM<br>○ ROUNDNESS (CIRCULARITY)<br>∅ CYLINDRICITY<br>▽ PROFILE OF ANY SURFACE<br>( ) PROFILE OF ANY LINE<br>↗ RUNOUT<br>⊕ TRUE POSITION<br>⊗ CONCENTRICITY<br>= SYMMETRY | UNLESS OTHERWISE SPECIFIED<br>DIM. TOLERANCES ARE AS FOLLOWS:<br>X XX XXX XXXX<br>INCH ±.1 ±.02 ±.005 ±.0005<br>mm ±0.5 ±0.13 ±0.13<br>ANG. ±.50 DEG<br>REMOVE BURRS & BREAK SHARP EDGES:<br>INCH .003-.015 mm 0.1-0.4<br>CORNER FILLETS TO:<br>INCH .020 mm 0.5<br>MACHINE SURFACES:<br>INCH 125 mm 3.2 | DR BY:   | O.CARVAJAL  | 10-15-2012                          |  <b>REGAL-BELOIT CORPORATION</b> | DESCRIPTION<br><br>MODEL-IHP<br>OUTLINE |        |         |
|  |  | APPD:  | D.JAMORA  | 10-15-2012                          |   |   |        |         |
|  |  | THIRD ANGLE PROJECTION   |  | EDS DATE 11-11-2011<br>FORMAT REV H | SIZE  | C                                       | DWG NO | CPE15   |
|  |  | CONFIDENTIAL: THIS DRAWING AND ITS INFORMATION ARE THE EXCLUSIVE AND CONFIDENTIAL PROPERTY OF REGAL-BELOIT CORPORATION AND ARE NOT TO BE DISCLOSED, DUPLICATED, DISTRIBUTED OR OTHERWISE USED WITHOUT THE WRITTEN CONSENT OF REGAL-BELOIT CORPORATION. -ALL RIGHTS RESERVED. |   |                                     | SCALE   | NONE                                    |        | SHEET 1 |





| NO.  | REVISION                                       | BY & DATE      | CHK | ANG   | TOLERANCES<br>UNLESS SPECIFIED |                 | DRAWN RM | 11/20/1990               |
|--|--|----------------|-----|-------|--------------------------------|-----------------|----------|--------------------------|
|  |  |                |     |       | DEC.                           | INCHES          |          |                          |
| 5  | CHG TO REGAL LOGO                              | SL 09/10/2015  | AB  |       |                                |                 | CHK      | ML 11/21/1990            |
| 4  | REVISED IEC NOTATIONS                          | MSG 11/15/2011 | CMN | .X    | ±.1                            |                 | APPD     | SAS 04/24/2003           |
| 3  | ADDED IEC NOTATIONS... (U1), (V1) ETC. MU95194 | MSG 5/10/2010  | MJS | .XX   | ±.02                           |                 | SCALE    | 1=1                      |
| 2  | ADDED THE OPTIONAL CORD CONNECTION MU46318     | RDH 04/24/2003 | DRS | .XXX  | ±.005                          |                 | REF      |                          |
| 1  | REDRAWN  | RM 11/20/1990  |     | .XXXX | ±.0005                         |                 | FMF      |                          |
|  |  |                |     |       | ±7'30"                         |                 | PREV     |                          |
| THIS DRAWING IN DESIGN AND DETAIL IS OUR PROPERTY AND MUST NOT BE USED EXCEPT IN CONNECTION WITH OUR WORK ALL RIGHTS OF DESIGN AND INVENTION ARE RESERVED THIS IS AN ELECTRONICALLY GENERATED DOCUMENT - DO NOT SCALE THIS PRINT |  |                |     |       | RFP                            | CAD FILE ee7308 | SIZE     | DRAWING NO. PAGE OF REV. |
|  |  |                |     |       | DIST WP                        |                 | A        | EE7308 5                 |