

PRODUCT INFORMATION PACKET



Model No: CFR36

Catalog No: CFR36

50 HP General Purpose Motor, 3 phase, 1200 RPM, 208-230/460 V, 365TC Frame, TEFC
General Purpose Motors



Regal and Century are trademarks of Regal Rexnord Corporation or one of its affiliated companies.
©2021 Regal Rexnord Corporation, All Rights Reserved. MC017097E





Nameplate Specifications

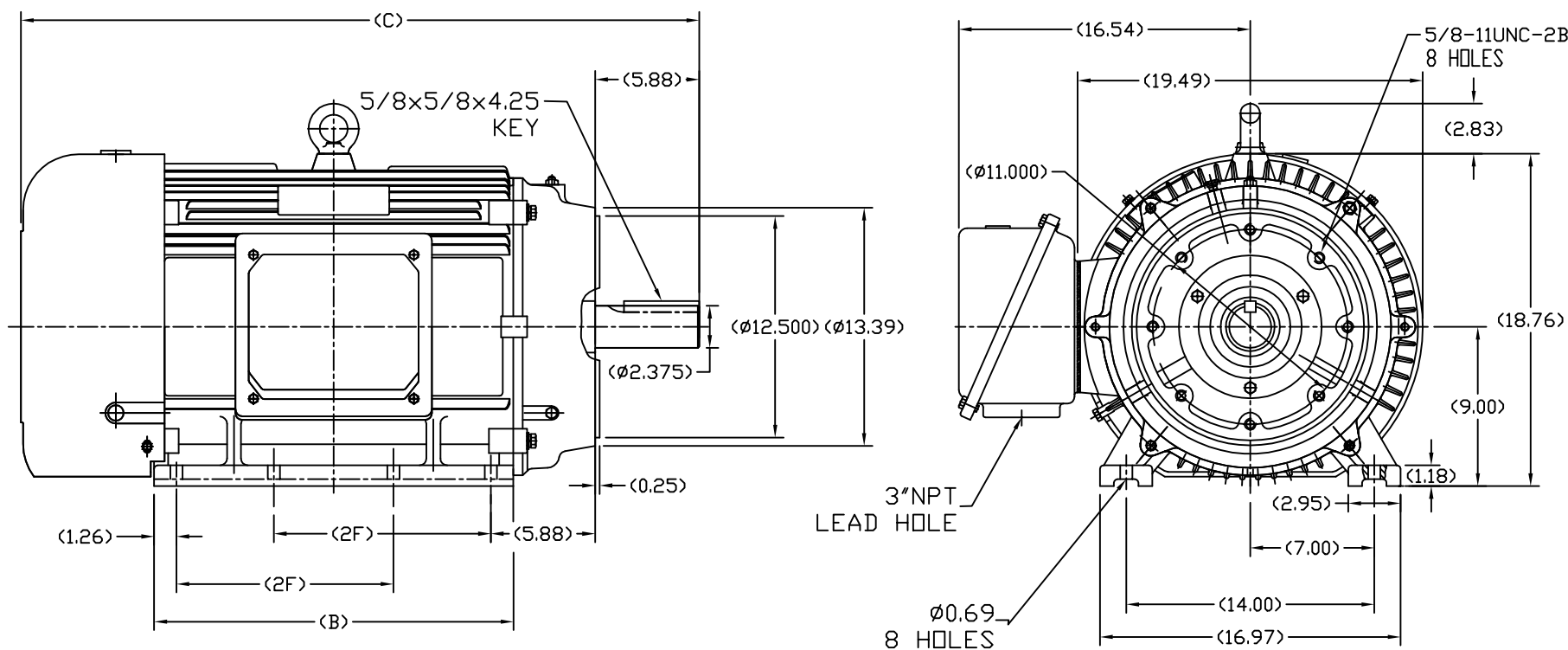
Output HP	50 Hp	Output KW	37.3 kW
Frequency	60 Hz	Voltage	208-230/460 V
Current	59.5 A	Speed	1188 rpm
Service Factor	1.15	Phase	3
Duty	Continuous	Insulation Class	F
Frame	365TC	Enclosure	Totally Enclosed Fan Cooled
Thermal Protection	None	Ambient Temperature	40 °C
UL	Recognized	CSA	Y
CE	Y	Number of Speeds	1

Technical Specifications

Electrical Type	POLYPHASE	Starting Method	Across The Line
Poles	6	Rotation	Reversible
Mounting	Rigid Base	Drive End Bearing	Ball
Opp Drive End Bearing	Ball	Frame Material	Cast Iron
Shaft Type	Keyed	Overall Length	38.39 in
Frame Length	20.27 in	Shaft Diameter	2.375 in
Shaft Extension	5.88 in		
Connection Drawing	A-EE7308AA	Outline Drawing	SS620305

This is an uncontrolled document once printed or downloaded and is subject to change without notice. Date Created:10/07/2021

SS620305



364TC	36.61	18.50	11.25
365TC	38.39	20.28	12.25
FRAME	C	B	2F

TOLERANCES UNLESS SPECIFIED				REGAL-BELOIT CORPORATION		DRAWN SY 4-21-2010	
DEC.	INCHES			CHK	HZJ	4-21-2010	
.X	±.1			APPD	CL	4-21-2010	
.XX	±.03			SCALE	1=6		
.XXX	±.005			REF			
.XXXX	±.0005			FHF	HWADA		
ND.	REVISION	BY & DATE	CHK	ANG	±1/2	FINISH	PREV
THIS DRAWING IN DESIGN AND DETAIL IS OUR PROPERTY AND MUST NOT BE USED EXCEPT IN CONNECTION WITH OUR WORK. ALL RIGHTS OF DESIGN AND INVENTION ARE RESERVED. THIS IS AN ELECTRONICALLY GENERATED DOCUMENT - DO NOT SCALE THIS PRINT.				RFP	CAD FILE	SS620305	SIZE
				DIST			DRAWING NO.
							B
							SS620305
							REV.



LOW VOLTAGE




HIGH VOLTAGE



VIEW OF TERMINAL END

DRAWING REVISION K	REVISION BY AJW	DATE 07-17-2015
ECO ECO-0081632	APPROVED BY T. VUE	DATE 07-17-2015
ECO DESCRIPTION REV'D IEC MARKINGS PER IEC 60034-8		
COPYRIGHT REGAL BELOIT AMERICA, INC. ALL RIGHTS RESERVED. PROPRIETARY AND CONFIDENTIAL INFORMATION - THIS DOCUMENT IS THE PROPERTY OF REGAL BELOIT AMERICA, INC. ("OWNER") AND CONTAINS OWNER'S PROPRIETARY INFORMATION. ANY PERSON, CORPORATION OR OTHER FIRM RECEIVING IT IS DEEMED, BY RECEIVING IT, TO AGREE THAT IT, AND/OR ANY PART OF IT, SHALL NOT BE DISCLOSED TO ANY PERSON, CORPORATION OR OTHER ENTITY, DUPLICATED, AND/OR USED, EXCEPT AS EXPRESSLY APPROVED IN WRITING IN ADVANCE BY OWNER. THIS DOCUMENT SHALL BE RETURNED TO OWNER UPON REQUEST. IT MAY BE SUBJECT TO CERTAIN RESTRICTIONS UNDER APPLICABLE EXPORT CONTROL LAWS AND REGULATIONS.		

DRAWN BY LZ	
DATE 01-12-1994	
APPROVED BY GK	
DATE 01-14-1994	
REFERENCE	
THIRD ANGLE PROJECTION	

 Regal Beloit America, Inc.		
DESCRIPTION CONN DIAGRAM-EXTERNAL 3Ø-2/1 DELTA-12 LEADS		
MATERIAL	PROCESS/FINISH	
SIZE A	DRAWING NUMBER EE7308AA	SHEET 1 OF 1