

# PRODUCT INFORMATION PACKET



Model No: CFR22

Catalog No: CFR22

15 HP General Purpose Motor, 3 phase, 1800 RPM, 208-230/460 V, 254TC Frame, TEFC  
General Purpose Motors



Regal and Century are trademarks of Regal Rexnord Corporation or one of its affiliated companies.  
©2021 Regal Rexnord Corporation, All Rights Reserved. MC017097E





### Nameplate Specifications

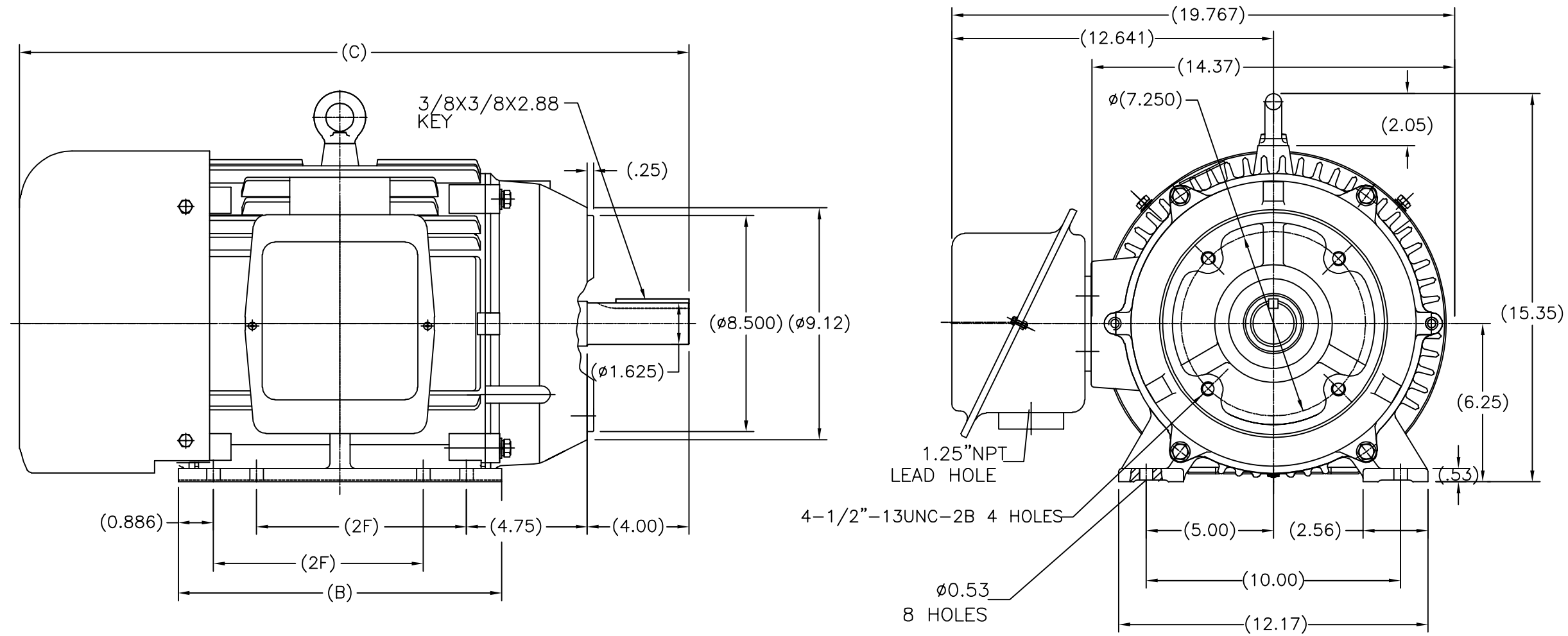
Output HP	15 Hp	Output KW	11.2 kW
Frequency	60 Hz	Voltage	208-230/460 V
Current	37/18.5 A	Speed	1770 rpm
Service Factor	1.15	Phase	3
Duty	Continuous	Insulation Class	F
Frame	254TC	Enclosure	Totally Enclosed Fan Cooled
Thermal Protection	None	Ambient Temperature	40 °C
UL	Recognized	CSA	Y
CE	Y	Number of Speeds	1

### Technical Specifications


Electrical Type	POLYPHASE	Starting Method	Across The Line
Poles	4	Rotation	Reversible
Mounting	Rigid Base	Drive End Bearing	Ball
Opp Drive End Bearing	Ball	Frame Material	Cast Iron
Shaft Type	Keyed	Overall Length	26.60 in
Frame Length	11.41 in	Shaft Diameter	1.625 in
Shaft Extension	4.00 in		
Connection Drawing	A-EE7308K	Outline Drawing	SS620298

This is an uncontrolled document once printed or downloaded and is subject to change without notice. Date Created:10/12/2021

SS620298

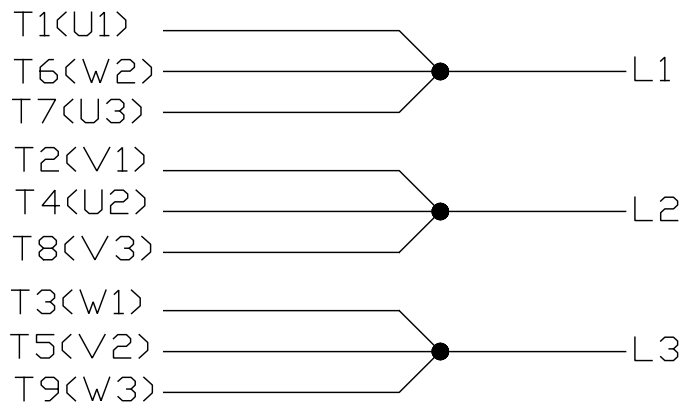


254	26.60	12.717	8.25
256	27.80	13.898	10.00
FRAME	C	B	2F

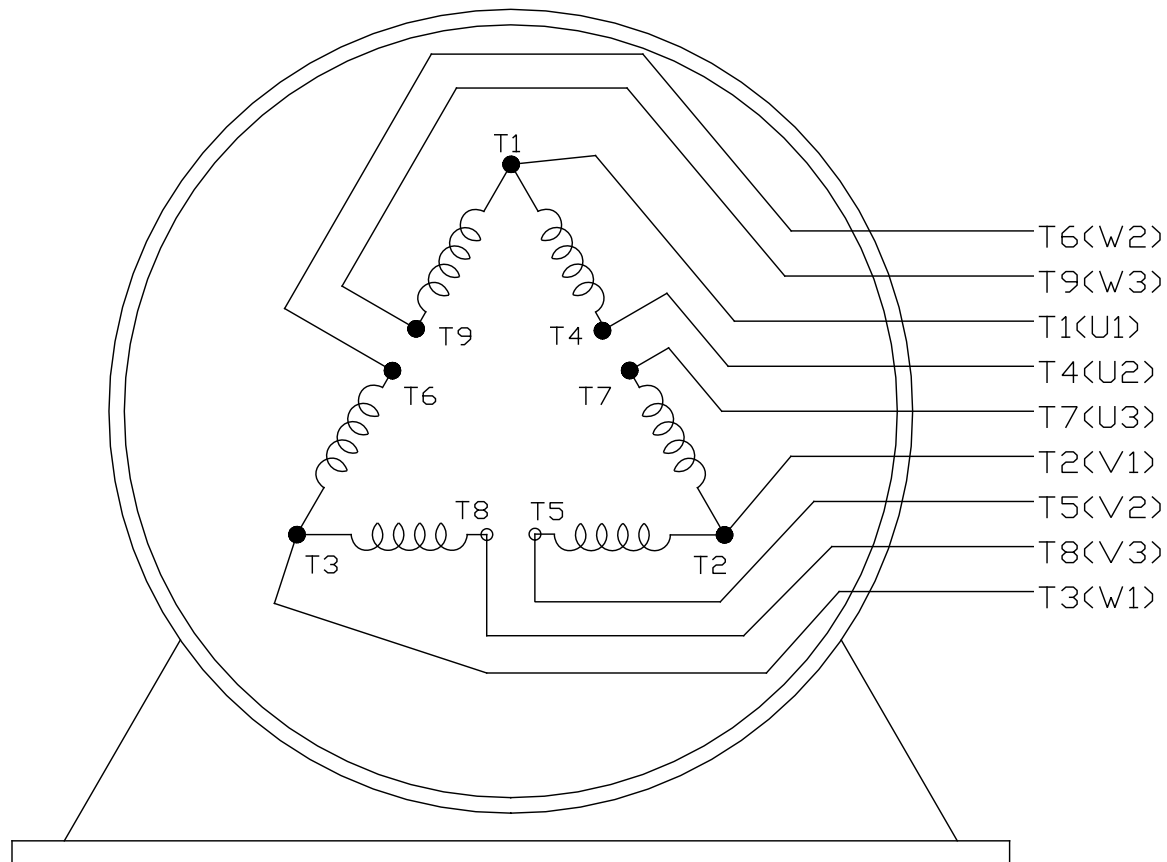
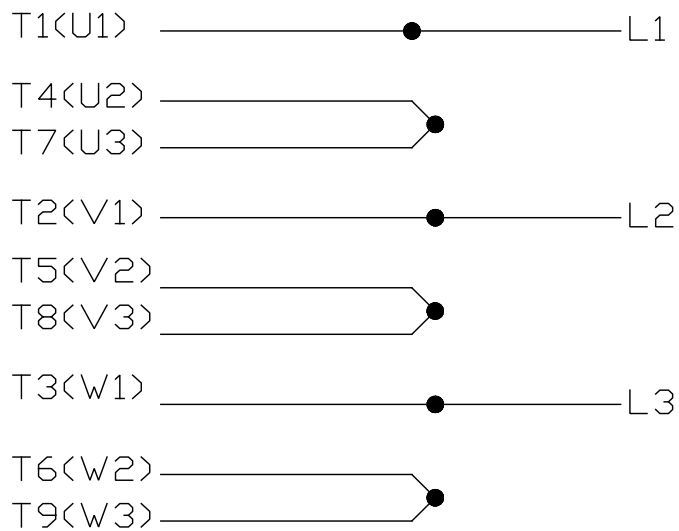
					TOLERANCES UNLESS SPECIFIED			REGAL-BELOIT CORPORATION		DRAWN ZYH 04-22-2012
					DEC.	INCHES		CHK HZJ 04-22-2012		
					.X	±.1		APPD WGH 04-22-2012		
					.XX	±.03		SCALE 1=4		
					.XXX	±.005	TITLE OUTLINE 254/256TC FR-TEFC-CAST IRON		REF	
D	UPDATED DWG SENT FROM CHINA ECO-0074012		WGJ 5-6-2015	EMH .XXXX	±.0005	MAT'L.		FMF HWADA		
NO.	REVISION		BY & DATE	CHK ANG	±1/2	FINISH		PREV		
THIS DRAWING IN DESIGN AND DETAIL IS OUR PROPERTY AND MUST NOT BE USED EXCEPT IN CONNECTION WITH OUR WORK ALL RIGHTS OF DESIGN AND INVENTION ARE RESERVED THIS IS AN ELECTRONICALLY GENERATED DOCUMENT - DO NOT SCALE THIS PRINT				RFP		CAD FILE SS620298		SIZE B	DRAWING NO. SS620298	REV. D
				DIST						

LOW VOLTAGE


EE7308K



## HIGH VOLTAGE



VIEW OF TERMINAL END

				TOLERANCES UNLESS SPECIFIED		 <b>REGAL - BELOIT CORPORATION</b>		DRAWN PGK 06-04-1997		
E	CORRECTED IEC MARKINGS ECD-0111208	WGJ 01-23-2017	EMH	DEC.	INCHES			CHK	ML 06-05-1997	
D	RE-DRAWN WITH REGAL LOGO ECD-0110493	WGJ 09-30-2016	EMH	.X	±.1	TITLE CONNECTION DIAGRAM DELTA CON. - 3Ø - 9 LEADS		APPD	GK 06-15-1997	
8	ADDED IEC DESIGNATIONS MU95020	TJW 4/30/2010	MJS	.XX	±.02			SCALE		
7	REVISD HIGH VOLTAGE L2 WAS L3 CN52600-354	MRB 09-21-1998		.XXX	±.005	MAT'L.		REF		
6	REDRAWN ON CADD	PGK 06-05-1997		.XXXX	±.0005			FMF		
NO.	REVISION	BY & DATE	CHK	ANG	± 7'30"	FINISH		PREV		
THIS DRAWING IN DESIGN AND DETAIL IS OUR PROPERTY AND MUST NOT BE USED EXCEPT IN CONNECTION WITH OUR WORK ALL RIGHTS OF DESIGN AND INVENTION ARE RESERVED THIS IS AN ELECTRONICALLY GENERATED DOCUMENT - DO NOT SCALE THIS PRINT			RFP		CAD FILE EE7308K		SIZE A	DRAWING NO. EE7308K	PAGE OF REV. E	
			DIST							