

PRODUCT INFORMATION PACKET



Model No: CFR18

Catalog No: CFR18

10 HP General Purpose Motor, 3 phase, 1200 RPM, 208-230/460 V, 256TC Frame, TEFC
General Purpose Motors



Regal and Century are trademarks of Regal Rexnord Corporation or one of its affiliated companies.
©2021 Regal Rexnord Corporation, All Rights Reserved. MC017097E





Nameplate Specifications

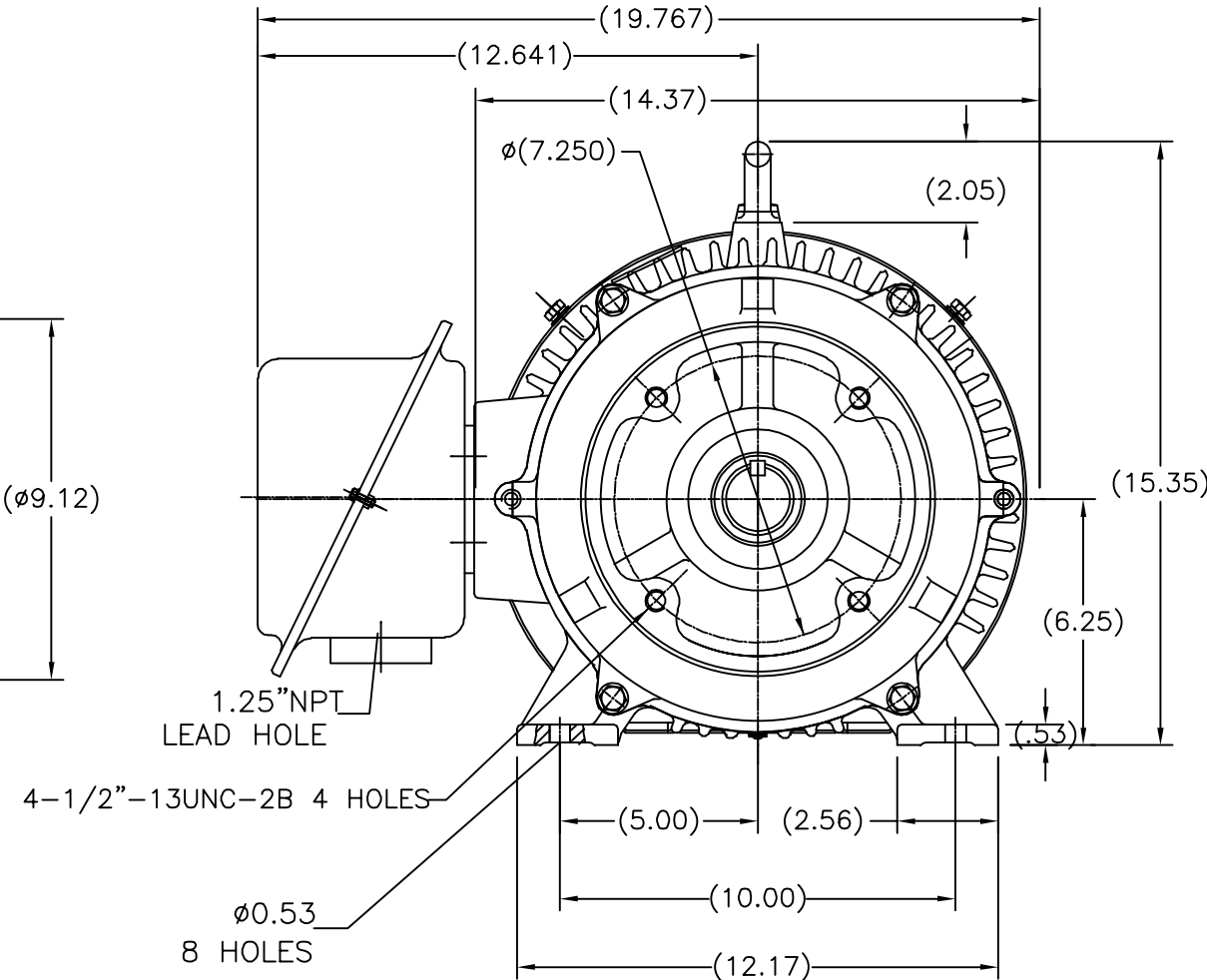
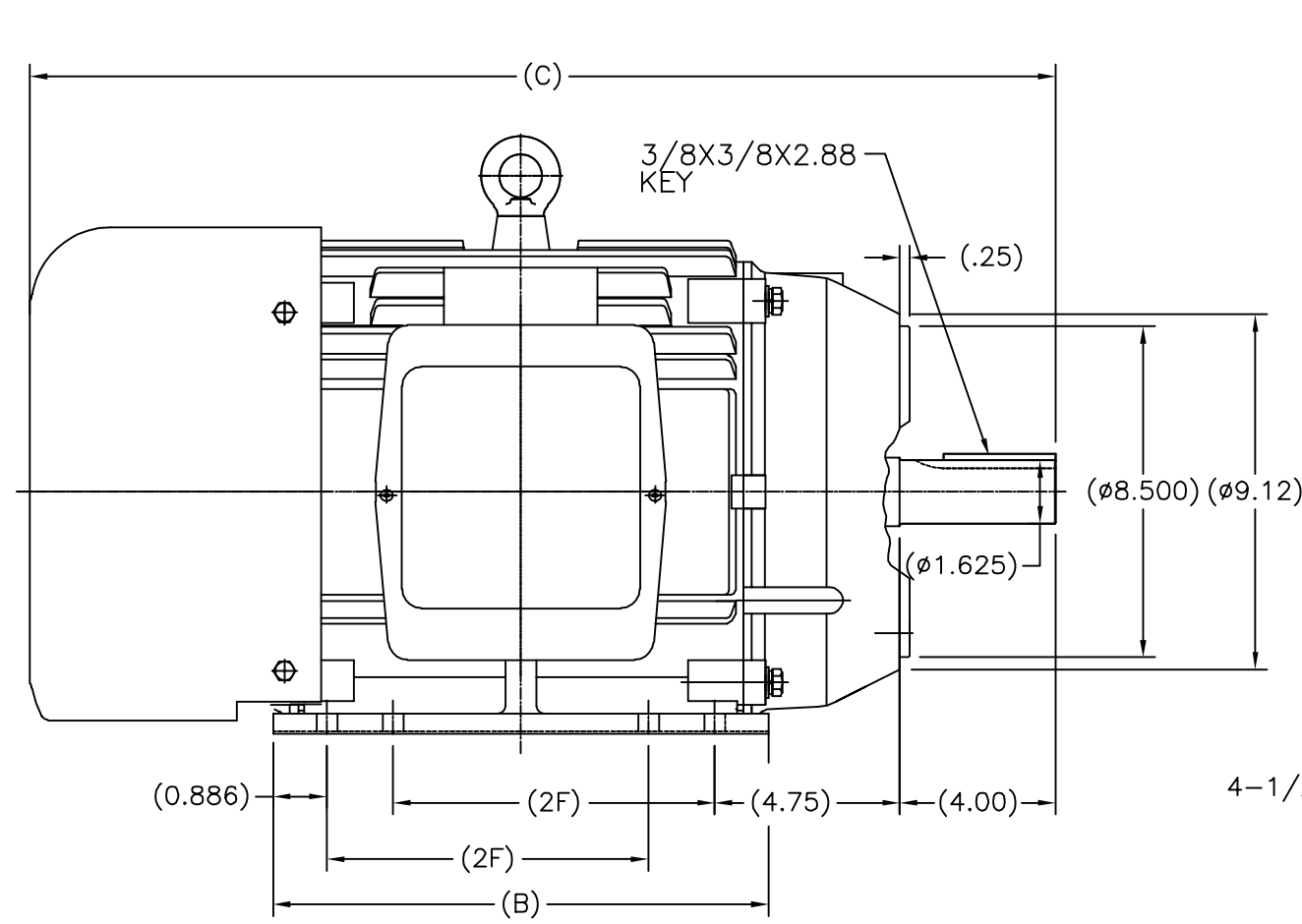
Output HP	10 Hp	Output KW	7.5 kW
Frequency	60 Hz	Voltage	208-230/460 V
Current	28/14 A	Speed	1180 rpm
Service Factor	1.15	Phase	3
Duty	Continuous	Insulation Class	F
Frame	256TC	Enclosure	Totally Enclosed Fan Cooled
Thermal Protection	None	Ambient Temperature	40 °C
UL	Recognized	CSA	Y
CE	Y	Number of Speeds	1

Technical Specifications


Electrical Type	POLYPHASE	Starting Method	Across The Line
Poles	6	Rotation	Reversible
Mounting	Rigid Base	Drive End Bearing	Ball
Opp Drive End Bearing	Ball	Frame Material	Cast Iron
Shaft Type	Keyed	Overall Length	27.80 in
Frame Length	12.59 in	Shaft Diameter	1.625 in
Shaft Extension	4.00 in		
Connection Drawing	A-EE7308K	Outline Drawing	SS620298

This is an uncontrolled document once printed or downloaded and is subject to change without notice. Date Created:10/12/2021

SS620298



254	26.60	12.717	8.25
256	27.80	13.898	10.00
FRAME	C	B	2F

				TOLERANCES UNLESS SPECIFIED			DRAWN ZYH 04-22-2012			
				DEC.	INCHES		CHK HZJ 04-22-2012			
				.X	±.1		APPD WGH 04-22-2012			
				.XX	±.03		SCALE 1=4			
				.XXX	±.005	TITLE OUTLINE		REF		
D	UPDATED DWG SENT FROM CHINA ECO-0074012		WGJ 5-6-2015	EMH .XXXX	±.0005	254/256TC FR-TEFC-CAST IRON		FMF HWADA		
NO.	REVISION		BY & DATE	CHK ANG	±1/2	FINISH		PREV		
THIS DRAWING IN DESIGN AND DETAIL IS OUR PROPERTY AND MUST NOT BE USED EXCEPT IN CONNECTION WITH OUR WORK ALL RIGHTS OF DESIGN AND INVENTION ARE RESERVED THIS IS AN ELECTRONICALLY GENERATED DOCUMENT - DO NOT SCALE THIS PRINT				RFP		CAD FILE SS620298		SIZE B	DRAWING NO. SS620298	REV. D
				DIST						

LOW VOLTAGE

EE7308K

HIGH VOLTAGE

VIEW OF TERMINAL END

			TOLERANCES UNLESS SPECIFIED			 REGAL - BELOIT CORPORATION	DRAWN PGK 06-04-1997		
NO.	REVISION	BY & DATE	CHK	ANG	± 7'30"		CHK	ML	06-05-1997
E	CORRECTED IEC MARKINGS ECD-0111208	WGJ 01-23-2017	EMH	DEC.	INCHES				
D	RE-DRAWN WITH REGAL LOGO ECD-0110493	WGJ 09-30-2016	EMH	.X	± .1				
8	ADDED IEC DESIGNATIONS MU95020	TJW 4/30/2010	MJS	.XX	± .02	TITLE			
7	REVISED HIGH VOLTAGE L2 WAS L3 CN52600-354	MRB 09-21-1998		.XXX	± .005	CONNECTION DIAGRAM			
6	REDRAWN ON CADD	PGK 06-05-1997		.XXXX	± .0005	DELTA CON. - 3Ø - 9 LEADS			
						MAT'L.			
						FINISH			
THIS DRAWING IN DESIGN AND DETAIL IS OUR PROPERTY AND MUST NOT BE USED EXCEPT IN CONNECTION WITH OUR WORK ALL RIGHTS OF DESIGN AND INVENTION ARE RESERVED THIS IS AN ELECTRONICALLY GENERATED DOCUMENT - DO NOT SCALE THIS PRINT						CAD FILE EE7308K	SIZE	DRAWING NO.	PAGE OF
							A	EE7308K	REV.
									E