

# PRODUCT INFORMATION PACKET



Model No: CFR06

Catalog No: CFR06

2 HP General Purpose Motor, 3 phase, 1200 RPM, 208-230/460 V, 184TC Frame, TEFC  
General Purpose Motors



Regal and Century are trademarks of Regal Rexnord Corporation or one of its affiliated companies.  
©2021 Regal Rexnord Corporation, All Rights Reserved. MC017097E





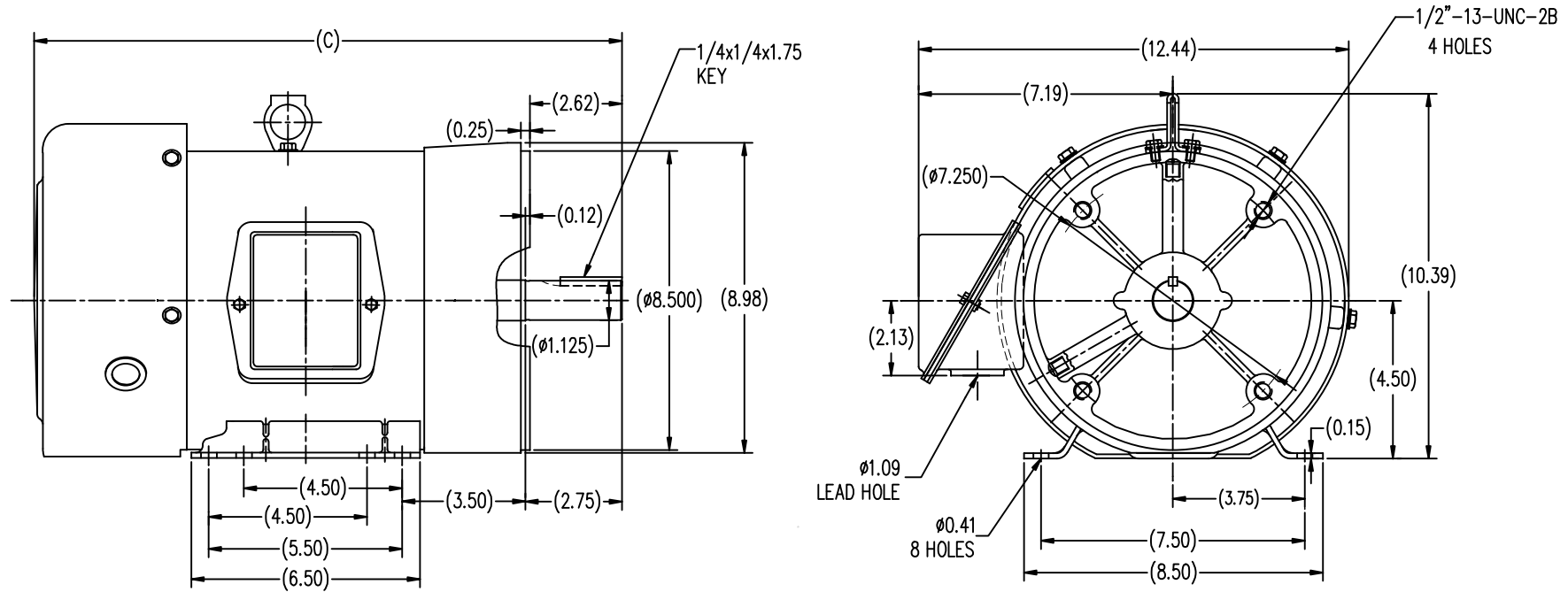
### Nameplate Specifications

Output HP	2 Hp	Output KW	1.5 kW
Frequency	60 Hz	Voltage	208-230/460 V
Current	6/3 A	Speed	1182 rpm
Service Factor	1.15	Phase	3
Duty	Continuous	Insulation Class	F
Frame	184TC	Enclosure	Totally Enclosed Fan Cooled
Thermal Protection	None	Ambient Temperature	40 °C
UL	Recognized	CSA	Y
CE	Y	Number of Speeds	1

### Technical Specifications

Electrical Type	POLYPHASE	Starting Method	Across The Line
Poles	6	Rotation	Reversible
Mounting	Rigid Base	Drive End Bearing	Ball
Opp Drive End Bearing	Ball	Frame Material	Rolled Steel
Shaft Type	Keyed	Overall Length	16.73 in
Frame Length	6.73 in	Shaft Diameter	1.125 in
Shaft Extension	2.75 in		
Connection Drawing	A-EE7308	Outline Drawing	SS620296

This is an uncontrolled document once printed or downloaded and is subject to change without notice. Date Created:10/12/2021



TTFB 182TC	15.75
TTFB 184TC	16.73
FRAME	C

TOLERANCES UNLESS SPECIFIED		DRAWN		SY 4-19-2010	
DEC.	INCHES	CHK	ZYH	4-19-2010	
.X	±.1	APPD	CL	4-19-2010	
.XX	±.03	SCALE	1=4		
.XXX	±.005	REF			
.XXXX	±.0005	FMF	HWADA		
NO.	REVISION	BY & DATE	CHK	ANG	±1/2
THIS DRAWING IN DESIGN AND DETAIL IS OUR PROPERTY AND MUST NOT BE USED EXCEPT IN CONNECTION WITH OUR WORK ALL RIGHTS OF DESIGN AND INVENTION ARE RESERVED THIS IS AN ELECTRONICALLY GENERATED DOCUMENT - DO NOT SCALE THIS PRINT					
RFP	ANG	±1/2	FINISH	CAD FILE	SS620296
DIST				SIZE	B
				DRAWING NO.	SS620296
				REV.	



NO.	REVISION	BY & DATE	CHK	ANG	TOLERANCES UNLESS SPECIFIED	FINISH	SIZE	DRAWING NO.	PAGE	OF	REV.
5	CHG TO REGAL LOGO	SL 09/10/2015	AB	DEC.	INCHES						
4	REVISED IEC NOTATIONS	MSG 11/15/2011	CMN	.X	±.1						
3	ADDED IEC NOTATIONS... (U1), (V1) ETC. MU95194	MSG 5/10/2010	MJS	.XX	±.02						
2	ADDED THE OPTIONAL CORD CONNECTION MU46318	RDH 04/24/2003	DRS	.XXX	±.005						
1	REDRAWN	RM 11/20/1990		.XXXX	±.0005						
					±7'30"						
THIS DRAWING IN DESIGN AND DETAIL IS OUR PROPERTY AND MUST NOT BE USED EXCEPT IN CONNECTION WITH OUR WORK ALL RIGHTS OF DESIGN AND INVENTION ARE RESERVED THIS IS AN ELECTRONICALLY GENERATED DOCUMENT - DO NOT SCALE THIS PRINT						RFP	CAD FILE ee7308				
						DIST WP		A	EE7308		5



Regal Beloit America, Inc.

DRAWN RM 11/20/1990

CHK ML 11/21/1990

APPD SAS 04/24/2003

SCALE 1=1

REF

FMF

PREV

TITLE CONNECTION DIAGRAM  
3Ø - DUAL VOLTAGE MOTOR

MAT'L.