

PRODUCT INFORMATION PACKET



Model No: B199012.00

Catalog No: B199012.00

Ultimate e™ General Purpose Motor, 10 & 7.5 HP, 3 Ph, 60 & 50 Hz, 230/460 & 190/380 V,
3600 & 3000 RPM, 215T Frame, TEFC



Regal and Leeson are trademarks of Regal Rexnord Corporation or one of its affiliated companies.

©2023 Regal Rexnord Corporation, All Rights Reserved. MC017097E





Nameplate Specifications

| | | | |
|------------------------|-------------------------|----------------------------|-----------------------------|
| Phase | 3 | Output HP | 10 & 7.5 Hp |
| Output KW | 7.5 & 5.6 kW | Voltage | 230/460 & 190/380 V |
| Speed | 3518 & 2925 rpm | Service Factor | 1.15 & 1.15 |
| Frame | 215T | Enclosure | Totally Enclosed Fan Cooled |
| Thermal Protection | No Protection | Efficiency | 90.2 & 89.5 % |
| Ambient Temperature | 40 °C | Frequency | 60 & 50 Hz |
| Current | 23.6/11.8 & 21.6/10.8 A | Power Factor | 89 |
| Duty | Continuous | Insulation Class | F |
| Design Code | B | KVA Code | H |
| Drive End Bearing Size | 6307 | Opp Drive End Bearing Size | 6206 |
| UL | Recognized | CSA | Y |
| CE | N | IP Code | 43 |
| Number of Speeds | 1 | | |

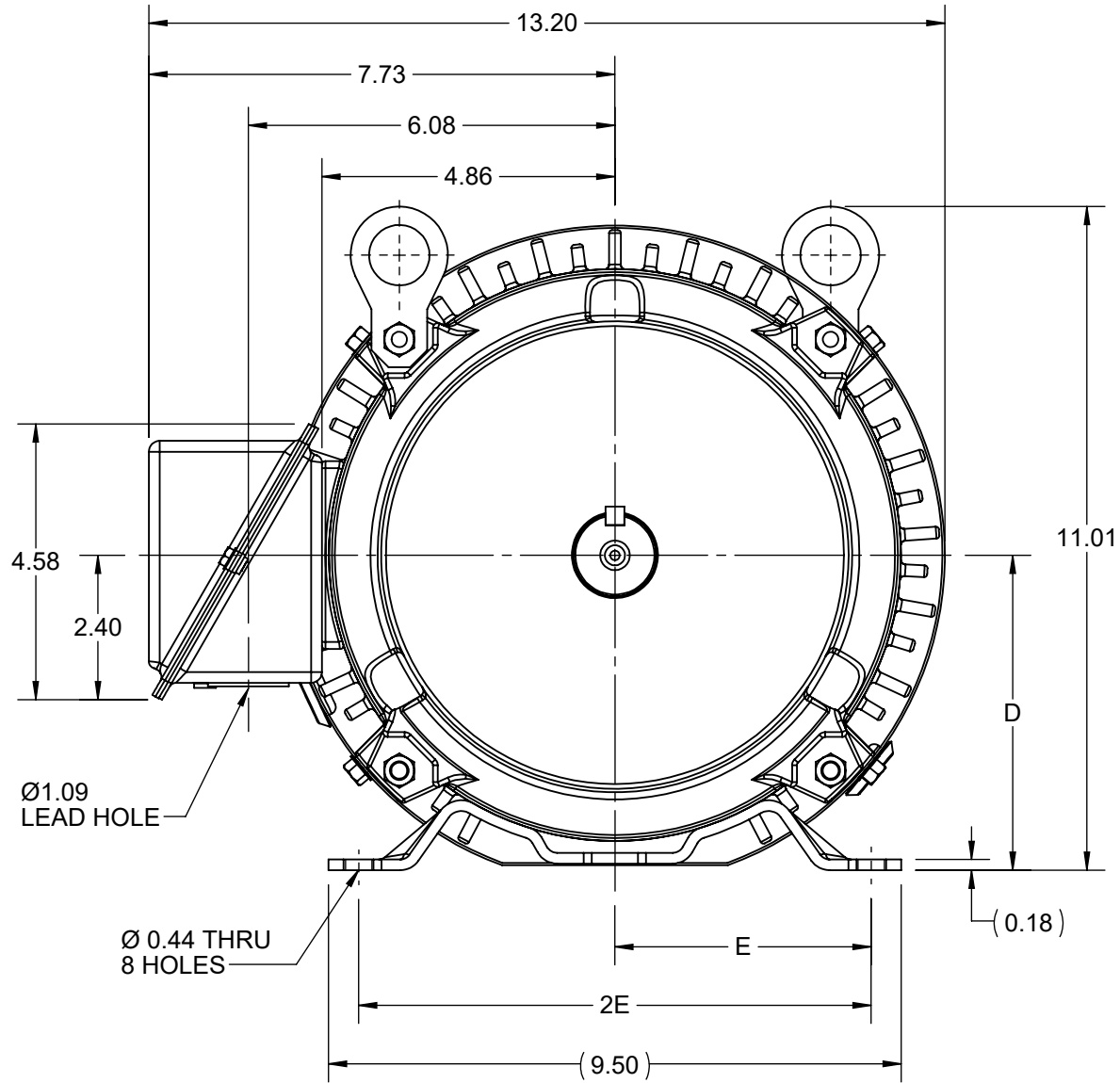
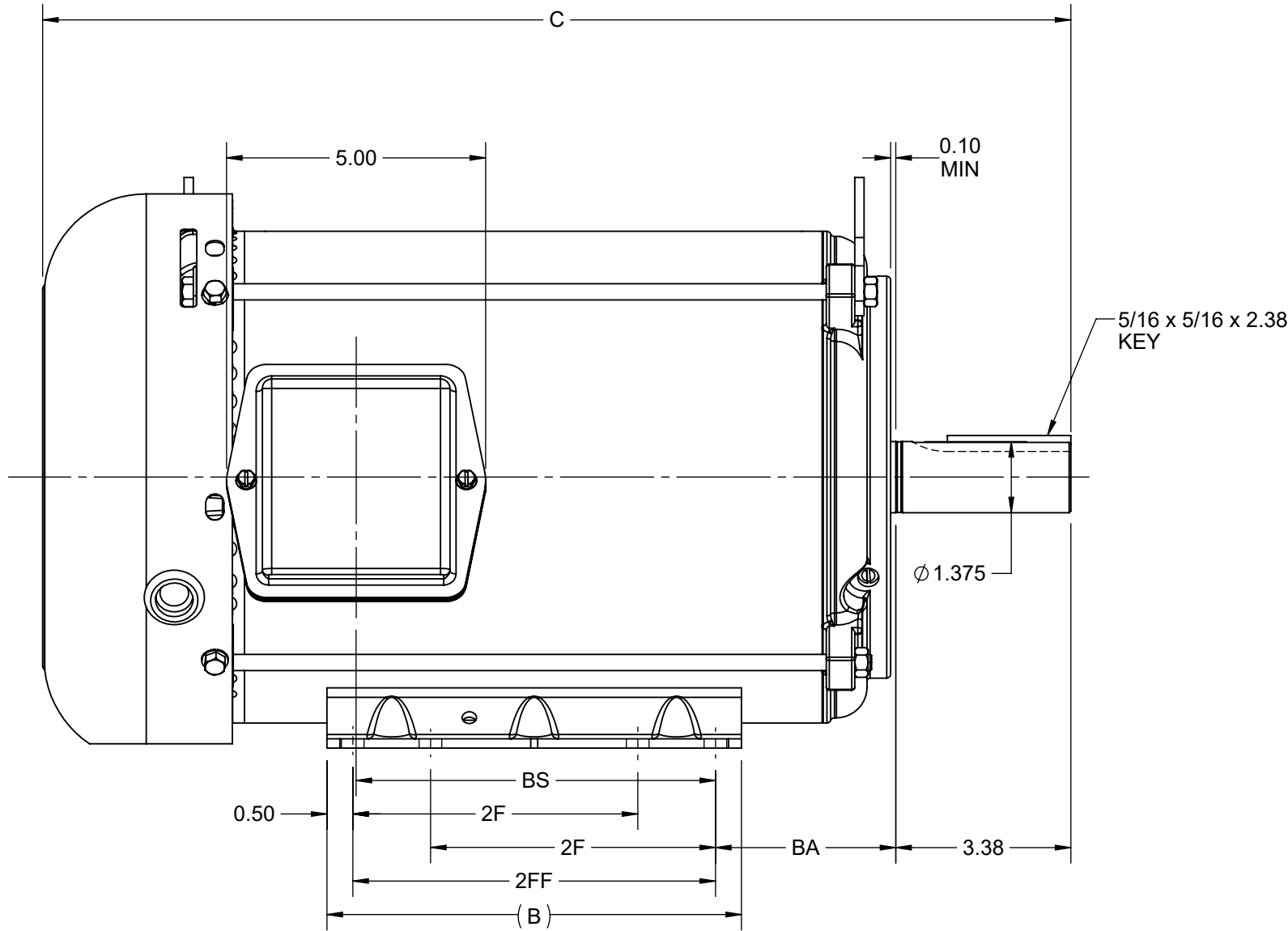
Technical Specifications

| | | | |
|-----------------------|------------------------------|-----------------------|------------------|
| Electrical Type | Squirrel Cage Inverter Rated | Starting Method | Line Or Inverter |
| Poles | 2 | Rotation | Reversible |
| Resistance Main | 1.218 Ohms | Mounting | Rigid Base |
| Motor Orientation | Horizontal | Drive End Bearing | Ball |
| Opp Drive End Bearing | Ball | Frame Material | Rolled Steel |
| Shaft Type | T | Overall Length | 19.95 in |
| Frame Length | 11.15 in | Shaft Diameter | 1.375 in |
| Shaft Extension | 3.38 in | Assembly/Box Mounting | F1/F2 CAPABLE |
| Outline Drawing | SS620737-215T | Connection Drawing | EE7308 |

| 4 | | | | 3 | | | | 2 | | | 1 |
|----------|------|-------|------|------|------|------|------|------|------|----------|-------|
| DASH NO. | B | C | D | E | 2E | 2F | 2FF | BA | BS | MOUNTING | FRAME |
| 100 | 8.00 | 18.34 | 5.25 | 4.25 | 8.50 | 5.50 | 7.00 | 3.50 | 5.44 | F1 OR F2 | 213T |
| 200 | | 19.84 | | | | | | | 6.94 | | 215T |

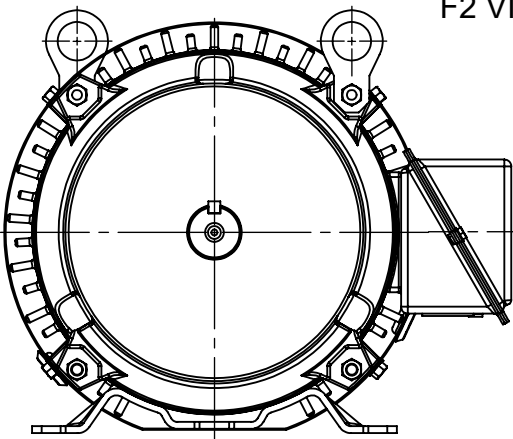
B

B



A


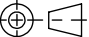
A



F2 VIEW

| | | |
|--|-----------------------|-------------------------------|
| DRAWING REVISION D | REVISION BY GOPI J | REV DATE/© DATE 09/05/2022 |
| REQUEST NUMBER CR-0008840 | APPROVED BY GNK | DATE 09/05/2022 |
| REQUEST NUMBER DESCRIPTION FRAME AND CONDUIT BOX PART # UPDATED AS PER CR | | |
| COPYRIGHT (PER REVISION DATE) REGAL BELOIT AMERICA, INC. ALL RIGHTS RESERVED. PROPRIETARY AND CONFIDENTIAL INFORMATION - THIS DOCUMENT IS THE PROPERTY OF REGAL BELOIT AMERICA, INC. ("OWNER") AND CONTAINS OWNER'S PROPRIETARY INFORMATION. ANY PERSON, CORPORATION OR OTHER FIRM RECEIVING IT IS DEEMED, BY RECEIVING IT, TO AGREE THAT IT, AND/OR ANY PART OF IT, SHALL NOT BE DISCLOSED TO ANY PERSON, CORPORATION OR OTHER ENTITY, DUPLICATED, AND/OR USED, EXCEPT AS EXPRESSLY APPROVED IN WRITING IN ADVANCE BY OWNER. THIS DOCUMENT SHALL BE RETURNED TO OWNER UPON REQUEST. IT MAY BE SUBJECT TO CERTAIN RESTRICTIONS UNDER APPLICABLE EXPORT CONTROL LAWS AND REGULATIONS. | | |

PRIMARY DIMENSIONS ARE INCH
mm DIMENSIONS IN [BRACKETS]
ARE FOR REFERENCE ONLY

| | | |
|--|--|-----------------------------------|
| DRAWN BY WY |  Regal Beloit America, Inc. | |
| DATE 25-02-2016 | | |
| APPROVED BY ZYH | DESCRIPTION OUTLINE 213/215T FR NEMA TEFC RS | |
| DATE 25-02-2016 | | |
| REFERENCE | MATERIAL | PROCESS/FINISH |
| THIRD ANGLE PROJECTION  | SIZE B | DRAWING NUMBER SS620737 |
| | | SHEET 1 OF 1 |



| | | | | | | | | | |
|--|--|----------------|---------|--------------------------------|-----------------|---|---------------------|---------|-----------|
| | | | | TOLERANCES UNLESS SPECIFIED | |  Regal Beloit America, Inc. | DRAWN RM 11/20/1990 | | |
| 5 | CHG TO REGAL LOGO | SL 09/10/2015 | AB | DEC. | INCHES | | CHK ML 11/21/1990 | | |
| 4 | REVISED IEC NOTATIONS | MSG 11/15/2011 | CMN | .X | ±.1 | | APPD SAS 04/24/2003 | | |
| 3 | ADDED IEC NOTATIONS... (U1), (V1) ETC. MU95194 | MSG 5/10/2010 | MJS | .XX | ±.02 | | SCALE 1=1 | | |
| 2 | ADDED THE OPTIONAL CORD CONNECTION MU46318 | RDH 04/24/2003 | DRS | .XXX | ±.005 | TITLE CONNECTION DIAGRAM 3ø – DUAL VOLTAGE MOTOR | REF | | |
| 1 | REDRAWN | RM 11/20/1990 | | .XXXX | ±.0005 | MAT'L. | FMF | | |
| NO. | REVISION | BY & DATE | CHK | ANG | ±7"30" | FINISH | PREV | | |
| THIS DRAWING IN DESIGN AND DETAIL IS OUR PROPERTY AND MUST NOT BE USED EXCEPT IN CONNECTION WITH OUR WORK ALL RIGHTS OF DESIGN AND INVENTION ARE RESERVED THIS IS AN ELECTRONICALLY GENERATED DOCUMENT – DO NOT SCALE THIS PRINT | | | RFP | | CAD FILE ee7308 | SIZE A | DRAWING NO. EE7308 | PAGE OF | REV. 5 |
| | | | DIST WP | | | | | | |



P.O. BOX 8003
WAUSAU, WI 54401-8003
PH. 715-675-3311

DATA VOLTS: 460

CERTIFICATION DATA SHEET

CONN. DIAGRAM EE7308
OUTLINE: SS620737
WINDING: HE31322010

CAT #: B199012.00

NONE 2

TYPICAL MOTOR PERFORMANCE DATA

| HP | KW | SYNC RPM | FL RPM | FRAME | ENCLOSURE | TYPE | KVA CODE | DESIGN |
|----|-----|----------|--------|-------|-----------|------|----------|--------|
| 10 | 7.5 | 3600 | 3518 | 215T | TEFC | TFC | H | B |

| PH | HZ | VOLTS | AMPS | START TYPE | DUTY | INSL | S.F. | AMB | ELEV. |
|----|-------|-----------------|---------------------|------------------|------|------|------|-----|-------|
| 3 | 60/50 | 230/460#190/380 | 23.6/11.8&21.6/10.8 | LINE OR INVERTER | CONT | F | 1.15 | 40 | 3300 |

| F.L. EFF | 90.2 | 3/4 LD EFF | 90.6 | 1/2 LD EFF | 89.9 | GTD EFF | ELECT. TYPE |
|----------|------|------------|------|------------|------|---------|-------------------|
| F.L. PF | 89.0 | 3/4 LD PF | 86.0 | 1/2 LD PF | 78.5 | 89.5 | SQ CAGE INV RATED |

| F.L. TORQUE | LR AMPS @ 460 V | L.R. TORQUE | B.D. TORQUE | F.L. RISE (°C) |
|-------------|-----------------|-----------------|-----------------|----------------|
| 14.9 LB-FT | 79.0 | 28.0 LB-FT 188% | 41.0 LB-FT 275% | 55 |

| PRESSURE @ | POWER | ROTOR WK ² | MAX. LOAD WK ² | SAFE STALL TIME | STARTS/HOUR | MOTOR WGT |
|------------|--------|-------------------------|---------------------------|-----------------|-------------|-----------|
| 72 dBA | 81 dBA | 0.60 LB-FT ² | 18 LB-FT ² | 15 SEC. | 2 | 190 LB. |

*** SUPPLEMENTAL INFORMATION ***

| DE BRACKET TYPE | ODE BRACKET TYPE | MOUNT TYPE | MOTOR ORIENTATION | SEVERE DUTY | HAZARDOUS LOCATION | DRIP COVER | SCREENS | PAINT |
|-----------------|------------------|------------|-------------------|-------------|--------------------|------------|---------|---------------|
| STANDARD | STANDARD | RIGID | HORIZONTAL | NO | NONE | NO | NONE | BLUE (ENAMEL) |

| BEARINGS | GREASE | SHAFT TYPE | SPECIAL DE | SPECIAL ODE | SHAFT MATERIAL | FRAME MATERIAL |
|-----------|------------|------------|------------|-------------|-------------------|----------------|
| DE ODE | | | | | | |
| BALL BALL | POLYREX EM | T | NONE | NONE | AISI 1045 (C-240) | ROLLED STEEL |
| 6307 6206 | | | | | | |

| THERMOSTATS | PROTECTORS | WDG RTD's | BRG RTD's | THERMISTORS | CONTROL | SPACE HEATERS |
|-------------|------------|-----------|-----------|-------------|---------|---------------|
| NONE | NOT | NONE | NONE | NONE | FALSE | NA |

| R1 (ohms/ph) | R2 (ohms/ph) | X1 (ohms/ph) | X2 (ohms/ph) | Xm (ohms/ph) | VIBRATION (in/sec) | FLOAT |
|--------------|--------------|--------------|--------------|--------------|--------------------|-------|
| 0.792 | 0.534 | 2.119 | 1.468 | 69.296 | 0.150 | ODE |

| | | |
|---------------------------------|--|---|
| * N O T E S * | | INVERTER TORQUE: VARIABLE 10:1 INV. HP SPEED RANGE: NONE |
| | | |
| | | |
| | | ENCODER: NONE NONE NONE NONE PPR |
| | | |
| | | |
| | | |

DATE: 1/31/2018

BRAKE: NONE
 NONE
 NONE
FT-LB: NA
VOLTAGE: NONE
UL: Y-(LEESON UL REC)

Data Sheet

Date: 1/31/2018

B199012.00



Data @ 460 V

Motor Load Data

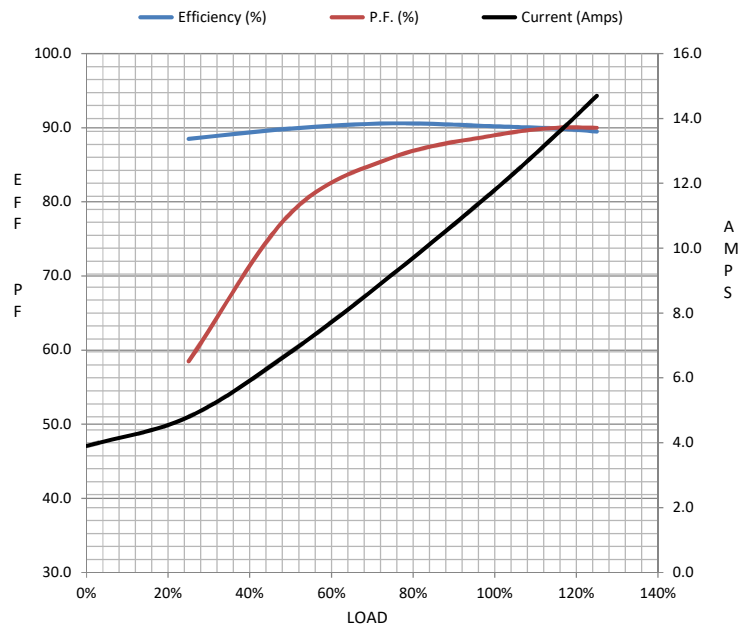
| Load | 0% | 25% | 50% | 75% | 100% | 115% | 125% | LR | |
|----------------|------|------|------|------|------|------|------|------|--|
| Current (Amps) | 3.9 | 4.8 | 6.8 | 9.2 | 11.8 | 13.5 | 14.7 | 79.0 | |
| Torque (ft-lb) | 0.00 | 3.7 | 7.4 | 11.1 | 14.9 | 17.3 | 18.9 | 28.0 | |
| RPM | 3600 | 3580 | 3560 | 3540 | 3518 | 3502 | 3492 | 0 | |
| Efficiency (%) | | 88.5 | 89.9 | 90.6 | 90.2 | 89.9 | 89.5 | | |
| P.F. (%) | 10.5 | 58.5 | 78.5 | 86.0 | 89.0 | 90.0 | 90.0 | 45.0 | |

Motor Speed Data

| | LR | Pull-Up | BD | Rated | Idle |
|----------------|------|---------|------|-------|------|
| Speed (RPM) | 0 | 1800 | 3125 | 3518 | 3600 |
| Current (Amps) | 79.0 | 67.0 | 44.0 | 11.8 | 3.9 |
| Torque (ft-lb) | 28.0 | 24.0 | 41.0 | 14.9 | 0.00 |

Information Block

| | | | | |
|----------------------------|-----------------|--------|--------|---------|
| HP | 10.0 | | | |
| Sync. RPM | 3600 | | | |
| Frame | 215 | | | |
| Enclosure | TEFC | | | |
| Construction | TFC | | | |
| Voltage | 230/460#190/380 | V | | |
| Frequency | 60 | Hz | | |
| Design | B | | | |
| LR Code letter | H | | | |
| Service Factor | 1.15 | | | |
| Temp Rise @ FL | 55 | ° C | | |
| Duty | CONT | | | |
| Ambient | 40 | ° C | | |
| Elevation | 1,000 | feet | | |
| Rotor/Shaft wk² | 0.60 | Lb-Ft² | | |
| Ref Wdg | HE31322010 NONE | | | |
| Sound Pressure @ 1M | 72 | dBA | | |
| VFD Rating | VARIABLE 10:1 | | | |
| Outline Dwg | SS620737 | | | |
| Conn. Diag | EE7308 | | | |
| Additional Specifications: | | | | |
| 0 | | | | |
| 0 | | | | |
| EQUIV CKT (OHMS / PHASE) | | | | |
| R1 | R2 | X1 | X2 | Xm |
| 0.7920 | 0.5340 | 2.1190 | 1.4680 | 69.2960 |



Speed - Torque Curve

