

PRODUCT INFORMATION PACKET



Model No: 825541.00

Catalog No: 825541.00

825541.00..600HP..3600.508US.DP.460V.3PH.60HZ.CONT.40C.1.15SF.RIGID.....

Regal and Leeson are trademarks of Regal Rexnord Corporation or one of its affiliated companies.

©2023 Regal Rexnord Corporation, All Rights Reserved. MC017097E





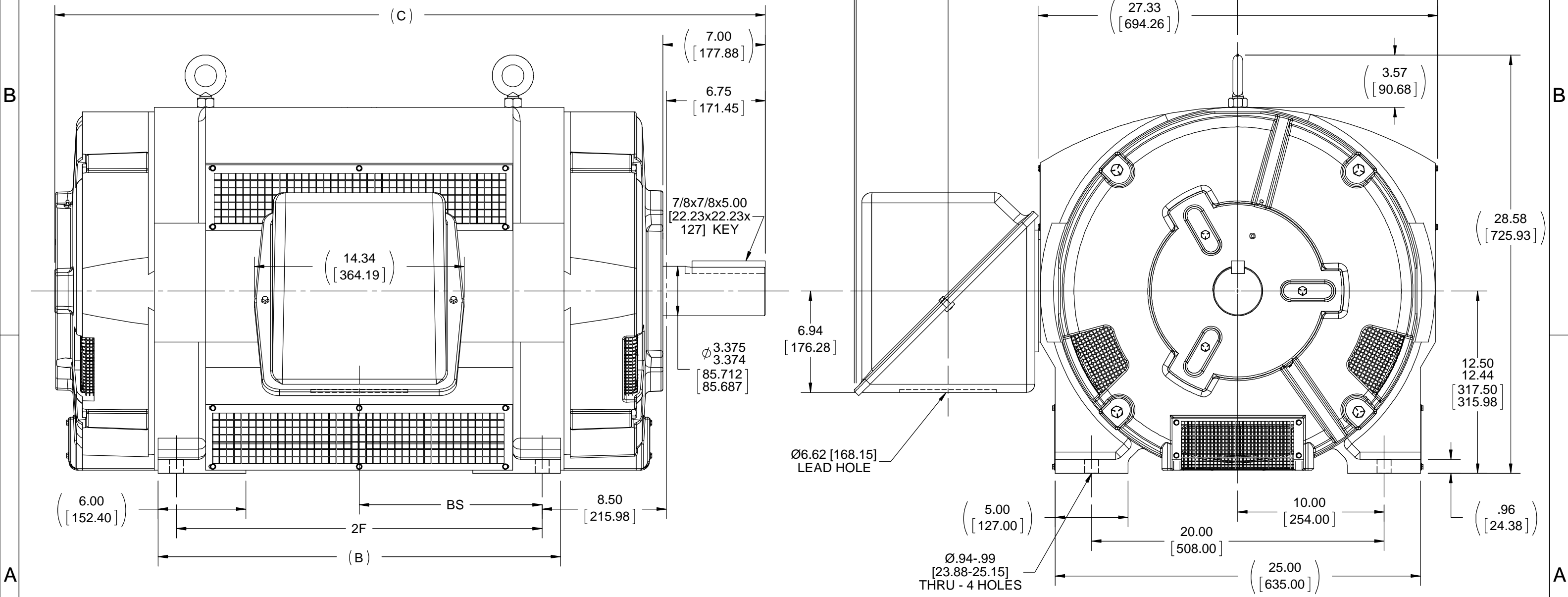
Nameplate Specifications

Phase	3	Output HP	600 Hp
Output KW	450 kW	Voltage	460 V
Speed	3558 rpm	Service Factor	1.15
Frame	508US	Enclosure	Drip Proof
Thermal Protection	No Protection	Efficiency	96.2 %
Ambient Temperature	40 °C	Frequency	60 Hz
Current	650.0 A	Power Factor	88
Duty	Continuous	Insulation Class	F
Design Code	B	KVA Code	F
Drive End Bearing Size	6318	Opp Drive End Bearing Size	6316
UL	Recognized	CSA	Y
CE	Y	IP Code	22
Number of Speeds	1		

Technical Specifications

Electrical Type	Squirrel Cage Induction Run	Starting Method	Wye Start Delta Run
Poles	2	Rotation	Reversible
Resistance Main	.0055 Ohms	Mounting	Rigid Base
Motor Orientation	Horizontal	Drive End Bearing	Ball
Opp Drive End Bearing	Ball	Frame Material	Cast Iron
Shaft Type	US	Assembly/Box Mounting	F1/F2 CAPABLE
Outline Drawing	SS519470-2800	Connection Drawing	EE7340-LE

This is an uncontrolled document once printed or downloaded and is subject to change without notice. Date Created:08/16/2023



- NOTES:
1. CONDUIT BOX CAN BE ROTATED IN 90° STEPS.
 2. CONDUIT BOX CAN BE MOUNTED ON OPPOSITE SIDE BY REMOVING BRACKETS AND TURNING FRAME 180°.
 3. NAMEPLATES TO BE READ FROM CONDUIT BOX SIDE OF MOTOR.

DASH	FRAME	B	C	2F	BS
2800	508US	27.50 [698.5]	48.57 [1233.38]	25.00 [635]	12.50 [317.5]
3500	510US	34.50 [876.3]	55.57 [1411.48]	32.00 [812.8]	16.00 [406.4]

DRAWING REVISION B	REVISION BY JJB	DATE 08-09-2017
ECO ECO-0129089	APPROVED BY	DATE
ECO DESCRIPTION ADDED MISSING D.E. SHAFT DIAMETER		
<small>COPYRIGHT REGAL BELOIT AMERICA, INC. ALL RIGHTS RESERVED. PROPRIETARY AND CONFIDENTIAL INFORMATION - THIS DOCUMENT IS THE PROPERTY OF REGAL BELOIT AMERICA, INC. ("OWNER") AND CONTAINS OWNER'S PROPRIETARY INFORMATION. ANY PERSON, CORPORATION OR OTHER FIRM RECEIVING IT IS DEEMED, BY RECEIVING IT, TO AGREE THAT IT, AND/OR ANY PART OF IT, SHALL NOT BE DISCLOSED TO ANY PERSON, CORPORATION OR OTHER ENTITY, DUPLICATED, AND/OR USED, EXCEPT AS EXPRESSLY APPROVED IN WRITING IN ADVANCE BY OWNER. THIS DOCUMENT SHALL BE RETURNED TO OWNER UPON REQUEST. IT MAY BE SUBJECT TO CERTAIN RESTRICTIONS UNDER APPLICABLE EXPORT CONTROL LAWS AND REGULATIONS.</small>		

TOLERANCES UNLESS OTHERWISE SPECIFIED:

DEC.	INCH	mm	ANGLE
.X	±0.1	[±2.5]	±7° 30"
.XX	±0.03	[±0.76]	
.XXX	±0.005	[±0.127]	
.XXXX	±0.0005	[±0.0127]	

REMOVE BURRS & BREAK SHARP EDGES: .003/.015 [0.076/.381] X 45°
CORNER FILLETS: R.02 [51]
MACHINED SURFACES: 200 INCH/mm 5.1

mm SHOWN IN [BRACKETS]

DRAWN BY KL	DATE 11-26-2002
APPROVED BY JES	DATE 11-27-2002
REFERENCE	
THIRD ANGLE PROJECTION	

REGAL™ Regal Beloit America, Inc.

DESCRIPTION
OUTLINE
508/510US FR. - DR. PR. - SCREENED

MATERIAL
PROCESS/FINISH

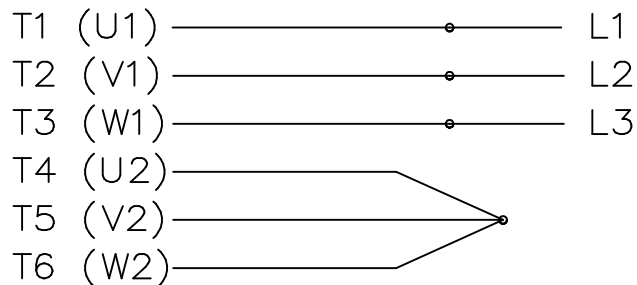
SIZE
B

DRAWING NUMBER
SS519470

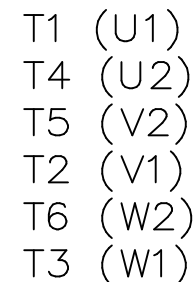
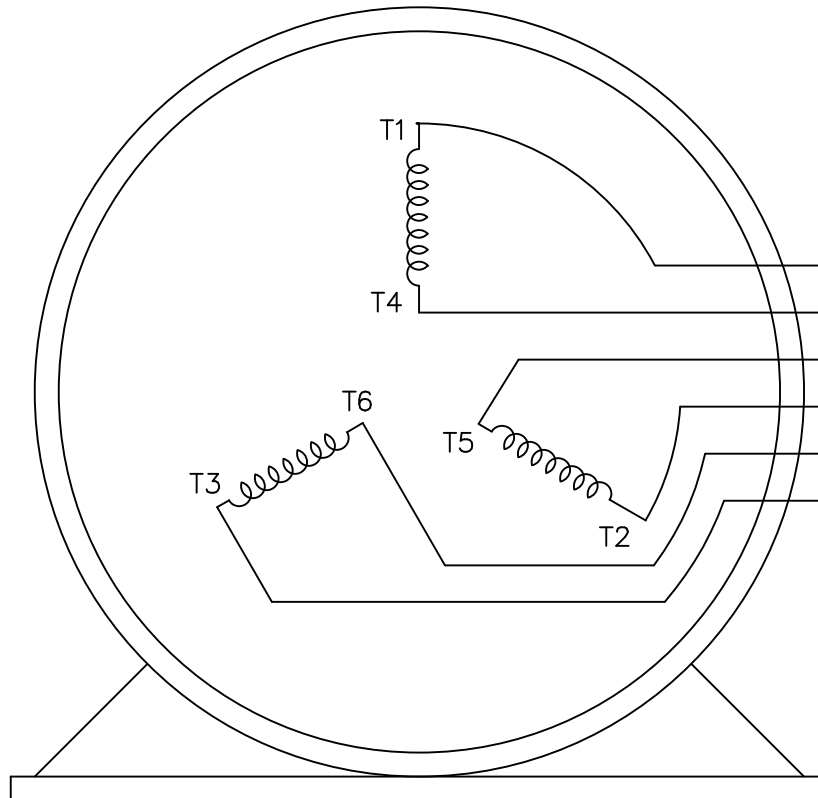
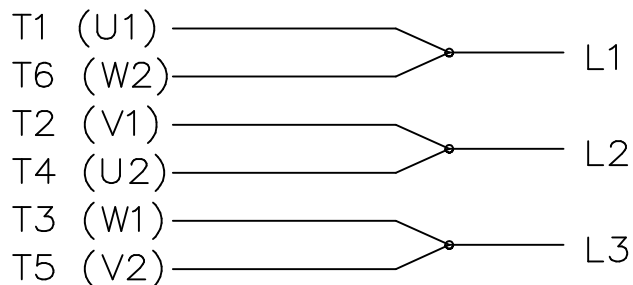
SHEET
1 OF 1

THREE PHASE
WYE START DELTA RUN

START




RUN



VIEW OF TERMINAL END

NOTE:
IEC LEAD MARKINGS ARE NOTED
IN PARANTHESES

				TOLERANCES UNLESS SPECIFIED		 ELECTRIC MOTORS GEARMOTORS AND DRIVES	DRAWN KL 01-27-2004			
				DEC.	INCHES		CHK ML 01-28-2004			
				.X	± -		APPD EAB 01-28-2004			
				.XX	± -		SCALE 1=1			
				.XXX	± -		REF			
				.XXXX	± -	MAT'L.	FMF MU60068			
NO.	REVISION	BY & DATE	CHK	ANG	± -	FINISH	PREV			
THIS DRAWING IN DESIGN AND DETAIL IS OUR PROPERTY AND MUST NOT BE USED EXCEPT IN CONNECTION WITH OUR WORK ALL RIGHTS OF DESIGN AND INVENTION ARE RESERVED THIS IS AN ELECTRONICALLY GENERATED DOCUMENT - DO NOT SCALE THIS PRINT				RFP	01-28-2004	CAD FILE EE7340-LE	SIZE A	DRAWING NO. EE7340-LE	PAGE OF	REV.
				DIST	WA-LB-LE-SB					