

# PRODUCT INFORMATION PACKET



Model No: 825484.00

Catalog No: 825484.00

825484.00..10HP..1765RPM.215T.EPFC.230/460//190/380V.3PH.60/50HZ.CONT.40C.1.15SF.RIGID.....

Regal and Leeson are trademarks of Regal Rexnord Corporation or one of its affiliated companies.

©2024 Regal Rexnord Corporation, All Rights Reserved. MC017097E



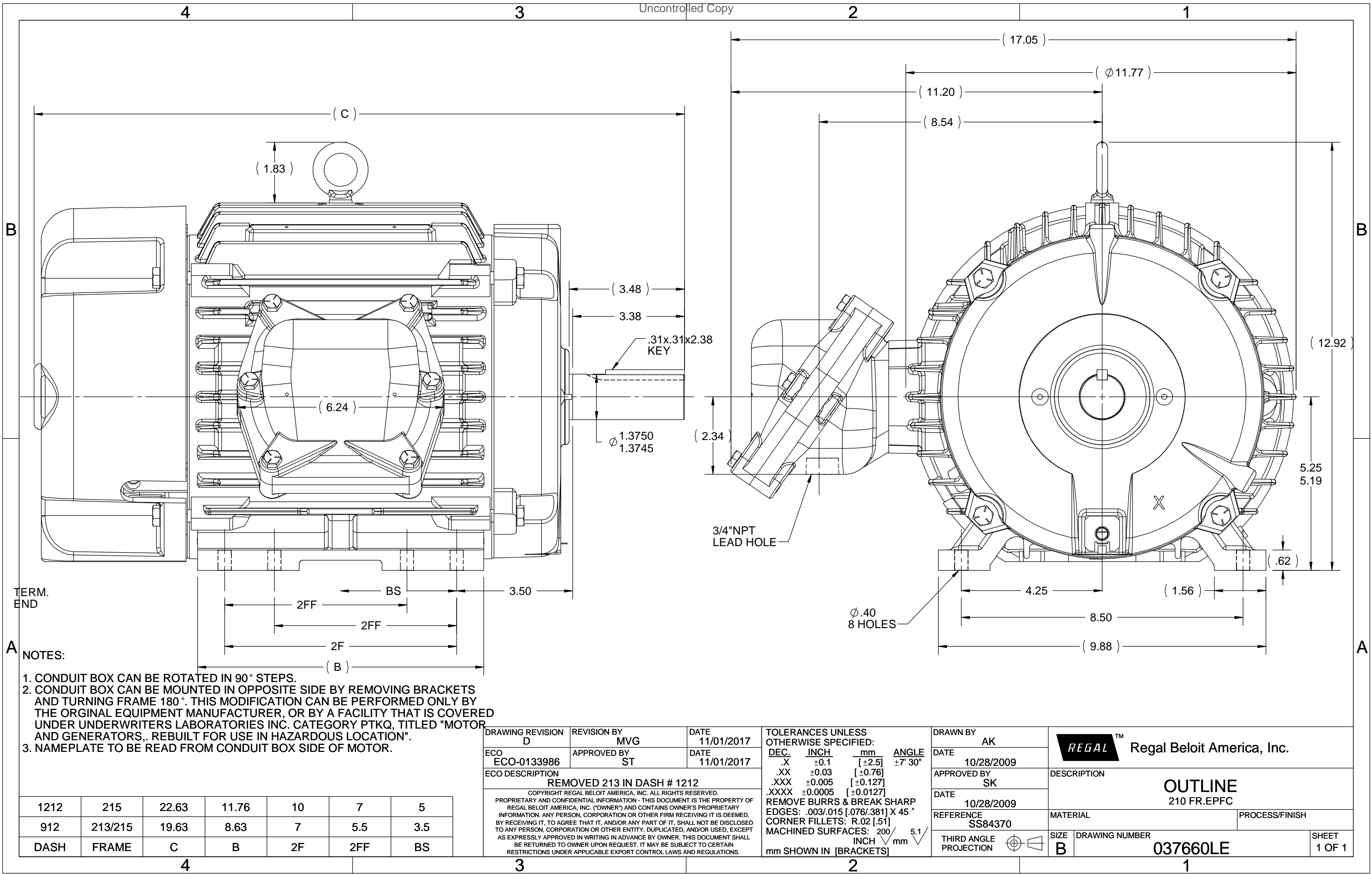


## Nameplate Specifications

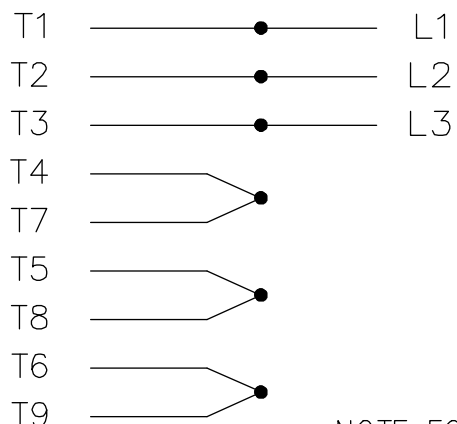
Phase	3	Output HP	10 & 7.50 Hp
Output KW	7.5 & 5.6 kW	Voltage	230/460 & 190/380 V
Speed	1765 & 1470 rpm	Service Factor	1.15 & 1.15
Frame	215T	Enclosure	Explosion Proof Fan cooled
Thermal Protection	Thermostat	Efficiency	91.7 & 91.5 %
Ambient Temperature	40 °C	Frequency	60 & 50 Hz
Current	25/12.5 & 23/11.5 A	Power Factor	82
Duty	Continuous	Insulation Class	F
Design Code	B	KVA Code	G
Drive End Bearing Size	6307	Opp Drive End Bearing Size	6208
UL	No	CSA	N
CE	N	IP Code	54
Number of Speeds	1	Hazardous Location	EXP PROOF CL I GR C&D CL II GR F&G T3C

## Technical Specifications

Electrical Type	Squirrel Cage Inverter Rated	Starting Method	Line Or Inverter
Poles	4	Rotation	Reversible
Resistance Main	.894 Ohms	Mounting	Rigid Base
Motor Orientation	Horizontal	Drive End Bearing	Ball
Opp Drive End Bearing	Ball	Frame Material	Cast Iron
Shaft Type	T	Assembly/Box Mounting	F1 ONLY
Inverter Load	CONSTANT 6:1		
Outline Drawing	037660LE-1212	Connection Drawing	EE7308T-LE

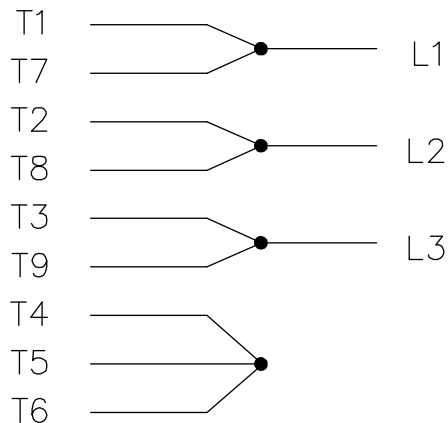


# HIGH VOLTAGE



NOTE FOR FACTORY USE ONLY:  
TO SURGE TEST FOR COMMON CONNECT:  
HIGH VOLT: CONNECT P1 TO T1  
THEN P2 TO L1  
LOW VOLT: CONNECT P1 TO T1 & T7,  
THEN P2 TO L1

# LOW VOLTAGE

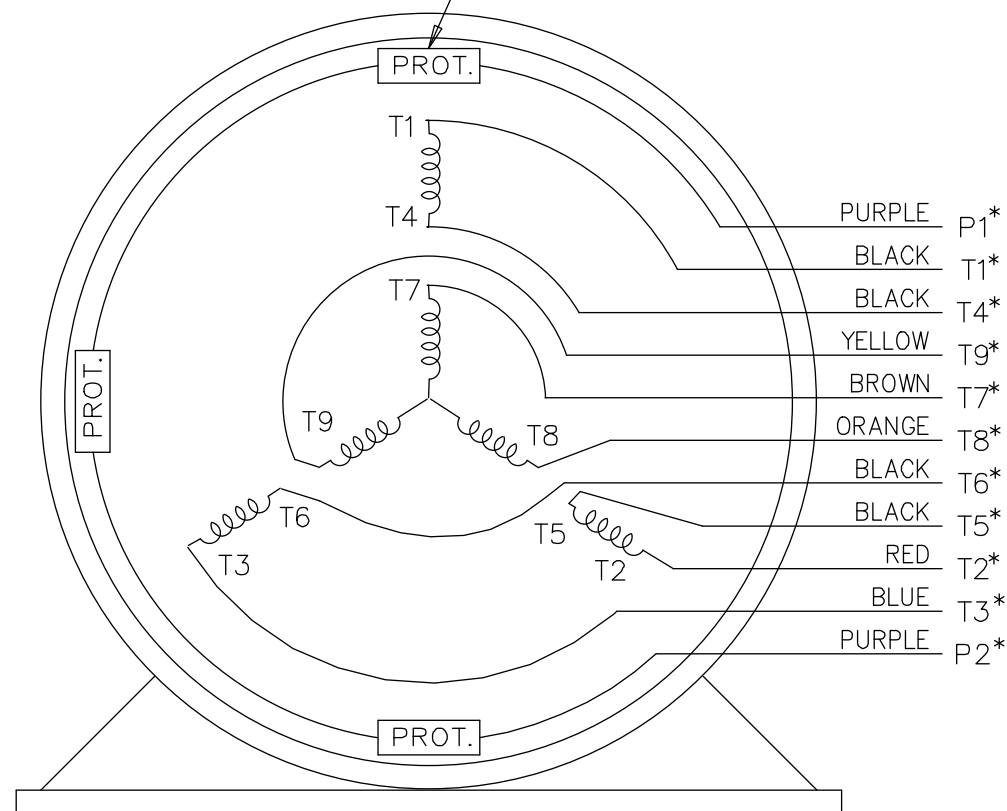


\* USE LEADS AS PER PLANT STANDARD IRRWSPECTIVE OF THEIR COLOUR.


# THREE PHASE DUAL VOLTAGE MOTOR

EE7308T-LE

THREMO-PROTECTORS  
CONNECTED IN SERIES.



VIEW OF TERMINAL END

			TOLERANCES UNLESS SPECIFIED			 ELECTRIC MOTORS GEARMOTORS AND DRIVES	DRAWN TJB 05-07-2002		
05	ADDED * NOTE PER ECN # 26921	UD 01-30-2013	JD	DEC.	INCHES		CHK	ML	05-08-2002
04	ADDED COLORS TO "T & P" LEADS CN 40494	MSG 08-08-2006	ML	.X	±.1	TITLE CONNECTION DIAGRAM 3 PHASE - DUAL VOLTAGE MOTOR	APPD	TB	05-08-2002
03	RE-ISSUE	NJS 04-21-2004	JET	.XX	±.02		SCALE	1=1	
02	REDRAWN	TAT 04-20-2004	ML	.XXX	±.005		REF		
01	NEW DRAWING CN 34708	TJB 05-08-2002	ML	.XXXX	±.0005		FMF		
NO.	REVISION	BY & DATE	CHK	ANG	±7'30"	FINISH	PREV		
THIS DRAWING IN DESIGN AND DETAIL IS OUR PROPERTY AND MUST NOT BE USED EXCEPT IN CONNECTION WITH OUR WORK ALL RIGHTS OF DESIGN AND INVENTION ARE RESERVED THIS IS AN ELECTRONICALLY GENERATED DOCUMENT - DO NOT SCALE THIS PRINT			RFP	CAD FILE EE7308T_LE		SIZE A	DRAWING NO.	PAGE OF	REV.
			DIST	LB-WP-LE			EE7308T-LE		05