

PRODUCT INFORMATION PACKET

Model No: 825416.00

Catalog No: 825416.00

Explosion Proof Motor, 60 HP, 3 Ph, 60 Hz, 230/460 V, 1200 RPM, 404T Frame, EPFC



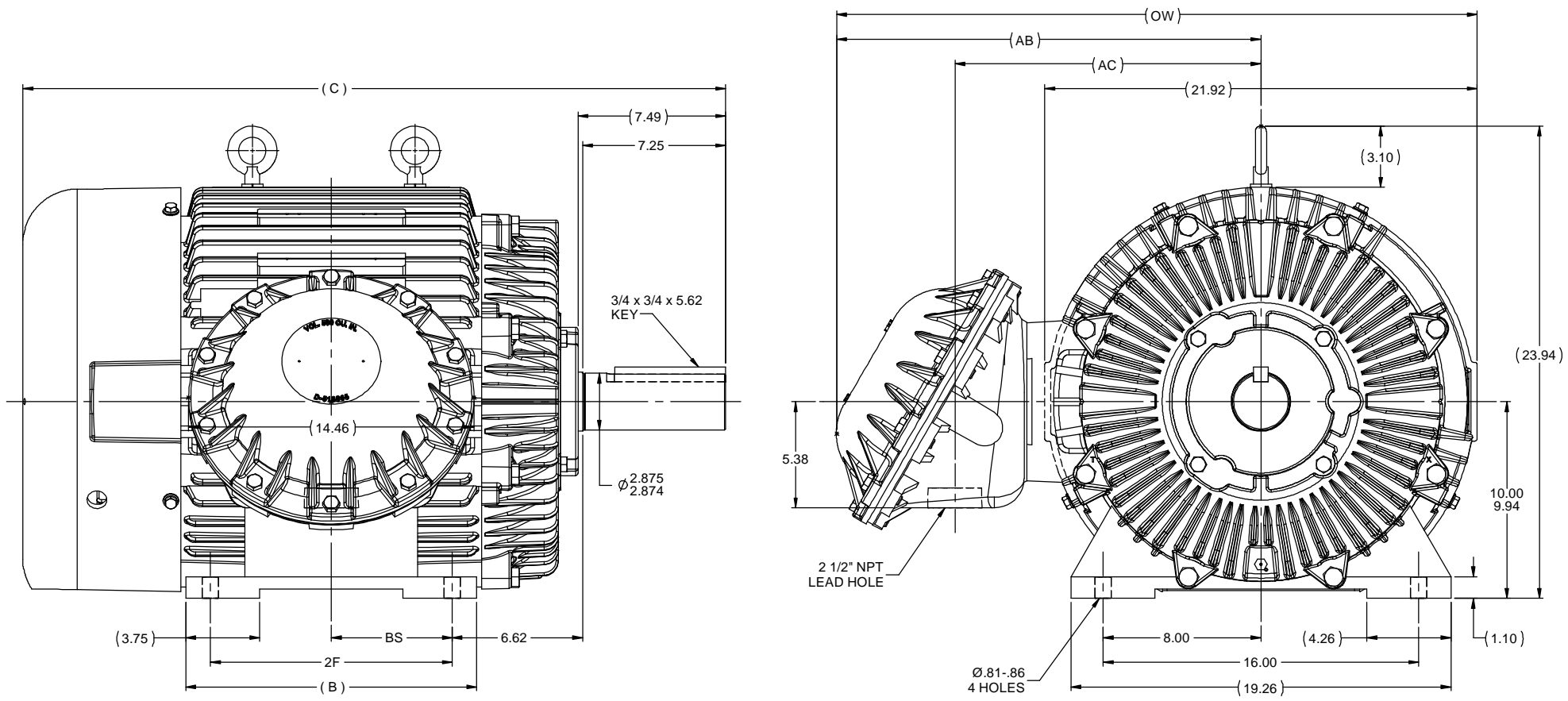
Regal and are trademarks of Regal Rexnord Corporation or one of its affiliated companies.
©2022 Regal Rexnord Corporation, All Rights Reserved. MC017097E

Nameplate Specifications

Output HP	60 Hp	Output KW	45.0 kW
Frequency	60 Hz	Voltage	230/460 V
Current	144.0/72.0 A	Speed	1185 rpm
Service Factor	1.15	Phase	3
Efficiency	94.5 %	Power Factor	83
Duty	Continuous	Insulation Class	F
Design Code	B	KVA Code	G
Frame	404T	Enclosure	Explosion Proof Fan cooled
Thermal Protection	Thermostat	Ambient Temperature	40 °C
Drive End Bearing Size	6316	Opp Drive End Bearing Size	6313
UL	UL Listed And CSA Certified	CSA	Y
CE	N	IP Code	54
Hazardous Location	EXP PROOF CL I GR C&D CL II GR F&G T3B	Number of Speeds	1

Technical Specifications

Electrical Type	Squirrel Cage Inverter Rated	Starting Method	Line Or Inverter
Poles	6	Rotation	Reversible
Resistance Main	.111 Ohms	Mounting	Rigid Base
Motor Orientation	Horizontal	Drive End Bearing	Ball
Opp Drive End Bearing	Ball	Frame Material	Cast Iron
Shaft Type	T	Overall Length	35.62 in
Frame Length	15.25 in	Shaft Diameter	2.875 in
Shaft Extension	7.25 in	Assembly/Box Mounting	F1 Only
Inverter Load	CONSTANT 10:1		
Outline Drawing	B-SS518777LE-1525	Connection Drawing	A-EE7308AD

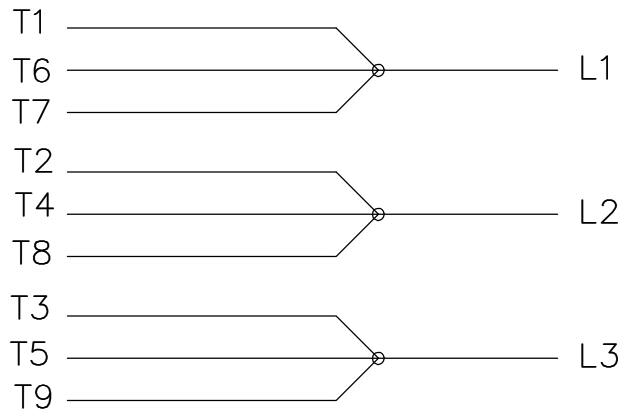


- NOTES:
 1. CONDUIT BOX CAN BE ROTATED IN 90° STEPS.
 2. CONDUIT BOX CAN BE MOUNTED ON OPPOSITE SIDE BY REMOVING BRACKETS AND TURNING FRAME 180°.
 3. NAMEPLATES TO BE READ FROM CONDUIT BOX SIDE OF MOTOR.

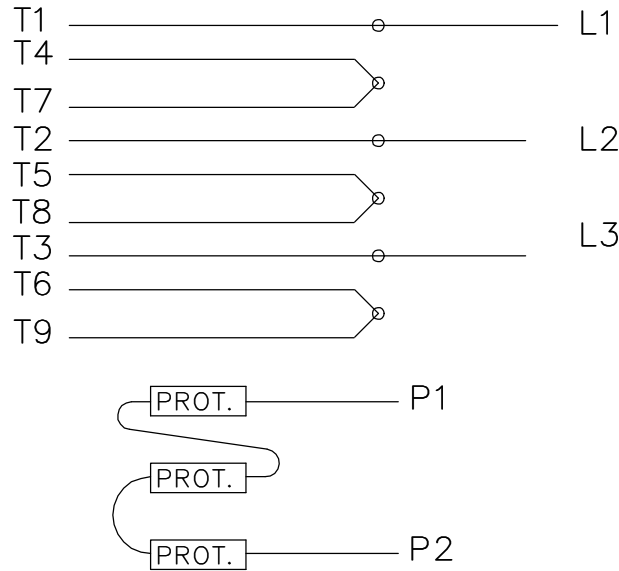
DASH	FRAME	B	C	2F	AB	AC	BS	OW
1525	404T	14.75	35.62	12.25	21.50	15.50	6.12	32.38
1675	405T	16.25	37.12	13.75	22.50	16.50	6.88	33.38

		TOLERANCES UNLESS SPECIFIED		ELECTRIC MOTORS GEARMOTORS AND DRIVES		DRAWN JJB 03-26-2012	
		DEC	INCHES			CHK NS 03-26-2012	
		X	±.1	TITLE OUTLINE 400T FR. - EXP. PR. - STD.		APPR MJS 03-26-2012	
		XX	±.03			SCALE 1:5	
		XXX	±.005	MATL		REF	
		XXXX	±.0005			FMF MU107090	
		CHK	ANG ±1/2°	FINISH		PAGE OF	
NO		REVISION		BY & DATE		SIZE DRAWING NO	
		THIRD ANGLE PROJECTION		RFP 03-26-2012		B SS518777LE	
				NETWORK FILE NAME SS518777LE		REV	

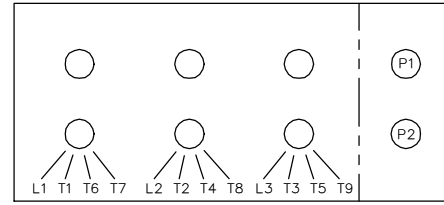
LOW VOLTAGE



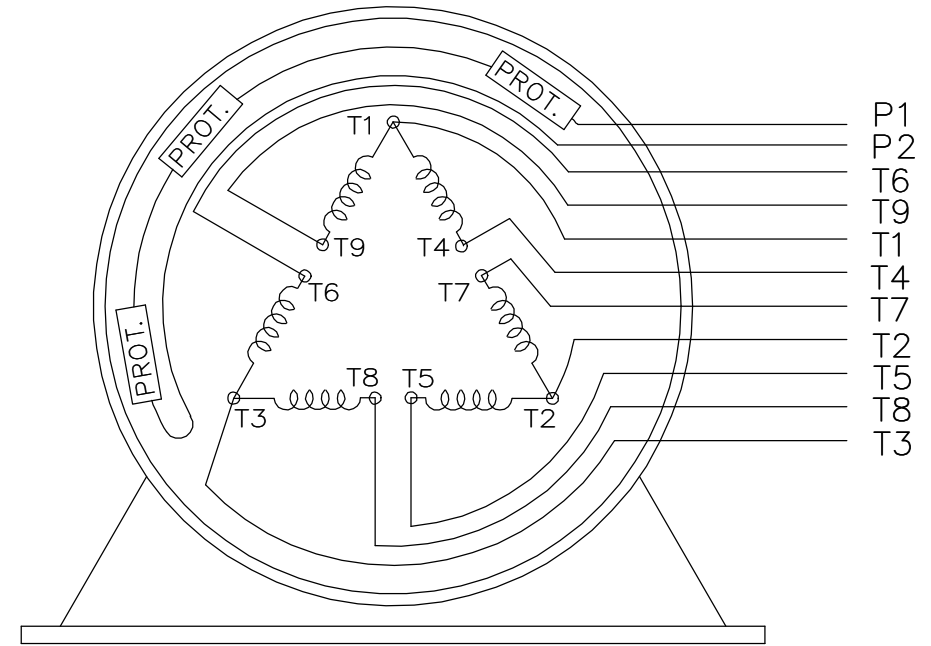
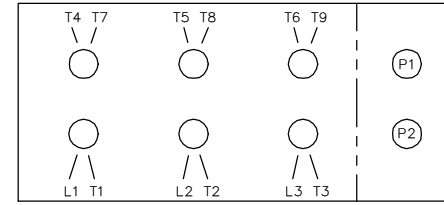
HIGH VOLTAGE



LOW VOLTAGE



HIGH VOLTAGE



VIEW OF TERMINAL END

WHEN MORE THAN ONE PROT. IS USED; PROT. ARE CONNECTED IN SERIES

DRAWING REVISION L		REVISION BY JP	REV DATE/© DATE 06-21-2019	TOLERANCES (EXCEPT AS NOTED): DEC. INCH mm ANGLE		DRAWN BY MJD		Regal Beloit America, Inc.	
ECO ECO-0168744		APPROVED BY MH	DATE 06-21-2019	.X ±0.1 [±3]	±7' 30"	DATE 12-19-1997	DESCRIPTION CONN DIAGRAM-EXTERNAL		
ECO DESCRIPTION UPDATED TO CURRENT STANDARDS				REMOVE BURRS & BREAK SHARP EDGES: .003/.015 [.08/.38] X 45°		APPROVED BY GK		MATERIAL	
COPYRIGHT (PER REVISION DATE) REGAL BELOIT AMERICA, INC. ALL RIGHTS RESERVED. PROPRIETARY AND CONFIDENTIAL INFORMATION - THIS DOCUMENT IS THE PROPERTY OF REGAL BELOIT AMERICA, INC. ("OWNER") AND CONTAINS OWNER'S PROPRIETARY INFORMATION. ANY PERSON, CORPORATION OR OTHER FIRM RECEIVING IT IS DEEMED, BY RECEIVING IT, TO AGREE THAT IT, AND/OR ANY PART OF IT, SHALL NOT BE DISCLOSED TO ANY PERSON, CORPORATION OR OTHER ENTITY, DUPLICATED, AND/OR USED, EXCEPT AS EXPRESSLY APPROVED IN WRITING IN ADVANCE BY OWNER. THIS DOCUMENT SHALL BE RETURNED TO OWNER UPON REQUEST. IT MAY BE SUBJECT TO CERTAIN RESTRICTIONS UNDER APPLICABLE EXPORT CONTROL LAWS AND REGULATIONS.				CORNER FILLETS: R.02 [.5]		DATE 01-07-1998		PROCESS/FINISH	
				MACHINED SURFACES: 200/ 5.1 INCH mm		REFERENCE		SIZE	
				mm DIMENSIONS IN [BRACKETS] ARE FOR REFERENCE ONLY		THIRD ANGLE PROJECTION		EE7308AD	
								SHEET 1 OF 1	

P.O. BOX 8003
 WAUSAU, WI 54401-8003
 PH. 715-675-3311



DATA VOLTS: 460

CERTIFICATION DATA SHEET

CONN. DIAGRAM: A-EE7308AD
 OUTLINE: B-SS518777LE-1525
 WINDING: T404640

CAT #: 825416.00

NONE 1

TYPICAL MOTOR PERFORMANCE DATA

HP	KW	SYNC RPM	FL RPM	FRAME	ENCLOSURE	TYPE	KVA CODE	DESIGN
60	45	1200	1185	404T	TEFC	TFS	G	BC

PH	HZ	VOLTS	AMPS	START TYPE	DUTY	INSL	S.F.	AMB	ELEV.
3	60	230/460	144/72	LINE OR INVERTER	CONT	F	1.15	40	3300

F.L. EFF	94.5	3/4 LD EFF	95.0	1/2 LD EFF	95.0	GTD EFF	94.1	ELECT. TYPE	SQ CAGE INV RATED
F.L. PF	83.0	3/4 LD PF	78.5	1/2 LD PF	70.0				

F.L. TORQUE	266 LB-FT	LR AMPS @ 460 V	435	L.R. TORQUE	535 LB-FT	B.D. TORQUE	650 LB-FT	F.L. RISE (°C)	244%
				201%				60	

PRESSURE @ 3	68 dBA	POWER	77 dBA	ROTOR WK²	33.5 LB-FT²	MAX. LOAD WK²	1000 LB-FT²	SAFE STALL TIME	25 SEC.	STARTS/HOUR	2	MOTOR WGT	1125 LB.
--------------	--------	-------	--------	-----------	-------------	---------------	-------------	-----------------	---------	-------------	---	-----------	----------

*** SUPPLEMENTAL INFORMATION ***

DE BRACKET TYPE	ODE BRACKET TYPE	MOUNT TYPE	MOTOR ORIENTATION	SEVERE DUTY	HAZARDOUS LOCATION	DRIP COVER	SCREENS	PAINT
STANDARD	STANDARD	RIGID	HORIZONTAL	UM SEVERE	DF CL I GR C&D CL II GF	NO	NONE	BLUE (EPOXY)

BEARINGS		GREASE	SHAFT TYPE	SPECIAL DE	SPECIAL ODE	SHAFT MATERIAL	FRAME MATERIAL
DE	ODE						
BALL	BALL	POLYREX EM	T	NONE	NONE	1045 HOT ROLLED (C-204)	CAST IRON
6316	6313						

THERMOSTATS	PROTECTORS	WDG RTD's	BRG RTD's	THERMISTORS	CONTROL	SPACE HEATERS
TSTATS (N/C)	NOT	NONE	NONE	NONE	FALSE	NA

R1 (ohms/ph)	R2 (ohms/ph)	X1 (ohms/ph)	X2 (ohms/ph)	Xm (ohms/ph)	VIBRATION (in/sec)	FLOAT
0.071	0.043	0.394	0.527	9.545	0.080	ODE

* N O T E S *			INVERTER TORQUE: CONSTANT 10:1 INV. HP SPEED RANGE: 1.5 X BASE SPEED
		ENCODER: NONE NONE NONE	NONE PPR

DATE: 1/19/2018	BRAKE: NONE		
	NONE		NONE
	FT-LB: NA		
VOLTAGE: NONE			HZ:
UL: NONE			

Data Sheet

Date: 1/19/2018

825416.00



Data @ **460 V**

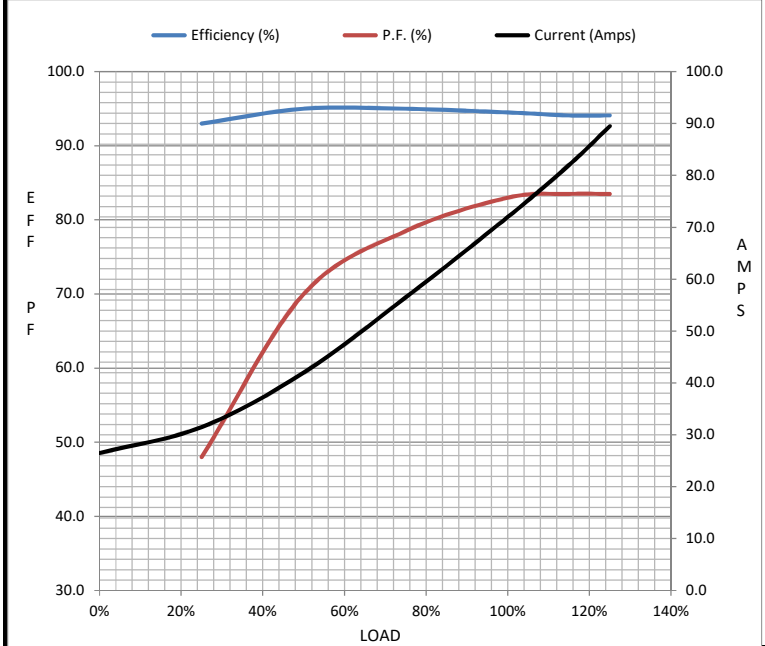
Motor Load Data

Load	0%	25%	50%	75%	100%	115%	125%	LR
Current (Amps)	26.5	31.5	42.0	56.5	72.0	82.0	89.5	435
Torque (ft-lb)	0.00	65.5	132	199	266	306	333	535
RPM	1200	1196	1194	1188	1185	1,182	1180	0
Efficiency (%)		93.0	95.0	95.0	94.5	94.1	94.1	
P.F. (%)	4.5	48.0	70.0	78.5	83.0	83.5	83.5	36.0

Motor Speed Data

	LR	Pull-Up	BD	Rated	Idle
Speed (RPM)	0	600	1050	1185	1200
Current (Amps)	435	390	240	72.0	26.5
Torque (ft-lb)	535	475	650	266	0.00

Information Block				
HP	60.0			
Sync. RPM	1200			
Frame	404			
Enclosure	TEFC			
Construction	TFS			
Voltage	230/460 V			
Frequency	60 Hz			
Design	B			
LR Code letter	G			
Service Factor	1.15			
Temp Rise @ FL	60 °C			
Duty	CONT			
Ambient	40 °C			
Elevation	1,000 feet			
Rotor/Shaft wk ²	33.5 Lb-Ft ²			
Ref Wdg	T404640 NONE			
Sound Pressure @ 1M	68 dBA			
VFD Rating	CONSTANT 10:1			
Outline Dwg	B-SS518777LE-1525			
Conn. Diag	A-EE7308AD			
Additional Specifications:				
0				
0				
EQUIV CKT (OHMS / PHASE)				
R1	R2	X1	X2	Xm
0.0710	0.0430	0.3940	0.5270	9.5450



Speed - Torque Curve

