

# PRODUCT INFORMATION PACKET



Model No: 825406.00

Catalog No: 825406.00

Explosion Proof Motor, 3 & 2 HP, 3 Ph, 60 & 50 Hz, 230/460 & 190/380 V, 1200 & 1000 RPM,  
213T Frame, EPFC



Regal and Leeson are trademarks of Regal Rexnord Corporation or one of its affiliated companies.  
©2024 Regal Rexnord Corporation, All Rights Reserved. MC017097E



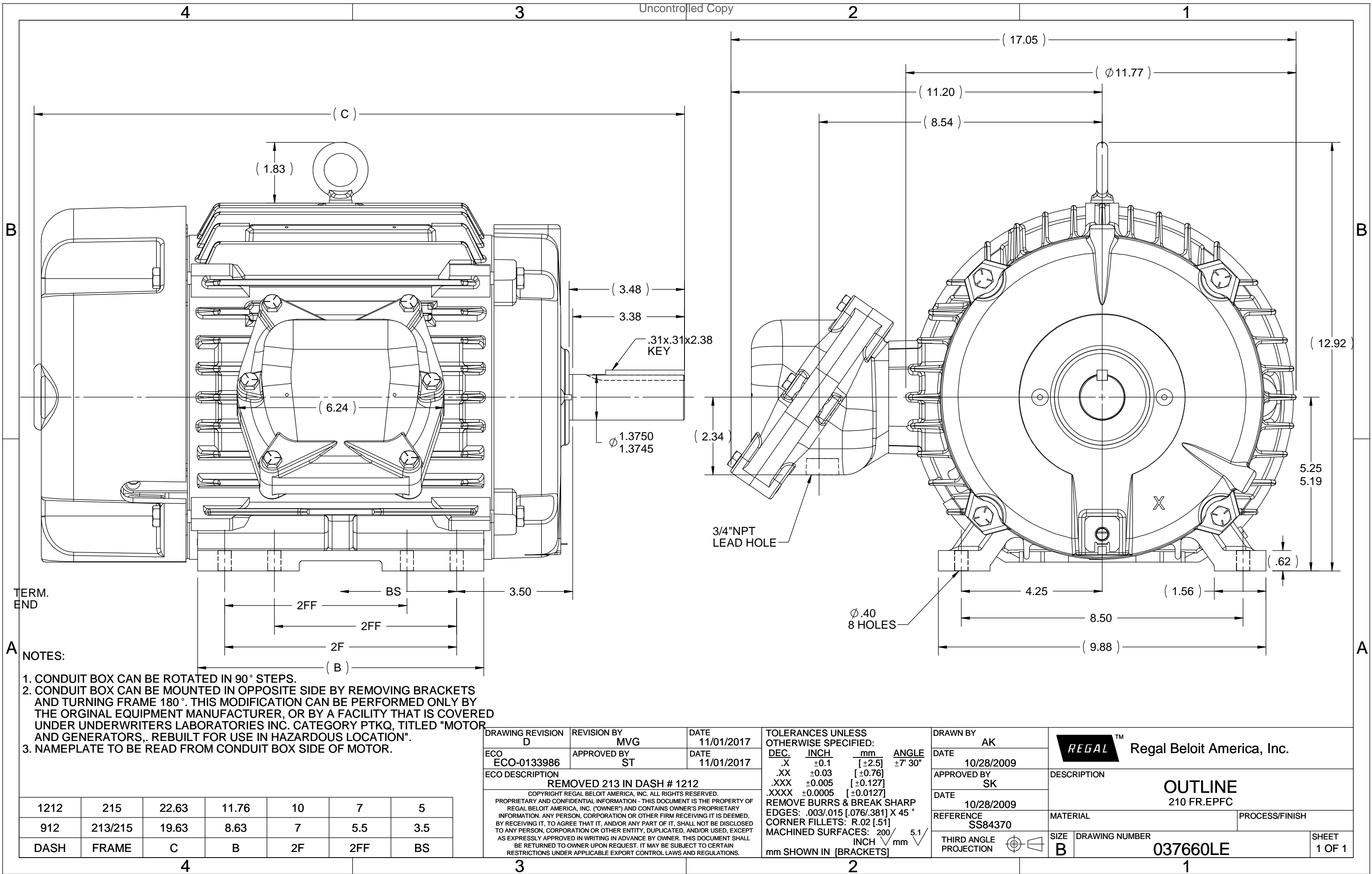


## Nameplate Specifications

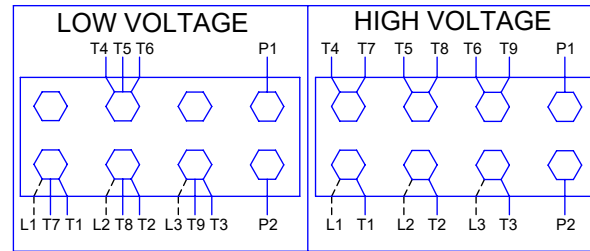
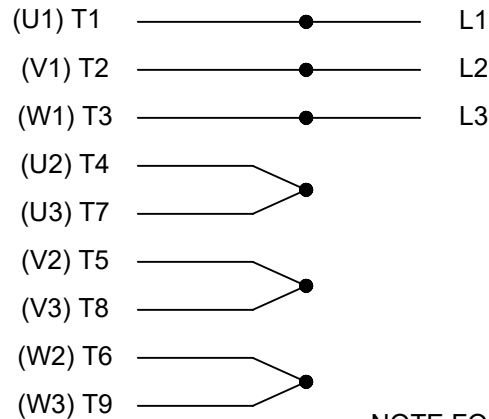
Phase	3	Output HP	3 & 2 Hp
Output KW	2.2 & 1.5 kW	Voltage	230/460 & 190/380 V
Speed	1175 & 975 rpm	Service Factor	1.15 & 1.15
Frame	213T	Enclosure	Explosion Proof Fan cooled
Thermal Protection	Thermostat	Efficiency	89.5 & 88.5 %
Ambient Temperature	40 °C	Frequency	60 & 50 Hz
Current	8.8/4.4 & 7.6/3.8 A	Power Factor	71.5
Duty	Continuous	Insulation Class	F
Design Code	B	KVA Code	K
Drive End Bearing Size	6307	Opp Drive End Bearing Size	6208
UL	No	CSA	N
CE	N	IP Code	54
Number of Speeds	1	Hazardous Location	EXP PROOF CL I GR D CL II GR F&G T3B

## Technical Specifications

Electrical Type	Squirrel Cage Inverter Rated	Starting Method	Line Or Inverter
Poles	6	Rotation	Reversible
Resistance Main	2.7431 Ohms	Mounting	Rigid Base
Motor Orientation	Horizontal	Drive End Bearing	Ball
Opp Drive End Bearing	Ball	Frame Material	Cast Iron
Shaft Type	T	Overall Length	19.63 in
Frame Length	9.13 in	Shaft Diameter	1.375 in
Shaft Extension	3.38 in	Assembly/Box Mounting	F1 Only
Outline Drawing	037660LE-912	Connection Drawing	EE7308T

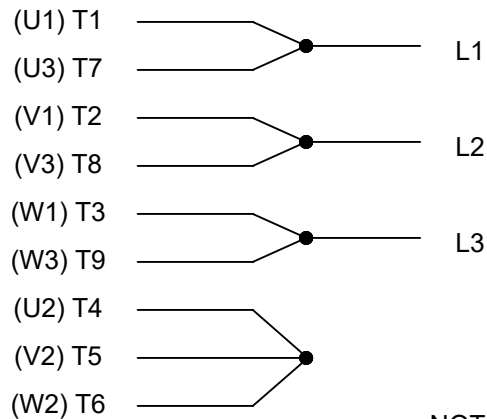
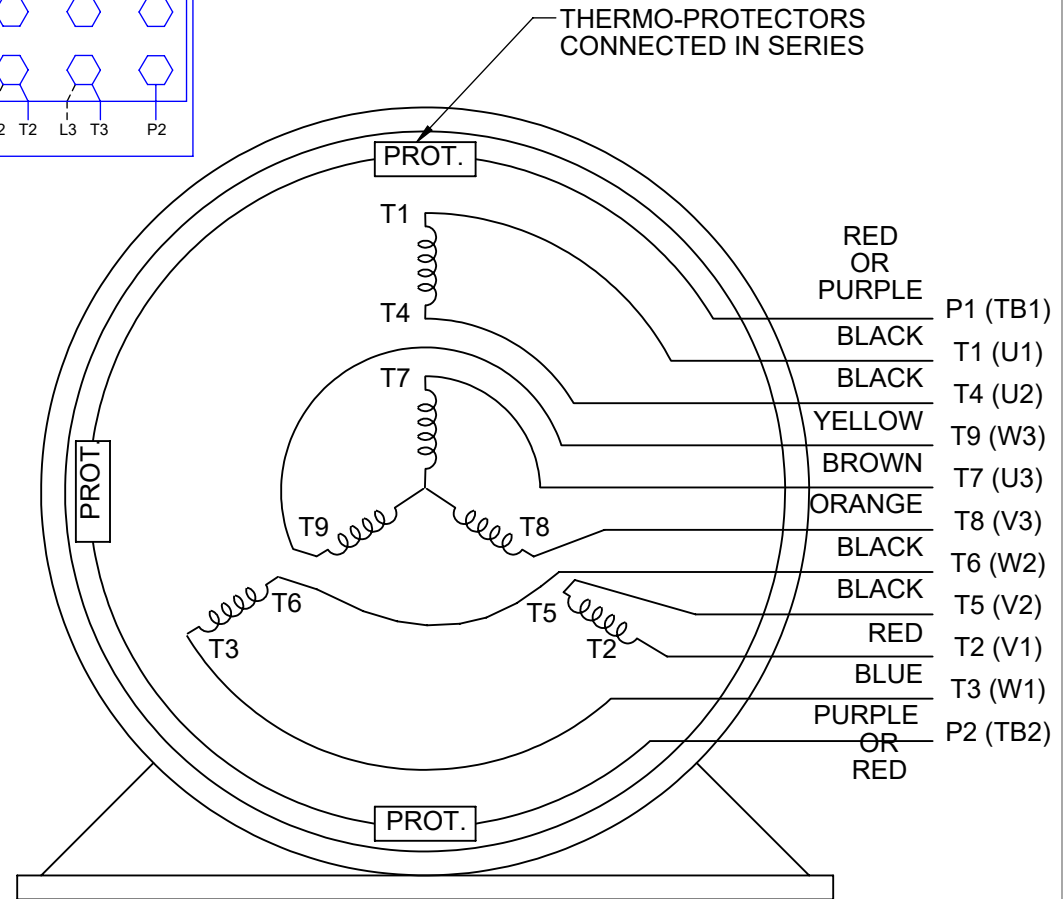


## HIGH VOLTAGE



NOTE FOR FACTORY USE ONLY:  
TO SURGE TEST FOR COMMON CONNECT:  
HIGH VOLT: CONNECT P1 TO T1  
THEN P2 TO L1  
LOW VOLT: CONNECT P1 TO T1 & T7,  
THEN P2 TO L1

## LOW VOLTAGE

THREE PHASE  
DUAL VOLTAGE MOTOR

## VIEW OF TERMINAL END

NOTE: LEAD'S COLOR CAN BE YELLOW OR WHITE FOR MT2 PLANT

DRAWING REVISION T	REVISION BY ZR	DATE 01-14-2019
ECO ECO-0159915	APPROVED BY DR	DATE 01-15-2019

ECO DESCRIPTION  
ADDED TERMINAL CONNECTION DIAGRAM

COPYRIGHT REGAL BELOIT AMERICA, INC. ALL RIGHTS RESERVED.  
PROPRIETARY AND CONFIDENTIAL INFORMATION - THIS DOCUMENT IS THE PROPERTY OF  
REGAL BELOIT AMERICA, INC. ("OWNER") AND CONTAINS OWNER'S PROPRIETARY  
INFORMATION. ANY PERSON, CORPORATION OR OTHER FIRM RECEIVING IT IS DEEMED,  
BY RECEIVING IT, TO AGREE THAT IT, AND/OR ANY PART OF IT, SHALL NOT BE DISCLOSED  
TO ANY PERSON, CORPORATION OR OTHER ENTITY, DUPLICATED, AND/OR USED, EXCEPT  
AS EXPRESSLY APPROVED IN WRITING IN ADVANCE BY OWNER. THIS DOCUMENT SHALL  
BE RETURNED TO OWNER UPON REQUEST. IT MAY BE SUBJECT TO CERTAIN  
RESTRICTIONS UNDER APPLICABLE EXPORT CONTROL LAWS AND REGULATIONS.

DRAWN BY SMC	DATE 05-13-1992
APPROVED BY TB	DATE 05-13-1992
REFERENCE EE7308/EE7300	THIRD ANGLE PROJECTION



Regal Beloit America, Inc.

## DESCRIPTION

**CONN DIAGRAM-INTERNAL**  
3 PHASE - DUAL VOLTAGE MOTOR

MATERIAL	PROCESS/FINISH
SIZE A	DRAWING NUMBER EE7308T
SHEET 1 OF 1	



1051 CHEYENNE AVE.  
GRAFTON, WI 53024  
PH. 262-277-8810

DATA VOLTS: 460

### CERTIFICATION DATA SHEET

CONN. DIAGRAM: EE7308T

CAT #: 825406.00

OUTLINE: 037660LE-912

WINDING: K213699

NONE 2

### TYPICAL MOTOR PERFORMANCE DATA

HP	KW	SYNC RPM	FL RPM	FRAME	ENCLOSURE	TYPE	KVA CODE	DESIGN
3	2.2	1200	1175	213T	TEFC	TFN	K	B

PH	HZ	VOLTS	AMPS	START TYPE	DUTY	INSL	S.F.	AMB	ELEV.
3	60/50	230/460#190/380	8.8/4.4&7.6/3.8	LINE OR INVERTER	CONT	F	1.15	40	3300

F.L. EFF	89.5	3/4 LD EFF	88.7	1/2 LD EFF	86.7	GTD EFF		ELECT. TYPE	
F.L. PF	71.5	3/4 LD PF	64.1	1/2 LD PF	52.4	87.5		SQ CAGE INV RATED	

F.L. TORQUE	LR AMPS @ 460 V	L.R. TORQUE	B.D. TORQUE	F.L. RISE (° C)	
13.4 LB-FT	32.0	31.0 LB-FT 231%	47.0 LB-FT 351%	35	

PRESSURE @ 3	SOUND	POWER	ROTOR WK²	MAX. LOAD WK²	SAFE STALL TIME	STARTS/HOUR	MOTOR WGT
55 dBA	64 dBA		0.80 LB-FT²	90 LB-FT²	25 SEC.	2	160 LB.

### \*\*\* SUPPLEMENTAL INFORMATION \*\*\*

DE BRACKET TYPE	ODE BRACKET TYPE	MOUNT TYPE	MOTOR ORIENTATION	SEVERE DUTY	HAZARDOUS LOCATION	DRIP COVER	SCREENS	PAINT
STANDARD	STANDARD	RIGID	HORIZONTAL	TRUE	DOF CL I GR D CL II GR	NO	NONE	WATTS AVER

BEARINGS	GREASE	SHAFT TYPE	SPECIAL DE	SPECIAL ODE	SHAFT MATERIAL	FRAME MATERIAL
DE ODE						
BALL BALL	POLYREX EM	T	NONE	NONE	1045 HOT ROLLED (C-204)	CAST IRON
6307 6208						

THERMOSTATS	PROTECTORS	WDG RTD's	BRG RTD's	THERMISTORS	CONTROL	SPACE HEATERS
TSTATS (N/C)	NOT	NONE	NONE	NONE	FALSE	NA

R1 (ohms/ph)	R2 (ohms/ph)	X1 (ohms/ph)	X2 (ohms/ph)	Xm (ohms/ph)	VIBRATION (in/sec)	FLOAT
1.721	1.503	6.713	7.138	98.208	0.150	ODE

* N O T E S *		INVERTER TORQUE: CONSTANT 10:1 INV. HP SPEED RANGE: NONE
	ENCODER: NONE NONE NONE	NONE PPR

DATE: 8/29/2018	BRAKE: NONE NONE	NONE
	FT-LB: NA	
	VOLTAGE: NONE	HZ:
	UL: NONE	

## Data Sheet

Date: 8/29/2018

825406.00



Data @ 460 V

## Motor Load Data

Load	0%	25%	50%	75%	100%	115%	125%	LR	
Current (Amps)	2.60	2.75	3.1	3.7	4.4	4.9	5.2	32.0	
Torque (ft-lb)	0.00	3.3	6.7	10.0	13.4	15.5	16.9	31.0	
RPM	1200	1194	1188	1180	1175	1,170	1166	0	
Efficiency (%)		80.0	86.7	88.7	89.5	88.8	88.2		
P.F. (%)	7.2	31.9	52.4	64.1	71.5	74.3	76.5	40.0	

## Motor Speed Data

Motor Speed Data																															
	LR	Pull-Up	BD	Rated	Idle																										
Speed (RPM)	0	600	1025	1175	1200																										
Current (Amps)	32.0	28.0	20.0	4.4	2.60																										
Torque (ft-lb)	31.0	30.0	47.0	13.4	0.00																										
<div><div>— Efficiency (%)</div><div>— P.F. (%)</div><div>— Current (Amps)</div><table><caption>Graph Data Points (Estimated)</caption><thead><tr><th>Load (%)</th><th>Efficiency (%)</th><th>P.F. (%)</th><th>Current (Amps)</th></tr></thead><tbody><tr><td>25</td><td>80</td><td>32</td><td>2.6</td></tr><tr><td>50</td><td>88</td><td>55</td><td>3.5</td></tr><tr><td>75</td><td>89</td><td>68</td><td>4.2</td></tr><tr><td>100</td><td>90</td><td>72</td><td>4.4</td></tr><tr><td>125</td><td>88</td><td>76</td><td>4.8</td></tr></tbody></table></div>						Load (%)	Efficiency (%)	P.F. (%)	Current (Amps)	25	80	32	2.6	50	88	55	3.5	75	89	68	4.2	100	90	72	4.4	125	88	76	4.8	Information Block	
						Load (%)	Efficiency (%)	P.F. (%)	Current (Amps)																						
						25	80	32	2.6																						
						50	88	55	3.5																						
						75	89	68	4.2																						
						100	90	72	4.4																						
						125	88	76	4.8																						
						HP		3.0																							
						Sync. RPM		1200																							
						Frame		213																							
						Enclosure		TEFC																							
						Construction		TFN																							
						Voltage		230/460#190/380	V																						
						Frequency		60	Hz																						
						Design		B																							
						LR Code letter		K																							
						Service Factor		1.15																							
Temp Rise @ FL		35	° C																												
Duty		CONT																													
Ambient		40	° C																												
Elevation		1,000	feet																												
Rotor/Shaft wk <sup>2</sup>		0.80	Lb-Ft <sup>2</sup>																												
Ref Wdg		K213699	NONE																												
Sound Pressure @ 1M		55	dBA																												
VFD Rating		CONSTANT 10:1																													
Outline Dwg		037660LE-912																													
Conn. Diag		EE7308T																													
Additional Specifications:																															
0																															
0																															
EQUIV CKT (OHMS / PHASE)																															
R1		R2		X1		X2		Xm																							
1.7210		1.5030		6.7130		7.1380		98.2080																							

## Speed - Torque Curve

