

PRODUCT INFORMATION PACKET



Model No: 825396.00

Catalog No: 825396.00

825396.00..60/50HP..1800/1500RPM.364T.EPFC.230/460//190/380V.3PH.60/50HZ.CONT.40C.1.15SF.RIGID.....

.....

Regal and Leeson are trademarks of Regal Rexnord Corporation or one of its affiliated companies.

©2023 Regal Rexnord Corporation, All Rights Reserved. MC017097E



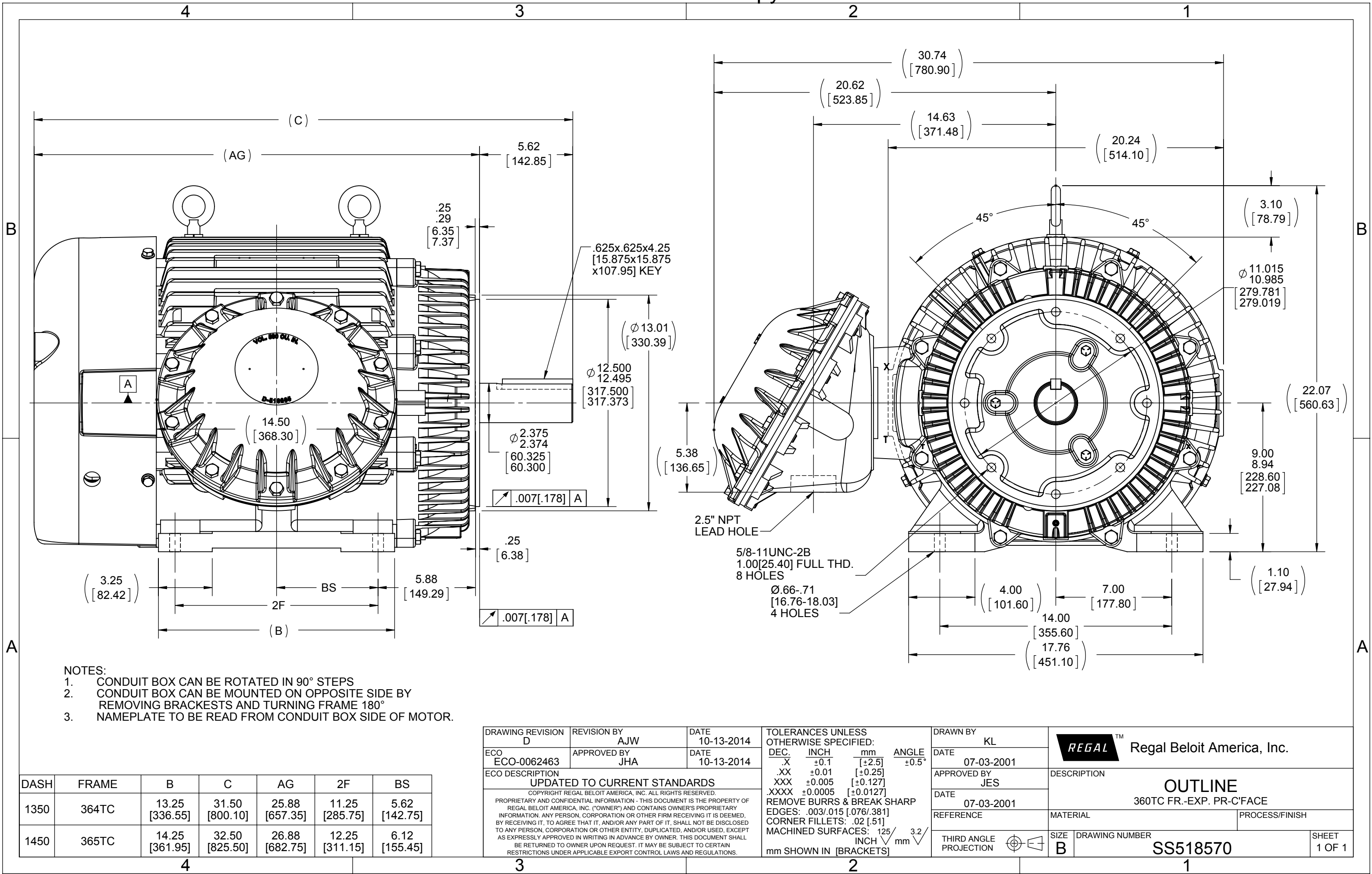


Nameplate Specifications

Phase	3	Output HP	60 & 50 Hp
Output KW	45.0 & 37.0 kW	Voltage	230/460 & 190/380 V
Speed	1780 & 1480 rpm	Service Factor	1.15 & 1.15
Frame	364TC	Enclosure	Explosion Proof Fan cooled
Thermal Protection	Thermostat	Efficiency	95 & 94.5 %
Ambient Temperature	50 °C	Frequency	60 & 50 Hz
Current	138/69 & 139/69.5 A	Power Factor	86
Duty	Continuous	Insulation Class	F
Design Code	B	KVA Code	G
Drive End Bearing Size	6314	Opp Drive End Bearing Size	6312
UL	No	CSA	N
CE	N	IP Code	54
Number of Speeds	1	Hazardous Location	EXP PROOF CL I GR C&D CL II GR F&G T3B

Technical Specifications

Electrical Type	Squirrel Cage Inverter Rated	Starting Method	Line Or Inverter
Poles	4	Rotation	Reversible
Resistance Main	.101 Ohms	Mounting	Rigid Base
Motor Orientation	Horizontal	Drive End Bearing	Ball
Opp Drive End Bearing	Ball	Frame Material	Cast Iron
Shaft Type	T	Assembly/Box Mounting	F1 ONLY
Inverter Load	CONSTANT 2:1		
Outline Drawing	B-SS518570-1350	Connection Drawing	A-EE7308AD-LE




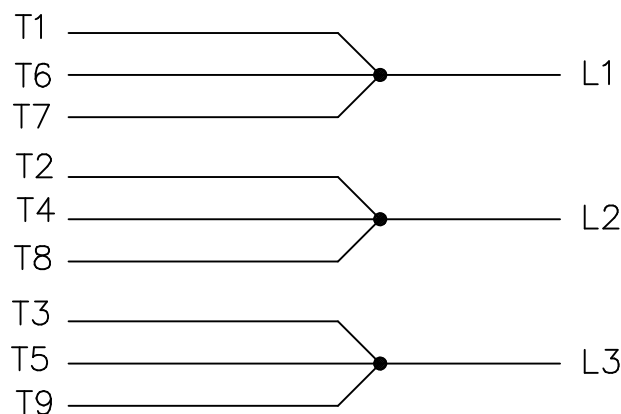
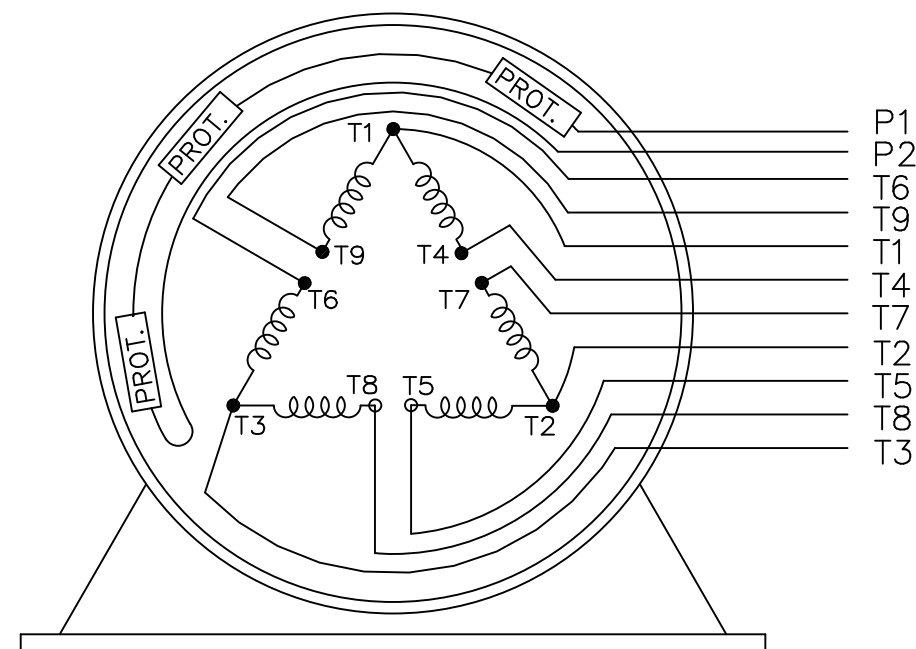
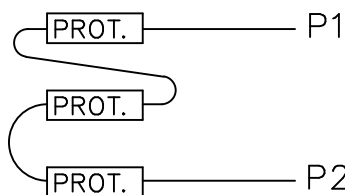
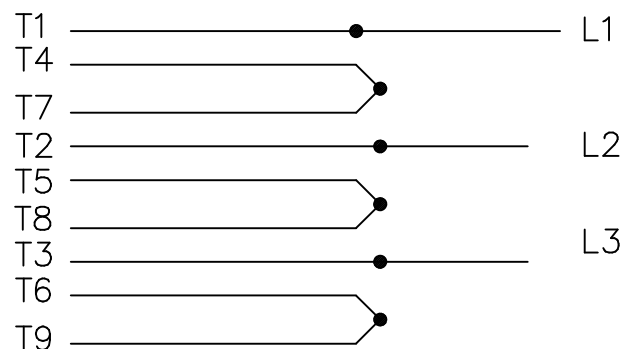
- NOTES:
1. CONDUIT BOX CAN BE ROTATED IN 90° STEPS
 2. CONDUIT BOX CAN BE MOUNTED ON OPPOSITE SIDE BY REMOVING BRACKETES AND TURNING FRAME 180°
 3. NAMEPLATE TO BE READ FROM CONDUIT BOX SIDE OF MOTOR.

DASH	FRAME	B	C	AG	2F	BS
1350	364TC	13.25 [336.55]	31.50 [800.10]	25.88 [657.35]	11.25 [285.75]	5.62 [142.75]
1450	365TC	14.25 [361.95]	32.50 [825.50]	26.88 [682.75]	12.25 [311.15]	6.12 [155.45]


DRAWING REVISION D	REVISION BY AJW	DATE 10-13-2014
ECO ECO-0062463	APPROVED BY JHA	DATE 10-13-2014
ECO DESCRIPTION UPDATED TO CURRENT STANDARDS COPYRIGHT REGAL BELOIT AMERICA, INC. ALL RIGHTS RESERVED PROPRIETARY AND CONFIDENTIAL INFORMATION - THIS DOCUMENT IS THE PROPERTY OF REGAL BELOIT AMERICA, INC. ("OWNER") AND CONTAINS OWNER'S PROPRIETARY INFORMATION. ANY PERSON, CORPORATION OR OTHER FIRM RECEIVING IT IS DEEMED, BY RECEIVING IT, TO AGREE THAT IT, AND/OR ANY PART OF IT, SHALL NOT BE DISCLOSED TO ANY PERSON, CORPORATION OR OTHER ENTITY, DUPLICATED, AND/OR USED, EXCEPT AS EXPRESSLY APPROVED IN WRITING IN ADVANCE BY OWNER. THIS DOCUMENT SHALL BE RETURNED TO OWNER UPON REQUEST. IT MAY BE SUBJECT TO CERTAIN RESTRICTIONS UNDER APPLICABLE EXPORT CONTROL LAWS AND REGULATIONS.		

TOLERANCES UNLESS OTHERWISE SPECIFIED:		
DEC.	INCH	mm
.X	±0.1	[±2.5]
.XX	±0.01	[±0.25]
.XXX	±0.005	[±0.127]
.XXXX	±0.0005	[±0.0127]
REMOVE BURRS & BREAK SHARP		
EDGES: .003/.015 [0.076/.381]		
CORNER FILLETS: .02 [0.51]		
MACHINED SURFACES: 125 3.2		
mm SHOWN IN [BRACKETS]		

DRAWN BY KL	 Regal Beloit America, Inc.	
DATE 07-03-2001		
APPROVED BY JES	DESCRIPTION OUTLINE	
DATE 07-03-2001	360TC FR.-EXP. PR-C'FACE	
REFERENCE	MATERIAL	PROCESS/FINISH
THIRD ANGLE PROJECTION	SIZE B	DRAWING NUMBER SS518570
		SHEET 1 OF 1

LOW VOLTAGEHIGH VOLTAGEVIEW OF TERMINAL END

WHEN MORE THAN ONE PROT. IS USED; PROT. ARE CONNECTED IN SERIES

				TOLERANCES UNLESS SPECIFIED		 ELECTRIC MOTORS GEARMOTORS AND DRIVES	DRAWN NJS 05-15-2002				
				DEC.	INCHES		CHK	ML	05-20-2002		
				.X	±.1		APPD	TB	05-20-2002		
				.XX	±.02		SCALE				
2	HIGH VOLT. SCHEMATIC WAS L1, L3, & L3	CN 32724	DRS 06-12-2004	ML	.XXX	±.005	TITLE CONNECTION DIAGRAM 3ø – WITH PROTECTORS			REF	
1	NEW DRAWING	CN 35132	NJS 05-20-2002	TB	.XXXX	±.0005	MAT'L.			FMF	
NO.	REVISION		BY & DATE	CHK	ANG	± 7'30"	FINISH			PREV	
THIS DRAWING IN DESIGN AND DETAIL IS OUR PROPERTY AND MUST NOT BE USED EXCEPT IN CONNECTION WITH OUR WORK ALL RIGHTS OF DESIGN AND INVENTION ARE RESERVED THIS IS AN ELECTRONICALLY GENERATED DOCUMENT – DO NOT SCALE THIS PRINT				RFP		CAD FILE ee7308ad_le		SIZE	DRAWING NO.	PAGE OF	REV.
				DIST WA—LB				A	EE7308AD—LE		2