

PRODUCT INFORMATION PACKET



Model No: 824564.00

Catalog No: 824564.00

Severe Duty Motor, 60 & 50 HP, 3 Ph, 60 & 50 Hz, 230/460 & 190/380 V, 1200 & 1000 RPM, 404T Frame,
TEAO



Regal and Leeson are trademarks of Regal Rexnord Corporation or one of its affiliated companies.

©2023 Regal Rexnord Corporation, All Rights Reserved. MC017097E



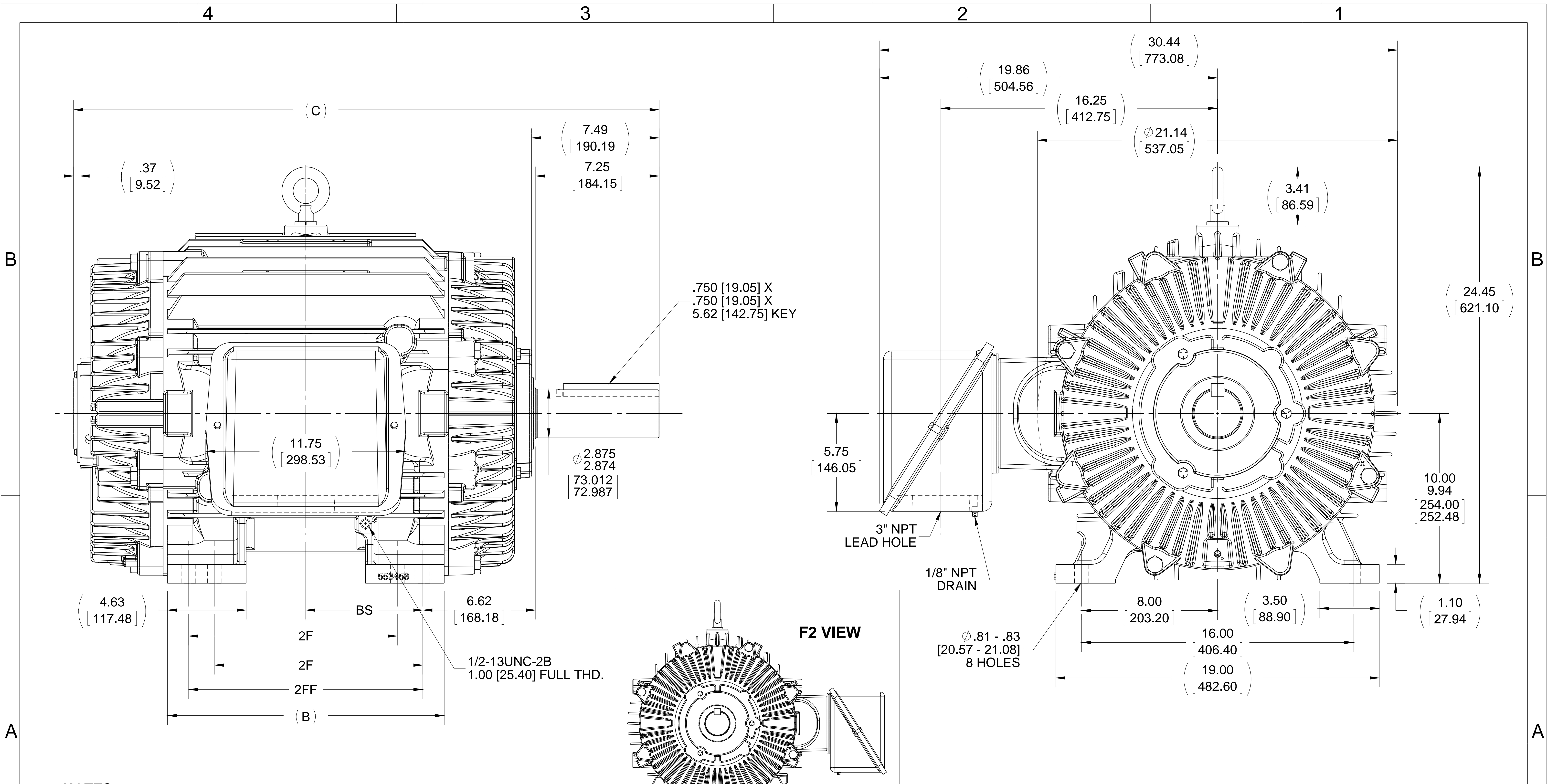


Nameplate Specifications

Phase	3	Output HP	60 & 50 Hp
Output KW	45.0 & 37.0 kW	Voltage	230/460 & 190/380 V
Speed	1185 & 985 rpm	Service Factor	1.15 & 1.0
Frame	404T	Enclosure	Totally Enclosed Air Over
Thermal Protection	Thermostat	Efficiency	94.5 & 94.1 %
Ambient Temperature	40 °C	Frequency	60 & 50 Hz
Current	144/72 & 144/72 A	Power Factor	83
Duty	Continuous	Insulation Class	F
Design Code	B	KVA Code	G
Drive End Bearing Size	6316	Opp Drive End Bearing Size	6313
UL	Recognized	CSA	Y
CE	Y	IP Code	56
Number of Speeds	1		

Technical Specifications

Electrical Type	Squirrel Cage Inverter Rated	Starting Method	Line Or Inverter
Poles	6	Rotation	Reversible
Resistance Main	.111 Ohms	Mounting	Rigid Base
Motor Orientation	Horizontal	Drive End Bearing	Ball
Opp Drive End Bearing	Ball	Frame Material	Cast Iron
Shaft Type	T	Overall Length	34.38 in
Frame Length	16.75 in	Shaft Diameter	2.875 in
Shaft Extension	7.25 in	Assembly/Box Mounting	F1/F2 CAPABLE
Inverter Load	VARIABLE 10:1		
Connection Drawing	EE7308AD-LE	Outline Drawing	SS555787LE-1675



- NOTES:**
1. CONDUIT BOX CAN BE ROTATED IN 90° STEPS.
 2. CONDUIT BOX CAN BE MOUNTED ON OPPOSITE SIDE BY REMOVING BRACKETS AND TURNING FRAME 180°.
 3. NAMEPLATES TO BE READ FROM CONDUIT BOX SIDE OF MOTOR.

DASH	FRAME	B	C	2F	2FF	BS
1675	404/405T	16.75 [425.45]	34.38 [873.25]	12.25 [311.15]	13.75 [349.25]	6.88 [174.75]

DRAWING REVISION E	REVISION BY AJW	DATE 05-11-2015
ECO ECO-0077297	APPROVED BY JHA	DATE 05-11-2015
ECO DESCRIPTION REMOVED "T" FROM 1/8" NPT DRAIN CALLOUT		
<small>COPYRIGHT REGAL BELOIT AMERICA, INC. ALL RIGHTS RESERVED. PROPRIETARY AND CONFIDENTIAL INFORMATION - THIS DOCUMENT IS THE PROPERTY OF REGAL BELOIT AMERICA, INC. ("OWNER") AND CONTAINS OWNER'S PROPRIETARY INFORMATION. ANY PERSON, CORPORATION OR OTHER FIRM RECEIVING IT IS DEEMED, BY RECEIVING IT, TO AGREE THAT IT, AND/OR ANY PART OF IT, SHALL NOT BE DISCLOSED TO ANY PERSON, CORPORATION OR OTHER ENTITY, DUPLICATED, AND/OR USED, EXCEPT AS EXPRESSLY APPROVED IN WRITING IN ADVANCE BY OWNER. THIS DOCUMENT SHALL BE RETURNED TO OWNER UPON REQUEST. IT MAY BE SUBJECT TO CERTAIN RESTRICTIONS UNDER APPLICABLE EXPORT CONTROL LAWS AND REGULATIONS.</small>		

TOLERANCES UNLESS OTHERWISE SPECIFIED:

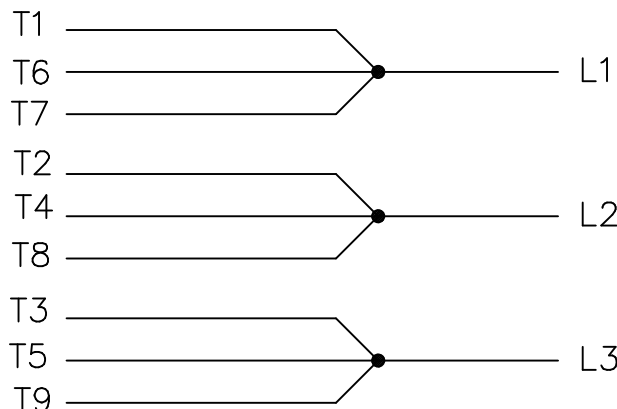
DEC.	INCH	mm	ANGLE
.X	±0.1	[±2.5]	±7' 30"
.XX	±0.03	[±0.76]	
.XXX	±0.005	[±0.127]	
.XXXX	±0.0005	[±0.0127]	

REMOVE BURRS & BREAK SHARP EDGES: .003/.015 [0.076/.381]
 CORNER FILLETS: .02 [.51]
 MACHINED SURFACES: 200 INCH/mm 5.1
 mm SHOWN IN [BRACKETS]

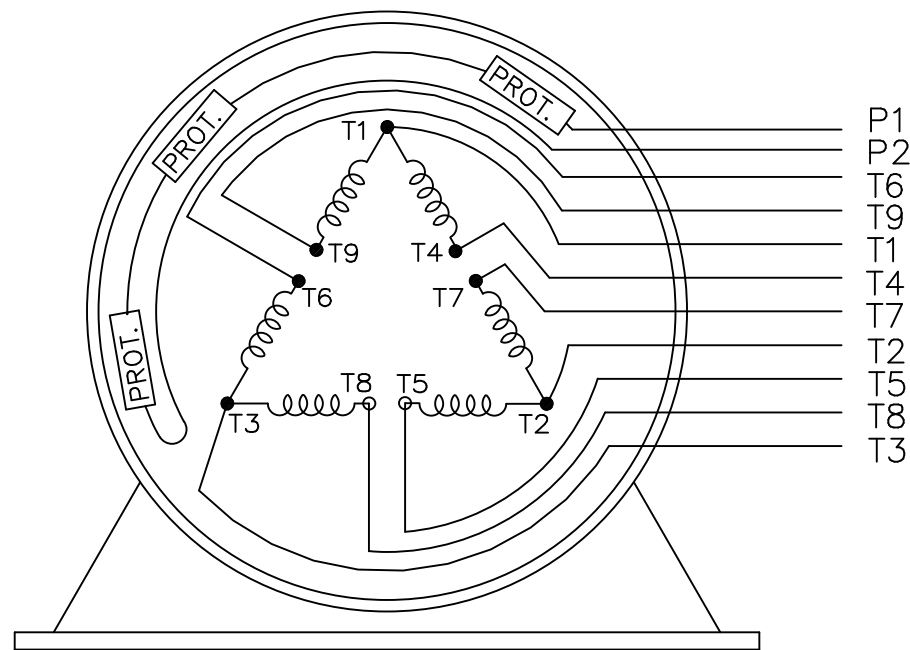
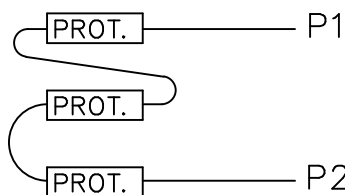
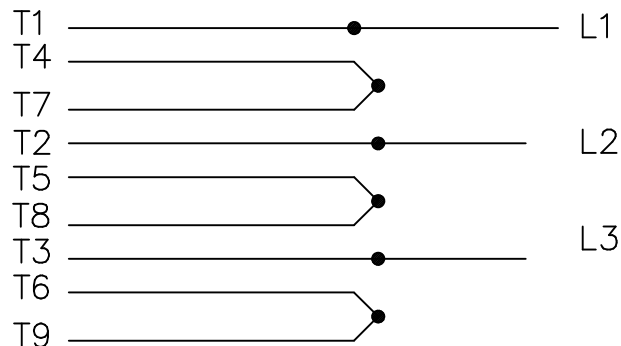
DRAWN BY HV	DATE 06-06-2013
APPROVED BY DJK	DATE 06-07-2013
REFERENCE	THIRD ANGLE PROJECTION

REGAL ™ Regal Beloit America, Inc.	
DESCRIPTION OUTLINE 400T FR. - TAPPED LEAD HOLE	
MATERIAL	PROCESS/FINISH
SIZE B	DRAWING NUMBER SS555787LE
	SHEET 1 OF 1

LOW VOLTAGE




HIGH VOLTAGE



VIEW OF TERMINAL END

WHEN MORE THAN ONE PROT. IS USED; PROT. ARE CONNECTED IN SERIES

				TOLERANCES UNLESS SPECIFIED		 ELECTRIC MOTORS GEARMOTORS AND DRIVES	DRAWN NJS 05-15-2002		
				DEC.	INCHES		CHK	ML 05-20-2002	
				.X	±.1		APPD	TB 05-20-2002	
				.XX	±.02	TITLE CONNECTION DIAGRAM		SCALE	
2	HIGH VOLT. SCHEMATIC WAS L1, L3, & L3	CN 32724	DRS 06-12-2004	ML	.XXX ±.005	3Ø - WITH PROTECTORS		REF	
1	NEW DRAWING	CN 35132	NJS 05-20-2002	TB	.XXXX ±.0005	MAT'L.		FMF	
NO.	REVISION	BY & DATE	CHK	ANG	±7'30"	FINISH		PREV	
THIS DRAWING IN DESIGN AND DETAIL IS OUR PROPERTY AND MUST NOT BE USED EXCEPT IN CONNECTION WITH OUR WORK ALL RIGHTS OF DESIGN AND INVENTION ARE RESERVED THIS IS AN ELECTRONICALLY GENERATED DOCUMENT - DO NOT SCALE THIS PRINT				RFP	CAD FILE ee7308ad_le		SIZE	DRAWING NO. PAGE OF	REV.
				DIST	WA-LB	A	EE7308AD-LE	2	

P.O. BOX 8003
 WAUSAU, WI 54401-8003
 PH. 715-675-3311



DATA VOLTS: 460

CERTIFICATION DATA SHEET

CONN. DIAGRAM: A-EE7308AD-LE
 OUTLINE: B-SS555787LE-1675
 WINDING: T404640

CAT #: 824564.00

R8 1

TYPICAL MOTOR PERFORMANCE DATA

HP	KW	SYNC RPM	FL RPM	FRAME	ENCLOSURE	TYPE	KVA CODE	DESIGN
60	45	1200	1185	404T	TEAO	TTS	G	BC

PH	HZ	VOLTS	AMPS	START TYPE	DUTY	INSL	S.F.	AMB	ELEV.
3	60/50	230/460#190/380	144/72&144/72	LINE OR INVERTER	CONT	F	1.15	40	3300

F.L. EFF	94.5	3/4 LD EFF	95.0	1/2 LD EFF	95.0	GTD EFF	94.1	ELECT. TYPE	SQ CAGE INV RATED
F.L. PF	83.0	3/4 LD PF	78.5	1/2 LD PF	70.0				

F.L. TORQUE	266 LB-FT	LR AMPS @ 460 V	435	L.R. TORQUE	535 LB-FT 201%	B.D. TORQUE	650 LB-FT 244%	F.L. RISE (°C)	0
-------------	-----------	-----------------	-----	-------------	----------------	-------------	----------------	----------------	---

PRESSURE @ 3	999 dBA	POWER	1008 dBA	ROTOR WK²	33.5 LB-FT²	MAX. LOAD WK²	1000 LB-FT²	SAFE STALL TIME	25 SEC.	STARTS/HOUR	2	MOTOR WGT	1075 LB.
--------------	---------	-------	----------	-----------	-------------	---------------	-------------	-----------------	---------	-------------	---	-----------	----------

*** SUPPLEMENTAL INFORMATION ***

DE BRACKET TYPE	ODE BRACKET TYPE	MOUNT TYPE	MOTOR ORIENTATION	SEVERE DUTY	HAZARDOUS LOCATION	DRIP COVER	SCREENS	PAINT
STANDARD	STANDARD	RIGID	HORIZONTAL	UM SEVERE	NONE	NO	NONE	UE - LEESON (EPO)

BEARINGS		GREASE	SHAFT TYPE	SPECIAL DE	SPECIAL ODE	SHAFT MATERIAL	FRAME MATERIAL
DE	ODE						
BALL	BALL	POLYREX EM	T	NONE	NONE	1045 HOT ROLLED (C-204)	CAST IRON
6316	6313						

THERMOSTATS	PROTECTORS	WDG RTD's	BRG RTD's	THERMISTORS	CONTROL	SPACE HEATERS
TSTATS (N/C)	NOT	NONE	NONE	NONE	FALSE	NA

R1 (ohms/ph)	R2 (ohms/ph)	X1 (ohms/ph)	X2 (ohms/ph)	Xm (ohms/ph)	VIBRATION (in/sec)	FLOAT
0.071	0.043	0.394	0.527	9.545	0.080	ODE

* N O T E S *	INVERTER TORQUE: VARIABLE 10:1 INV. HP SPEED RANGE: NONE	
	ENCODER: NONE NONE NONE	
	NONE PPR	

DATE: 1/22/2018	BRAKE: NONE NONE NONE	NONE
	FT-LB: NA	NONE
	VOLTAGE: NONE	HZ:
	UL: Y-(LEESON UL REC)	

Data Sheet

Date: 1/22/2018

824564.00



Data @ **460 V**

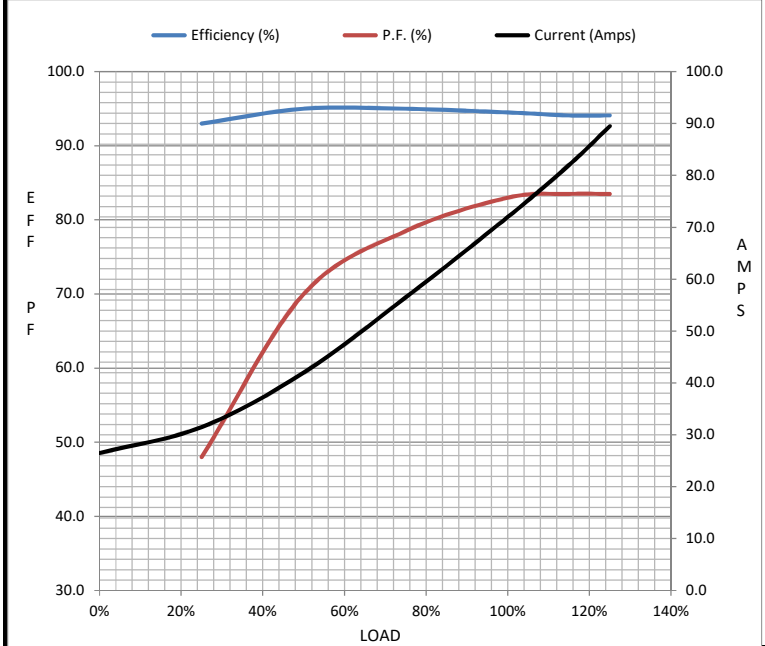
Motor Load Data

Load	0%	25%	50%	75%	100%	115%	125%	LR
Current (Amps)	26.5	31.5	42.0	56.5	72.0	82.0	89.5	435
Torque (ft-lb)	0.00	65.5	132	199	266	306	333	535
RPM	1200	1196	1194	1188	1185	1,182	1180	0
Efficiency (%)		93.0	95.0	95.0	94.5	94.1	94.1	
P.F. (%)	4.5	48.0	70.0	78.5	83.0	83.5	83.5	36.0

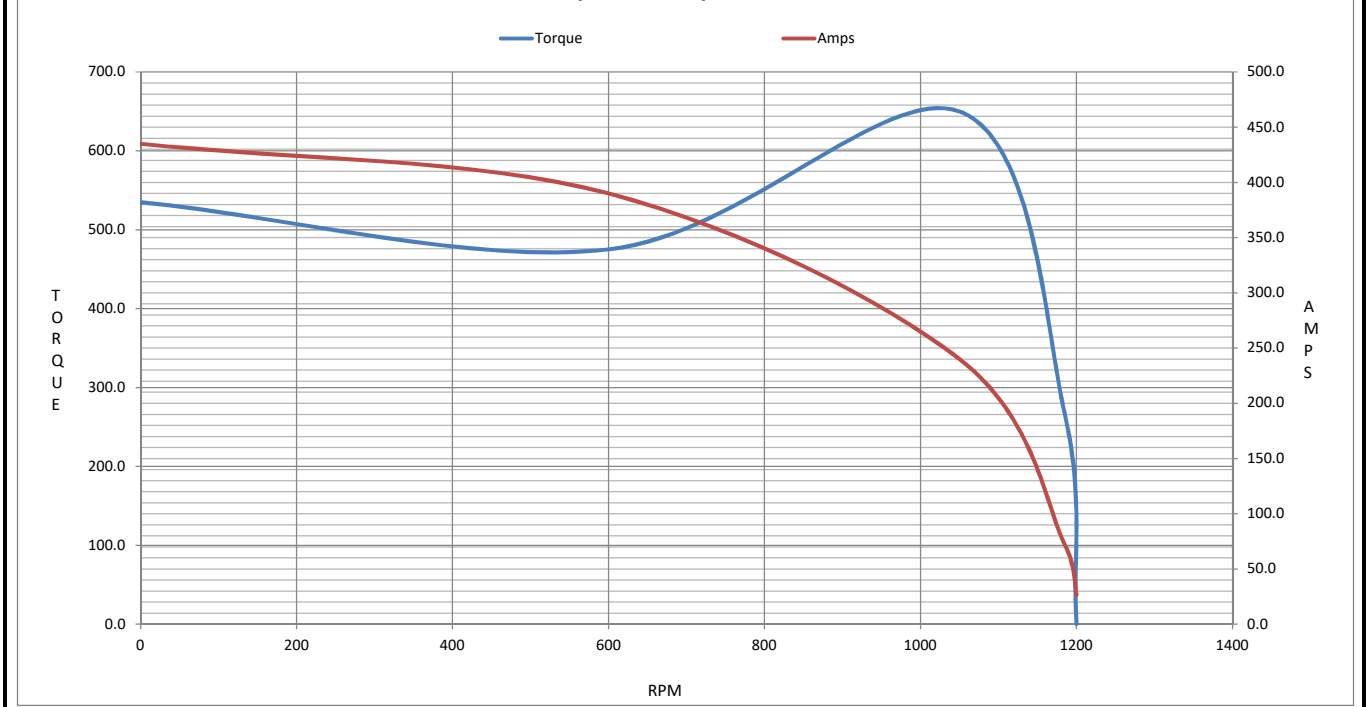
Motor Speed Data

	LR	Pull-Up	BD	Rated	Idle
Speed (RPM)	0	600	1050	1185	1200
Current (Amps)	435	390	240	72.0	26.5
Torque (ft-lb)	535	475	650	266	0.00

Information Block				
HP	60.0			
Sync. RPM	1200			
Frame	404			
Enclosure	TEAO			
Construction	TTS			
Voltage	230/460#190/380 V			
Frequency	60 Hz			
Design	B			
LR Code letter	G			
Service Factor	1.15			
Temp Rise @ FL	0 °C			
Duty	CONT			
Ambient	40 °C			
Elevation	1,000 feet			
Rotor/Shaft wk ²	33.5 Lb-Ft ²			
Ref Wdg	T404640 R8			
Sound Pressure @ 1M	999 dBA			
VFD Rating	VARIABLE 10:1			
Outline Dwg	B-SS555787LE-1675			
Conn. Diag	A-EE7308AD-LE			
Additional Specifications:				
0				
0				
EQUIV CKT (OHMS / PHASE)				
R1	R2	X1	X2	Xm
0.0710	0.0430	0.3940	0.5270	9.5450



Speed - Torque Curve



EC Declaration of Conformity

The undersigned representing
the manufacturer:

Regal Beloit America
100 East Randolph St.
Wausau, WI 54401

and the authorized representative
established within the Community:

Marathon Electric UK
6F Thistleton Road Ind. Estate
Market Overton
Oakham, Rutland LE15 7PP UK

are committed to providing customers with products that comply with applicable regulations and international protocols to which they are subject, including the requirements of the European Parliament Directive on the Harmonization of the laws relating to electrical equipment designed for use within certain voltage limits (2014/35/EU).

Regal Beloit America declares that the following product(s), to which this declaration relates, are in conformity with the relevant sections of the EC standards listed below.

This statement supersedes any statements previously issued pertaining to the product(s) listed below and is subject to change without notice.

Model No : 824564.00

(Model No. may contain prefix and/or suffix characters)

Catalog No : 824564.00

Rework No : N/A

Directives :

Low Voltage Directive 2014/35/EU

Harmonized Standards Used :

EN 60034-1: 2010 (IEC 60034-1: 2010)

EN 60034-5: 2001/A1:2007 (IEC 60034-5: 2000/A1:2006)

Authorized Representative:



Michael A. Logsdon
Vice President, Technology

Authorized Representative in the Community:



Julian Clark
Marketing Engineer

Created on 09/01/2022

CE 22