

PRODUCT INFORMATION PACKET



Model No: 824528.00

Catalog No: 824528.00

Severe Duty Motor, 3 HP, 3 Ph, 60 Hz, 230/460 V, 1800 RPM, 182T Frame, TEAO



Regal and Leeson are trademarks of Regal Rexnord Corporation or one of its affiliated companies.

©2022 Regal Rexnord Corporation, All Rights Reserved. MC017097E



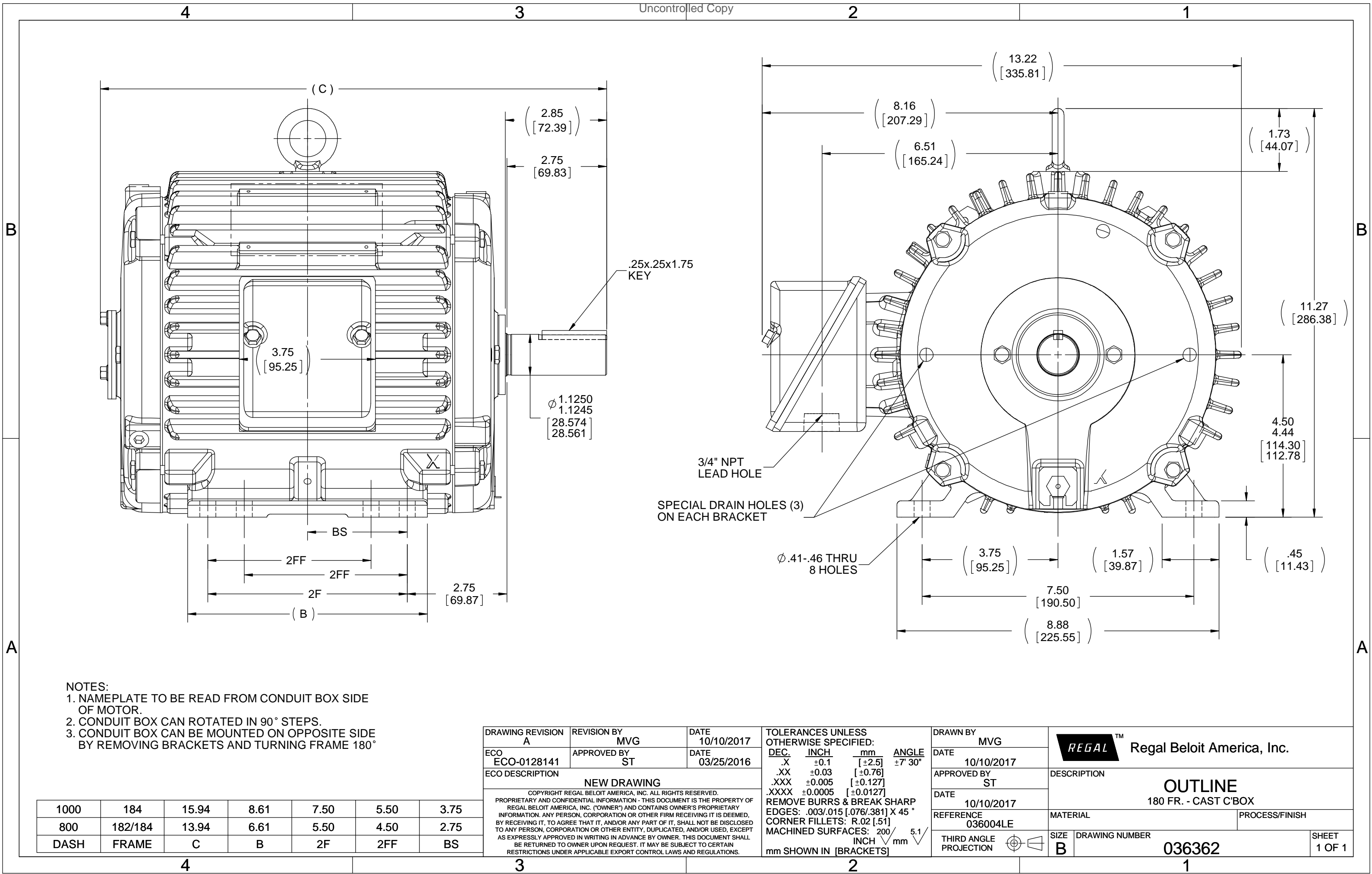


Nameplate Specifications

Output HP	3 Hp	Output KW	2.2 kW
Frequency	60 Hz	Voltage	230/460 V
Current	8.0/4.0 A	Speed	1760 rpm
Service Factor	1.15	Phase	3
Efficiency	90.2 %	Power Factor	80
Duty	Continuous	Insulation Class	F
Design Code	B	KVA Code	K
Frame	182T	Enclosure	Totally Enclosed Air Over
Thermal Protection	No Protection	Ambient Temperature	40 °C
Drive End Bearing Size	6206	Opp Drive End Bearing Size	6206
UL	No	CSA	N
CE	N	IP Code	55
Number of Speeds	1		

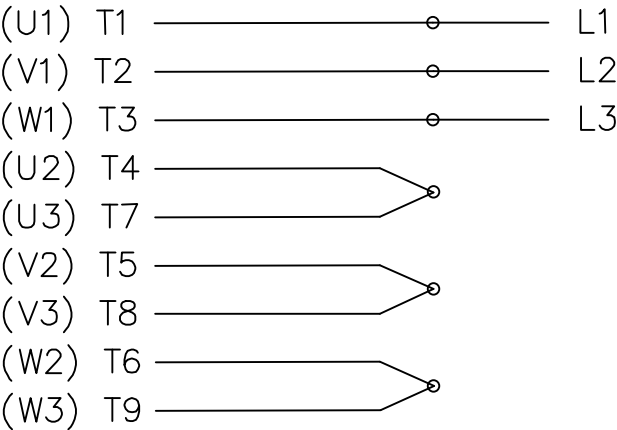
Technical Specifications

Electrical Type	Squirrel Cage Inverter Rated	Starting Method	Line Or Inverter
Poles	4	Rotation	Reversible
Resistance Main	3.76 Ohms	Mounting	Rigid Base
Motor Orientation	Horizontal	Drive End Bearing	Ball
Opp Drive End Bearing	Ball	Frame Material	Cast Iron
Shaft Type	T	Overall Length	13.82 in
Frame Length	8.00 in	Shaft Diameter	1.125 in
Shaft Extension	2.75 in	Assembly/Box Mounting	F1/F2 CAPABLE
Inverter Load	VARIABLE 10:1		
Connection Drawing	A-EE7308-LE	Outline Drawing	036362-800

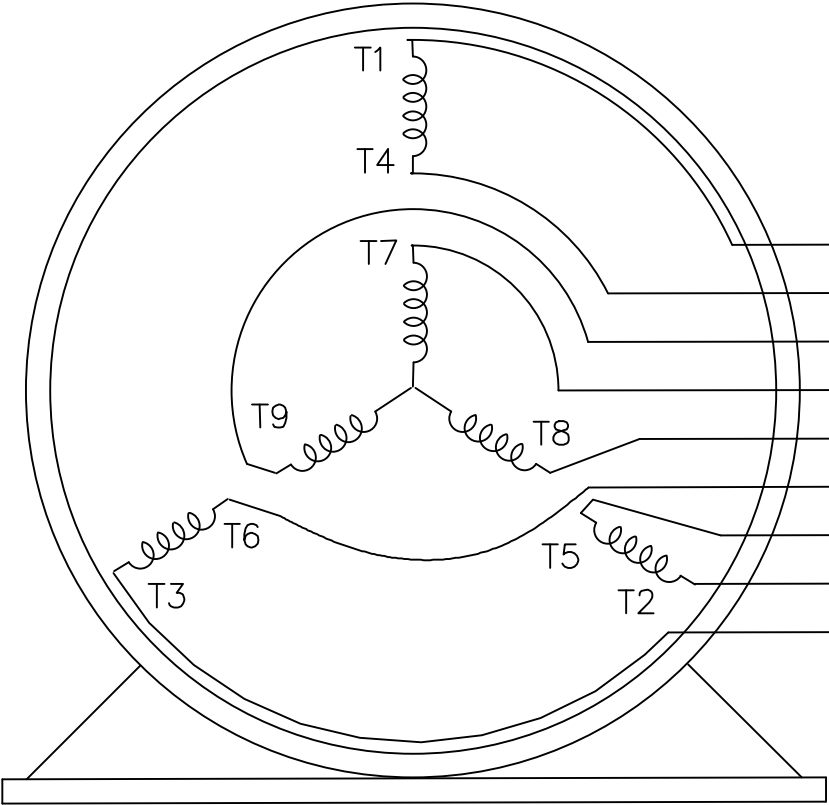
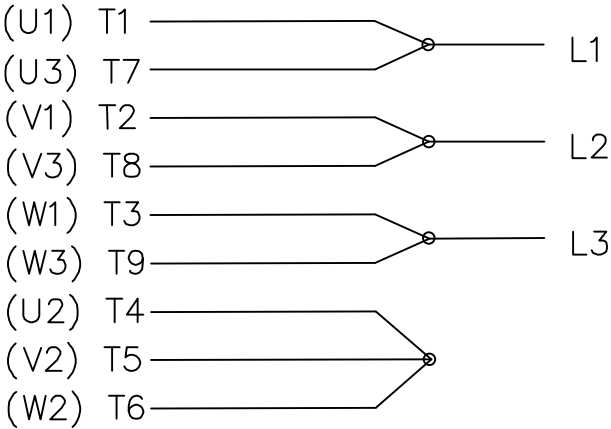


THREE PHASE
DUAL VOLTAGE MOTOR

HIGH VOLTAGE



LOW VOLTAGE




T1 (U1)
T4 (U2)
T9 (W3)
T7 (U3)
T8 (V3)
T6 (W2)
T5 (V2)
T2 (V1)
T3 (W1)

VIEW OF TERMINAL END

REF.
WINDING DIAGRAM

T8Y, T2Y, T2BL, T4BX, T2EC, T2G
T6BZ, T2B, T6BL, T4AV, T6B, T4B

				TOLERANCES UNLESS SPECIFIED			ELECTRIC MOTORS GEARMOTORS AND DRIVES			DRAWN HLB 04-29-2002					
				DEC.	INCHES					CHK	ML	05-03-2002			
				.X	±.1					TITLE CONNECTION DIAGRAM 3Ø – DUAL VOLTAGE MOTOR			APPD	GK	05-03-2002
				.XX	±.01								SCALE	1=1	
2	ADDED IEC NOTATIONS... (U1), (V1) ETC. (MU105786)	REP 01-11-2012	DR	.XXX	±.005	MAT'L.			REF						
1	NEW DRAWING	HLB 05-03-2002	ML	.XXXX	±.0005				FMF						
NO.	REVISION	BY & DATE	CHK	ANG	±1/2'	FINISH			PREV						
THIS DRAWING IN DESIGN AND DETAIL IS OUR PROPERTY AND MUST NOT BE USED EXCEPT IN CONNECTION WITH OUR WORK ALL RIGHTS OF DESIGN AND INVENTION ARE RESERVED THIS IS AN ELECTRONICALLY GENERATED DOCUMENT – DO NOT SCALE THIS PRINT			RFP			CAD FILE EE7308-LE			SIZE	DRAWING NO.	PAGE	OF	REV.		
			DIST LB-WP						A	EE7308-LE				2	

Data Sheet

Date: 2/1/2018

824528.00



Data @ 460 V

Motor Load Data

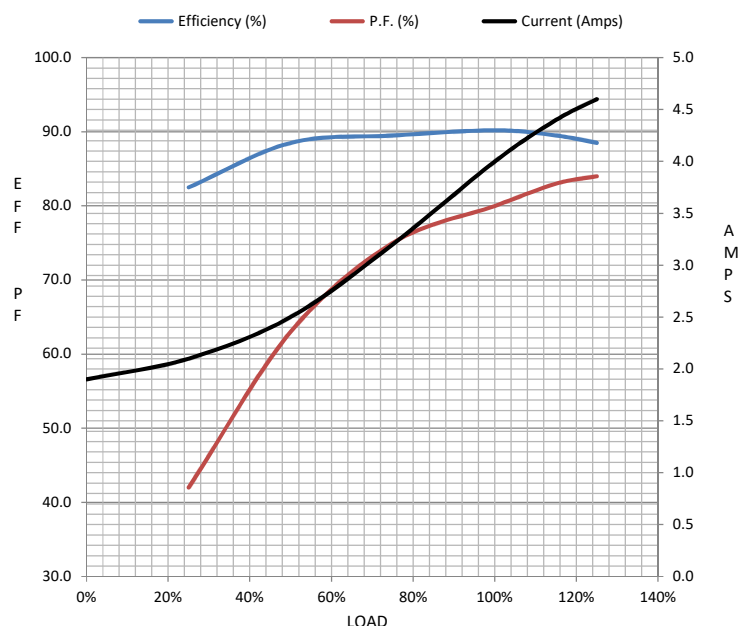
Load	0%	25%	50%	75%	100%	115%	125%	LR	
Current (Amps)	1.90	2.10	2.50	3.2	4.0	4.4	4.6	32.0	
Torque (ft-lb)	0.00	2.20	4.4	6.7	9.0	10.4	11.2	22.5	
RPM	1800	1790	1780	1770	1760	1,755	1750	0	
Efficiency (%)		82.5	88.5	89.5	90.2	89.5	88.5		
P.F. (%)	6.5	42.0	63.0	75.0	80.0	83.0	84.0	47.0	

Motor Speed Data

	LR	Pull-Up	BD	Rated	Idle
Speed (RPM)	0	750	1500	1760	1800
Current (Amps)	32.0	30.0	23.0	4.0	1.90
Torque (ft-lb)	22.5	20.0	35.0	9.0	0.00

Information Block

HP	3.0			
Sync. RPM	1800			
Frame	182			
Enclosure	TEAO			
Construction	TTS			
Voltage	230/460 V			
Frequency	60 Hz			
Design	B			
LR Code letter	K			
Service Factor	1.15			
Temp Rise @ FL	0 °C			
Duty	CONT AOM			
Ambient	40 °C			
Elevation	1,000 feet			
Rotor/Shaft wk²	0.40 Lb-Ft²			
Ref Wdg	K1824116 R21			
Sound Pressure @ 1M	999 dBA			
VFD Rating	VARIABLE 10:1			
Outline Dwg	036004LE-800			
Conn. Diag	A-EE7308-LE			
Additional Specifications:				
0				
0				
EQUIV CKT (OHMS / PHASE)				
R1	R2	X1	X2	Xm
2.3630	1.6070	5.1030	7.9380	130.4100



Speed - Torque Curve

