

PRODUCT INFORMATION PACKET

Model No: 811635.00

Catalog No: 811635.00

Speed Ratio Motors, TENV, 25 HP, 3 Ph, 60 Hz, 230/460 V, 1770 RPM, 284TC Frame



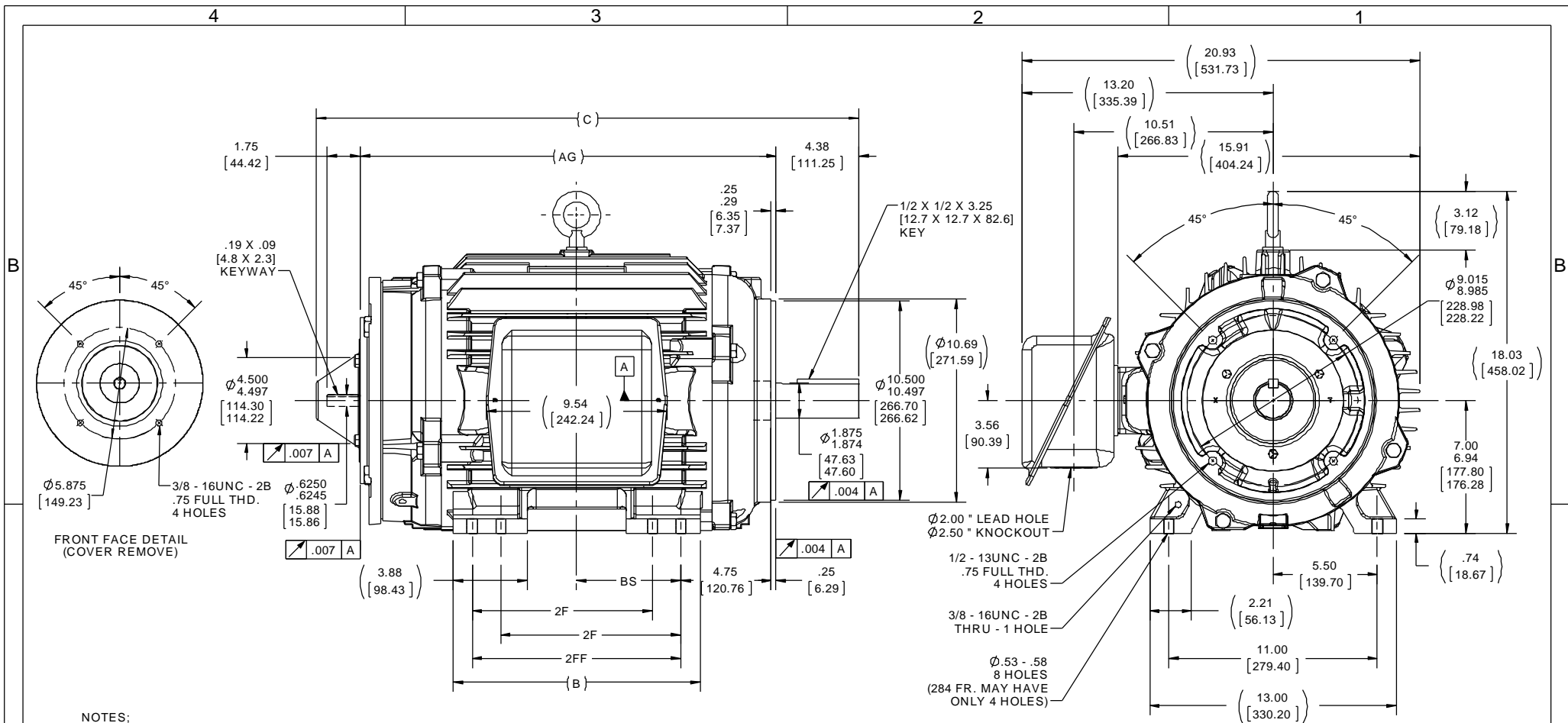
Regal and are trademarks of Regal Rexnord Corporation or one of its affiliated companies.
©2022 Regal Rexnord Corporation, All Rights Reserved. MC017097E

Nameplate Specifications

Output HP	25 Hp	Output KW	18.7 kW
Frequency	60 Hz	Voltage	230/460 V
Current	62.0/31.0 A	Speed	1770 rpm
Service Factor	1	Phase	3
Efficiency	93.6 %	Power Factor	80
Duty	Continuous	Insulation Class	F
Design Code	INV	KVA Code	K
Frame	284TC	Enclosure	Totally Enclosed Non Ventilated
Thermal Protection	Thermostat	Ambient Temperature	40 °C
Drive End Bearing Size	6311	Opp Drive End Bearing Size	6311
UL	Recognized	CSA	Y
CE	Y	IP Code	43
Number of Speeds	1		

Technical Specifications

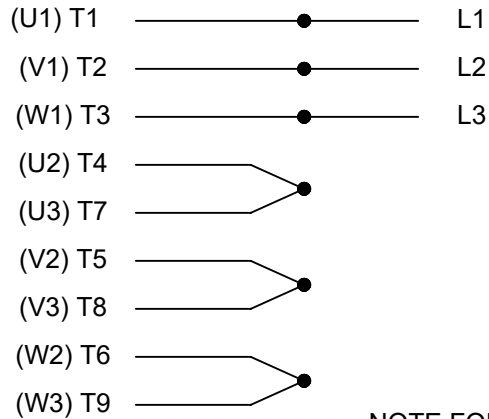
Electrical Type	Squirrel Cage Inverter Duty	Starting Method	Inverter Only
Poles	4	Rotation	Reversible
Resistance Main	.2 Ohms	Mounting	Rigid Base
Motor Orientation	Horizontal	Drive End Bearing	Ball
Opp Drive End Bearing	Ball	Frame Material	Cast Iron
Shaft Type	T	Overall Length	27.08 in
Frame Length	12.75 in	Shaft Diameter	1.875 in
Shaft Extension	4.63 in	Assembly/Box Mounting	F1/F2 CAPABLE
Inverter Load	CONSTANT 1000:1		
Connection Drawing	A-EE7308T	Outline Drawing	B-SS311154-1275



- NOTES:
1. C'BOX CAN BE ROTATED IN 90° STEPS.
 2. C'BOX CAN BE MOUNTED ON OPPOSITE SIDE BY REMOVING BRACKETS AND TURNING FRAME 180°.
 3. NAMEPLATE TO BE READ FROM C'BOX SIDE OF MOTOR.

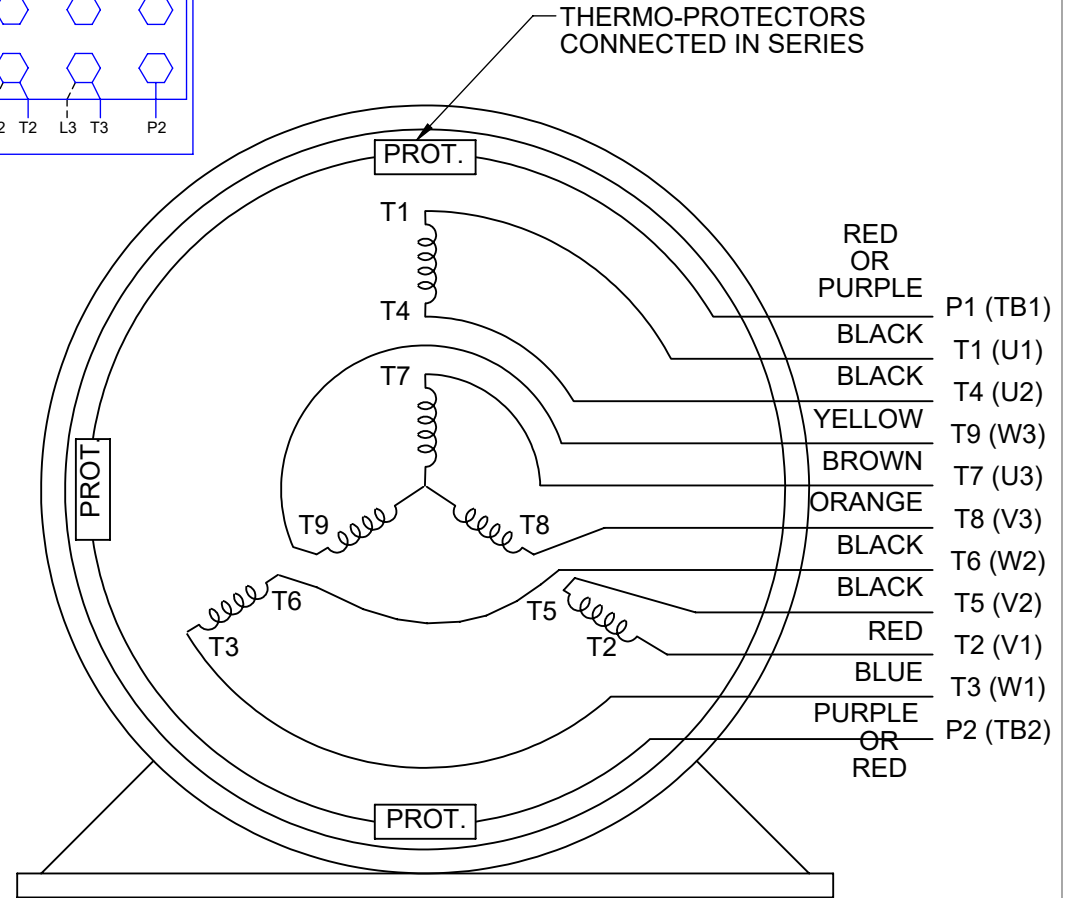
DRAWING REVISION								REVISION BY			DATE			TOLERANCES UNLESS OTHERWISE SPECIFIED:				DRAWN BY		REGAL™ Regal Beloit America, Inc.	
E								TVUE			12-03-2013			DEC. INCH mm ANGLE				MSG		REGAL™ Regal Beloit America, Inc.	
ECO								APPROVED BY			DATE			.X ±0.1 [±2.5] ±7° 30°				DATE		DESCRIPTION	
MU115852								TBROWN			12-04-2013			.XX ±0.03 [±0.76]				04-30-2001		OUTLINE	
ECO DESCRIPTION								UPDATED FRAME AND TITLE BLOCK			.XXX ±0.005 [±0.127]				APPROVED BY		280TC FR. - TENV - C'FACE - 12.50 LAM.				
COPYRIGHT REGAL BELOIT AMERICA, INC. ALL RIGHTS RESERVED. PROPRIETARY AND CONFIDENTIAL INFORMATION. THIS DOCUMENT IS THE PROPERTY OF REGAL BELOIT AMERICA, INC. (OWNER) AND CONTAINS OWNER'S PROPRIETARY INFORMATION. ANY PERSON, CORPORATION OR OTHER FIRM RECEIVING IT IS DEEMED, BY RECEIVING IT, TO AGREE THAT IT, AND/OR ANY PART OF IT, SHALL NOT BE DISCLOSED TO ANY PERSON, CORPORATION OR OTHER ENTITY, DUPLICATED, AND/OR USED, EXCEPT AS EXPRESSLY APPROVED IN WRITING IN ADVANCE BY OWNER. THIS DOCUMENT SHALL BE RETURNED TO OWNER UPON REQUEST. IT MAY BE SUBJECT TO CERTAIN RESTRICTIONS UNDER APPLICABLE EXPORT CONTROL LAWS AND REGULATIONS.											REMOVE BURRS & BREAK SHARP EDGES: .003/.015 [0.076/.381]				TBROWN		MATERIAL				
											CORNER FILLETS: .02 [51]				DATE		280TC FR. - TENV - C'FACE - 12.50 LAM.				
											MACHINED SURFACES: 200 INCH/mm√5.1				05-03-2001		280TC FR. - TENV - C'FACE - 12.50 LAM.				
											mm SHOWN IN [BRACKETS]				PROCESS/FINISH		MATERIAL				
															MU115852						
															THIRD ANGLE PROJECTION		DRAWING NUMBER				
															B		SS311154				
																	SHEET 1 OF 1				
DASH	FRAME	B	C	2F	2FF	BS	AG														
1275	284TC	12.50 [317.5]	27.08 [687.83]	---	9.50 [241.3]	4.75 [120.65]	20.40 [518.16]														
1425	284TC / 286TC	13.00 [330.2]	28.58 [725.93]	9.50 [241.3]	11.00 [279.4]	5.50 [139.7]	21.90 [556.26]														

HIGH VOLTAGE



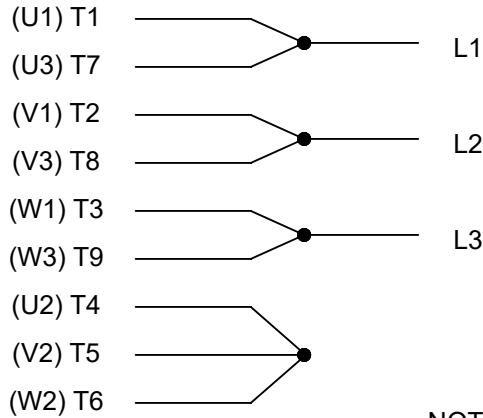
**THREE PHASE
DUAL VOLTAGE MOTOR**

THERMO-PROTECTORS
CONNECTED IN SERIES



NOTE FOR FACTORY USE ONLY:
TO SURGE TEST FOR COMMON CONNECT:
HIGH VOLT: CONNECT P1 TO T1
THEN P2 TO L1
LOW VOLT: CONNECT P1 TO T1 & T7,
THEN P2 TO L1

LOW VOLTAGE



VIEW OF TERMINAL END

NOTE: LEAD'S COLOR CAN BE YELLOW OR WHITE FOR MT2 PLANT

DRAWING REVISION T	REVISION BY ZR	DATE 01-14-2019		DRAWN BY SMC	Regal Beloit America, Inc.
ECO ECO-0159915	APPROVED BY DR	DATE 01-15-2019		DATE 05-13-1992	
ECO DESCRIPTION ADDED TERMINAL CONNECTION DIAGRAM				APPROVED BY TB	DESCRIPTION CONN DIAGRAM-INTERNAL 3 PHASE - DUAL VOLTAGE MOTOR
<small>COPYRIGHT REGAL BELOIT AMERICA, INC. ALL RIGHTS RESERVED. PROPRIETARY AND CONFIDENTIAL INFORMATION - THIS DOCUMENT IS THE PROPERTY OF REGAL BELOIT AMERICA, INC. ("OWNER") AND CONTAINS OWNER'S PROPRIETARY INFORMATION. ANY PERSON, CORPORATION OR OTHER FIRM RECEIVING IT IS DEEMED, BY RECEIVING IT, TO AGREE THAT IT, AND/OR ANY PART OF IT, SHALL NOT BE DISCLOSED TO ANY PERSON, CORPORATION OR OTHER ENTITY, DUPLICATED, AND/OR USED, EXCEPT AS EXPRESSLY APPROVED IN WRITING IN ADVANCE BY OWNER. THIS DOCUMENT SHALL BE RETURNED TO OWNER UPON REQUEST. IT MAY BE SUBJECT TO CERTAIN RESTRICTIONS UNDER APPLICABLE EXPORT CONTROL LAWS AND REGULATIONS.</small>				DATE 05-13-1992	MATERIAL
			REFERENCE EE7308/EE7300	THIRD ANGLE PROJECTION	SIZE A



1051 CHEYENNE AVE.
GRAFTON, WI 53024
PH. 262-277-8810

DATA VOLTS: 460

CERTIFICATION DATA SHEET

CONN. DIAGRAM: A-EE7308T
OUTLINE: B-SS311154-1275
WINDING: K2844139

CAT #: 811635.00

R2 1

TYPICAL MOTOR PERFORMANCE DATA

HP	KW	SYNC RPM	FL RPM	FRAME	ENCLOSURE	TYPE	KVA CODE	DESIGN
25	18.7	1800	1770	284TC	TENV	TTN	K	INF

PH	HZ	VOLTS	AMPS	START TYPE	DUTY	INSL	S.F.	AMB	ELEV.
3	60	230/460	62/31	INVERTER ONLY	CONT	F	1.15	40	3300

F.L. EFF	93.6	3/4 LD EFF	94.1	1/2 LD EFF	93.0	GTD EFF	ELECT. TYPE
F.L. PF	80.0	3/4 LD PF	74.0	1/2 LD PF	62.0	92.4	SQ CAGE INV DUTY

F.L. TORQUE	LR AMPS @ 460 V	L.R. TORQUE	B.D. TORQUE	F.L. RISE (° C)
74.2 LB-FT	280	163 LB-FT 220%	330 LB-FT 445%	96

PRESSURE @ 3	SOUND	POWER	ROTOR WK²	MAX. LOAD WK²	SAFE STALL TIME	STARTS/HOUR	MOTOR WGT
62 dBA	71 dBA		4.4 LB-FT²	0 LB-FT²	0 SEC.	0	475 LB.

***** SUPPLEMENTAL INFORMATION *****

DE BRACKET TYPE	ODE BRACKET TYPE	MOUNT TYPE	MOTOR ORIENTATION	SEVERE DUTY	HAZARDOUS LOCATION	DRIP COVER	SCREENS	PAINT
C-FACE	BRAKE OR ENCODER	RIGID	HORIZONTAL	NO	NONE	NO	NONE	WATTSaver

BEARINGS		GREASE	SHAFT TYPE	SPECIAL DE	SPECIAL ODE	SHAFT MATERIAL	FRAME MATERIAL
DE	ODE	POLYREX EM	T	NONE	NONE	1045 HOT ROLLED (C-204)	CAST IRON
BALL	BALL						
6311	6311						

THERMOSTATS	PROTECTORS	WDG RTD's	BRG RTD's	THERMISTORS	CONTROL	SPACE HEATERS
TSTATS (N/C)	NOT	NONE	NONE	NONE	FALSE	NA

R1 (ohms/ph)	R2 (ohms/ph)	X1 (ohms/ph)	X2 (ohms/ph)	Xm (ohms/ph)	VIBRATION (in/sec)	FLOAT
0.143	0.16	0.724	0.678	13.965	0.150	ODE

* N O T E S *	INVERTER TORQUE: CONSTANT 1000:1 INV. HP SPEED RANGE: 2.0 X BASE SPEED	
	ENCODER: NORTHSTAR ST56 NONE	
	BRAKE: STEARNS 56,000 NONE	
	FT-LB: 10 VOLTAGE: NONE	
	NONE PPR	

DATE:	9/10/2018	UL: Y-(LEESON UL REC)
-------	-----------	-----------------------

Data Sheet

Date: 9/10/2018

811635.00



Data @ **460 V**

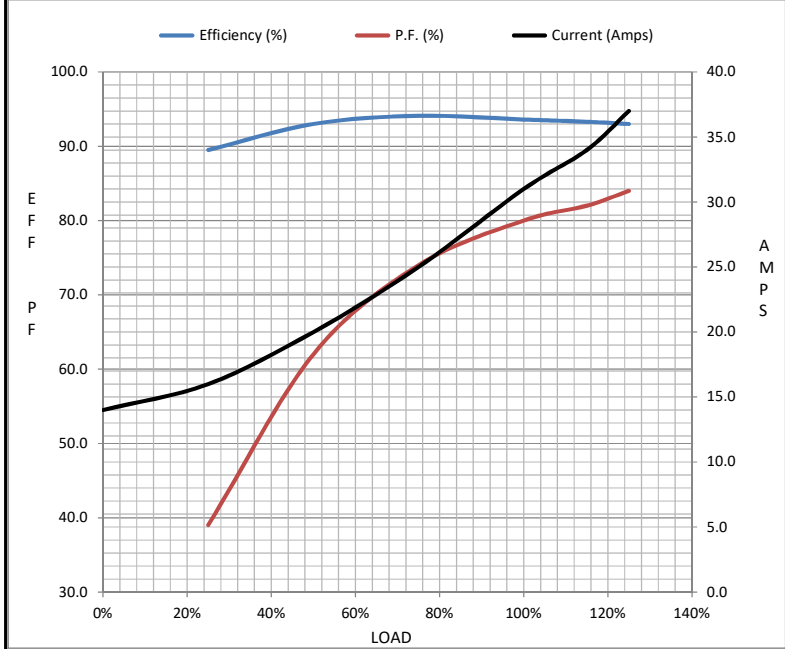
Motor Load Data

Load	0%	25%	50%	75%	100%	115%	125%	LR
Current (Amps)	14.0	16.0	20.0	25.0	31.0	34.0	37.0	280
Torque (ft-lb)	0.00	18.5	36.8	55.5	74.2	83.7	93.2	163
RPM	1800	1792	1785	1778	1770	1,766	1760	0
Efficiency (%)		89.5	93.0	94.1	93.6	93.3	93.0	
P.F. (%)	3.0	39.0	62.0	74.0	80.0	82.0	84.0	31.0

Motor Speed Data

	LR	Pull-Up	BD	Rated	Idle
Speed (RPM)	0	900	1585	1770	1800
Current (Amps)	280	250	180	31.0	14.0
Torque (ft-lb)	163	125	330	74.2	0.00

Information Block				
HP	25.0			
Sync. RPM	1800			
Frame	284			
Enclosure	TENV			
Construction	TTN			
Voltage	230/460 V			
Frequency	60 Hz			
Design	A			
LR Code letter	K			
Service Factor	1.0			
Temp Rise @ FL	96 ° C			
Duty	CONT			
Ambient	40 ° C			
Elevation	1,000 feet			
Rotor/Shaft wk ²	4.4 Lb-Ft ²			
Ref Wdg	K2844139 R2			
Sound Pressure @ 1M	62 dBA			
VFD Rating	CONSTANT 1000:1			
Outline Dwg	B-SS311154-1275			
Conn. Diag	A-EE7308T			
Additional Specifications:				
0				
0				
EQUIV CKT (OHMS / PHASE)				
R1	R2	X1	X2	Xm
0.1430	0.1600	0.7240	0.6780	13.9650



Speed - Torque Curve

