

PRODUCT INFORMATION PACKET

Model No: 811618.00

Catalog No: 811618.00

Speed Ratio Motors, TENV, 2 HP, 3 Ph, 60 Hz, 230/460 V, 1160 RPM, 184TC Frame



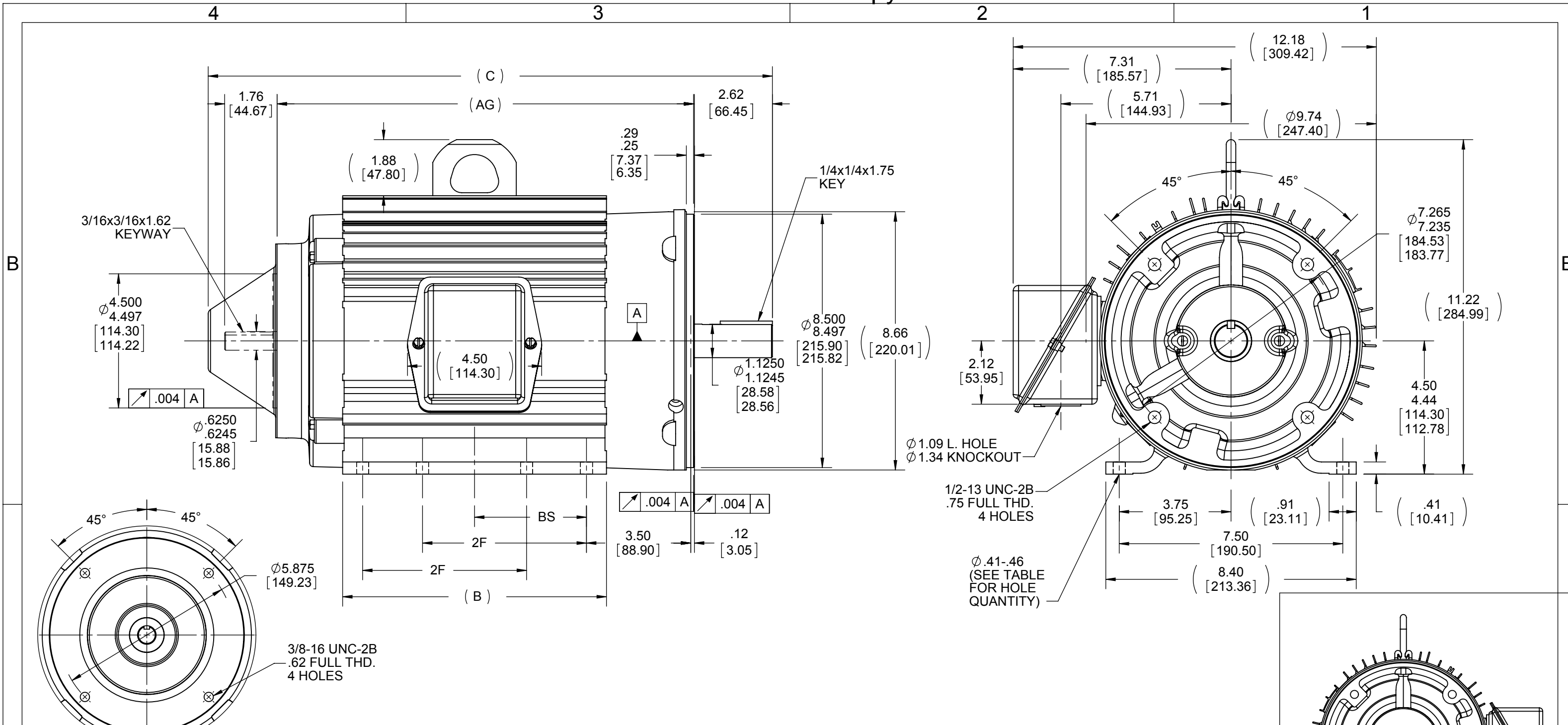
Regal and are trademarks of Regal Rexnord Corporation or one of its affiliated companies.
©2022 Regal Rexnord Corporation, All Rights Reserved. MC017097E

Nameplate Specifications

Output HP	2 Hp	Output KW	1.5 kW
Frequency	60 Hz	Voltage	230/460 V
Current	6.6/3.3 A	Speed	1160 rpm
Service Factor	1	Phase	3
Efficiency	82.5 %	Power Factor	67.5
Duty	Continuous	Insulation Class	F
Design Code	INV	KVA Code	L
Frame	184TC	Enclosure	Totally Enclosed Non Ventilated
Thermal Protection	No Protection	Ambient Temperature	40 °C
Drive End Bearing Size	6207	Opp Drive End Bearing Size	6206
UL	Recognized	CSA	Y
CE	Y	IP Code	43
Number of Speeds	1		

Technical Specifications

Electrical Type	Squirrel Cage Inverter Duty	Starting Method	Inverter Only
Poles	6	Rotation	Reversible
Resistance Main	6.45 Ohms	Mounting	Rigid Base
Motor Orientation	Horizontal	Drive End Bearing	Ball
Opp Drive End Bearing	Ball	Frame Material	Aluminum
Shaft Type	T	Overall Length	16.93 in
Frame Length	6.75 in	Shaft Diameter	1.125 in
Shaft Extension	2.75 in	Assembly/Box Mounting	F1/F2 CAPABLE
Outline Drawing	B-SS68967-675A	Connection Drawing	EE7308T



- NOTES:
 1- C'BOX CAN BE ROTATED IN 90° STEPS.
 2- C'BOX CAN BE MOUNTED ON OPPOSITE SIDE BY REMOVING BRACKETS AND TURNING FRAME 180°.
 3- NAMEPLATE TO BE READ FROM C'BOX SIDE OF MOTOR.

575	182TC	15.93	11.00	5.85	4.50	2.25	8	F1 OR F2
675	182TC	16.93	12.00	6.85	4.50	2.75	8	F1 OR F2
675	184TC	16.93	12.00	6.85	4.50	2.75	8	F1 OR F2
675A	184TC	16.93	12.00	6.85	5.50	2.75	4	F1 OR F2
720	182TC	17.38	12.45	7.30	4.50	2.98	8	F1 OR F2
720	182TC	17.38	12.45	7.30	4.50	2.98	4	F1 ONLY
775	184TC	17.93	13.00	7.85	5.50	3.25	8	F1 OR F2
875	182TC	18.93	14.00	8.85	4.50	3.75	8	F1 OR F2
875	184TC	18.93	14.00	8.85	5.50	3.75	8	F1 OR F2
925	184TC	19.43	14.50	9.35	5.50	4.00	8	F1 OR F2
DASH	FRAME	C	AG	B	2F	BS	FOOT HOLES	MTG.

DRAWING REVISION H	REVISION BY SAI	DATE 04/04/2014
ECO ECO-0048883	APPROVED BY SR	DATE 04/04/2014
ECO DESCRIPTION DASH 675 ADDED-184TC		
<small>COPYRIGHT REGAL BELOIT AMERICA, INC. ALL RIGHTS RESERVED. PROPRIETARY AND CONFIDENTIAL INFORMATION - THIS DOCUMENT IS THE PROPERTY OF REGAL BELOIT AMERICA, INC. ("OWNER") AND CONTAINS OWNER'S PROPRIETARY INFORMATION. ANY PERSON, CORPORATION OR OTHER FIRM RECEIVING IT IS DEEMED, BY RECEIVING IT, TO AGREE THAT IT, AND/OR ANY PART OF IT, SHALL NOT BE DISCLOSED TO ANY PERSON, CORPORATION OR OTHER ENTITY, DUPLICATED, AND/OR USED, EXCEPT AS EXPRESSLY APPROVED IN WRITING IN ADVANCE BY OWNER. THIS DOCUMENT SHALL BE RETURNED TO OWNER UPON REQUEST. IT MAY BE SUBJECT TO CERTAIN RESTRICTIONS UNDER APPLICABLE EXPORT CONTROL LAWS AND REGULATIONS.</small>		

TOLERANCES UNLESS OTHERWISE SPECIFIED:			
DEC.	INCH	mm	ANGLE
.X	±0.1	[±2.5]	±7° 30"
.XX	±0.03	[±0.76]	
.XXX	±0.005	[±0.127]	
.XXXX	±0.0005	[±0.0127]	
REMOVE BURRS & BREAK SHARP EDGES: .003/.015 [0.076/.381] CORNER FILLETS: .02 [0.51] MACHINED SURFACES: 200 INCH/mm 5.1 mm SHOWN IN [BRACKETS]			

DRAWN BY CAV
DATE 06-23-2000
APPROVED BY GK
DATE 06-23-2000
PROCESS/FINISH
THIRD ANGLE PROJECTION

REGAL ™ Regal Beloit America, Inc.	
DESCRIPTION	OUTLINE
MATERIAL	
SIZE B	DRAWING NUMBER SS68967
	SHEET 1 OF 1

HIGH VOLTAGE



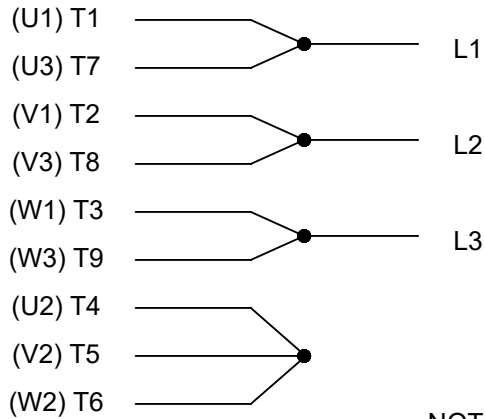
**THREE PHASE
DUAL VOLTAGE MOTOR**

THERMO-PROTECTORS
CONNECTED IN SERIES



NOTE FOR FACTORY USE ONLY:
TO SURGE TEST FOR COMMON CONNECT:
HIGH VOLT: CONNECT P1 TO T1
THEN P2 TO L1
LOW VOLT: CONNECT P1 TO T1 & T7,
THEN P2 TO L1

LOW VOLTAGE



VIEW OF TERMINAL END

NOTE: LEAD'S COLOR CAN BE YELLOW OR WHITE FOR MT2 PLANT

DRAWING REVISION T	REVISION BY ZR	DATE 01-14-2019		DRAWN BY SMC	Regal Beloit America, Inc.
ECO ECO-0159915	APPROVED BY DR	DATE 01-15-2019		DATE 05-13-1992	
ECO DESCRIPTION ADDED TERMINAL CONNECTION DIAGRAM				APPROVED BY TB	DESCRIPTION CONN DIAGRAM-INTERNAL 3 PHASE - DUAL VOLTAGE MOTOR
<small>COPYRIGHT REGAL BELOIT AMERICA, INC. ALL RIGHTS RESERVED. PROPRIETARY AND CONFIDENTIAL INFORMATION - THIS DOCUMENT IS THE PROPERTY OF REGAL BELOIT AMERICA, INC. ("OWNER") AND CONTAINS OWNER'S PROPRIETARY INFORMATION. ANY PERSON, CORPORATION OR OTHER FIRM RECEIVING IT IS DEEMED, BY RECEIVING IT, TO AGREE THAT IT, AND/OR ANY PART OF IT, SHALL NOT BE DISCLOSED TO ANY PERSON, CORPORATION OR OTHER ENTITY, DUPLICATED, AND/OR USED, EXCEPT AS EXPRESSLY APPROVED IN WRITING IN ADVANCE BY OWNER. THIS DOCUMENT SHALL BE RETURNED TO OWNER UPON REQUEST. IT MAY BE SUBJECT TO CERTAIN RESTRICTIONS UNDER APPLICABLE EXPORT CONTROL LAWS AND REGULATIONS.</small>				DATE 05-13-1992	MATERIAL
			REFERENCE EE7308/EE7300	SIZE A	DRAWING NUMBER EE7308T



1051 CHEYENNE AVE.
GRAFTON, WI 53024
PH. 262-277-8810

DATA VOLTS: 460

CERTIFICATION DATA SHEET

CONN. DIAGRAM: EE7308T
OUTLINE: B-SS68967-675A
WINDING: K184656

CAT #: 811618.00

NONE 1

TYPICAL MOTOR PERFORMANCE DATA

HP	KW	SYNC RPM	FL RPM	FRAME	ENCLOSURE	TYPE	KVA CODE	DESIGN
2	1.5	1200	1160	184TC	TENV	TTL	L	INF

PH	HZ	VOLTS	AMPS	START TYPE	DUTY	INSL	S.F.	AMB	ELEV.
3	60	230/460	6.6/3.3	INVERTER ONLY	CONT	F	1.15	40	3300

F.L. EFF	82.5	3/4 LD EFF	82.5	1/2 LD EFF	80.0	GTD EFF	ELECT. TYPE
F.L. PF	67.5	3/4 LD PF	59.5	1/2 LD PF	47.0	80.0	SQ CAGE INV DUTY

F.L. TORQUE	LR AMPS @ 460 V	L.R. TORQUE	B.D. TORQUE	F.L. RISE (° C)
9.1 LB-FT	23.5	21.0 LB-FT 231%	34.0 LB-FT 374%	70

PRESSURE @ 3	SOUND	POWER	ROTOR WK²	MAX. LOAD WK²	SAFE STALL TIME	STARTS/HOUR	MOTOR WGT
60 dBA	69 dBA		0.38 LB-FT²	0 LB-FT²	0 SEC.	0	90 LB.

***** SUPPLEMENTAL INFORMATION *****

DE BRACKET TYPE	ODE BRACKET TYPE	MOUNT TYPE	MOTOR ORIENTATION	SEVERE DUTY	HAZARDOUS LOCATION	DRIP COVER	SCREENS	PAINT
C-FACE	BRAKE OR ENCODER	RIGID	HORIZONTAL	NO	NONE	NO	NONE	WATTSAVER

BEARINGS		GREASE	SHAFT TYPE	SPECIAL DE	SPECIAL ODE	SHAFT MATERIAL	FRAME MATERIAL
DE	ODE	POLYREX EM	T	NONE	NONE	1144 STRESSPROOF (C-223)	ALUMINUM
BALL	BALL						
6207	6206						

THERMOSTATS	PROTECTORS	WDG RTD's	BRG RTD's	THERMISTORS	CONTROL	SPACE HEATERS
TSTATS (N/C)	NOT	NONE	NONE	NONE	FALSE	NA

R1 (ohms/ph)	R2 (ohms/ph)	X1 (ohms/ph)	X2 (ohms/ph)	Xm (ohms/ph)	VIBRATION (in/sec)	FLOAT
3.948	3.436	7.725	12.113	116.866	0.150	ODE

* N O T E S *	INVERTER TORQUE: CONSTANT 1000:1 INV. HP SPEED RANGE: 2.0 X BASE SPEED					
	ENCODER: NONE NONE NONE					
	BRAKE: NONE NONE NONE					
	NONE PPR					
	NONE					

DATE:	9/10/2018	BRAKE: NONE NONE NONE				NONE	
		FT-LB:		NA			
		VOLTAGE:		NONE		HZ:	
UL: Y-(LEESON UL REC)							

Data Sheet

Date: 9/10/2018

811618.00



Data @ **460 V**

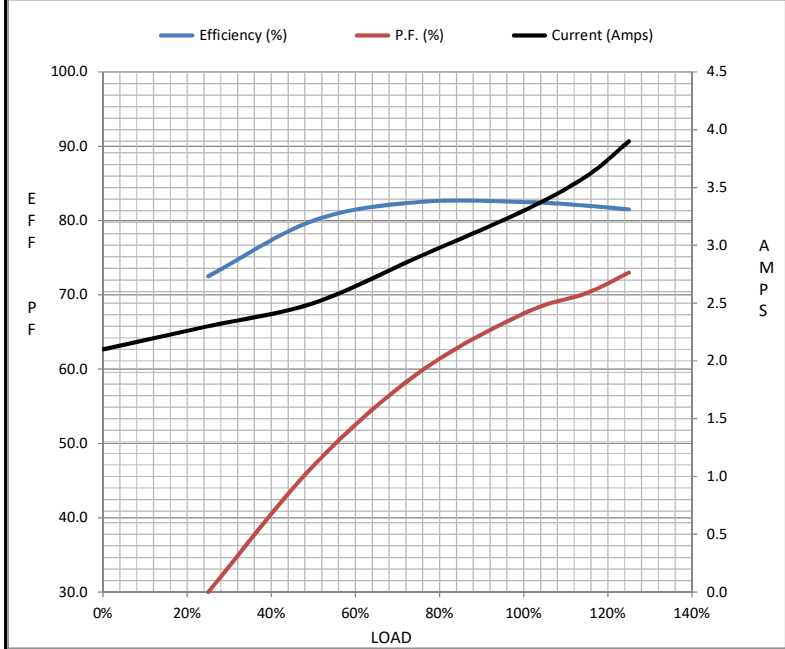
Motor Load Data

Load	0%	25%	50%	75%	100%	115%	125%	LR
Current (Amps)	2.10	2.30	2.50	2.90	3.3	3.6	3.9	23.5
Torque (ft-lb)	0.00	2.20	4.5	6.7	9.1	10.3	11.5	21.0
RPM	1200	1190	1180	1170	1160	1,154	1145	0
Efficiency (%)		72.5	80.0	82.5	82.5	82.0	81.5	
P.F. (%)	8.0	30.0	47.0	59.5	67.5	70.3	73.0	55.0

Motor Speed Data

	LR	Pull-Up	BD	Rated	Idle
Speed (RPM)	0	500	925	1160	1200
Current (Amps)	23.5	21.0	14.5	3.3	2.10
Torque (ft-lb)	21.0	20.0	34.0	9.1	0.00

Information Block				
HP	2.0			
Sync. RPM	1200			
Frame	184			
Enclosure	TENV			
Construction	TTL			
Voltage	230/460 V			
Frequency	60 Hz			
Design	B			
LR Code letter	L			
Service Factor	1.15			
Temp Rise @ FL	70 ° C			
Duty	CONT			
Ambient	40 ° C			
Elevation	1,000 feet			
Rotor/Shaft wk ²	0.38 Lb-Ft ²			
Ref Wdg	K184656 NONE			
Sound Pressure @ 1M	60 dBA			
VFD Rating	CONSTANT 1000:1			
Outline Dwg	B-SS68967-675A			
Conn. Diag	EE7308T			
Additional Specifications:				
0				
0				
EQUIV CKT (OHMS / PHASE)				
R1	R2	X1	X2	Xm
3.9480	3.4360	7.7250	12.1130	116.8660



Speed - Torque Curve

