

PRODUCT INFORMATION PACKET



Model No: 811595.00
Catalog No: 811595.00
350 HP, Severe Duty Motor, 3 phase, 3600 RPM, 460 V, 447/449TS Frame, TEFC
Severe Duty Motors

Regal and Leeson are trademarks of Regal Rexnord Corporation or one of its affiliated companies.
©2021 Regal Rexnord Corporation, All Rights Reserved. MC017097E



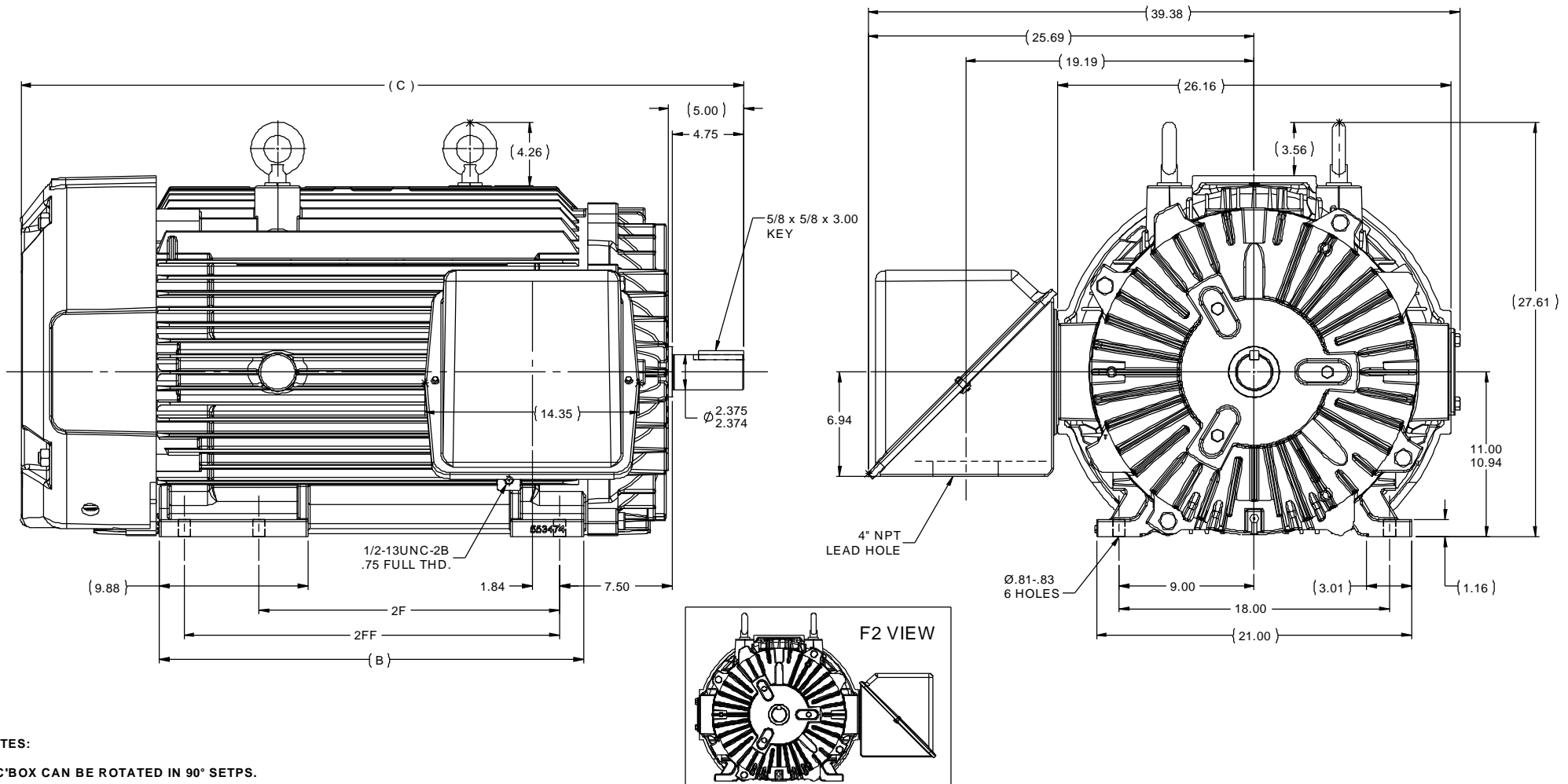


Nameplate Specifications

Output HP	350 Hp	Output KW	260.0 kW
Frequency	60 Hz	Voltage	460 V
Current	380.0 A	Speed	3572 rpm
Service Factor	1.15	Phase	3
Efficiency	95.8 %	Power Factor	89
Duty	Continuous	Insulation Class	H
Design Code	B	KVA Code	G
Frame	447/449TS	Enclosure	Totally Enclosed Fan Cooled
Thermal Protection	No	Ambient Temperature	40 °C
Drive End Bearing Size	6313	Opp Drive End Bearing Size	6313
UL	Recognized	CSA	Y
CE	Y	IP Code	56
Number of Speeds	1		

Technical Specifications

Electrical Type	Squirrel Cage Inverter Rated	Starting Method	Line Or Inverter
Poles	2	Rotation	Reversible
Resistance Main	.0072 Ohms	Mounting	Rigid Base
Motor Orientation	Horizontal	Drive End Bearing	Ball
Opp Drive End Bearing	Ball	Frame Material	Cast Iron
Shaft Type	TS	Overall Length	48.09 in
Frame Length	28.75 in	Shaft Diameter	2.375 in
Shaft Extension	4.75 in	Assembly/Box Mounting	F1/F2 CAPABLE
Connection Drawing	A-EE7300-LE	Outline Drawing	B-SS515689LE-2875

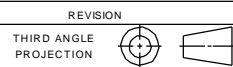


NOTES:

- C'BOX CAN BE ROTATED IN 90° SETPS.
- NAMEPLATES TO BE READ FROM C'BOX SIDE OF MOTOR.

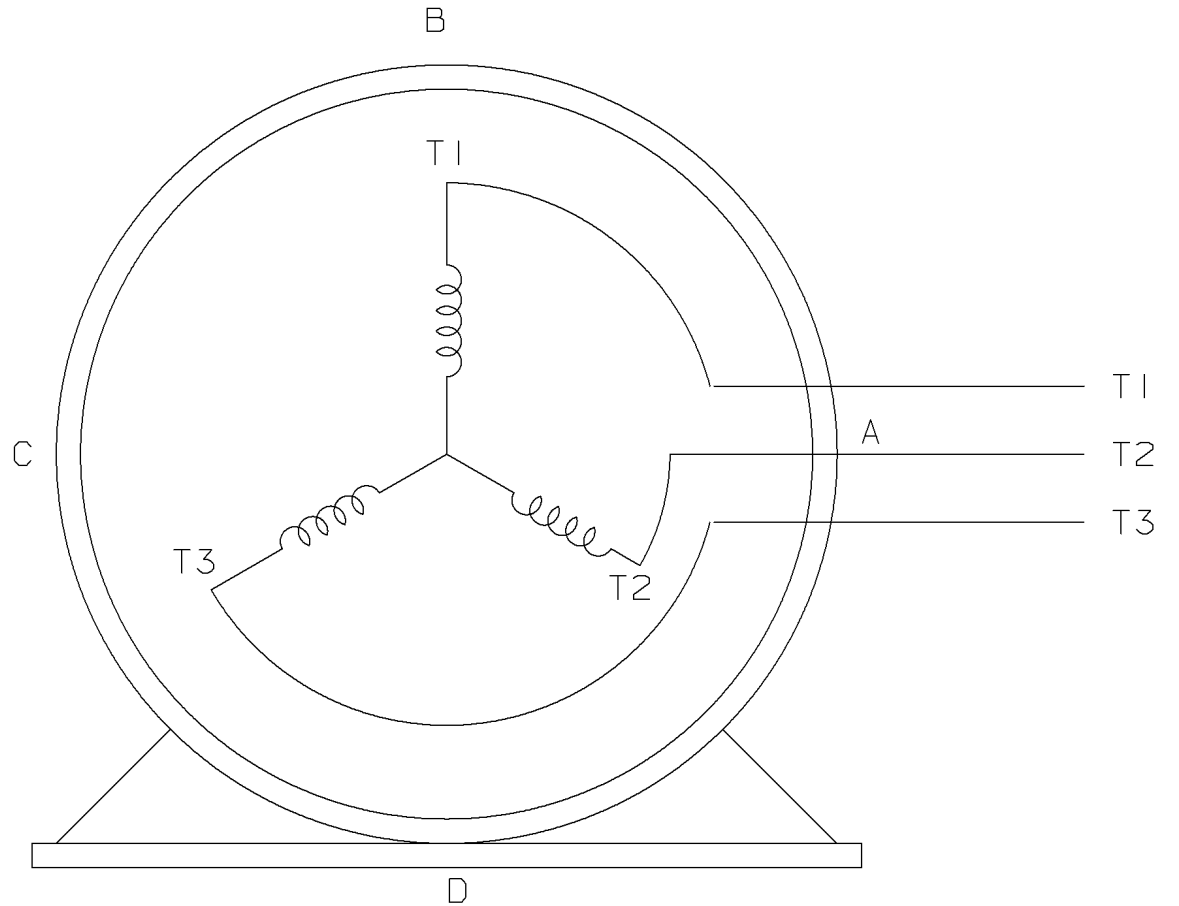
DASH	FRAME	C	B	2F	2FF
2875	447TS	48.09	28.25	20.00	- - -
2875	449TS	48.09	28.25	- - -	25.00

TOLERANCES UNLESS SPECIFIED		LEESON		ELECTRIC MOTORS GEARMOTORS AND DRIVES		DRAWN JJB 05-07-2013	
DEC	INCHES					CHK MH 05-07-2013	
X	±.1					APPR DJK 05-07-2013	
XX	±.03	TITLE OUTLINE - TEFC				SCALE 1:6.5	
XXX	±.005	447/449TS FR. - STD. - TAPPED LEAD HOLE				REF	
XXXX	±.0005	MATL				FMF MU112485	
CHK	ANG ±1/2°	FINISH				PAGE OF	
RFP	05-07-2013	PREV				DRAWING NO	
NETWORK FILE NAME SS515689LE		SIZE		DRAWING NO		REV	
		B		SS515689LE			



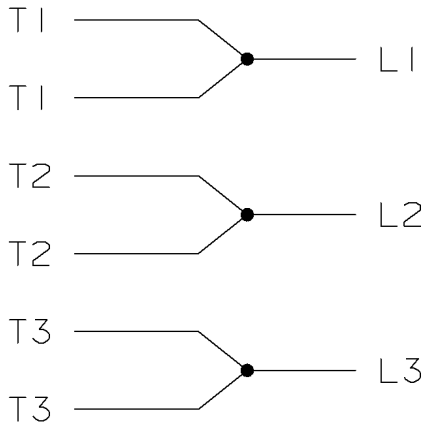
THREE PHASE - SINGLE VOLTAGE
MOTOR - CONDUIT BOX @ 'A'

TO REVERSE ROTATION:
INTERCHANGE ANY TWO LINE
LEAD CONNECTIONS




VIEW OF TERMINAL END

IF MOTOR HAS
6 LEADS



A-9806 DECAL

						TOLERANCES UNLESS SPECIFIED		 ELECTRIC MOTORS GEARMOTORS AND DRIVES		DRAWN MSG 05-22-2002			
						DEC.	TOLERANCE			CHK	ML	05-22-2002	
						.X	± .1	TITLE CONNECTION DIAGRAM SINGLE VOLT - 3Ø MOTOR		SCALE			
						.XX	± .02			REF		APPD GK 05-22-2002	
						.XXX	± .005			FMF			
1	NEW DRAWING	MSG	05-22-2002	ML	.XXXX	± .0005	<input checked="" type="checkbox"/> SURFACE ROUGHNESS UNLESS SPECIFIED		MAT'L.		PREV		
NO.	REVISION	BY	DATE	CHK	ANG	± 7'30'	<input type="checkbox"/> FINISH						
THIS DRAWING IN DESIGN AND DETAIL IS OUR PROPERTY AND MUST NOT BE USED EXCEPT IN CONNECTION WITH OUR WORK. ALL RIGHTS OF DESIGN AND INVENTION ARE RESERVED. THIS IS AN ELECTRONICALLY GENERATED DOCUMENT - DO NOT SCALE THIS PRINT				PURCHASED		CAD FILE EE7300-LE		SHOP BOOK		SIZE	DRAWING NO.	REV.	
				DIST		WA - LB - WP - LM - BR - BY		A		EE7300-LE		I	