

PRODUCT INFORMATION PACKET



Model No: 811592.00
Catalog No: 811592.00
OBSOLETE REPLACED BY 449TSHFS9003
Severe Duty Motors

Regal and Leeson are trademarks of Regal Rexnord Corporation or one of its affiliated companies.
©2021 Regal Rexnord Corporation, All Rights Reserved. MC017097E





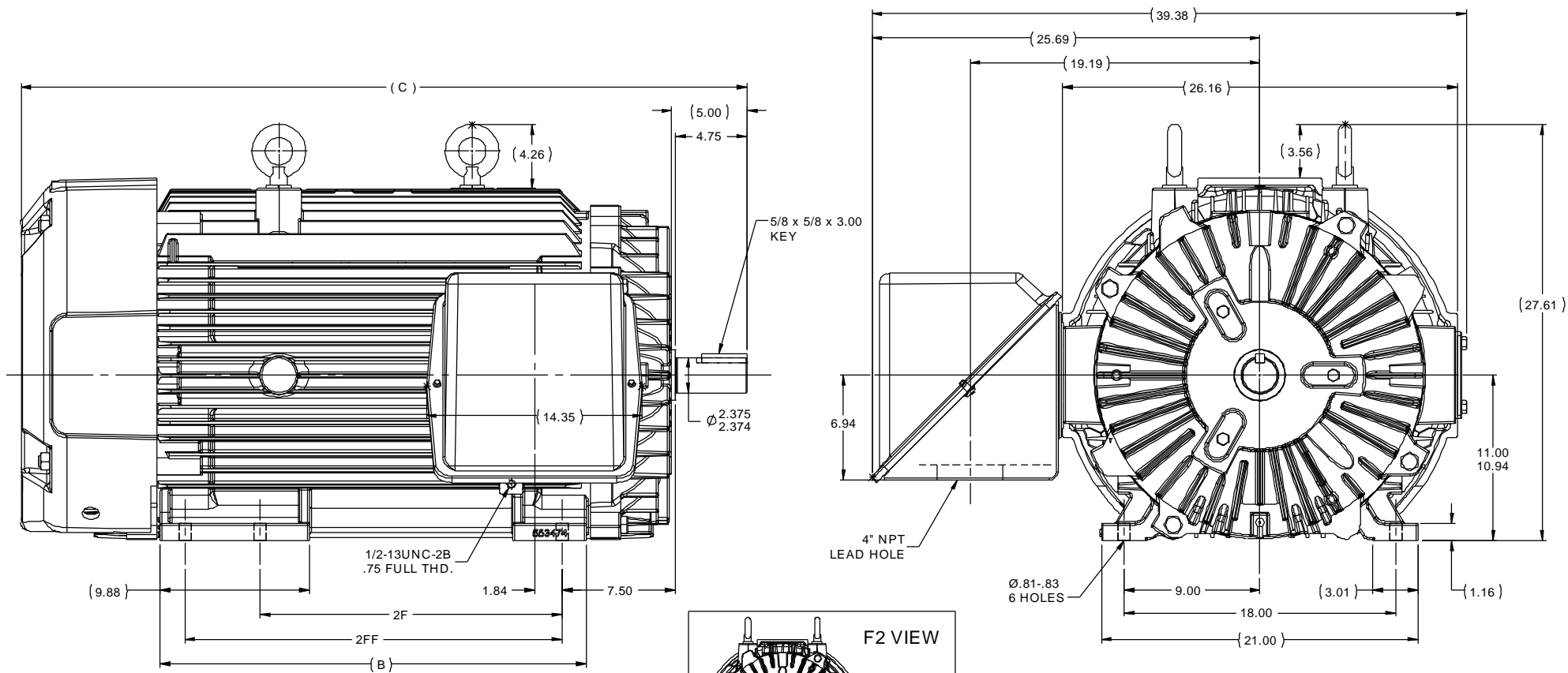
Nameplate Specifications

Output HP	250 Hp	Output KW	187.0 kW
Frequency	60 Hz	Voltage	460 V
Current	270.0 A	Speed	3575 rpm
Service Factor	1.15	Phase	3
Efficiency	96.2 %	Power Factor	90
Duty	Continuous	Insulation Class	F
Design Code	B	KVA Code	G
Frame	447/449TS	Enclosure	Totally Enclosed Fan Cooled
Thermal Protection	No	Ambient Temperature	40 °C
Drive End Bearing Size	6313	Opp Drive End Bearing Size	6313
UL	Recognized	CSA	Y
CE	Y	IP Code	56
Number of Speeds	1		

Technical Specifications

Electrical Type	Squirrel Cage Inverter Rated	Starting Method	Line Or Inverter
Poles	2	Rotation	Reversible
Resistance Main	.01 Ohms	Mounting	Rigid Base
Motor Orientation	Horizontal	Drive End Bearing	Ball
Opp Drive End Bearing	Ball	Frame Material	Cast Iron
Shaft Type	TS	Overall Length	48.09 in
Frame Length	28.75 in	Shaft Diameter	2.375 in
Shaft Extension	4.75 in	Assembly/Box Mounting	F1/F2 CAPABLE
Outline Drawing	B-SS515689LE-2875	Connection Drawing	A-EE7300U-LE

This is an uncontrolled document once printed or downloaded and is subject to change without notice. Date Created:10/11/2021



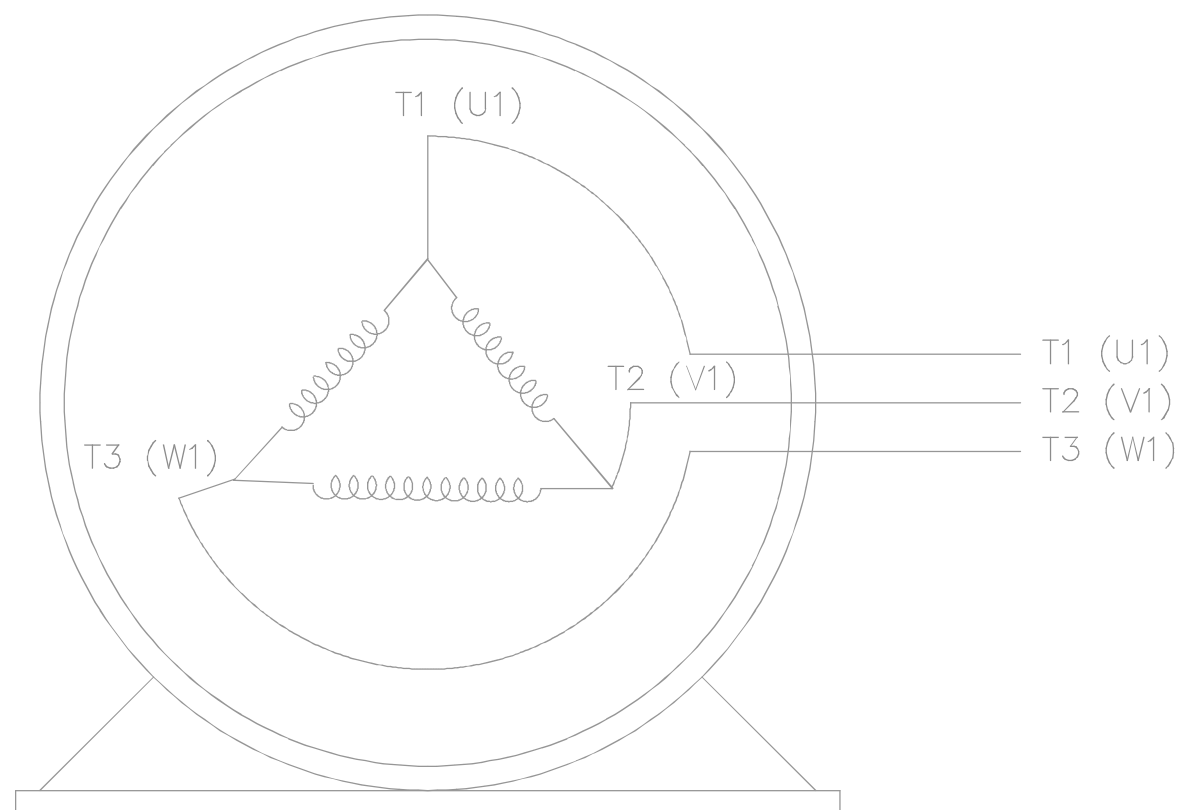
NOTES:

1. C'BOX CAN BE ROTATED IN 90° SETPS.

2. NAMEPLATES TO BE READ FROM C'BOX SIDE OF MOTOR.

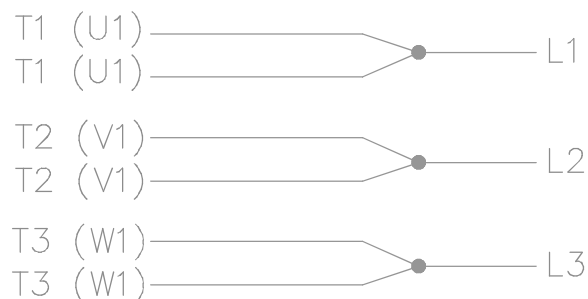
DASH	FRAME	C	B	2F	2FF
2875	447TS	48.09	28.25	20.00	---
2875	449TS	48.09	28.25	---	25.00


TOLERANCES UNLESS SPECIFIED		DEC INCHES		TITLE		DRAWN	
XX	±.03	DEC	INCHES	OUTLINE - TEFC		CHK	JJB 05-07-2013
XXX	±.005			447/449TS FR. - STD. - TAPPED LEAD HOLE		APP	MH 05-07-2013
XXXX	±.0005					REF	DJK 05-07-2013
NO	REVISION	BY & DATE	CHK	ANG	FINISH	SCALE	1:6.5
			RFP	05-07-2013	PREV	REF	
			NETWORK FILE NAME	SS515689LE		FMF	MU112485
						PAGE	OF
						SIZE	B
						DRAWING NO	SS515689LE
						REV	



VIEW OF TERMINAL END

IF MOTOR HAS MULTIPLE
T'S PER LEAD CONNECT
TOGETHER LIKE T'S



				TOLERANCES UNLESS SPECIFIED			ELECTRIC MOTORS GEARMOTORS AND DRIVES			DRAWN KL 03-24-2003			
				DEC.	INCHES					CHK GFH 03-24-2003			
				.X	± -					APPD JES 03-24-2003			
				.XX	± -					SCALE 1=1			
				.XXX	± -					REF			
1	NEW DRAWING	MU45909	KL 03-24-2003		.XXXX	± -	TITLE CONNECTION DIAGRAM 3ø SINGLE VOLTAGE			FMF			
NO.	REVISION		BY & DATE	CHK	ANG	± -	FINISH			PREV			
THIS DRAWING IN DESIGN AND DETAIL IS OUR PROPERTY AND MUST NOT BE USED EXCEPT IN CONNECTION WITH OUR WORK ALL RIGHTS OF DESIGN AND INVENTION ARE RESERVED THIS IS AN ELECTRONICALLY GENERATED DOCUMENT - DO NOT SCALE THIS PRINT				RFP		CAD FILE EE7300U-LE			SIZE	DRAWING NO.	PAGE	OF	REV.
				DIST WA					A	EE7300U-LE			1